

# Anti-GRK2 Recombinant Rabbit Monoclonal Antibody



**Catalog #: 4165**

## Aliases

GRK2; G Protein-Coupled Receptor Kinase 2; BARK1; ADRBK1; Beta-Adrenergic Receptor Kinase 1; EC 2.7.11.15; Beta-ARK-1; Adrenergic, Beta, Receptor Kinase 1; G-Protein Coupled Receptor Kinase; Adrenergic Beta Receptor Kinase 1; BETA-ARK1; EC 2.7.11; BARK

## Background

Gene Name: GRK2

NCBI Gene Entry: [156](#)

UniProt Entry: [P25098](#)

## Application Information

Molecular Weight: Predicted, 80 kDa; observed, 80 kDa

Clonality: Rabbit monoclonal antibody

Clone ID: 24GB9875

Species Reactivity: Human, mouse, rat

Applications Tested: Western blotting (WB), flow cytometry (FCM), immunocytochemistry (IC)

## Immunogen

A synthesized peptide derived from human GRK2

## Isotype

Rabbit IgG

## Storage Buffer

Supplied in PBS (pH 7.4) containing 50% glycerol, and 0.02% sodium azide.

## Storage

Store at -20 °C for one year.

## Recommended Dilutions

Western Blotting (WB): 1:1,000-1:5,000

Flow Cytometry (FCM): 1:2,000

Immunocytochemistry (IC): 1:100-1:1,000

**Note:** This product is for research use only.

---

### SUPPORT

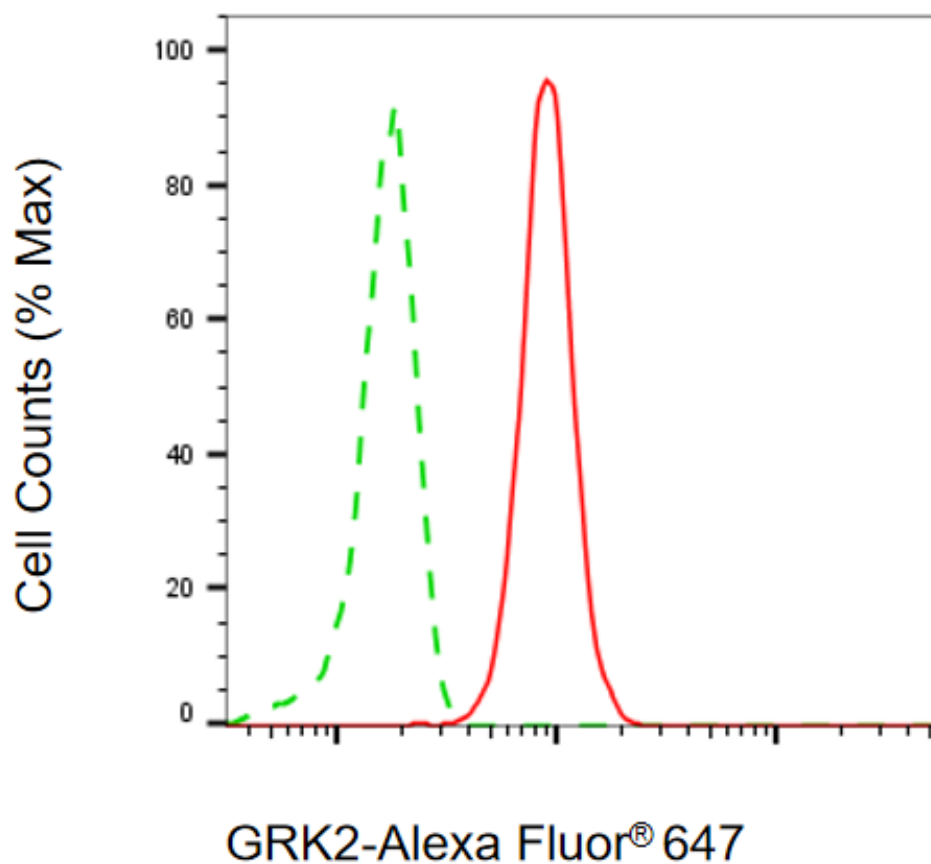
SUPPORT@GENUINBIOTECH.COM  
TEL: +1-540-855-7041

### ORDERS

SALES@GENUINBIOTECH.COM  
FAX: +1-540-855-7041

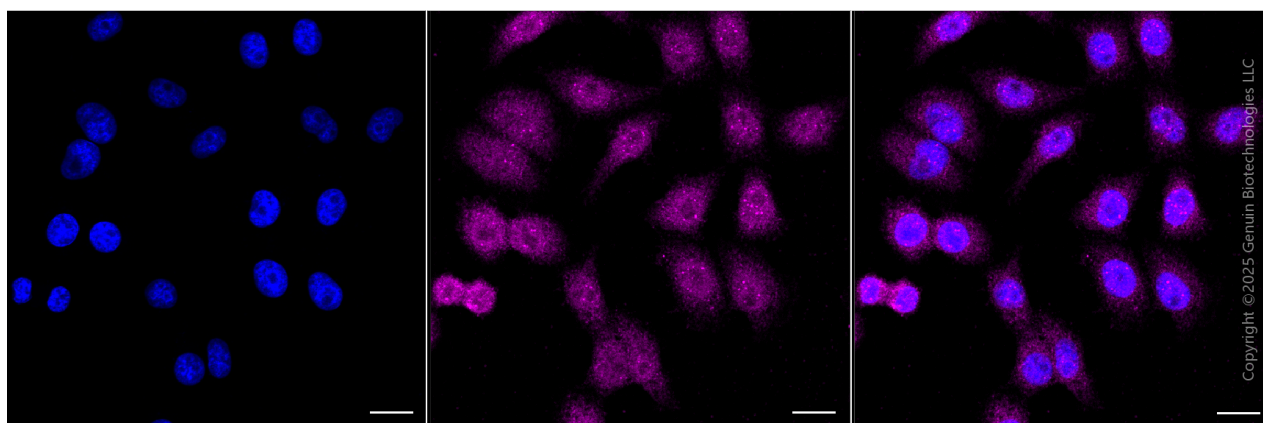
[WWW.GENUINBIOTECH.COM](http://WWW.GENUINBIOTECH.COM)

## Validation Data



Copyright ©2025 Genuin Biotechnologies LLC

Flow cytometric analysis of GRK2 expression in HepG2 cells using anti-GRK2 antibody (Cat#4165, 1:2,000). Green, isotype control; red, GRK2.



Immunocytochemical staining of HepG2 cells with anti-GRK2 antibody (Cat#4165, 1:1,000). Nuclei were stained blue with DAPI; GRK2 was stained magenta with Alexa Fluor® 647. Images were taken using Leica stellaris 5. Protein abundance based on laser Intensity and smart gain: Medium. Scale bar, 20 µm.

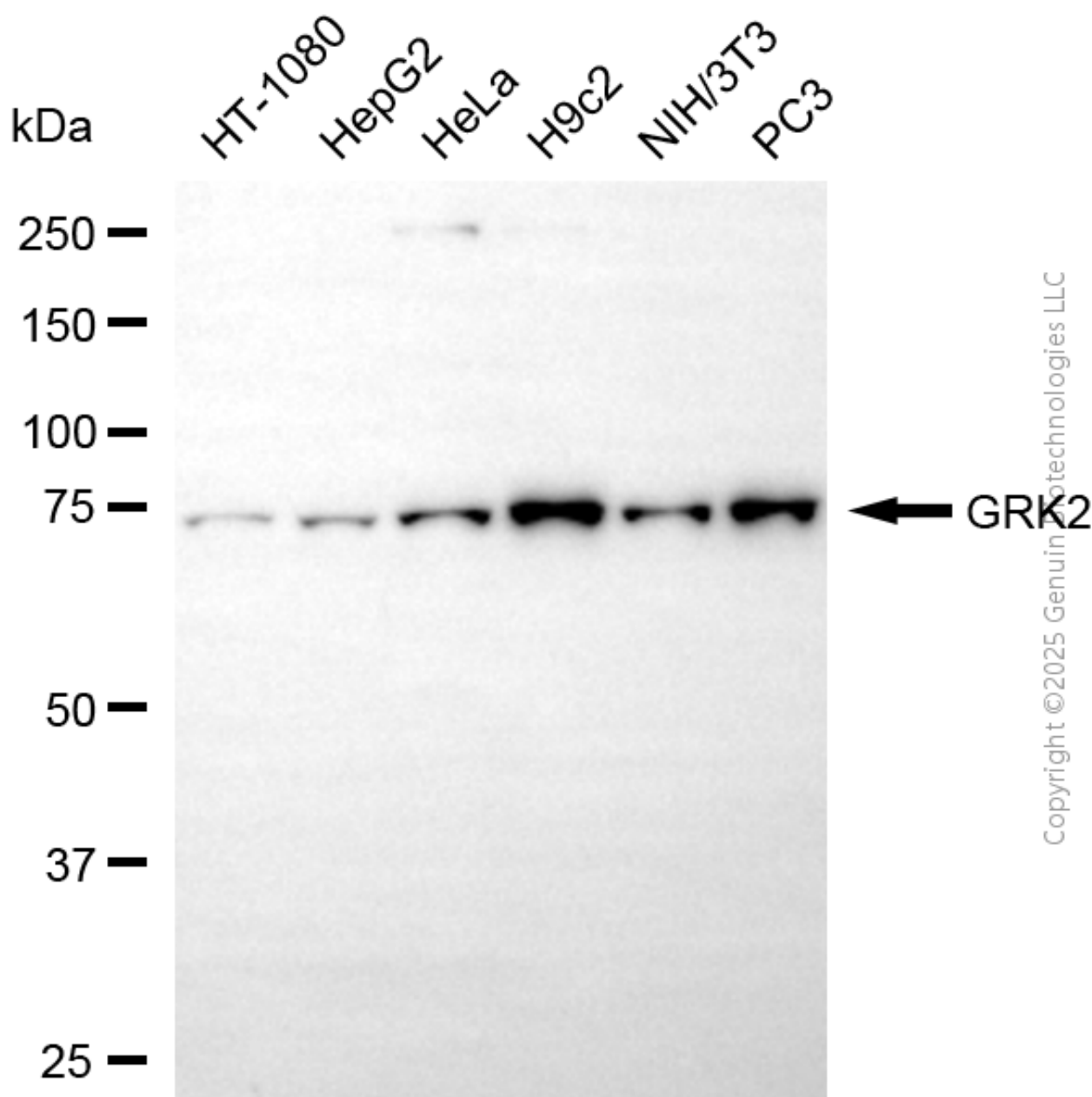
### SUPPORT

SUPPORT@GENUINBIOTECH.COM  
TEL: +1-540-855-7041

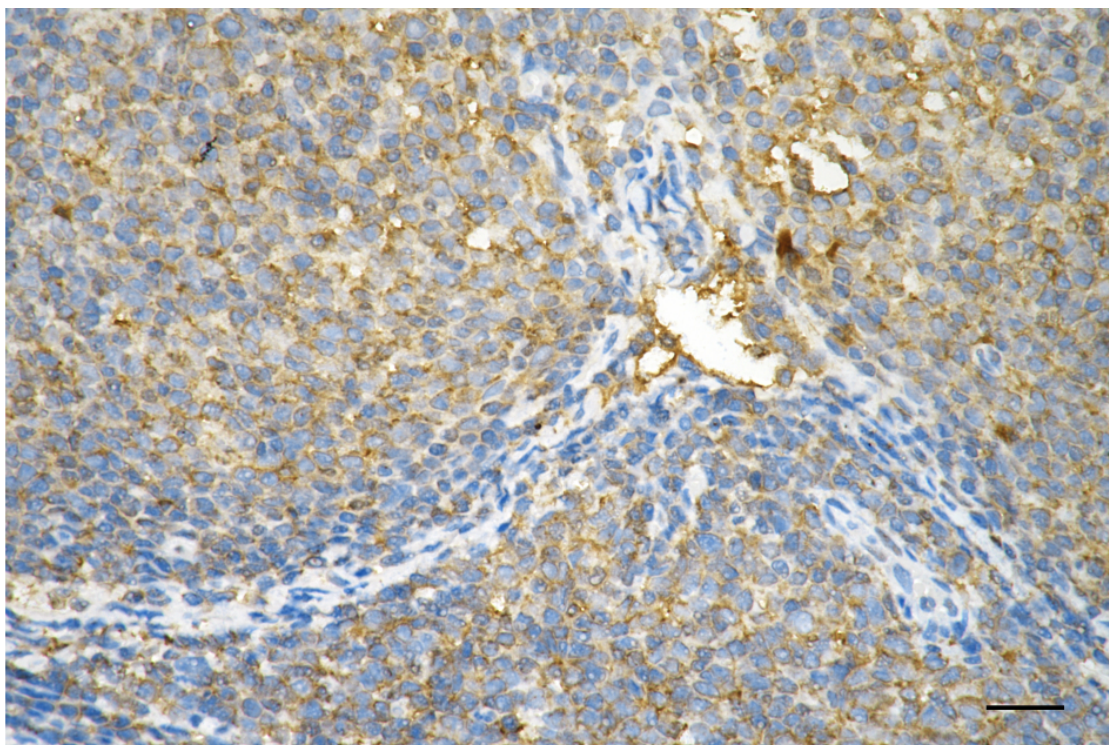
### ORDERS

SALES@GENUINBIOTECH.COM  
FAX: +1-540-855-7041

[WWW.GENUINBIOTECH.COM](http://WWW.GENUINBIOTECH.COM)



Western blotting analysis using anti-GRK2 antibody (Cat#4165). Total cell lysates (30 µg) from various cell lines were loaded and separated by SDS-PAGE. The blot was incubated with anti-GRK2 antibody (Cat#4165, 1:5,000) and HRP-conjugated goat anti-rabbit secondary antibody (Cat#201, 1:20,000) respectively. Image was developed using NaQ™ ECL Substrate Kit (Cat#716).



Copyright ©2025 Genuin Biotechnologies LLC

Immunohistochemistry was performed on paraffin-embedded human lymphoma using anti-GRK2 antibody (Cat#4165, 1:200). Antigen retrieval was done in sodium citrate buffer (pH 6.0). DAB was used for detection, with hematoxylin counterstaining. Images were acquired using a Nikon Ci-L Plus microscope (40× objective). Scale bar: 25 μm.

Immunohistochemistry was performed on paraffin-embedded human lymphoma using anti-GRK2 antibody (Cat#4165, 1:200). Antigen retrieval was done in sodium citrate buffer (pH 6.0). DAB was used for detection, with hematoxylin counterstaining. Images were acquired using a Nikon Ci-L Plus microscope (40× objective). Scale bar: 25 μm.