

# Anti-PBP Recombinant Rabbit Monoclonal Antibody



**Catalog #: 4173**

## Aliases

PEBP1; Phosphatidylethanolamine Binding Protein 1; RKIP; PEBP; HCNP; PBP; Hippocampal Cholinergic Neurostimulating Peptide; Phosphatidylethanolamine-Binding Protein 1; Raf Kinase Inhibitory Protein; Raf Kinase Inhibitor Protein; Prostatic Binding Protein; Neuropolypeptide H3; HCNPpp; PEBP-1; Epididymis Secretory Protein Li 34; Epididymis Secretory Protein Li 96; Epididymis Luminal Protein 210; Prostatic-Binding Protein; HEL-S-34; HEL-S-96; HEL-210

## Background

Gene Name: PEBP1

NCBI Gene Entry: [5037](#)

UniProt Entry: [P30086](#)

## Application Information

Molecular Weight: Predicted, 21 kDa; observed, 21 kDa

Clonality: Rabbit monoclonal antibody

Clone ID: 24GB9905

Species Reactivity: Human, mouse, rat

Applications Tested: Western blotting (WB)

## Immunogen

A synthesized peptide derived from human PEBP1

## Isotype

Rabbit IgG

## Storage Buffer

Supplied in PBS (pH 7.4) containing 50% glycerol, and 0.02% sodium azide.

## Storage

Store at -20 °C for one year.

## Recommended Dilutions

Western Blotting (WB): 1:1,000-1:5,000

**Note:** This product is for research use only.

---

### SUPPORT

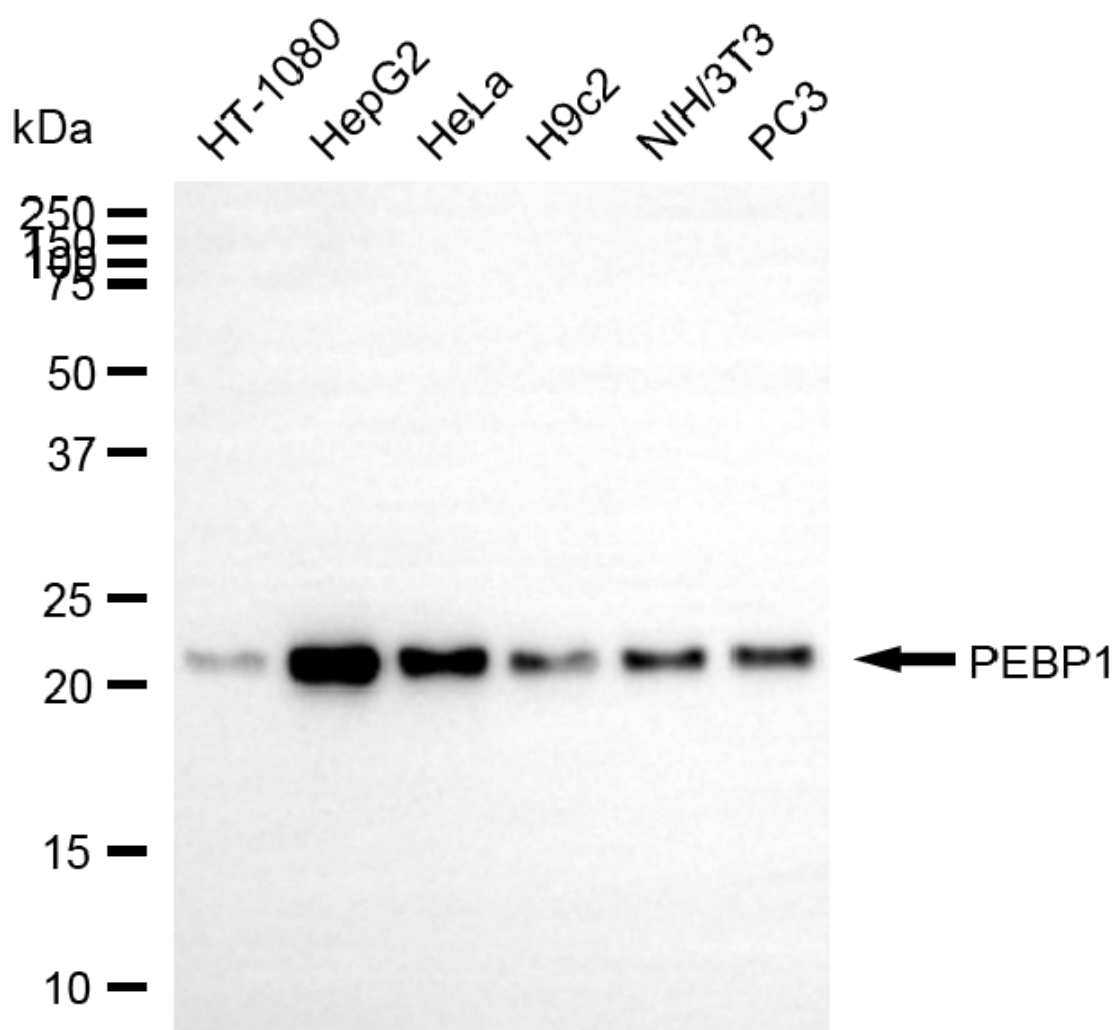
SUPPORT@GENUINBIOTECH.COM  
TEL: +1-540-855-7041

### ORDERS

SALES@GENUINBIOTECH.COM  
FAX: +1-540-855-7041

[WWW.GENUINBIOTECH.COM](http://WWW.GENUINBIOTECH.COM)

## Validation Data



Copyright ©2025 Genuin Biotechnologies LLC

Western blotting analysis using anti-PEBP1 antibody (Cat#4173). Total cell lysates (30  $\mu$ g) from various cell lines were loaded and separated by SDS-PAGE. The blot was incubated with anti-PEBP1 antibody (Cat#4173, 1:5,000) and HRP-conjugated goat anti-rabbit secondary antibody (Cat#201, 1:20,000) respectively. Image was developed using NaQ™ ECL Substrate Kit (Cat#716).

### SUPPORT

SUPPORT@GENUINBIOTECH.COM  
TEL: +1-540-855-7041

### ORDERS

SALES@GENUINBIOTECH.COM  
FAX: +1-540-855-7041

[WWW.GENUINBIOTECH.COM](http://WWW.GENUINBIOTECH.COM)