

Anti-Catenin alpha 1 Recombinant Rabbit Monoclonal Antibody



Catalog #: 4179

Aliases

CTNNA1; Catenin Alpha 1; CAP102; Renal Carcinoma Antigen NY-REN-13; Alpha-E-Catenin; Catenin Alpha-1; Catenin (Cadherin-Associated Protein), Alpha 1 (102kD); Catenin (Cadherin-Associated Protein), Alpha 1, 102kDa; Epididymis Secretory Sperm Binding Protein; Cadherin-Associated Protein; Alpha E-Catenin; MDBS2; MDPT2

Background

Gene Name: CTNNA1

NCBI Gene Entry: [1495](#)

UniProt Entry: [P35221](#)

Application Information

Molecular Weight: Predicted, 100 kDa; observed, 100 kDa

Clonality: Rabbit monoclonal antibody

Clone ID: 24GB9935

Species Reactivity: Human, mouse, rat

Applications Tested: Western blotting (WB), flow cytometry (FCM), immunocytochemistry (IC)

Immunogen

A synthesized peptide derived from human alpha 1

Isotype

Rabbit IgG

Storage Buffer

Supplied in PBS (pH 7.4) containing 50% glycerol, and 0.02% sodium azide.

Storage

Store at -20 °C for one year.

Recommended Dilutions

Western Blotting (WB): 1:4,000-1:20,000

Flow Cytometry (FCM): 1:2,000

Immunocytochemistry (IC): 1:100-1:1,000

SUPPORT

SUPPORT@GENUINBIOTECH.COM
TEL: +1-540-855-7041

ORDERS

SALES@GENUINBIOTECH.COM
FAX: +1-540-855-7041

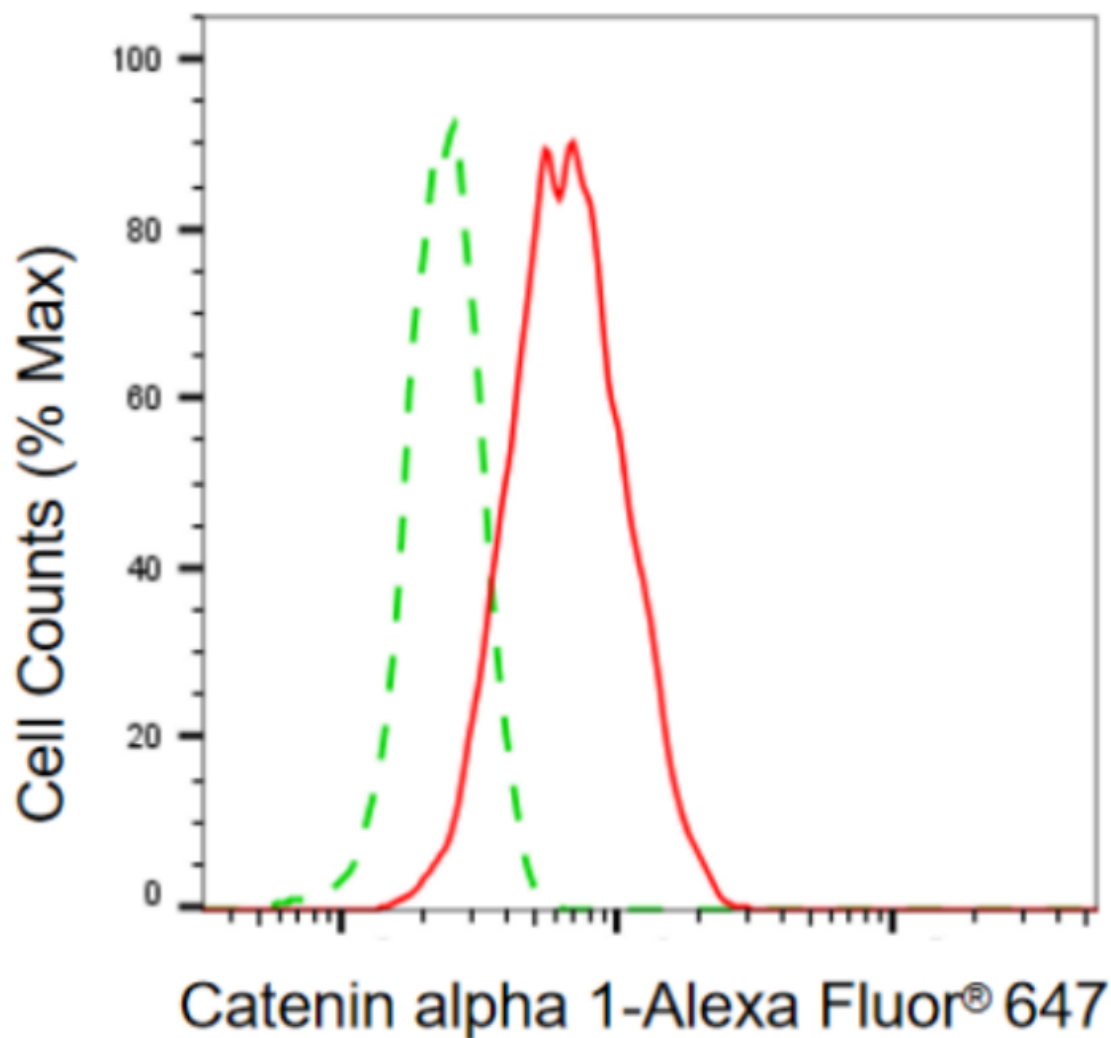
WWW.GENUINBIOTECH.COM

Anti-Catenin alpha 1 Recombinant Rabbit Monoclonal Antibody

PAGE 2

Note: This product is for research use only.

Validation Data



Flow cytometric analysis of catenin alpha 1 expression in C2C12 cells using anti-catenin alpha 1 antibody (Cat#4179, 1:2,000). Green, isotype control; red, catenin alpha 1.

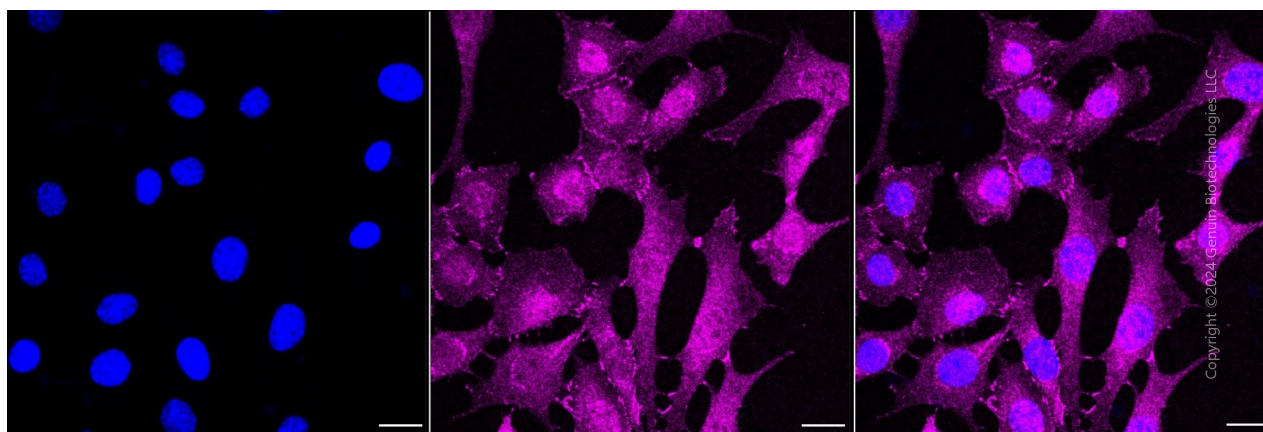
SUPPORT

SUPPORT@GENUINBIOTECH.COM
TEL: +1-540-855-7041

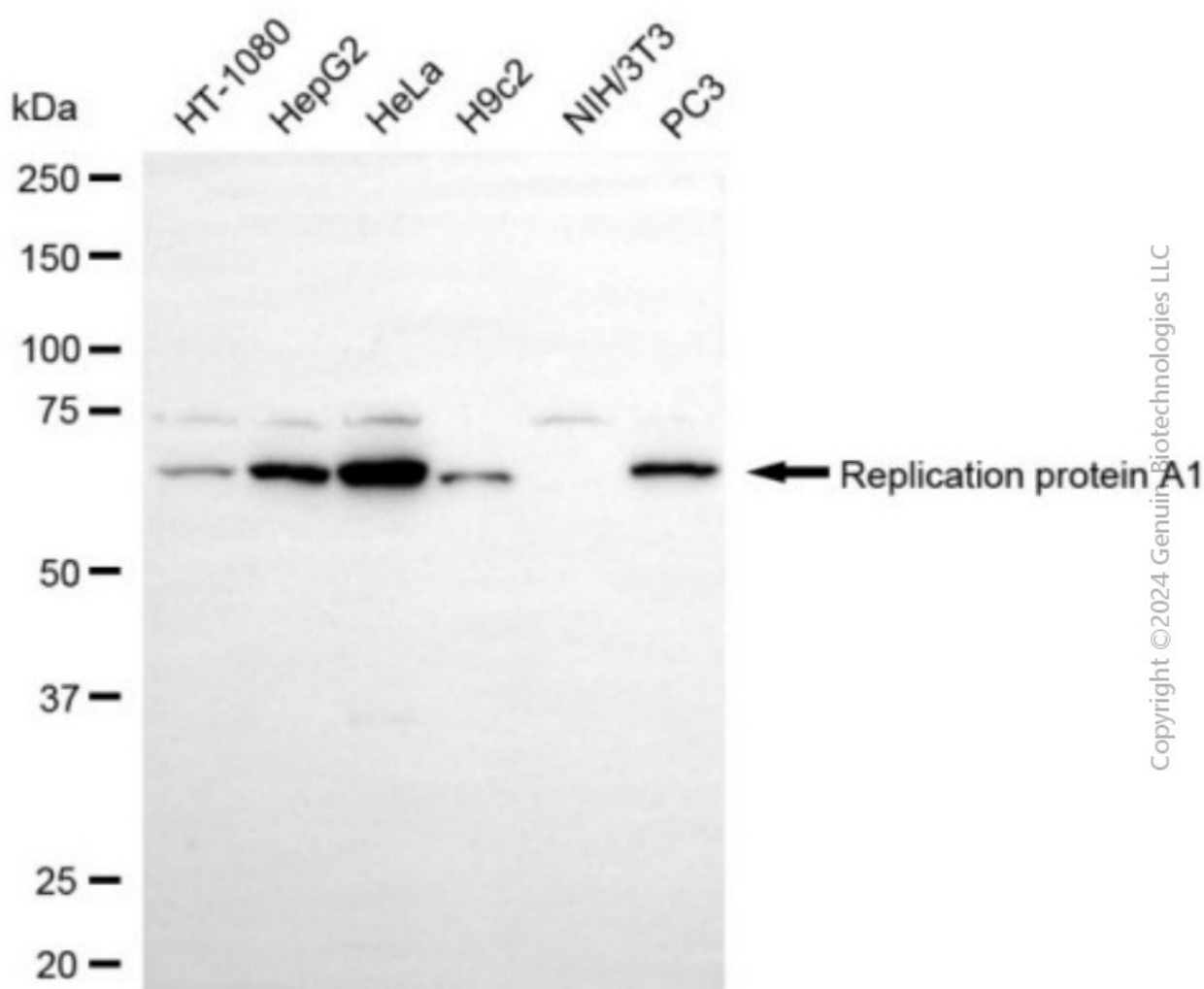
ORDERS

SALES@GENUINBIOTECH.COM
FAX: +1-540-855-7041

WWW.GENUINBIOTECH.COM



Immunocytochemical staining of C2C12 cells with anti-Catenin alpha 1 antibody (Cat#4179, 1:1,000). Nuclei were stained blue with DAPI; Catenin alpha 1 was stained magenta with Alexa Fluor® 647. Images were taken using Leica stellaris 5. Protein abundance based on laser Intensity and smart gain: Medium. Scale bar, 20 µm.



Anti-Catenin alpha 1 Recombinant Rabbit Monoclonal Antibody

PAGE 4

Western blotting analysis using anti-catenin alpha 1 antibody (Cat#4179). Total cell lysates (30 µg) from various cell lines were loaded and separated by SDS-PAGE. The blot was incubated with anti-catenin alpha 1 antibody (Cat#4179, 1:20,000) and HRP-conjugated goat anti-rabbit secondary antibody (Cat#201, 1:20,000) respectively. Image was developed using FeQ™ ECL Substrate Kit (Cat#226).

SUPPORT

SUPPORT@GENUINBIOTECH.COM
TEL: +1-540-855-7041

ORDERS

SALES@GENUINBIOTECH.COM
FAX: +1-540-855-7041

WWW.GENUINBIOTECH.COM