

Anti-Ferritin heavy chain 1 Recombinant Rabbit Monoclonal Antibody



Catalog #: 4180

Aliases

FTH1; Ferritin Heavy Chain 1; FTH; PIG15; FTHL6; PLIF; FHC; Cell Proliferation-Inducing Gene 15 Protein; Proliferation-Inducing Protein 15; Placenta Immunoregulatory Factor; Ferritin, Heavy; Polypeptide 1; Ferritin Heavy Chain; Ferritin H Subunit; Apoferritin; EC 1.16.3.1; H-Ferritin; HFE5

Background

Gene Name: FTH1

NCBI Gene Entry: [2495](#)

UniProt Entry: [P02794](#)

Application Information

Molecular Weight: Predicted, 21 kDa; observed, 21 kDa

Clonality: Rabbit monoclonal antibody

Clone ID: 24GB9940

Species Reactivity: Human, mouse, rat

Applications Tested: Western blotting (WB), flow cytometry (FCM), immunocytochemistry (IC)

Immunogen

A synthesized peptide derived from human Ferritin

Isotype

Rabbit IgG

Storage Buffer

Supplied in PBS (pH 7.4) containing 50% glycerol, and 0.02% sodium azide.

Storage

Store at -20 °C for one year.

Recommended Dilutions

Western Blotting (WB): 1:1,000-1:5,000

Flow Cytometry (FCM): 1:2,000

Immunocytochemistry (IC): 1:100-1:1,000

SUPPORT

SUPPORT@GENUINBIOTECH.COM
TEL: +1-540-855-7041

ORDERS

SALES@GENUINBIOTECH.COM
FAX: +1-540-855-7041

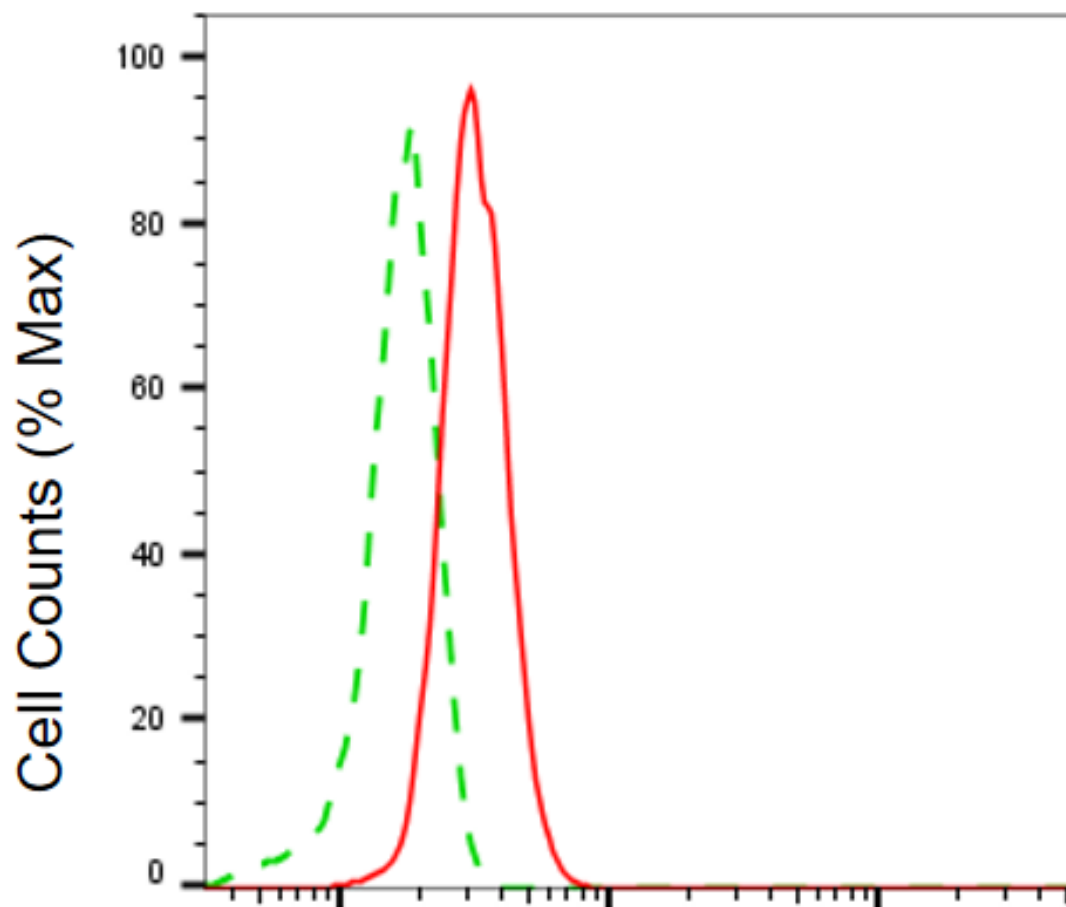
WWW.GENUINBIOTECH.COM

Anti-Ferritin heavy chain 1 Recombinant Rabbit Monoclonal Antibody

PAGE 2

Note: This product is for research use only.

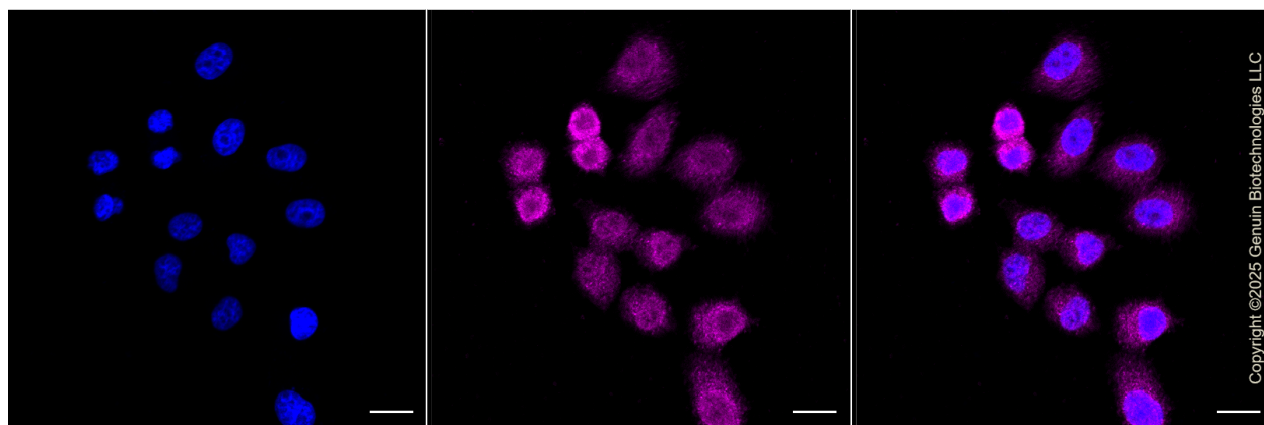
Validation Data



Copyright ©2025 Genuin Biotechnologies LLC

Ferritin heavy chain 1-Alexa Fluor® 647

Flow cytometric analysis of Ferritin heavy chain 1 expression in HepG2 cells using anti-Ferritin heavy chain 1 antibody (Cat#4180, 1:2,000). Green, isotype control; red, Ferritin heavy chain 1.



Copyright ©2025 Genuin Biotechnologies LLC

SUPPORT

SUPPORT@GENUINBIOTECH.COM
TEL: +1-540-855-7041

ORDERS

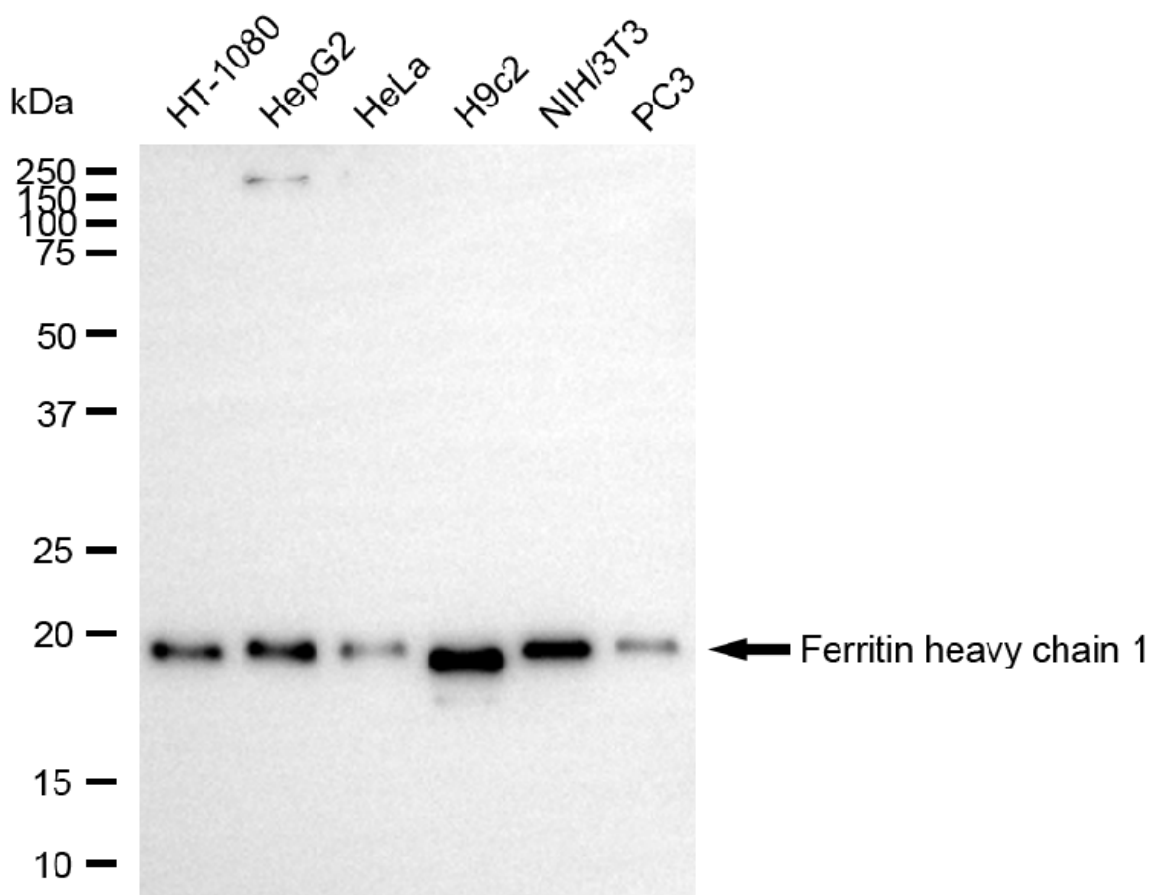
SALES@GENUINBIOTECH.COM
FAX: +1-540-855-7041

WWW.GENUINBIOTECH.COM

Anti-Ferritin heavy chain 1 Recombinant Rabbit Monoclonal Antibody

PAGE 3

Immunocytochemical staining of HepG2 cells with anti-Ferritin heavy chain 1 antibody (Cat#4180, 1:1,000). Nuclei were stained blue with DAPI; Ferritin heavy chain 1 was stained magenta with Alexa Fluor® 647. Images were taken using Leica stellaris 5. Protein abundance based on laser Intensity and smart gain: Medium. Scale bar, 20 μ m.



Copyright ©2025 Genuin Biotechnologies LLC

Western blotting analysis using anti-ferritin heavy chain 1 antibody (Cat#4180). Total cell lysates (30 μ g) from various cell lines were loaded and separated by SDS-PAGE. The blot was incubated with anti-ferritin heavy chain 1 antibody (Cat#4180, 1:5,000) and HRP-conjugated goat anti-rabbit secondary antibody (Cat#201, 1:20,000) respectively. Image was developed using NaQ™ ECL Substrate Kit (Cat#716).

SUPPORT

SUPPORT@GENUINBIOTECH.COM
TEL: +1-540-855-7041

ORDERS

SALES@GENUINBIOTECH.COM
FAX: +1-540-855-7041

WWW.GENUINBIOTECH.COM