

# Anti-GARS Recombinant Rabbit Monoclonal Antibody



**Catalog #: 4186**

## Aliases

GARS1; Glycyl-TRNA Synthetase 1; GlyRS; DSMAV; SMAD1; GARS; Diadenosine Tetraphosphate Synthetase; Charcot-Marie-Tooth Neuropathy 2D; Glycyl-TRNA Synthetase; Glycine--TRNA Ligase; Ap4A Synthetase; EC 6.1.1.14; CMT2D; Charcot-Marie-Tooth Neuropathy, Neuronal Type, D; Glycine TRNA Ligase; AP-4-A Synthetase; EC 2.7.7.-; HMN5A; SMAJI; GLYRS; HMN5

## Background

Gene Name: GARS1

NCBI Gene Entry: [2617](#)

UniProt Entry: [P41250](#)

## Application Information

Molecular Weight: Predicted, 83 kDa; observed, 75 kDa

Clonality: Rabbit monoclonal antibody

Clone ID: 24GB9965

Species Reactivity: Human, mouse, rat

Applications Tested: Western blotting (WB), immunocytochemistry (IC)

## Immunogen

A synthesized peptide derived from human GARS

## Isotype

Rabbit IgG

## Storage Buffer

Supplied in PBS (pH 7.4) containing 50% glycerol, and 0.02% sodium azide.

## Storage

Store at -20 °C for one year.

## Recommended Dilutions

Western Blotting (WB): 1:1,000-1:5,000

Immunocytochemistry (IC): 1:100-1:1,000

---

### SUPPORT

SUPPORT@GENUINBIOTECH.COM  
TEL: +1-540-855-7041

### ORDERS

SALES@GENUINBIOTECH.COM  
FAX: +1-540-855-7041

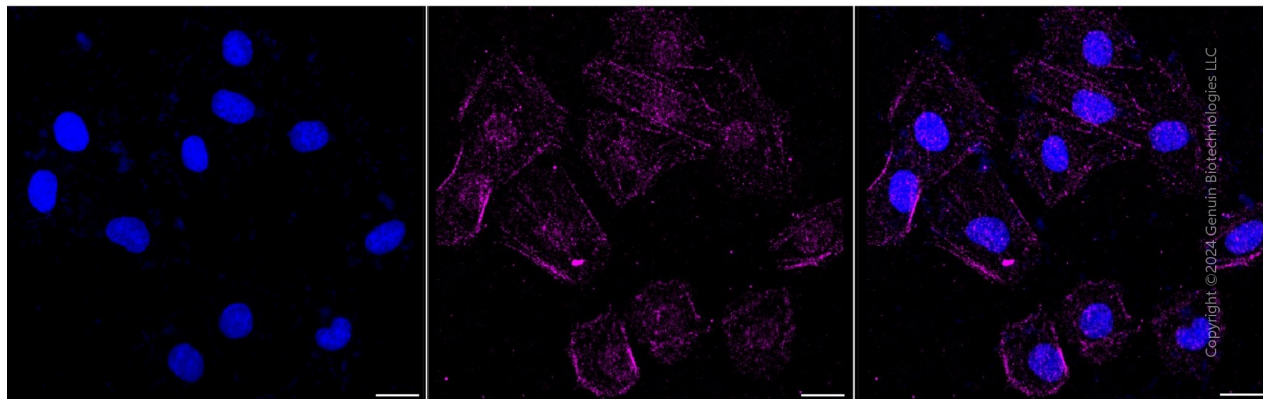
[WWW.GENUINBIOTECH.COM](http://WWW.GENUINBIOTECH.COM)

# Anti-GARS Recombinant Rabbit Monoclonal Antibody

PAGE 2

**Note:** This product is for research use only.

## Validation Data



Immunocytochemical staining of H9c2 cells with anti-GARS antibody (Cat#4186, 1:1,000). Nuclei were stained blue with DAPI; GARS was stained magenta with Alexa Fluor® 647. Images were taken using Leica stellaris 5. Protein abundance based on laser Intensity and smart gain: Low. Scale bar, 20  $\mu$ m.

---

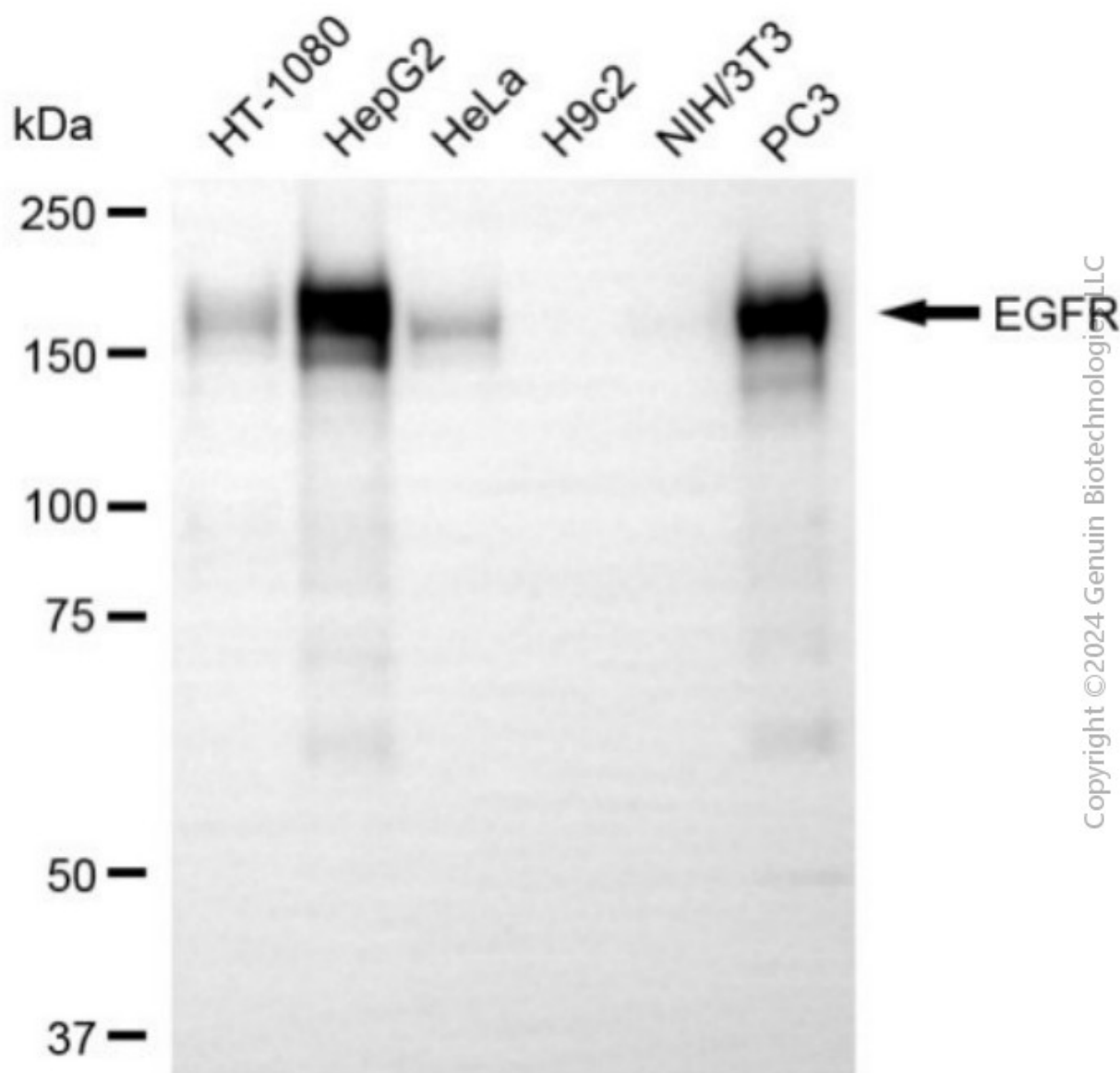
### SUPPORT

SUPPORT@GENUINBIOTECH.COM  
TEL: +1-540-855-7041

### ORDERS

SALES@GENUINBIOTECH.COM  
FAX: +1-540-855-7041

[WWW.GENUINBIOTECH.COM](http://WWW.GENUINBIOTECH.COM)



Western blotting analysis using anti-GARS antibody (Cat#4186). Total cell lysates (30 µg) from various cell lines were loaded and separated by SDS-PAGE. The blot was incubated with anti-GARS antibody (Cat#4186, 1:5,000) and HRP-conjugated goat anti-rabbit secondary antibody (Cat#201, 1:20,000) respectively. Image was developed using NaQ™ ECL Substrate Kit (Cat#716).