

Anti-cleaved Caspase-9 Recombinant Rabbit Monoclonal Antibody



Catalog #: 4188

Aliases

CASP9; Caspase 9; ICE-LAP6; APAF-3; MCH6; PPP1R56; Caspase 9, Apoptosis-Related Cysteine Peptidase; Protein Phosphatase 1, Regulatory Subunit 56; ICE-Like Apoptotic Protease 6; Caspase-9; Caspase 9, Apoptosis-Related Cysteine Protease; Apoptotic Protease Activating Factor 3; Apoptotic Protease-Activating Factor 3; Apoptotic Protease MCH-6; Apoptotic Protease Mch-6; EC 3.4.22.62; CASP-9; APAF3

Background

Gene Name: CASP9

NCBI Gene Entry: [842](#)

UniProt Entry: [P55211](#)

Application Information

Molecular Weight: Predicted, 35,46 kDa; observed, 35,37,46 kDa

Clonality: Rabbit monoclonal antibody

Clone ID: 24GB9975

Species Reactivity: Human, mouse

Applications Tested: Western blotting (WB), flow cytometry (FCM), immunocytochemistry (IC)

Immunogen

A synthesized peptide derived from human CASP9

Isotype

Rabbit IgG

Storage Buffer

Supplied in PBS (pH 7.4) containing 50% glycerol, and 0.02% sodium azide.

Storage

Store at -20 °C for one year.

Recommended Dilutions

Western blotting (WB): 1:1,000-1:5,000

Flow Cytometry (FCM): 1:2,000

Immunocytochemistry (IC): 1:100-1:1,000

SUPPORT

SUPPORT@GENUINBIOTECH.COM
TEL: +1-540-855-7041

ORDERS

SALES@GENUINBIOTECH.COM
FAX: +1-540-855-7041

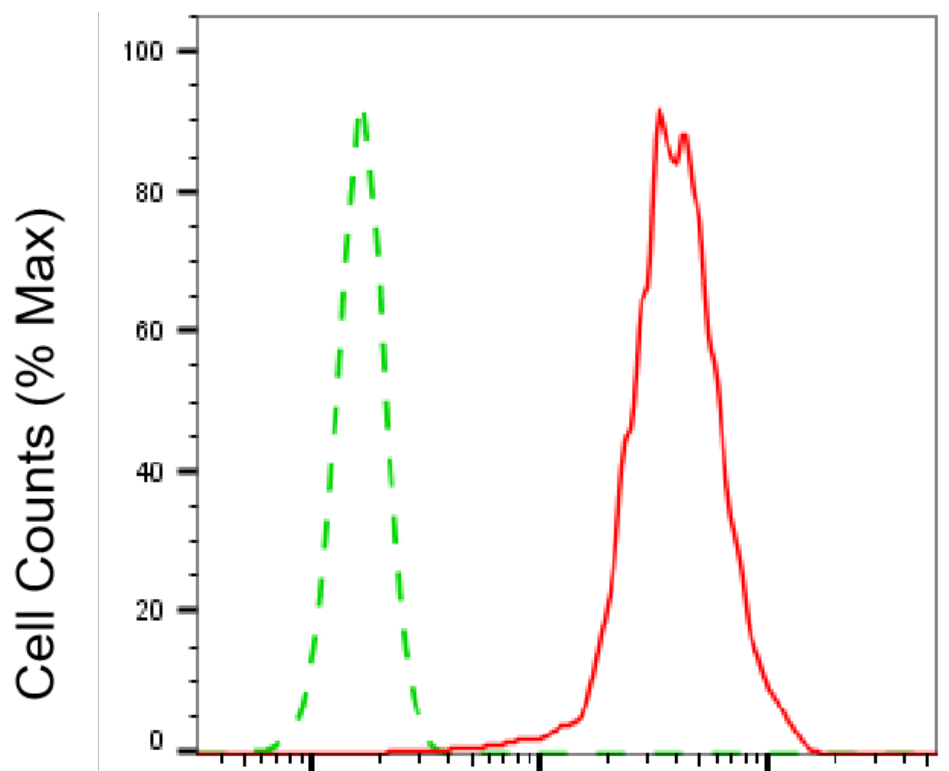
WWW.GENUINBIOTECH.COM

Anti-cleaved Caspase-9 Recombinant Rabbit Monoclonal Antibody

PAGE 2

Note: This product is for research use only.

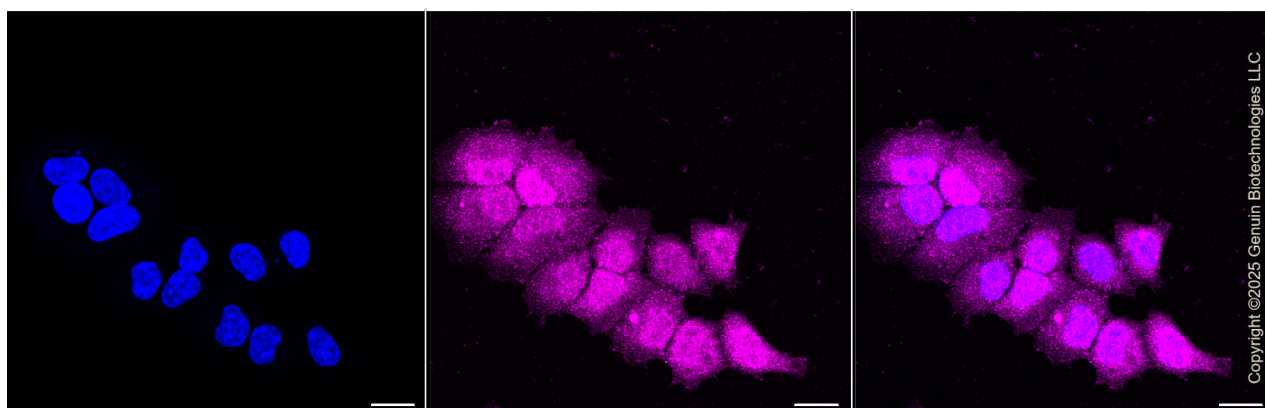
Validation Data



Copyright ©2025 Genuin Biotechnologies LLC

cleaved Caspase-9-Alexa Fluor® 647

Flow cytometric analysis of cleaved Caspase-9 expression in HepG2 cells using anti-cleaved Caspase-9 antibody (Cat#4188, 1:2,000). Green, isotype control; red, cleaved Caspase-9.



Copyright ©2025 Genuin Biotechnologies LLC

Immunocytochemical staining of HepG2 cells with anti-cleaved Caspase-9 antibody (Cat#4188, 1:1,000). Nuclei were stained blue with DAPI; cleaved Caspase-9 was stained magenta with Alexa Fluor® 647. Images were taken using Leica stellaris 5. Protein abundance based on laser Intensity

SUPPORT

SUPPORT@GENUINBIOTECH.COM
TEL: +1-540-855-7041

ORDERS

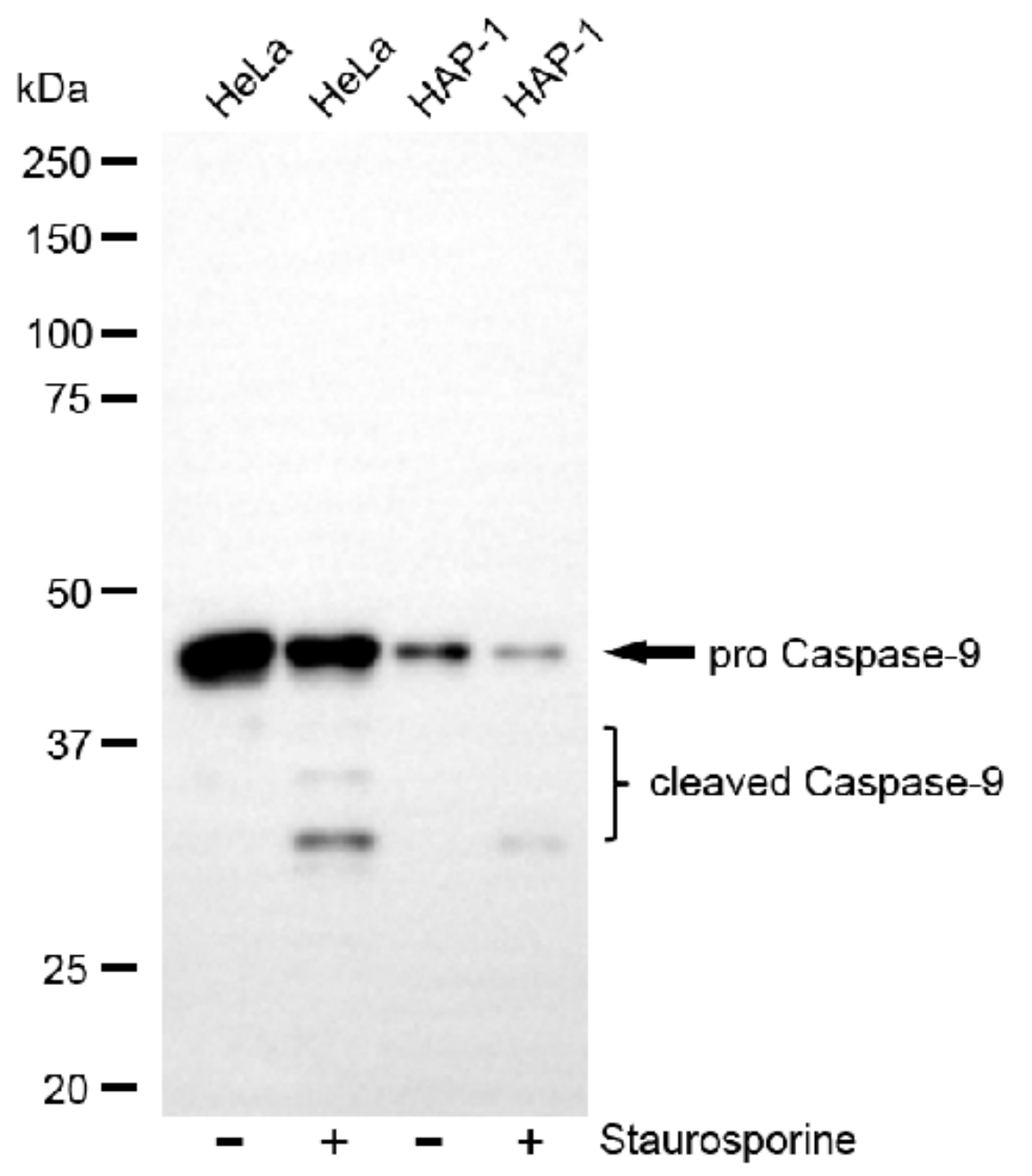
SALES@GENUINBIOTECH.COM
FAX: +1-540-855-7041

WWW.GENUINBIOTECH.COM

Anti-cleaved Caspase-9 Recombinant Rabbit Monoclonal Antibody

PAGE 3

and smart gain: Medium. Scale bar, 20 μ m.



Copyright ©2025 Genuin Biotechnologies LLC

Western blotting analysis using anti-cleaved Caspase-9 antibody (Cat#4188). Total cell lysates (30 μ g) from various cell lines were loaded and separated by SDS-PAGE. The blot was incubated with anti-cleaved Caspase-9 antibody (Cat#4188, 1:5,000) and HRP-conjugated goat anti-rabbit secondary antibody (Cat#201, 1:20,000) respectively. Image was developed using FeQ™ ECL Substrate Kit (Cat#226).

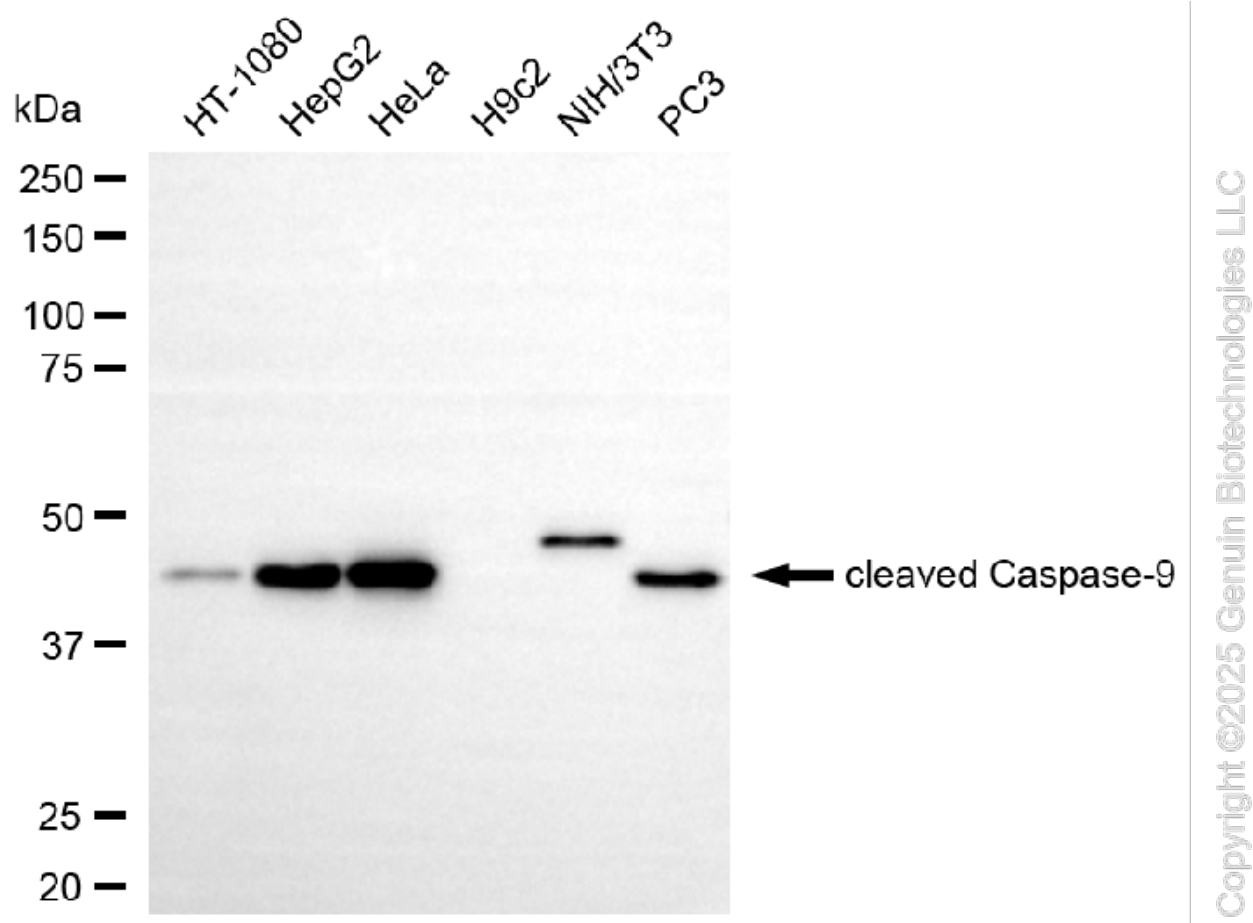
SUPPORT

SUPPORT@GENUINBIOTECH.COM
TEL: +1-540-855-7041

ORDERS

SALES@GENUINBIOTECH.COM
FAX: +1-540-855-7041

WWW.GENUINBIOTECH.COM



Western blotting analysis using anti-cleaved Caspase-9 antibody (Cat#4188). Total cell lysates (30 µg) from various cell lines were loaded and separated by SDS-PAGE. The blot was incubated with anti-cleaved Caspase-9 antibody (Cat#4188, 1:5,000) and HRP-conjugated goat anti-rabbit secondary antibody (Cat#201, 1:20,000) respectively. Image was developed using FeQ™ ECL Substrate Kit (Cat#226).