

Anti-NQO2 Recombinant Rabbit Monoclonal Antibody



Catalog #: 4190

Aliases

N-Ribosyldihydronicotinamide:Quinone Dehydrogenase 2; QR2; N-Ribosyldihydronicotinamide:Quinone Reductase 2; NRH:Quinone Oxidoreductase 2; Quinone Reductase 2; NMOR2; DHQV; DIA6; Ribosyldihydronicotinamide Dehydrogenase [Quinone]; NAD(P)H Quinone Dehydrogenase 2; NAD(P)H Menadione Oxidoreductase-1, Dioxin-Inducible-2; NAD(P)H Menadione Oxidoreductase 2, Dioxin-Inducible; Ribosyldihydronicotinamide Dehydrogenase; NAD(P)H Dehydrogenase, Quinone 2; NRH Dehydrogenase [Quinone] 2; EC 1.10.5.1

Background

Gene Name: NQO2

NCBI Gene Entry: [4835](#)

UniProt Entry: [P16083](#)

Application Information

Molecular Weight: Predicted, 26 kDa; observed, 26 kDa

Clonality: Rabbit monoclonal antibody

Clone ID: 24GB9985

Species Reactivity: Human, mouse

Applications Tested: Western blotting (WB), immunocytochemistry (IC)

Immunogen

A synthesized peptide derived from human NQO2

Isotype

Rabbit IgG

Storage Buffer

Supplied in PBS (pH 7.4) containing 50% glycerol, and 0.02% sodium azide.

Storage

Store at -20 °C for one year.

Recommended Dilutions

Western Blotting (WB): 1:1,000-1:5,000

Immunocytochemistry (IC): 1:100-1:1,000

SUPPORT

SUPPORT@GENUINBIOTECH.COM
TEL: +1-540-855-7041

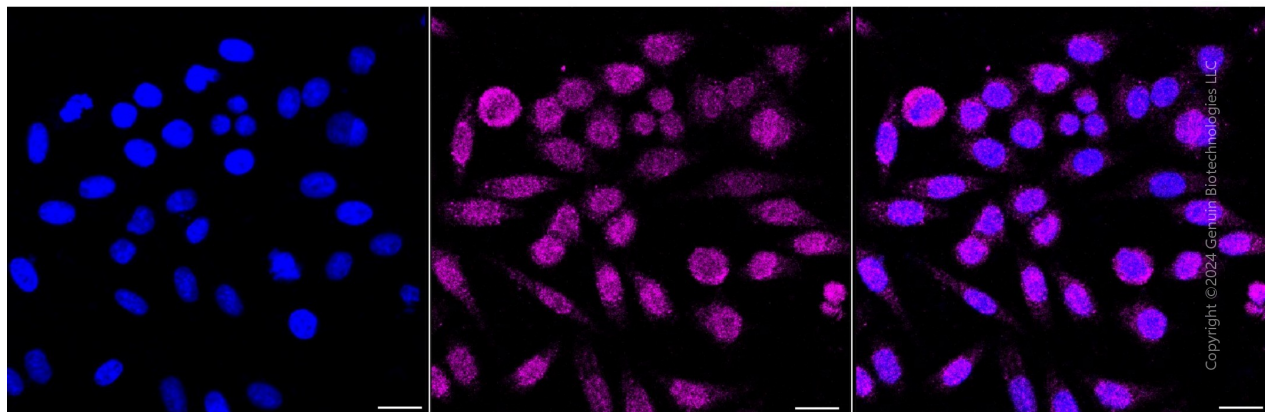
ORDERS

SALES@GENUINBIOTECH.COM
FAX: +1-540-855-7041

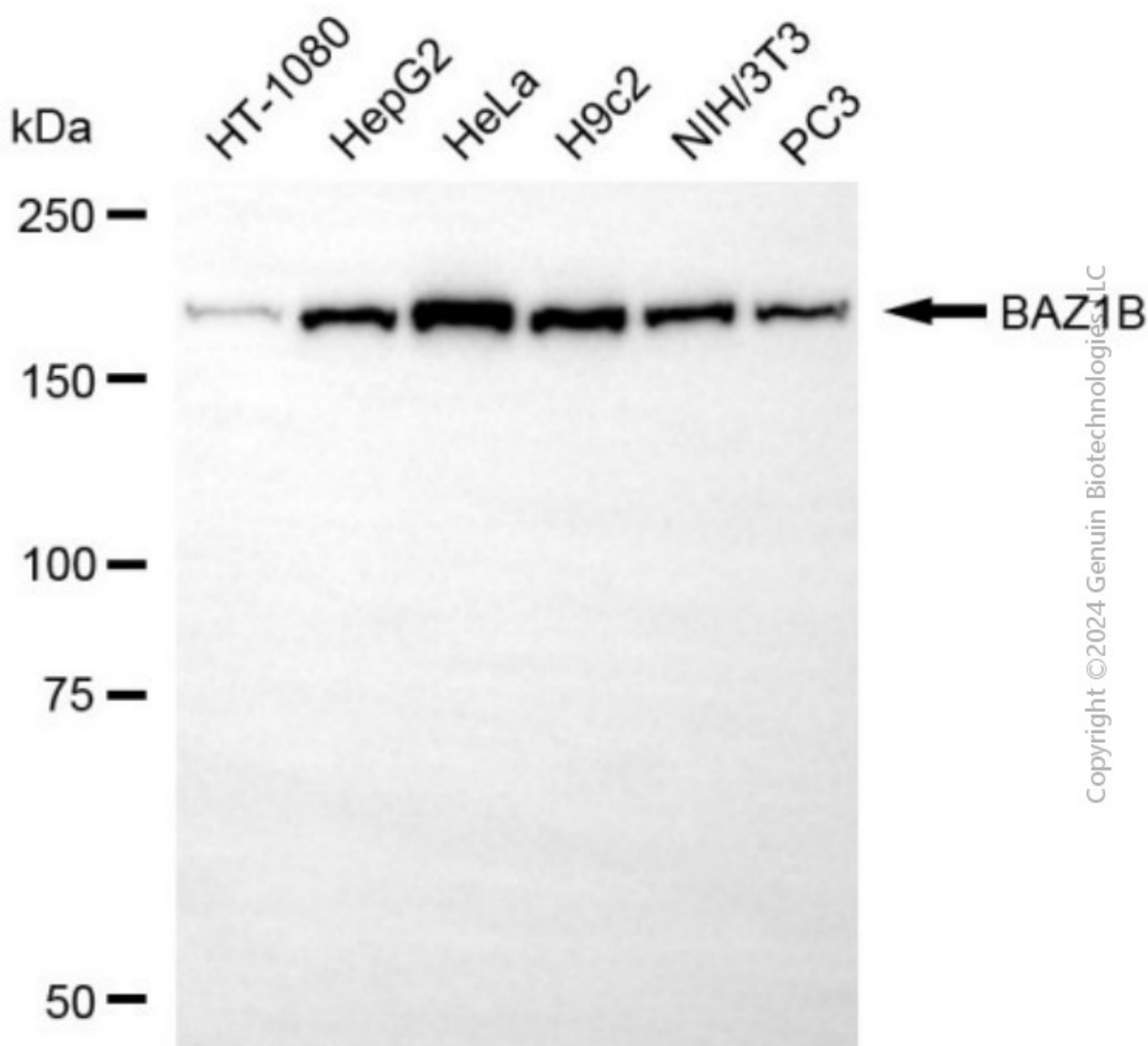
WWW.GENUINBIOTECH.COM

Note: This product is for research use only.

Validation Data



Immunocytochemical staining of HepG2 cells with anti-NQO2 antibody (Cat#4190, 1:1,000). Nuclei were stained blue with DAPI; NQO2 was stained magenta with Alexa Fluor® 647. Images were taken using Leica stellaris 5. Protein abundance based on laser Intensity and smart gain: Low. Scale bar, 20 μ m.



Western blotting analysis using anti-NQO2 antibody (Cat#4190). Total cell lysates (30 µg) from various cell lines were loaded and separated by SDS-PAGE. The blot was incubated with anti-NQO2 antibody (Cat#4190, 1:5,000) and HRP-conjugated goat anti-rabbit secondary antibody (Cat#201, 1:20,000) respectively. Image was developed using NaQ™ ECL Substrate Kit (Cat#716).