

# Anti-IKK $\alpha$ Recombinant Rabbit Monoclonal Antibody



**Catalog #: 4197**

## Aliases

CHUK; Component Of Inhibitor Of Nuclear Factor Kappa B Kinase Complex; IKK-Alpha; NFKB1A; IKK1; IKKA; Inhibitor Of Nuclear Factor Kappa-B Kinase Subunit Alpha; Conserved Helix-Loop-Helix Ubiquitous Kinase; IkbKA; TCF16; Transcription Factor 16; I-Kappa-B Kinase 1; EC 2.7.11.10; IKK-1; Nuclear Factor NF-Kappa-B Inhibitor Kinase Alpha; Nuclear Factor NfKappaB Inhibitor Kinase Alpha; Ikb Kinase Alpha Subunit; I-Kappa-B Kinase-Alpha; I-Kappa-B Kinase Alpha; I-Kappa-B Kinase; IkappaB Kinase; IKK-A Kinase; EC 2.7.11; TCF-16; IKBKA; IKK-A; BPS2

## Background

Gene Name: CHUK

NCBI Gene Entry: [1147](#)

UniProt Entry: [O15111](#)

## Application Information

Molecular Weight: Predicted, 85 kDa; observed, 85 kDa

Clonality: Rabbit monoclonal antibody

Clone ID: 24GB10020

Species Reactivity: Human, mouse, rat

Applications Tested: Western blotting (WB), flow cytometry (FCM)

## Immunogen

A synthesized peptide derived from human IKK  $\alpha$

## Isotype

Rabbit IgG

## Storage Buffer

Supplied in PBS (pH 7.4) containing 50% glycerol, and 0.02% sodium azide.

## Storage

Store at -20 °C for one year.

## Recommended Dilutions

Western Blotting (WB): 1:4,000-1:20,000

Flow Cytometry (FCM): 1:2,000

---

### SUPPORT

SUPPORT@GENUINBIOTECH.COM  
TEL: +1-540-855-7041

### ORDERS

SALES@GENUINBIOTECH.COM  
FAX: +1-540-855-7041

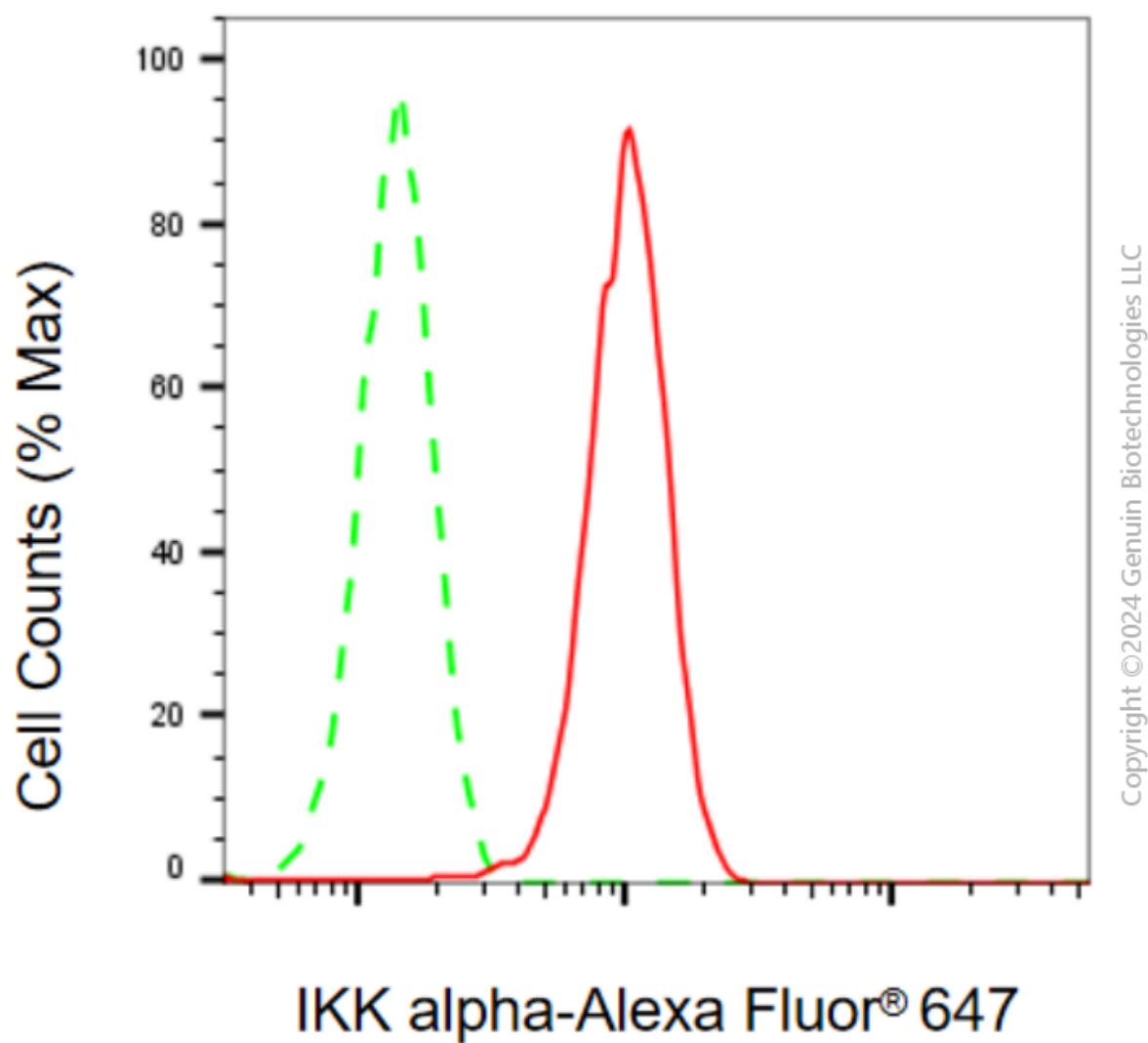
[WWW.GENUINBIOTECH.COM](http://WWW.GENUINBIOTECH.COM)

# Anti-IKK $\alpha$ Recombinant Rabbit Monoclonal Antibody

PAGE 2

**Note:** This product is for research use only.

## Validation Data



Flow cytometric analysis of IKK alpha expression in HepG2 cells using anti-IKK alpha antibody (Cat#4197, 1:2,000). Green, isotype control; red, IKK alpha.

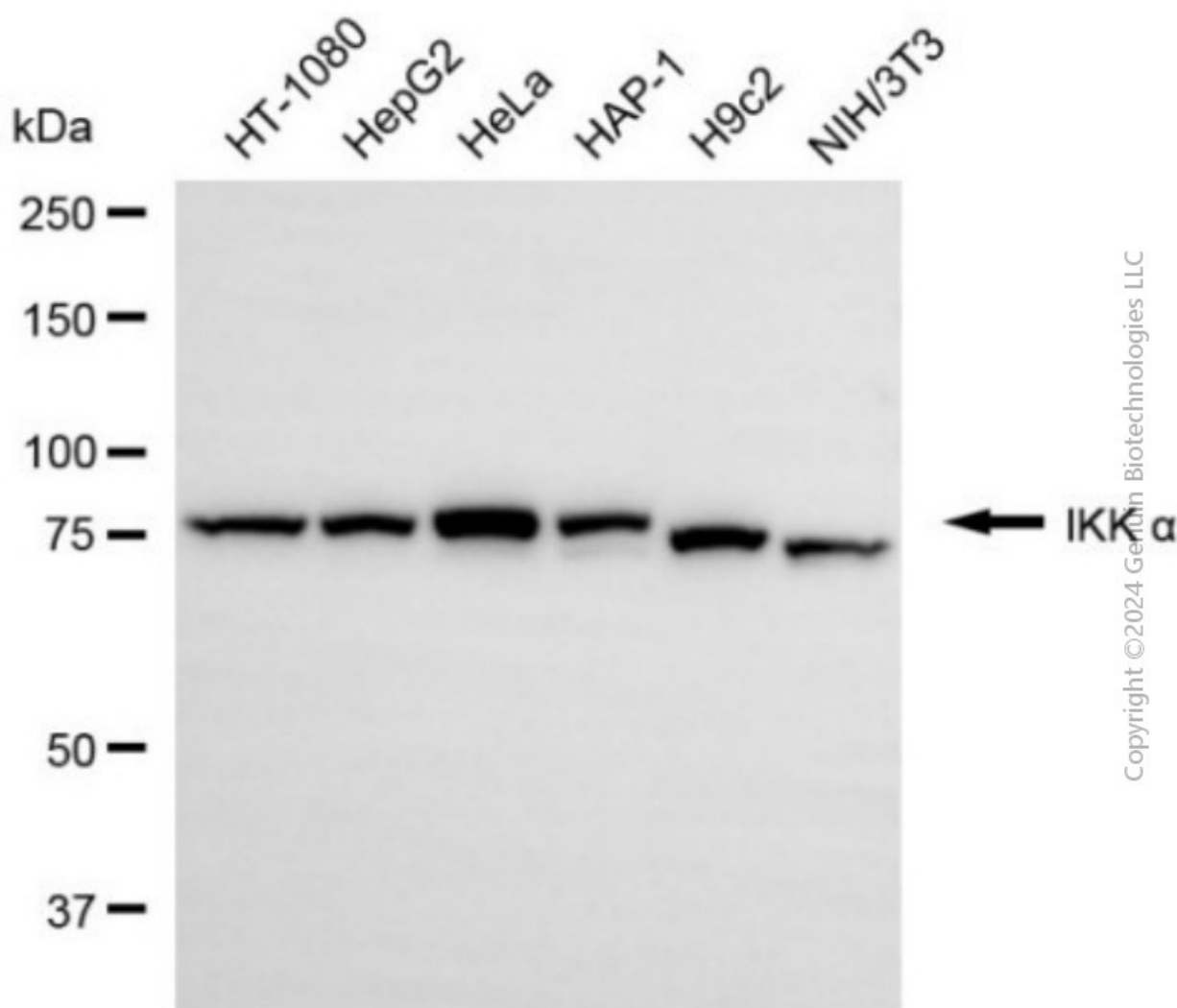
### SUPPORT

SUPPORT@GENUINBIOTECH.COM  
TEL: +1-540-855-7041

### ORDERS

SALES@GENUINBIOTECH.COM  
FAX: +1-540-855-7041

[WWW.GENUINBIOTECH.COM](http://WWW.GENUINBIOTECH.COM)



Western blotting analysis using anti-IKK  $\alpha$  antibody (Cat#4197). Total cell lysates (30  $\mu$ g) from various cell lines were loaded and separated by SDS-PAGE. The blot was incubated with anti-IKK  $\alpha$  antibody (Cat#4197, 1:20,000) and HRP-conjugated goat anti-rabbit secondary antibody (Cat#201, 1:20,000) respectively. Image was developed using NaQ<sup>TM</sup> ECL Substrate Kit (Cat#716).