

Anti-Retinoic Acid Receptor Alpha Recombinant Rabbit Monoclonal Antibody



Catalog #: 4203

Aliases

Retinoic Acid Receptor Alpha; RAR-Alpha; NR1B1; RARalpha; RAR; Nuclear Receptor Subfamily 1 Group B Member 1; Nucleophosmin-Retinoic Acid Receptor Alpha Fusion Protein NPM-RAR Long Form; Retinoic Acid Receptor, Alpha Polypeptide; Retinoic Acid Receptor, Alpha; PML-DDX5-RARA Fusion Protein; PML-DDX5-RARA Fusion

Background

Gene Name: RARA

NCBI Gene Entry: [5914](#)

UniProt Entry: [P10276](#)

Application Information

Molecular Weight: Predicted, 51 kDa; observed, 55 kDa

Clonality: Rabbit monoclonal antibody

Clone ID: 24GB10050

Species Reactivity: Human, mouse, rat

Applications Tested: Western blotting (WB), immunocytochemistry (IC)

Immunogen

A synthesized peptide derived from human Retinoic Acid Receptor alpha

Isotype

Rabbit IgG

Storage Buffer

Supplied in PBS (pH 7.4) containing 50% glycerol, and 0.02% sodium azide.

Storage

Store at -20 °C for one year.

Recommended Dilutions

Western Blotting (WB): 1:1,000-1:5,000

Immunocytochemistry (IC): 1:100-1:1,000

Note: This product is for research use only.

SUPPORT

SUPPORT@GENUINBIOTECH.COM
TEL: +1-540-855-7041

ORDERS

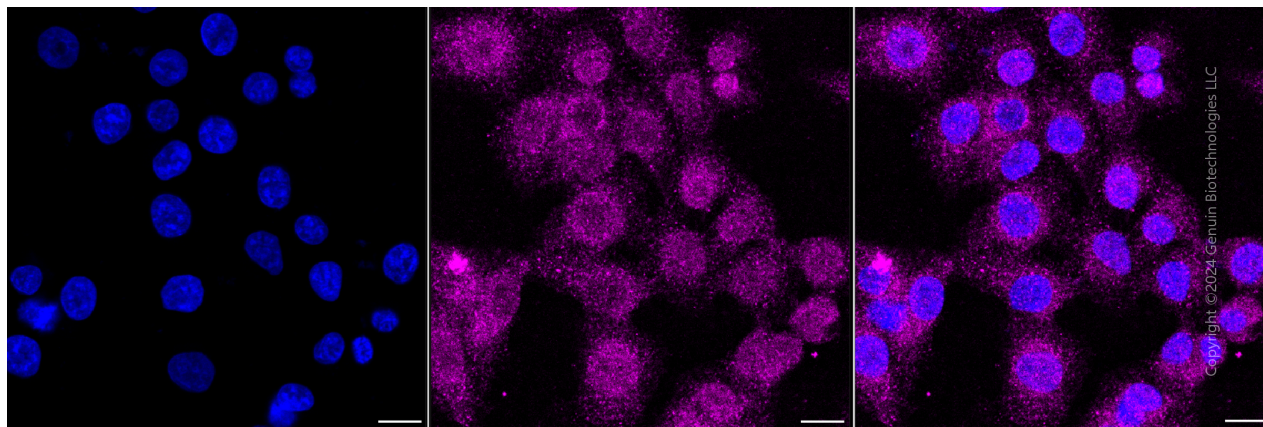
SALES@GENUINBIOTECH.COM
FAX: +1-540-855-7041

WWW.GENUINBIOTECH.COM

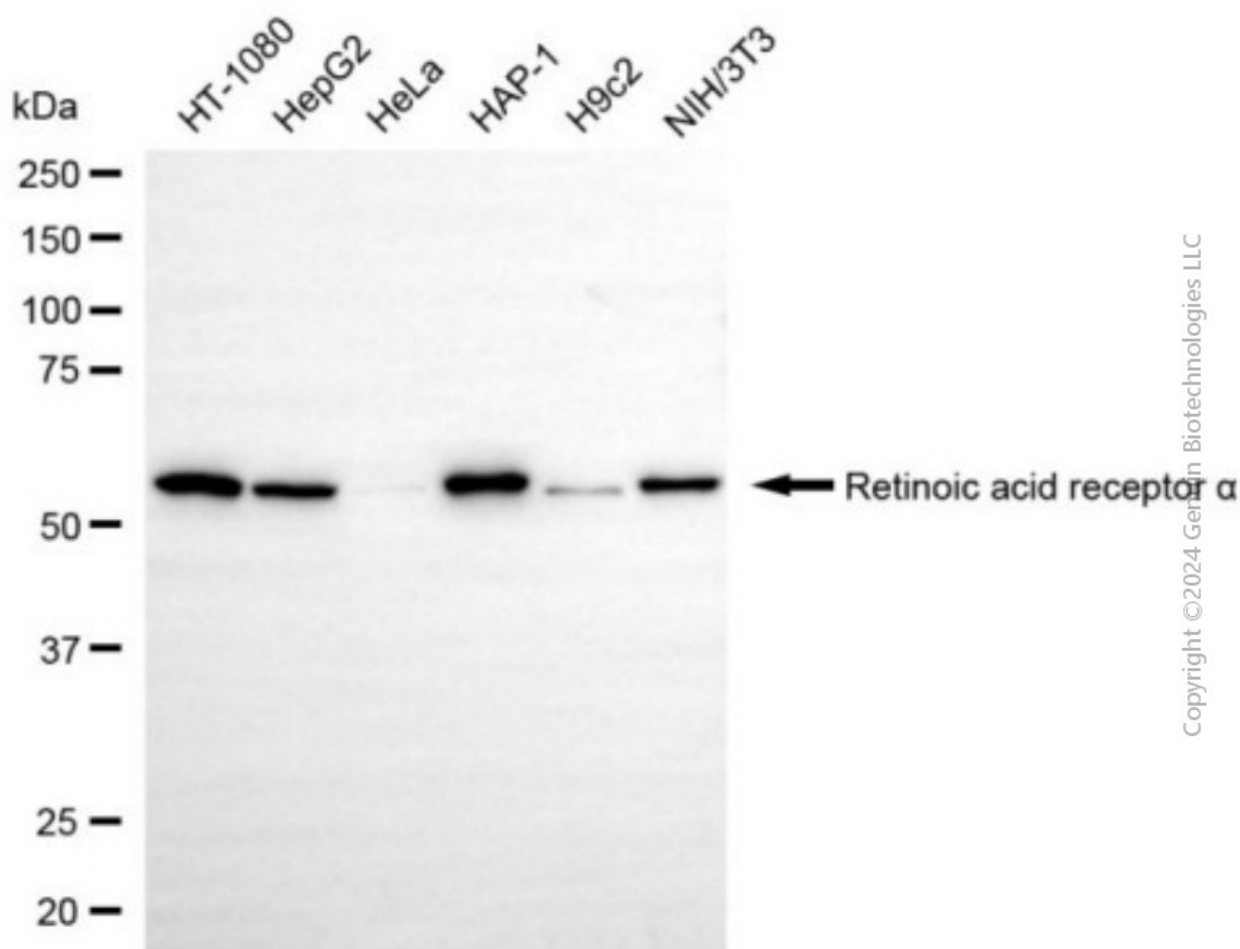
Anti-Retinoic Acid Receptor Alpha Recombinant Rabbit Monoclonal Antibody

PAGE 2

Validation Data



Immunocytochemical staining of HT-1080 cells with anti-retinoic acid receptor alpha antibody (Cat#4203, 1:1,000). Nuclei were stained blue with DAPI; Retinoic acid receptor alpha was stained magenta with Alexa Fluor® 647. Images were taken using Leica stellaris 5. Protein abundance based on laser Intensity and smart gain: Medium. Scale bar, 20 μ m.



SUPPORT

SUPPORT@GENUINBIOTECH.COM
TEL: +1-540-855-7041

ORDERS

SALES@GENUINBIOTECH.COM
FAX: +1-540-855-7041

WWW.GENUINBIOTECH.COM

Anti-Retinoic Acid Receptor Alpha Recombinant Rabbit Monoclonal Antibody

PAGE 3

Western blotting analysis using anti-retinoic acid receptor alpha antibody (Cat#4203). Total cell lysates (30 µg) from various cell lines were loaded and separated by SDS-PAGE. The blot was incubated with anti-retinoic acid receptor alpha antibody (Cat#4203, 1:5,000) and HRP-conjugated goat anti-rabbit secondary antibody (Cat#201, 1:20,000) respectively. Image was developed using NaQ™ ECL Substrate Kit (Cat#716).

SUPPORT

SUPPORT@GENUINBIOTECH.COM
TEL: +1-540-855-7041

ORDERS

SALES@GENUINBIOTECH.COM
FAX: +1-540-855-7041

WWW.GENUINBIOTECH.COM