

# Anti-MAP1LC3A Recombinant Rabbit Monoclonal Antibody



**Catalog #: 4206**

## Aliases

MAP1LC3A; Microtubule Associated Protein 1 Light Chain 3 Alpha; MAP1BLC3; MAP1ALC3; ATG8E; LC3A; LC3; Microtubule-Associated Proteins 1A/1B Light Chain 3A; Autophagy-Related Ubiquitin-Like Modifier LC3 A; MAP1 Light Chain 3-Like Protein 1; MAP1A/MAP1B Light Chain 3 A; MAP1A/MAP1B LC3 A; Microtubule-Associated Protein 1 Light Chain 3 Alpha; Microtubule-Associated Proteins 1A/1B Light Chain 3; Autophagy-Related Protein LC3 A; MAP1A/1B Light Chain 3 A

## Background

Gene Name: MAP1LC3A

NCBI Gene Entry: [84557](#)

UniProt Entry: [Q9H492](#)

## Application Information

Molecular Weight: Predicted, 14 kDa; observed, 14;16 kDa

Clonality: Rabbit monoclonal antibody

Clone ID: 24GB10065

Species Reactivity: Human, mouse, rat

Applications Tested: Western blotting (WB), immunocytochemistry (IC)

## Immunogen

A synthesized peptide derived from human LC3A

## Isotype

Rabbit IgG

## Storage Buffer

Supplied in PBS (pH 7.4) containing 50% glycerol, and 0.02% sodium azide.

## Storage

Store at -20 °C for one year.

## Recommended Dilutions

Western Blotting (WB): 1:4,000-1:20,000

Immunocytochemistry (IC): 1:100-1:1,000

---

### SUPPORT

SUPPORT@GENUINBIOTECH.COM  
TEL: +1-540-855-7041

### ORDERS

SALES@GENUINBIOTECH.COM  
FAX: +1-540-855-7041

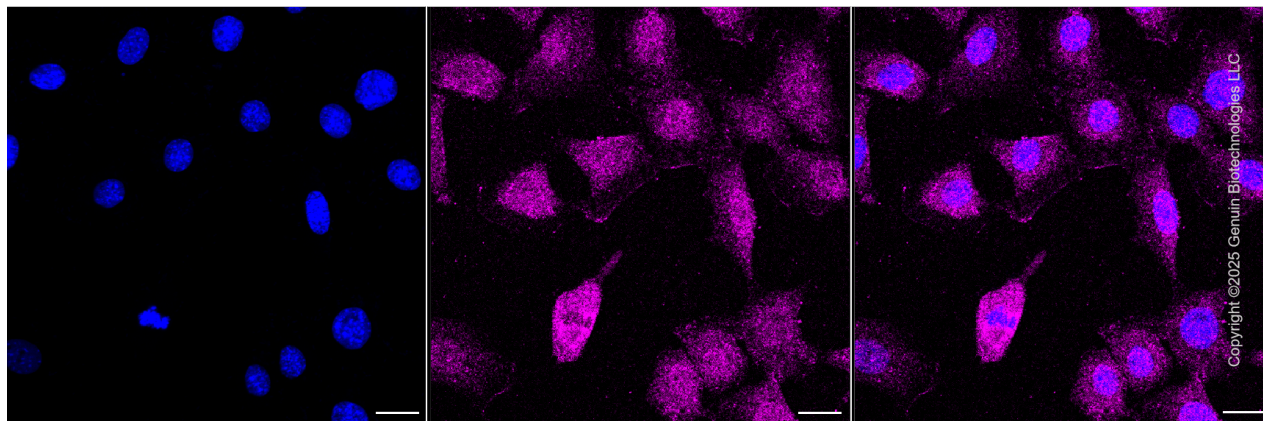
[WWW.GENUINBIOTECH.COM](http://WWW.GENUINBIOTECH.COM)

# Anti-MAP1LC3A Recombinant Rabbit Monoclonal Antibody

PAGE 2

**Note:** This product is for research use only.

## Validation Data



Immunocytochemical staining of C2C12 cells with anti-MAP1LC3A antibody (Cat#4206, 1:1,000) . Nuclei were stained blue with DAPI; MAP1LC3A was stained magenta with Alexa Fluor® 647. Images were taken using Leica stellaris 5. Protein abundance based on laser Intensity and smart gain: Medium. Scale bar, 20  $\mu$ m.

---

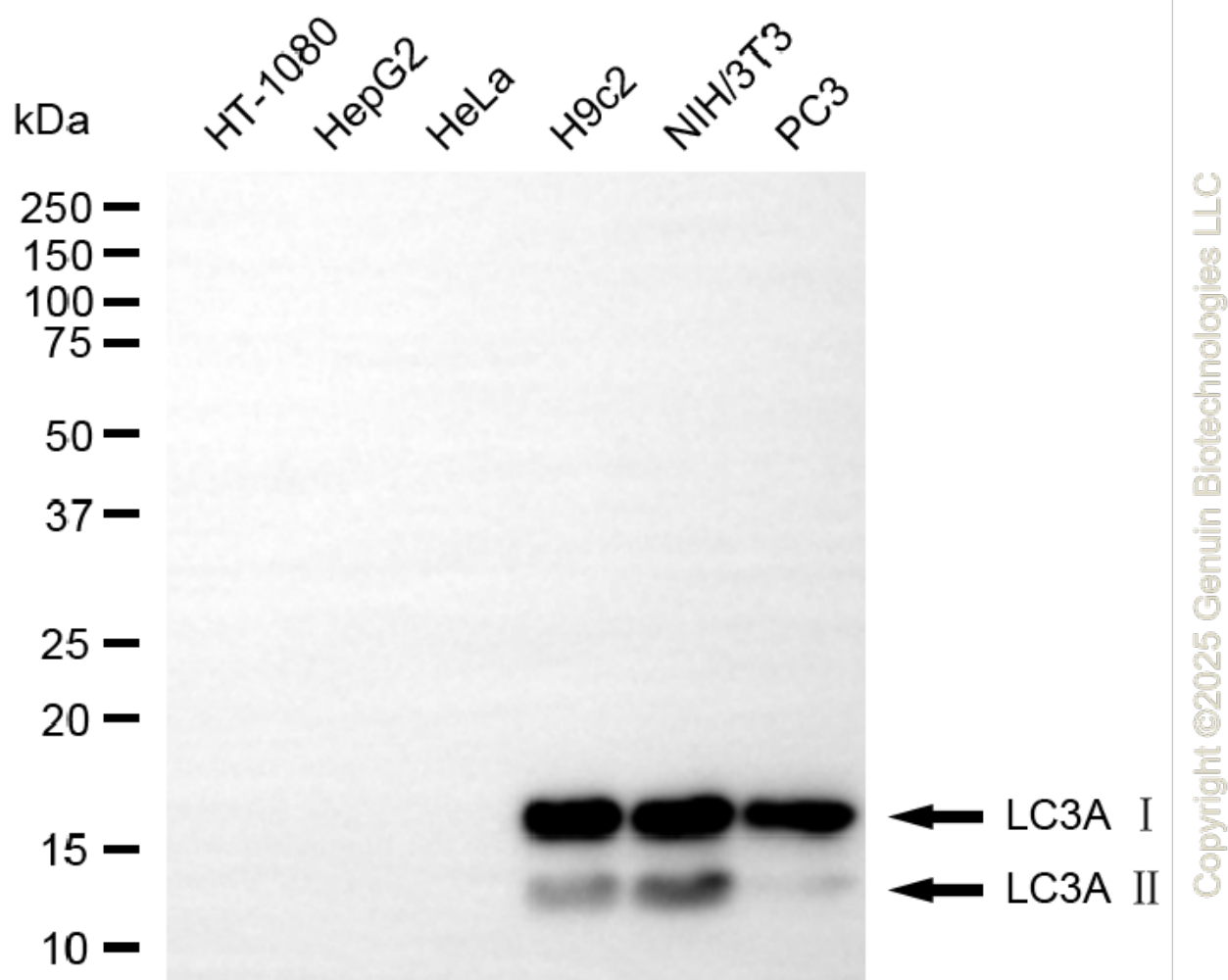
### SUPPORT

SUPPORT@GENUINBIOTECH.COM  
TEL: +1-540-855-7041

### ORDERS

SALES@GENUINBIOTECH.COM  
FAX: +1-540-855-7041

[WWW.GENUINBIOTECH.COM](http://WWW.GENUINBIOTECH.COM)



Western blotting analysis using anti-LC3A antibody (Cat#4206). Total cell lysates (30 µg) from various cell lines were loaded and separated by SDS-PAGE. The blot was incubated with anti-LC3A antibody (Cat#4206, 1:20,000) and HRP-conjugated goat anti-rabbit secondary antibody (Cat#201, 1:20,000) respectively. Image was developed using NaQ™ ECL Substrate Kit (Cat#716).