

# Anti-AP2M1 Recombinant Rabbit Monoclonal Antibody



**Catalog #: 4208**

## Aliases

AP2M1; Adaptor Related Protein Complex 2 Subunit Mu 1; CLAPM1; AP50; Clathrin-Associated/Assembly/Adaptor Protein, Medium 1; Clathrin Assembly Protein Complex 2 Mu Medium Chain; Clathrin Assembly Protein Complex 2 Medium Chain; Adaptor Related Protein Complex 2 Mu 1 Subunit; Adaptor-Related Protein Complex 2 Subunit Mu; Plasma Membrane Adaptor AP-2 50 KDa Protein; Plasma Membrane Adaptor AP-2 50kDA Protein; Clathrin Adaptor Complex AP2, Mu Subunit; Adaptor Protein Complex AP-2 Subunit Mu; Clathrin Coat-Associated Protein AP50; Clathrin Coat Assembly Protein AP50; Clathrin Coat Adaptor Protein AP50; AP-2 Complex Subunit Mu; HA2 50 KDA Subunit; AP-2 Mu 2 Chain; Adaptin-Mu2; Mu2; HA2 50 KDa Subunit; AP-2 Mu Chain; KIAA0109; MRD60; MU2

## Background

Gene Name: AP2M1

NCBI Gene Entry: [1173](#)

UniProt Entry: [Q96CW1](#)

## Application Information

Molecular Weight: Predicted, 50 kDa; observed, 50 kDa

Clonality: Rabbit monoclonal antibody

Clone ID: 24GB10075

Species Reactivity: Human, mouse, rat

Applications Tested: Western blotting (WB), immunocytochemistry (IC)

## Immunogen

A synthesized peptide derived from human AP2M1

## Isotype

Rabbit IgG

## Storage Buffer

Supplied in PBS (pH 7.4) containing 50% glycerol, and 0.02% sodium azide.

## Storage

Store at -20 °C for one year.

## Recommended Dilutions

---

### SUPPORT

SUPPORT@GENUINBIOTECH.COM  
TEL: +1-540-855-7041

### ORDERS

SALES@GENUINBIOTECH.COM  
FAX: +1-540-855-7041

[WWW.GENUINBIOTECH.COM](http://WWW.GENUINBIOTECH.COM)

# Anti-AP2M1 Recombinant Rabbit Monoclonal Antibody

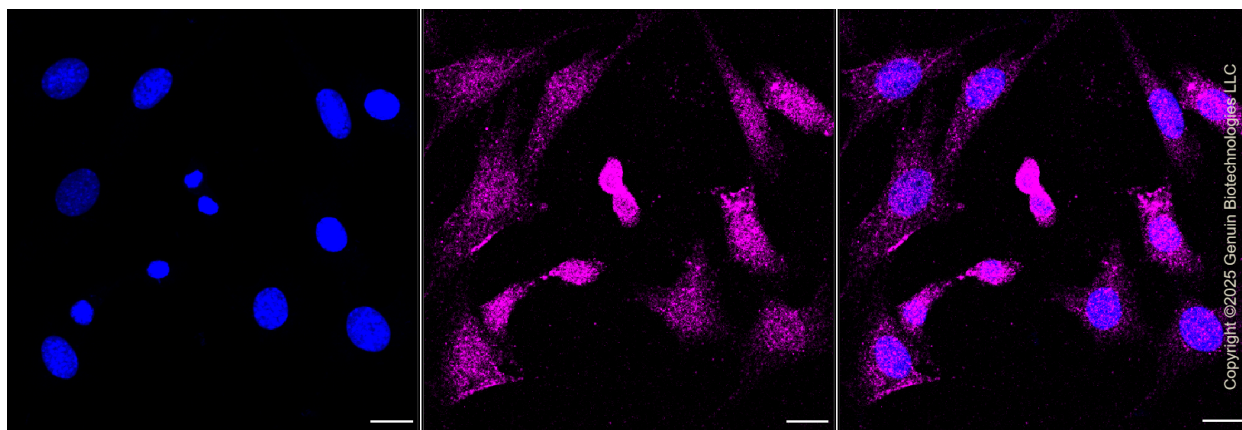
PAGE 2

Western blotting (WB): 1:1,000-1:5,000

Immunocytochemistry (IC): 1:100-1:1,000

**Note:** This product is for research use only.

## Validation Data



Immunocytochemical staining of C2C12 cells with anti-AP2M1 antibody (Cat#4208, 1:1,000). Nuclei were stained blue with DAPI; AP2M1 was stained magenta with Alexa Fluor® 647. Images were taken using Leica stellaris 5. Protein abundance based on laser Intensity and smart gain: Low. Scale bar, 20 µm.

---

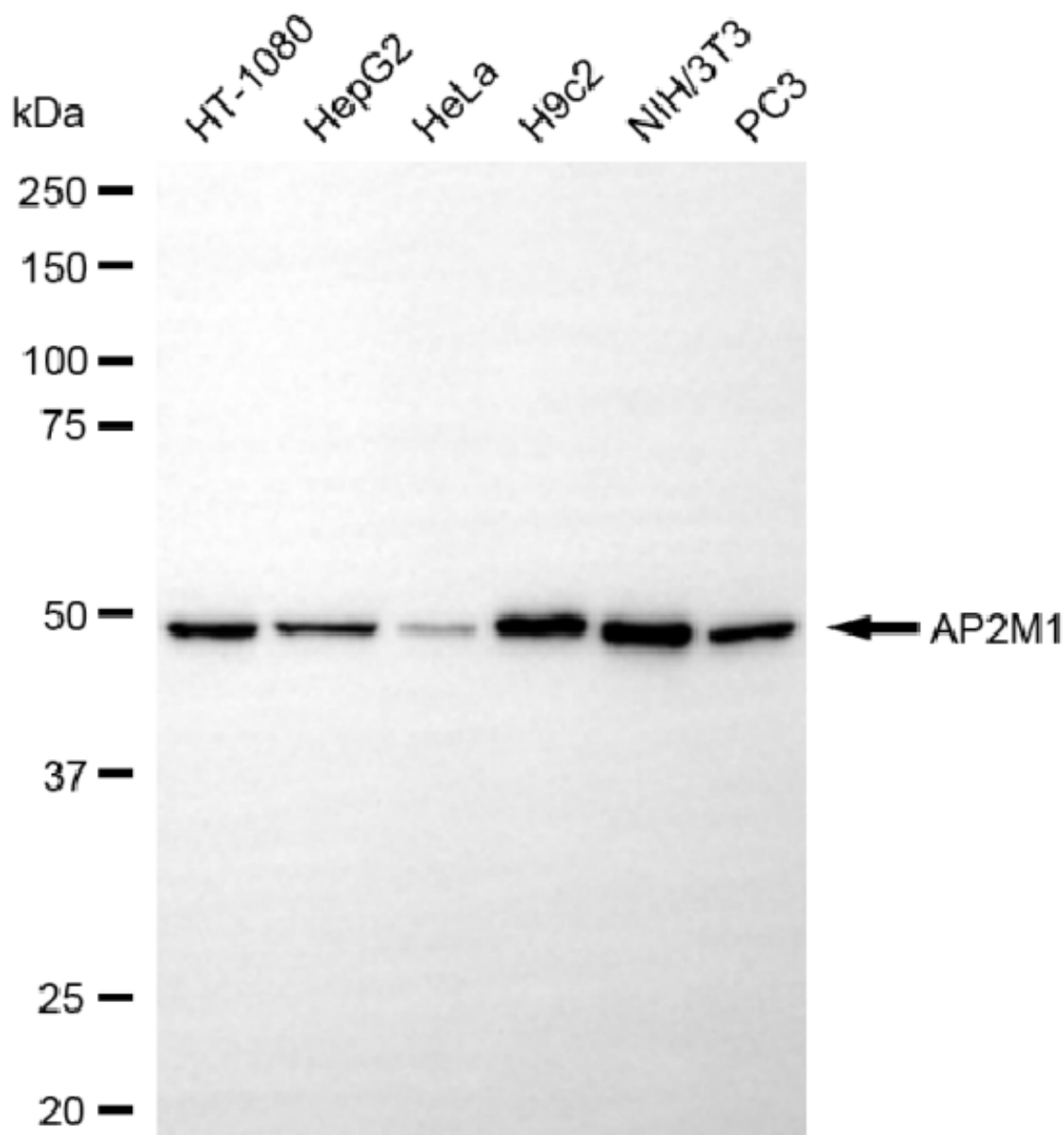
### SUPPORT

SUPPORT@GENUINBIOTECH.COM  
TEL: +1-540-855-7041

### ORDERS

SALES@GENUINBIOTECH.COM  
FAX: +1-540-855-7041

[WWW.GENUINBIOTECH.COM](http://WWW.GENUINBIOTECH.COM)



Copyright ©2025 Genuin Biotechnologies LLC

Western blotting analysis using anti-AP2M1 antibody (Cat#4208). Total cell lysates (30  $\mu$ g) from various cell lines were loaded and separated by SDS-PAGE. The blot was incubated with anti-AP2M1 antibody (Cat#4208, 1:5,000) and HRP-conjugated goat anti-rabbit secondary antibody (Cat#201, 1:20,000) respectively. Image was developed using NaQ™ ECL Substrate Kit (Cat#716).

## SUPPORT

SUPPORT@GENUINBIOTECH.COM  
TEL: +1-540-855-7041

## ORDERS

SALES@GENUINBIOTECH.COM  
FAX: +1-540-855-7041

[WWW.GENUINBIOTECH.COM](http://WWW.GENUINBIOTECH.COM)