

Anti-RAB7 Recombinant Rabbit Monoclonal Antibody



Catalog #: 4219

Aliases

RAB7A, Member RAS Oncogene Family; RAB7; RAB7, Member RAS Oncogene Family; Ras-Related Protein Rab-7a; CMT2B; Charcot-Marie-Tooth Neuropathy 2B; Ras-Associated Protein RAB7; EC 3.6.5.2; PRO2706

Background

Gene Name: RAB7A

NCBI Gene Entry: [7879](#)

UniProt Entry: [P51149](#)

Application Information

Molecular Weight: Predicted, 23 kDa; observed, 23 kDa

Clonality: Rabbit monoclonal antibody

Clone ID: 24GB10130

Species Reactivity: Human, mouse, rat

Applications Tested: Western blotting (WB), flow cytometry (FCM)

Immunogen

A synthesized peptide derived from human RAB7

Isotype

Rabbit IgG

Storage Buffer

Supplied in PBS (pH 7.4) containing 50% glycerol, and 0.02% sodium azide.

Storage

Store at -20 °C for one year.

Recommended Dilutions

Western Blotting (WB): 1:1,000-1:5,000

Flow Cytometry (FCM): 1:2,000

Note: This product is for research use only.

Validation Data

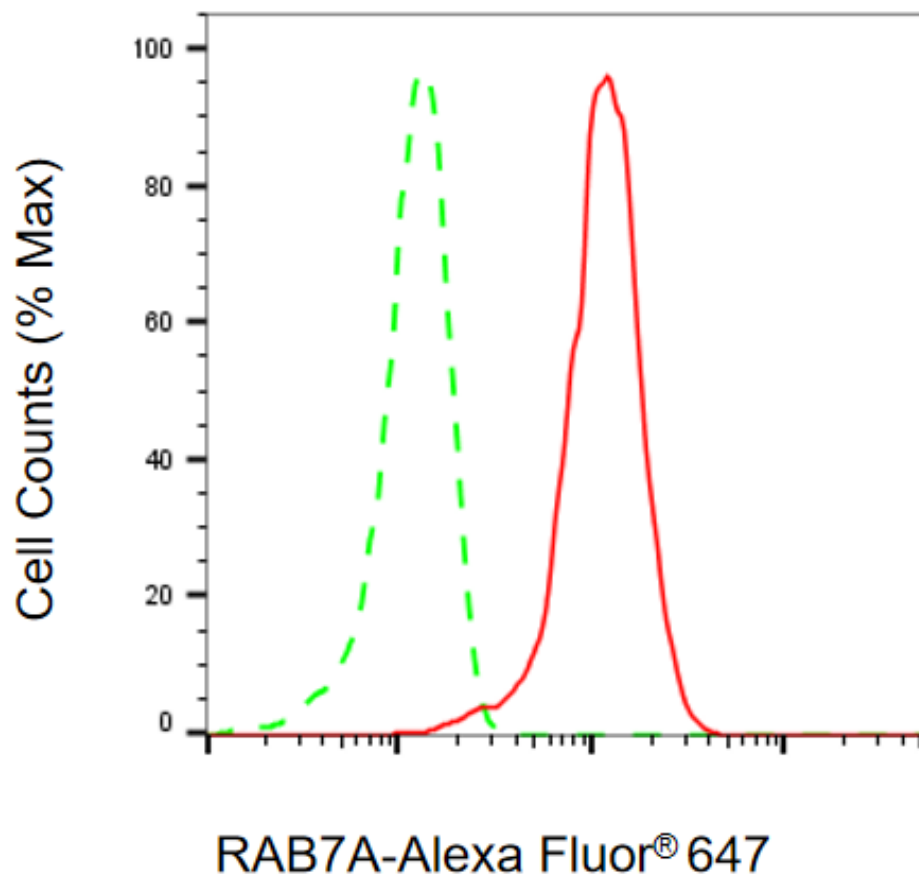
SUPPORT

SUPPORT@GENUINBIOTECH.COM
TEL: +1-540-855-7041

ORDERS

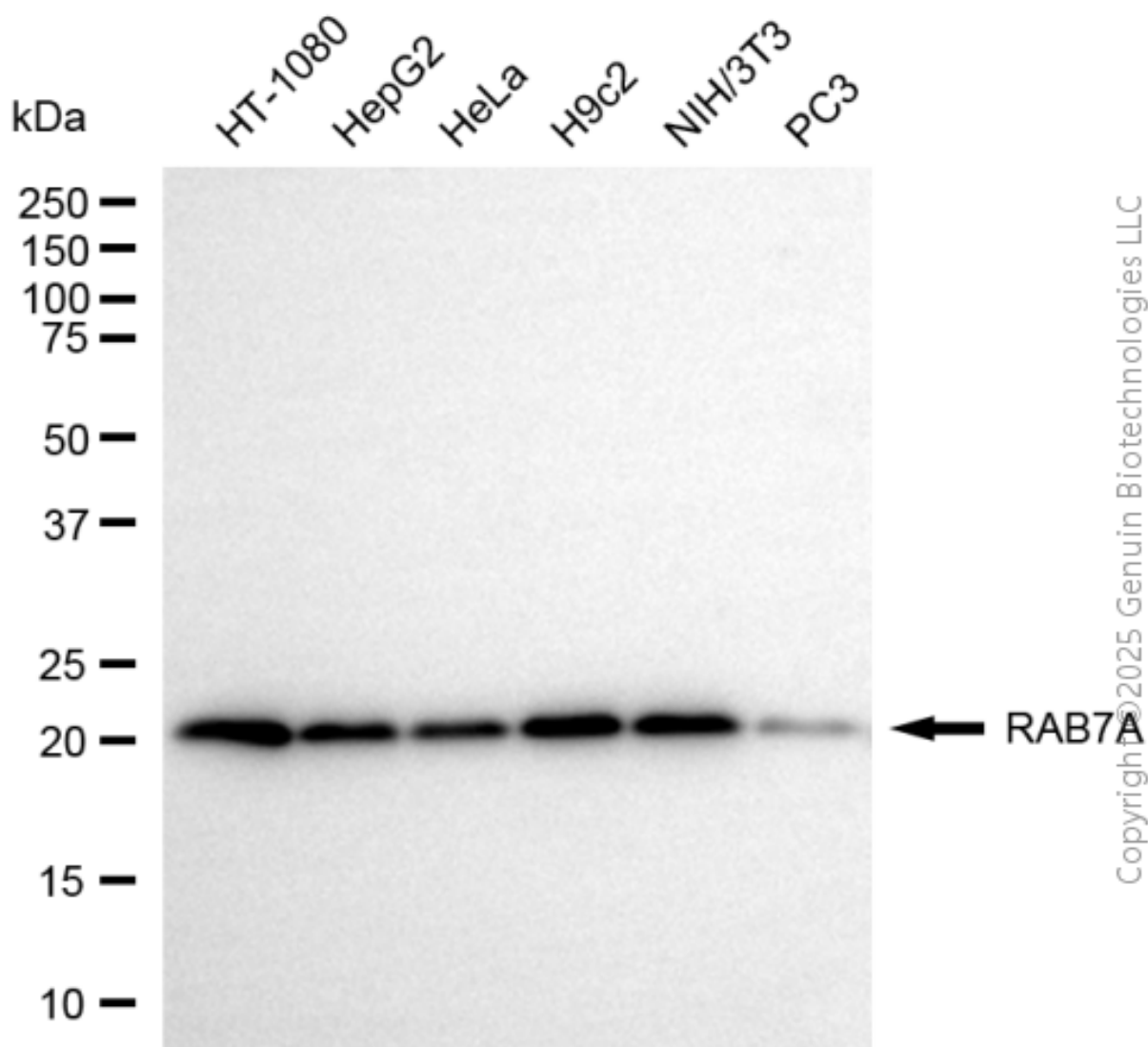
SALES@GENUINBIOTECH.COM
FAX: +1-540-855-7041

WWW.GENUINBIOTECH.COM



Copyright ©2025 Genuin Biotechnologies LLC

Flow cytometric analysis of RAB7A expression in H9c2 cells using anti-RAB7A antibody (Cat#4219, 1:2,000). Green, isotype control; red, RAB7A.



Western blotting analysis using anti-RAB7A antibody (Cat#4219). Total cell lysates (30 μ g) from various cell lines were loaded and separated by SDS-PAGE. The blot was incubated with anti-RAB7A antibody (Cat#4219, 1:5,000) and HRP-conjugated goat anti-rabbit secondary antibody (Cat#201, 1:20,000) respectively. Image was developed using NaQ™ ECL Substrate Kit (Cat#716).