

Anti-Cdk4 Recombinant Rabbit Monoclonal Antibody



Catalog #: 4220

Aliases

CDK4; Cyclin Dependent Kinase 4; PSK-J3; Cell Division Protein Kinase 4; Cyclin-Dependent Kinase 4; EC 2.7.11.22; EC 2.7.11; CMM3

Background

Gene Name: CDK4

NCBI Gene Entry: [1019](#)

UniProt Entry: [P11802](#)

Application Information

Molecular Weight: Predicted, 34 kDa; observed, 30 kDa

Clonality: Rabbit monoclonal antibody

Clone ID: 24GB10135

Species Reactivity: Human, rat

Applications Tested: Western blotting (WB), flow cytometry (FCM), immunocytochemistry (IC)

Immunogen

A synthesized peptide derived from human Cdk4

Isotype

Rabbit IgG

Storage Buffer

Supplied in PBS (pH 7.4) containing 50% glycerol, and 0.02% sodium azide.

Storage

Store at -20 °C for one year.

Recommended Dilutions

Western Blotting (WB): 1:1,000-1:5,000

Flow Cytometry (FCM): 1:2,000

Immunocytochemistry (IC): 1:100-1:1,000

Note: This product is for research use only.

Validation Data

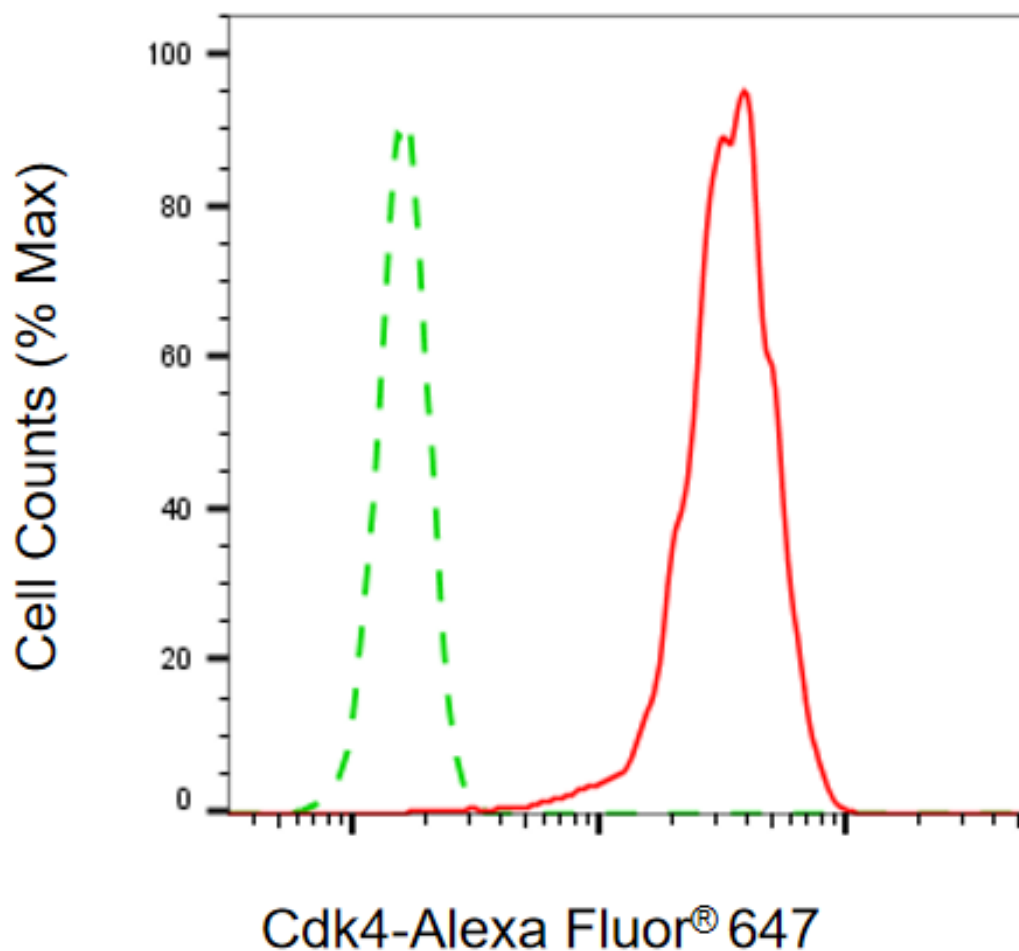
SUPPORT

SUPPORT@GENUINBIOTECH.COM
TEL: +1-540-855-7041

ORDERS

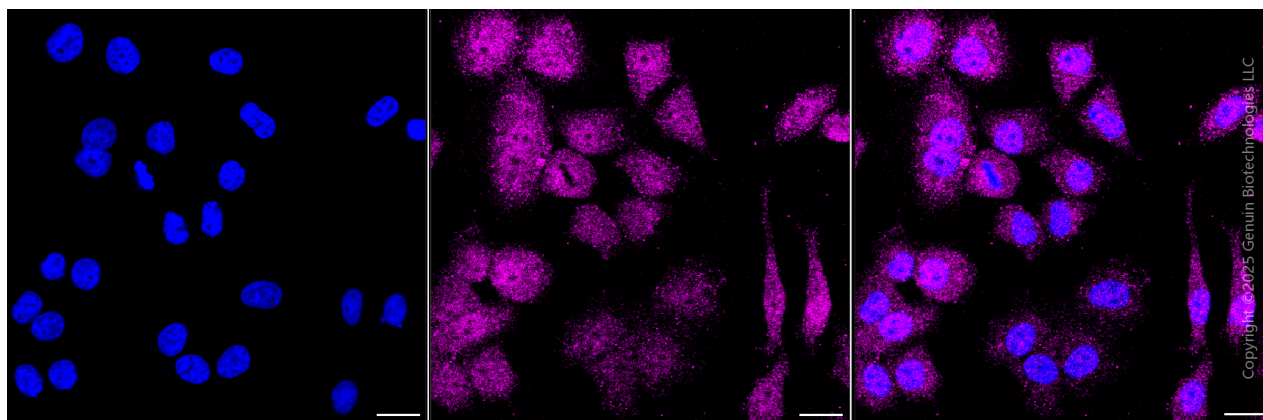
SALES@GENUINBIOTECH.COM
FAX: +1-540-855-7041

WWW.GENUINBIOTECH.COM



Copyright ©2025 Genuin Biotechnologies LLC

Flow cytometric analysis of Cdk4 expression in HepG2 cells using anti-Cdk4 antibody (Cat#4220, 1:2,000). Green, isotype control; red, Cdk4.



Immunocytochemical staining of HepG2 cells with anti-CDK4 antibody (Cat#4220, 1:1,000) . Nuclei were stained blue with DAPI; CDK4 was stained magenta with Alexa Fluor® 647. Images were taken using Leica stellaris 5. Protein abundance based on laser Intensity and smart gain:

SUPPORT

SUPPORT@GENUINBIOTECH.COM
TEL: +1-540-855-7041

ORDERS

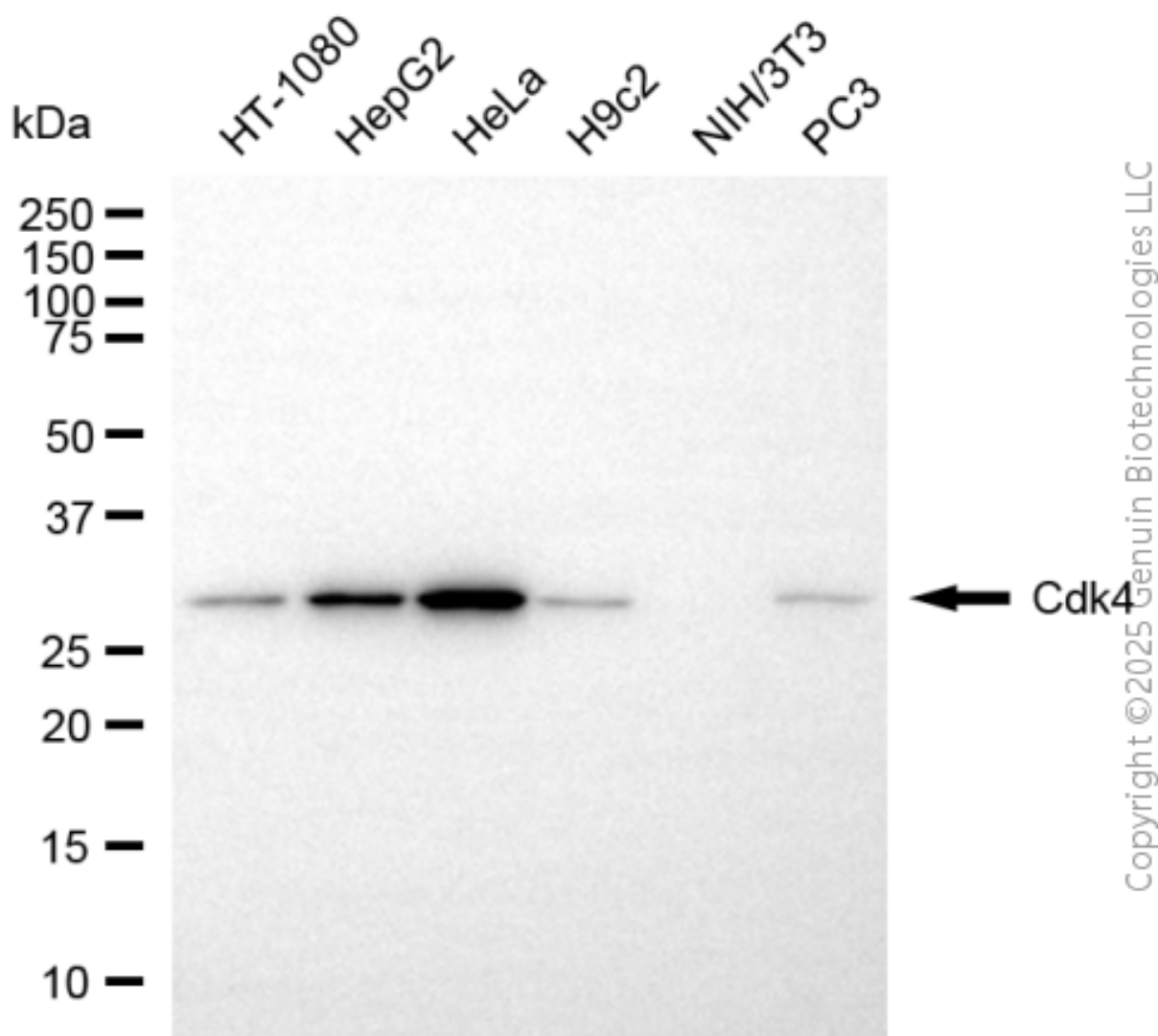
SALES@GENUINBIOTECH.COM
FAX: +1-540-855-7041

WWW.GENUINBIOTECH.COM

Anti-Cdk4 Recombinant Rabbit Monoclonal Antibody

PAGE 3

Medium. Scale bar, 20 μ m.



Western blotting analysis using anti-Cdk4 antibody (Cat#4220). Total cell lysates (30 μ g) from various cell lines were loaded and separated by SDS-PAGE. The blot was incubated with anti-Cdk4 antibody (Cat#4220, 1:5,000) and HRP-conjugated goat anti-rabbit secondary antibody (Cat#201, 1:20,000) respectively. Image was developed using NaQ™ ECL Substrate Kit (Cat#716).

SUPPORT

SUPPORT@GENUINBIOTECH.COM
TEL: +1-540-855-7041

ORDERS

SALES@GENUINBIOTECH.COM
FAX: +1-540-855-7041

WWW.GENUINBIOTECH.COM