

Anti-Caspase 6 Recombinant Rabbit Monoclonal Antibody



Catalog #: 4224

Aliases

CASP6; Caspase 6; CSP-6; MCH2; Caspase-6; Caspase 6, Apoptosis-Related Cysteine Peptidase; Caspase 6, Apoptosis-Related Cysteine Protease; Mammalian Ced-3 Homologue; EC 3.4.22.59; Apoptotic Protease MCH-2; Apoptotic Protease Mch-2; CASPASE-6; EC 3.4.22; CASP-6

Background

Gene Name: CASP6

NCBI Gene Entry: [839](#)

UniProt Entry: [P55212](#)

Application Information

Molecular Weight: Predicted, 33 kDa; observed, 34 kDa

Clonality: Rabbit monoclonal antibody

Clone ID: 24GB10155

Species Reactivity: Human

Applications Tested: Western blotting (WB), flow cytometry (FCM), immunocytochemistry (IC)

Immunogen

A synthesized peptide derived from human Caspase-6

Isotype

Rabbit IgG

Storage Buffer

Supplied in PBS (pH 7.4) containing 50% glycerol, and 0.02% sodium azide.

Storage

Store at -20 °C for one year.

Recommended Dilutions

Western Blotting (WB): 1:1,000-1:5,000

Flow Cytometry (FCM): 1:2,000

Immunocytochemistry (IC): 1:100-1:1,000

Note: This product is for research use only.

SUPPORT

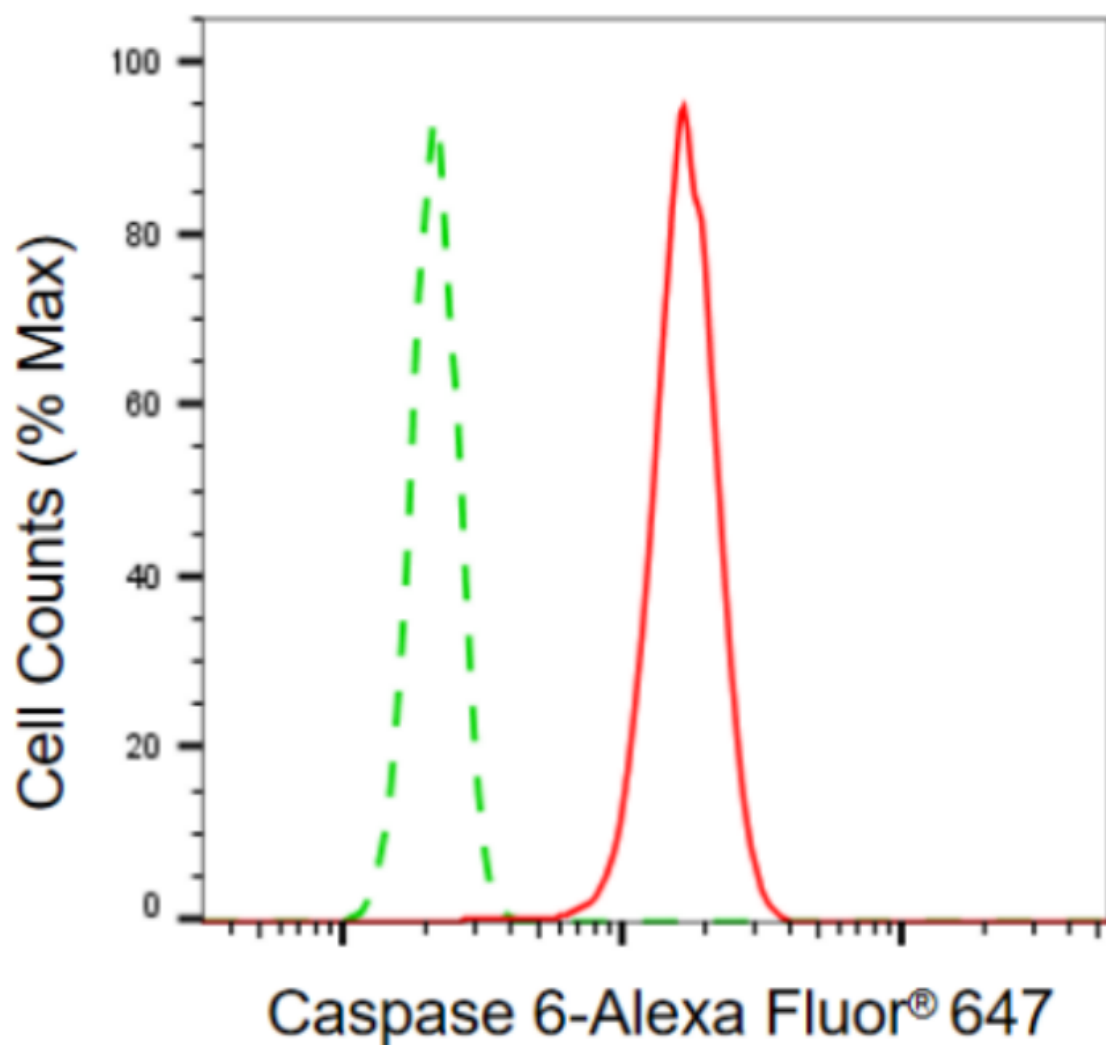
SUPPORT@GENUINBIOTECH.COM
TEL: +1-540-855-7041

ORDERS

SALES@GENUINBIOTECH.COM
FAX: +1-540-855-7041

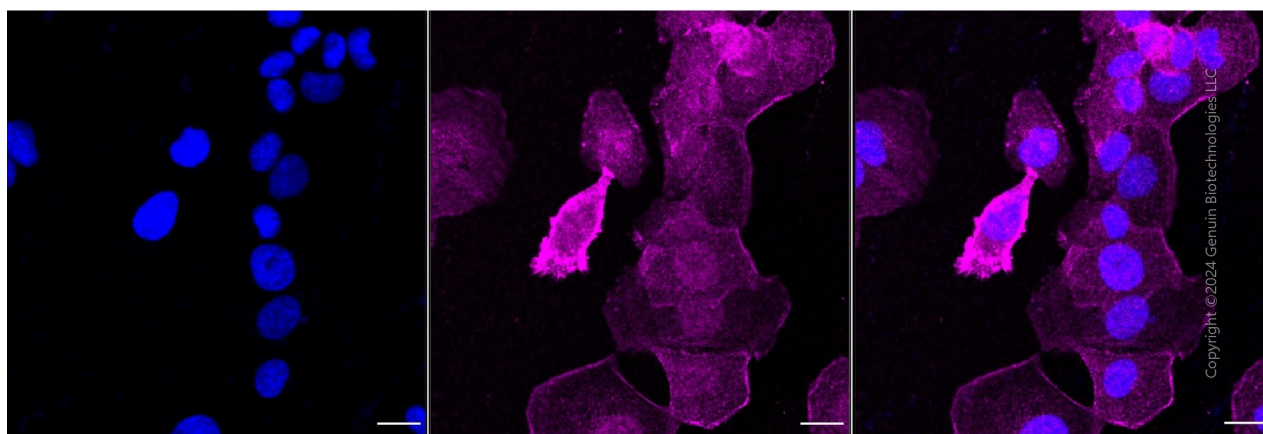
WWW.GENUINBIOTECH.COM

Validation Data



Copyright ©2024 Genuin Biotechnologies LLC

Flow cytometric analysis of caspase 6 expression in HT-1080 cells using anti-caspase 6 antibody (Cat#4224, 1:2,000). Green, isotype control; red, caspase 6.



Copyright ©2024 Genuin Biotechnologies LLC

SUPPORT

SUPPORT@GENUINBIOTECH.COM
TEL: +1-540-855-7041

ORDERS

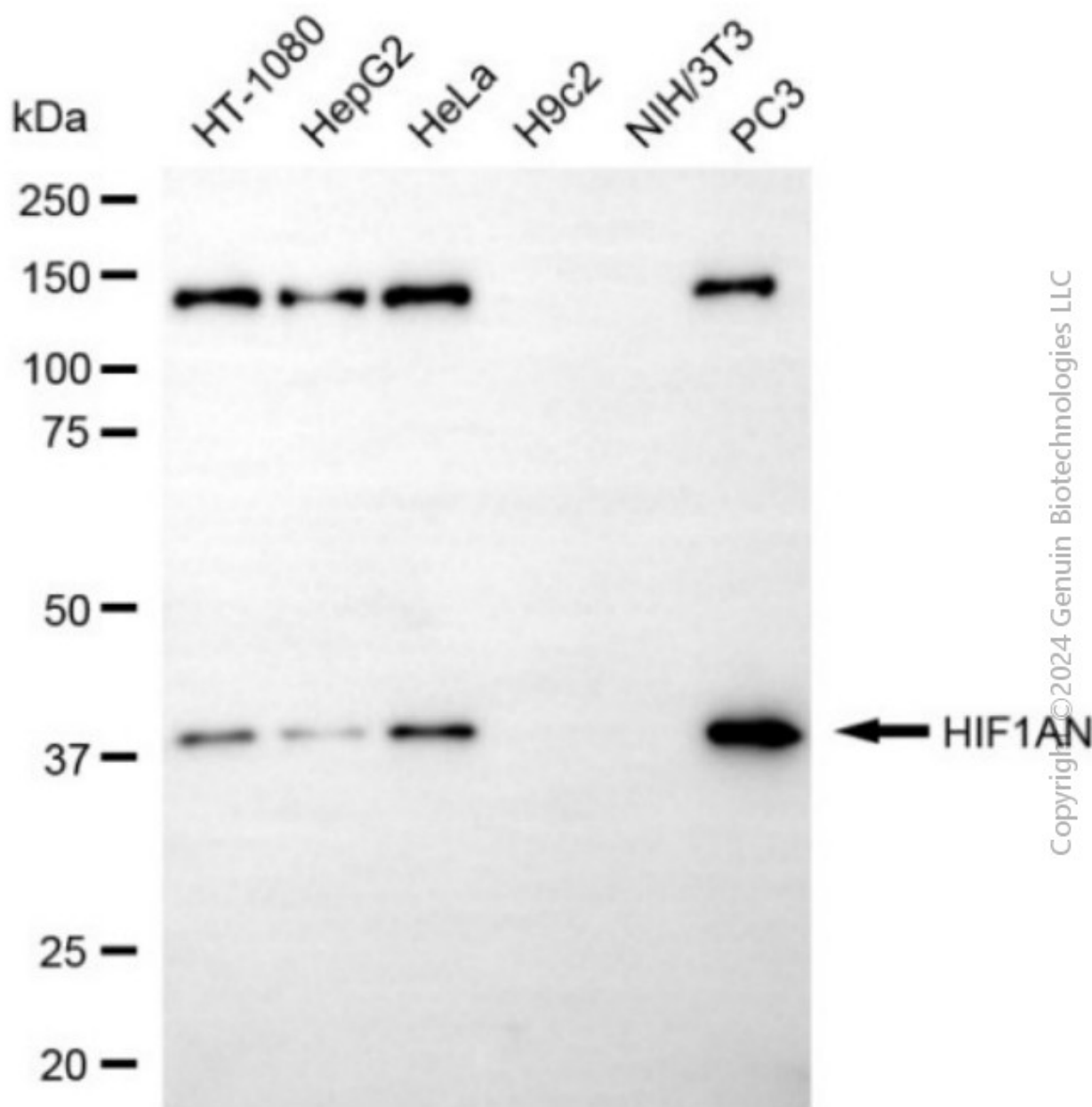
SALES@GENUINBIOTECH.COM
FAX: +1-540-855-7041

WWW.GENUINBIOTECH.COM

Anti-Caspase 6 Recombinant Rabbit Monoclonal Antibody

PAGE 3

Immunocytochemical staining of HT-1080 cells with anti-Caspase 6 antibody (Cat#4224, 1:1,000). Nuclei were stained blue with DAPI; Caspase 6 was stained magenta with Alexa Fluor® 647. Images were taken using Leica stellaris 5. Protein abundance based on laser Intensity and smart gain: Medium. Scale bar, 20 μ m.



Western blotting analysis using anti-caspase 6 antibody (Cat#4224). Total cell lysates (30 μ g) from various cell lines were loaded and separated by SDS-PAGE. The blot was incubated with anti-caspase 6 antibody (Cat#4224, 1:5,000) and HRP-conjugated goat anti-rabbit secondary antibody (Cat#201, 1:20,000) respectively. Image was developed using NaQ™ ECL Substrate Kit (Cat#716).

SUPPORT

SUPPORT@GENUINBIOTECH.COM
TEL: +1-540-855-7041

ORDERS

SALES@GENUINBIOTECH.COM
FAX: +1-540-855-7041

WWW.GENUINBIOTECH.COM