

Anti-Phospho-AMPK alpha 1 (S496) Recombinant Rabbit Monoclonal Antibody



Catalog #: 4235

Aliases

PRKAA1; Protein Kinase AMP-Activated Catalytic Subunit Alpha 1; 5'-AMP-Activated Protein Kinase Catalytic Subunit Alpha-1; Protein Kinase, AMP-Activated, Alpha 1 Catalytic Subunit; Hydroxymethylglutaryl-CoA Reductase Kinase; Acetyl-CoA Carboxylase Kinase; Tau-Protein Kinase PRKAA1; AMPK Subunit Alpha-1; AMPK, Alpha, 1; ACACA Kinase; HMGCR Kinase; EC 2.7.11.1; AMPKa1; 5'-AMP-Activated Protein Kinase, Catalytic Alpha-1 Chain; AMP-Activated Protein Kinase, Catalytic, Alpha-1; AMP -Activate Kinase Alpha 1 Subunit; AMPK Alpha 1; EC 2.7.11.27; EC 2.7.11.31; EC 2.7.11.26; EC 2.7.11; AMPKA1; AMPK1; AMPK

Background

Gene Name: PRKAA1

NCBI Gene Entry: [5562](#)

UniProt Entry: [Q13131](#)

Application Information

Molecular Weight: Predicted, 64 kDa; observed, 64 kDa

Clonality: Rabbit monoclonal antibody

Clone ID: 24GB10210

Species Reactivity: Human

Applications Tested: Western blotting (WB), flow cytometry (FCM), immunocytochemistry (IC)

Immunogen

A synthesized peptide derived from human AMPK alpha 1

Isotype

Rabbit IgG

Storage Buffer

Supplied in PBS (pH 7.4) containing 50% glycerol, and 0.02% sodium azide.

Storage

Store at -20 °C for one year.

Recommended Dilutions

Western Blotting (WB): 1:1,000-1:5,000

Flow Cytometry (FCM): 1:2,000

SUPPORT

SUPPORT@GENUINBIOTECH.COM
TEL: +1-540-855-7041

ORDERS

SALES@GENUINBIOTECH.COM
FAX: +1-540-855-7041

WWW.GENUINBIOTECH.COM

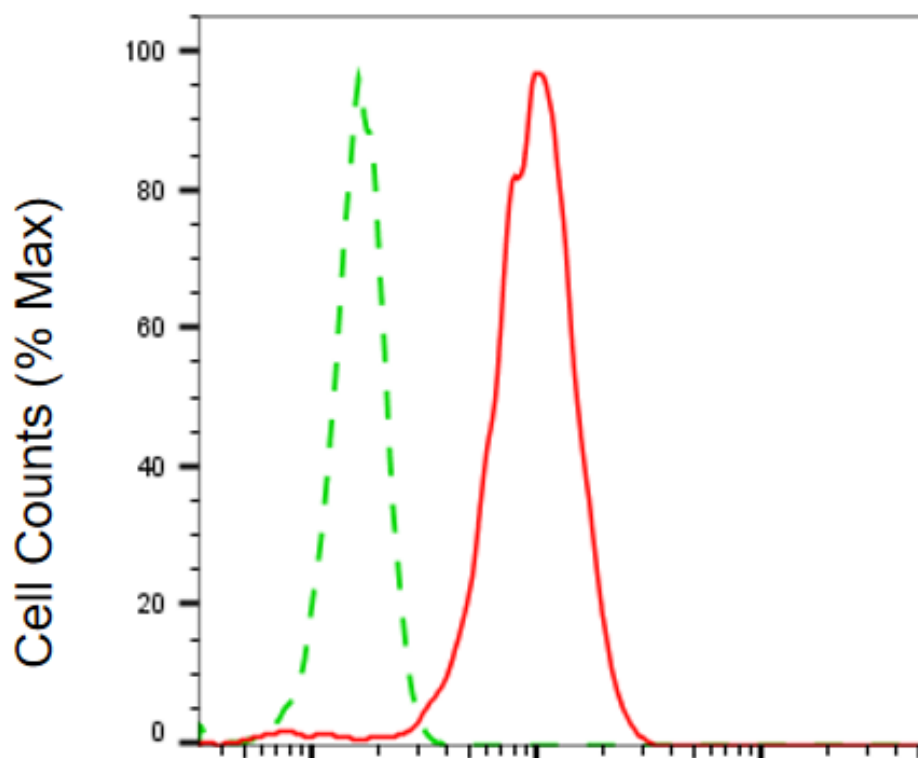
Anti-Phospho-AMPK alpha 1 (S496) Recombinant Rabbit Monoclonal Antibody

PAGE 2

Immunocytochemistry (IC): 1:100-1:1,000

Note: This product is for research use only.

Validation Data



Copyright ©2025 Genuin Biotechnologies LLC

Phospho-AMPK alpha 1 (S496)-Alexa Fluor® 647

Flow cytometric analysis of Phospho-AMPK alpha 1 (S496) expression in HeLa cells using anti-Phospho-AMPK alpha 1 (S496) antibody (Cat#4235, 1:2,000). Green, isotype control; red, Phospho-AMPK alpha 1 (S496).

SUPPORT

SUPPORT@GENUINBIOTECH.COM
TEL: +1-540-855-7041

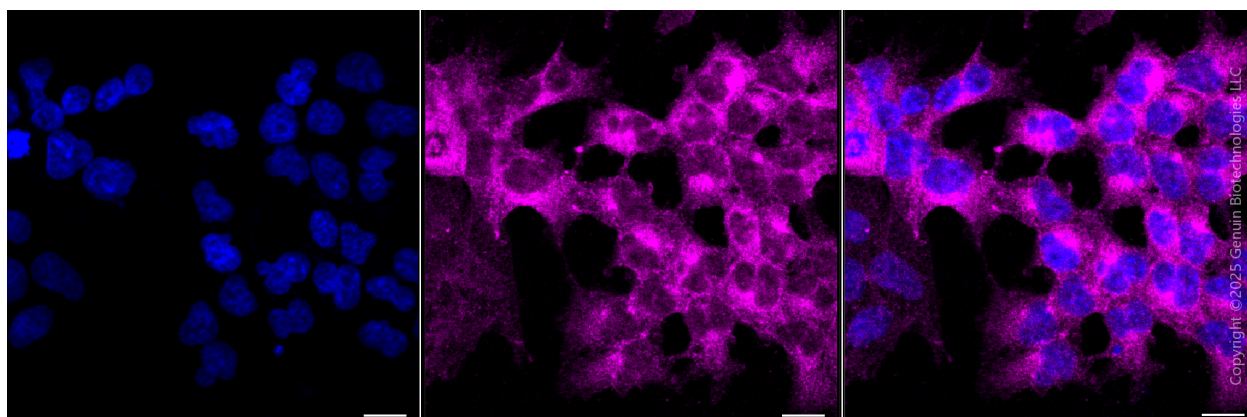
ORDERS

SALES@GENUINBIOTECH.COM
FAX: +1-540-855-7041

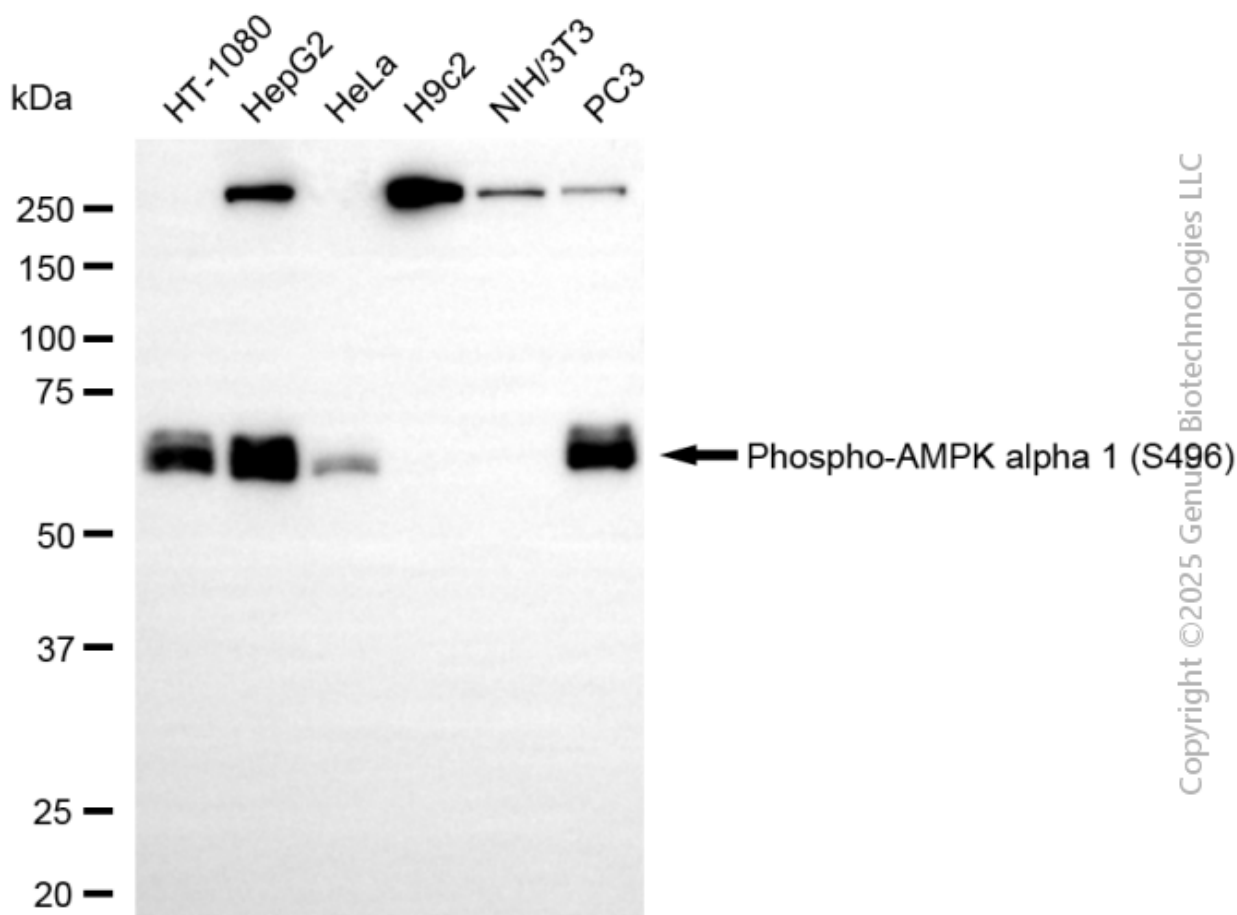
WWW.GENUINBIOTECH.COM

Anti-Phospho-AMPK alpha 1 (S496) Recombinant Rabbit Monoclonal Antibody

PAGE 3



Immunocytochemical staining of HeLa cells with anti-PRKAA1 antibody (Cat#4235, 1:1,000). Nuclei were stained blue with DAPI; PRKAA1 was stained magenta with Alexa Fluor® 647. Images were taken using Leica stellaris 5. Protein abundance based on laser Intensity and smart gain: Medium. Scale bar, 20 μ m.



Western blotting analysis using anti-phospho-AMPK alpha 1 (S496) antibody (Cat#4235). Total cell lysates (30 μ g) from various cell lines were loaded and separated by SDS-PAGE. The blot was

SUPPORT

SUPPORT@GENUINBIOTECH.COM
TEL: +1-540-855-7041

ORDERS

SALES@GENUINBIOTECH.COM
FAX: +1-540-855-7041

WWW.GENUINBIOTECH.COM

Anti-Phospho-AMPK alpha 1 (S496) Recombinant Rabbit Monoclonal Antibody

PAGE 4

incubated with anti-phospho-AMPK alpha 1 (S496) antibody (Cat#4235, 1:5,000) and HRP-conjugated goat anti-rabbit secondary antibody (Cat#201, 1:20,000) respectively. Image was developed using NaQ™ ECL Substrate Kit (Cat#716).

SUPPORT

SUPPORT@GENUINBIOTECH.COM
TEL: +1-540-855-7041

ORDERS

SALES@GENUINBIOTECH.COM
FAX: +1-540-855-7041

WWW.GENUINBIOTECH.COM