

Anti-Stromal interaction molecule 1 Recombinant Rabbit Monoclonal Antibody



Catalog #: 4236

Aliases

STIM1; Stromal Interaction Molecule 1; GOK; D11S4896E; IMD10; STRMK; TAM1; TAM

Background

Gene Name: STIM1

NCBI Gene Entry: [6786](#)

UniProt Entry: [Q13586](#)

Application Information

Molecular Weight: Predicted, 77 kDa; observed, 77 kDa

Clonality: Rabbit monoclonal antibody

Clone ID: 24GB10215

Species Reactivity: Human, mouse, rat

Applications Tested: Western blotting (WB), flow cytometry (FCM), immunocytochemistry (IC)

Immunogen

A synthesized peptide derived from human Stromal interaction molecule 1

Isotype

Rabbit IgG

Storage Buffer

Supplied in PBS (pH 7.4) containing 50% glycerol, and 0.02% sodium azide.

Storage

Store at -20 °C for one year.

Recommended Dilutions

Western Blotting (WB): 1:1,000-1:5,000

Flow Cytometry (FCM): 1:2,000

Immunocytochemistry (IC): 1:100-1:1,000

Note: This product is for research use only.

Validation Data

SUPPORT

SUPPORT@GENUINBIOTECH.COM
TEL: +1-540-855-7041

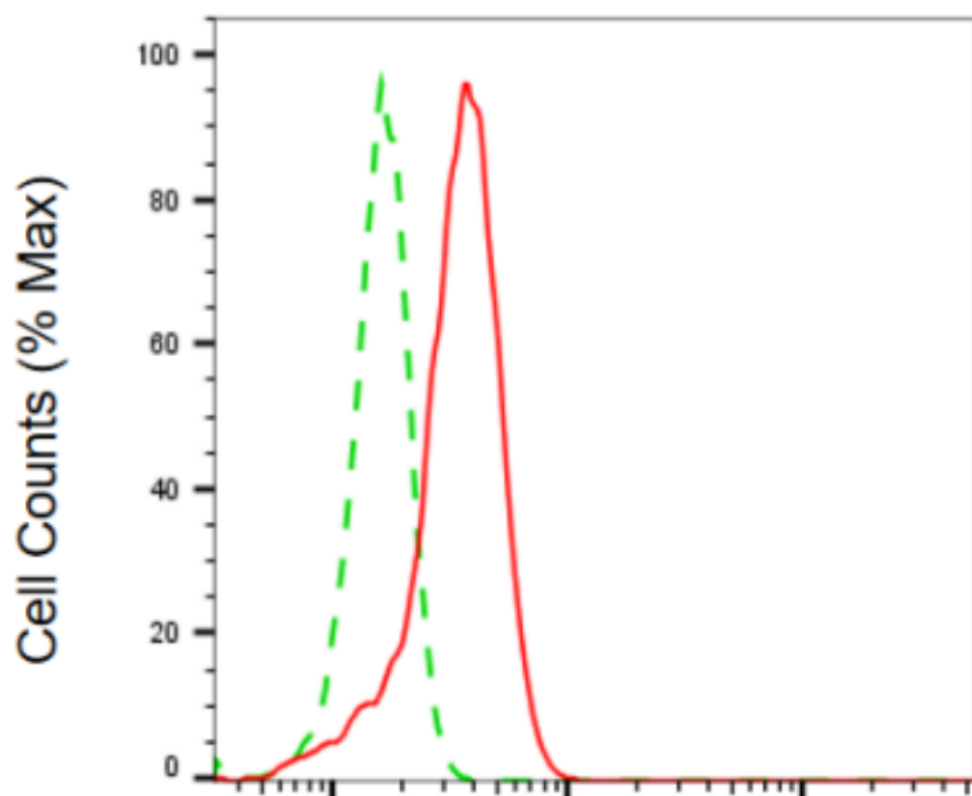
ORDERS

SALES@GENUINBIOTECH.COM
FAX: +1-540-855-7041

WWW.GENUINBIOTECH.COM

Anti-Stromal interaction molecule 1 Recombinant Rabbit Monoclonal Antibody

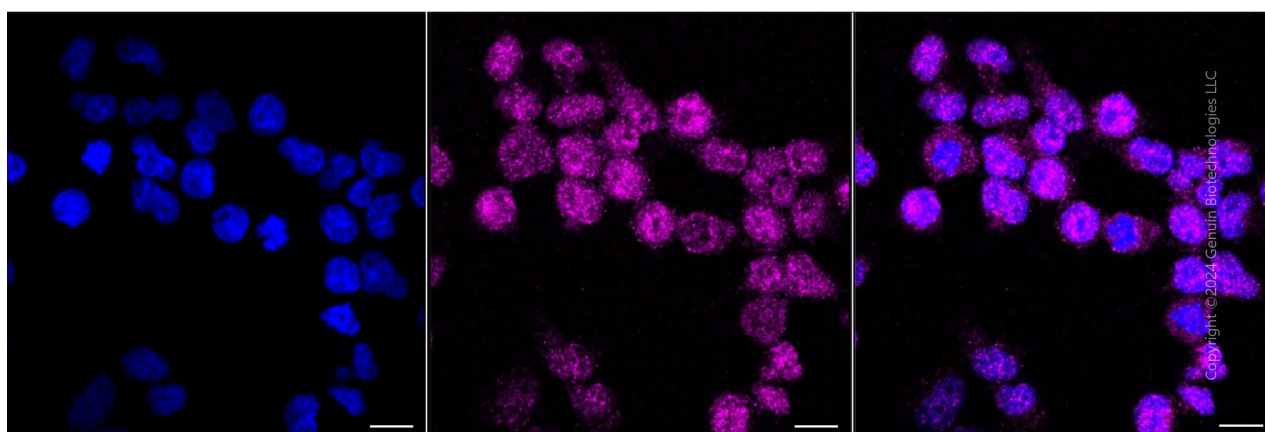
PAGE 2



Copyright ©2024 Genuin Biotechnologies LLC

Stromal interaction molecule 1-Alexa Fluor® 647

Flow cytometric analysis of stromal interaction molecule 1 expression in HeLa cells using anti-stromal interaction molecule 1 antibody (Cat#4236, 1:2,000). Green, isotype control; red, stromal interaction molecule 1.



Copyright ©2024 Genuin Biotechnologies LLC

Immunocytochemical staining of HeLa cells with anti-STIM1 antibody (Cat#4236, 1:1,000). Nuclei were stained blue with DAPI; STIM1 was stained magenta with Alexa Fluor® 647. Images were taken using Leica stellaris 5. Protein abundance based on laser Intensity and smart gain: Medium. Scale bar, 20 µm.

SUPPORT

SUPPORT@GENUINBIOTECH.COM
TEL: +1-540-855-7041

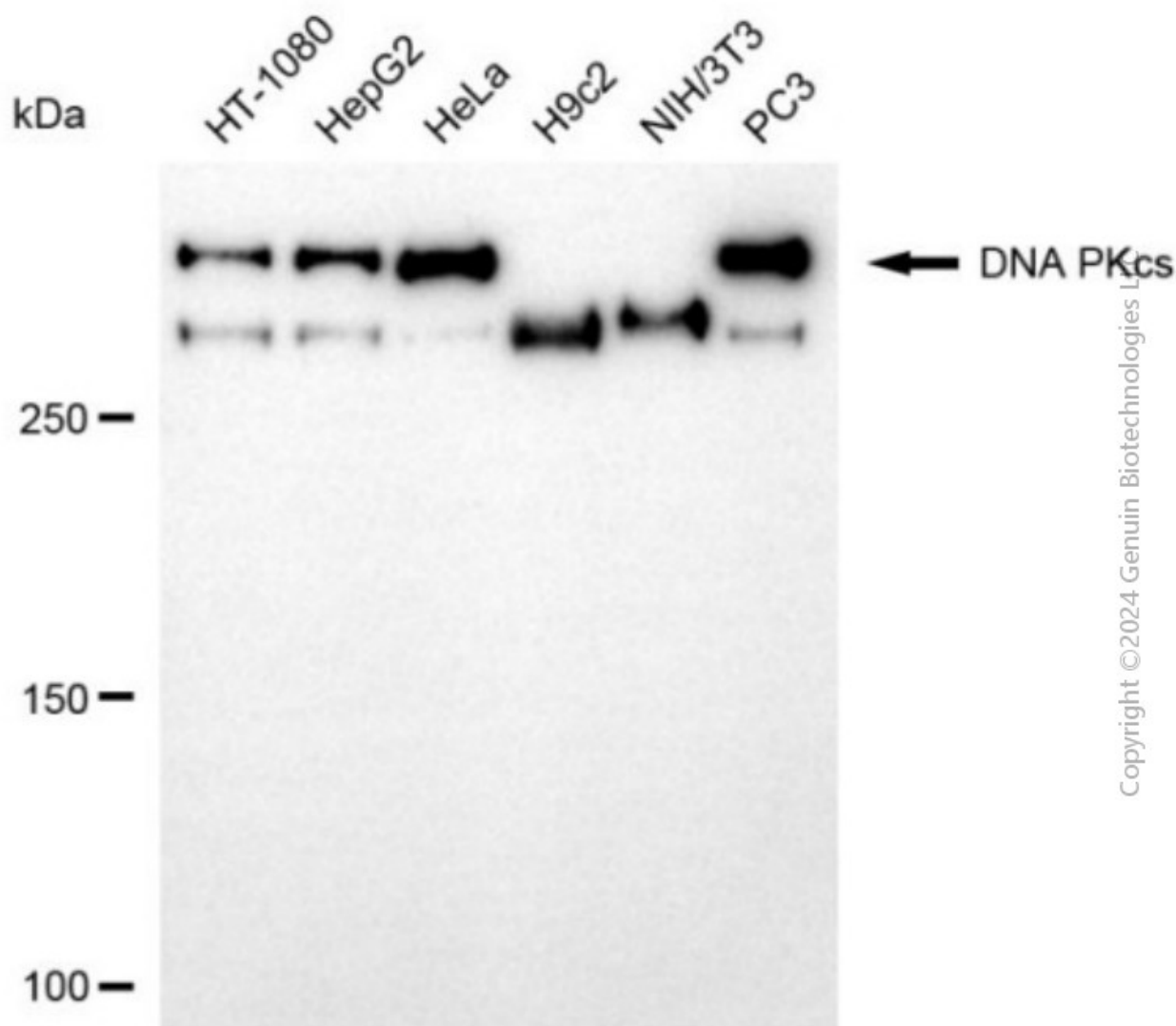
ORDERS

SALES@GENUINBIOTECH.COM
FAX: +1-540-855-7041

WWW.GENUINBIOTECH.COM

Anti-Stromal interaction molecule 1 Recombinant Rabbit Monoclonal Antibody

PAGE 3



Copyright ©2024 Genuin Biotechnologies Ltd

Western blotting analysis using anti-stromal interaction molecule 1 antibody (Cat#4236). Total cell lysates (30 µg) from various cell lines were loaded and separated by SDS-PAGE. The blot was incubated with anti-stromal interaction molecule 1 antibody (Cat#4236, 1:5,000) and HRP-conjugated goat anti-rabbit secondary antibody (Cat#201, 1:20,000) respectively. Image was developed using NaQ™ ECL Substrate Kit (Cat#716).

SUPPORT

SUPPORT@GENUINBIOTECH.COM
TEL: +1-540-855-7041

ORDERS

SALES@GENUINBIOTECH.COM
FAX: +1-540-855-7041

WWW.GENUINBIOTECH.COM