

# Anti-Histone deacetylase 6 Recombinant Rabbit Monoclonal Antibody



**Catalog #: 4237**

## Aliases

HDAC6; Histone Deacetylase 6; HD6; KIAA0901; PPP1R90; JM21; Protein Phosphatase 1, Regulatory Subunit 90; Tubulin-Lysine Deacetylase HDAC6; Alpha-Tubulin Deacetylase HDAC6; EC 3.5.1.98; FLJ16239; EC 3.5.1.-; CPBHM; KDAC6

## Background

Gene Name: HDAC6

NCBI Gene Entry: [10013](#)

UniProt Entry: [Q9UBN7](#)

## Application Information

Molecular Weight: Predicted, 131 kDa; observed, 160 kDa

Clonality: Rabbit monoclonal antibody

Clone ID: 24GB10220

Species Reactivity: Human

Applications Tested: Western blotting (WB), flow cytometry (FCM), immunocytochemistry (IC)

## Immunogen

A synthesized peptide derived from human HDAC6

## Isotype

Rabbit IgG

## Storage Buffer

Supplied in PBS (pH 7.4) containing 50% glycerol, and 0.02% sodium azide.

## Storage

Store at -20 °C for one year.

## Recommended Dilutions

Western Blotting (WB): 1:4,000-1:20,000

Flow Cytometry (FCM): 1:2,000

Immunocytochemistry (IC): 1:100-1:1,000

**Note:** This product is for research use only.

---

### SUPPORT

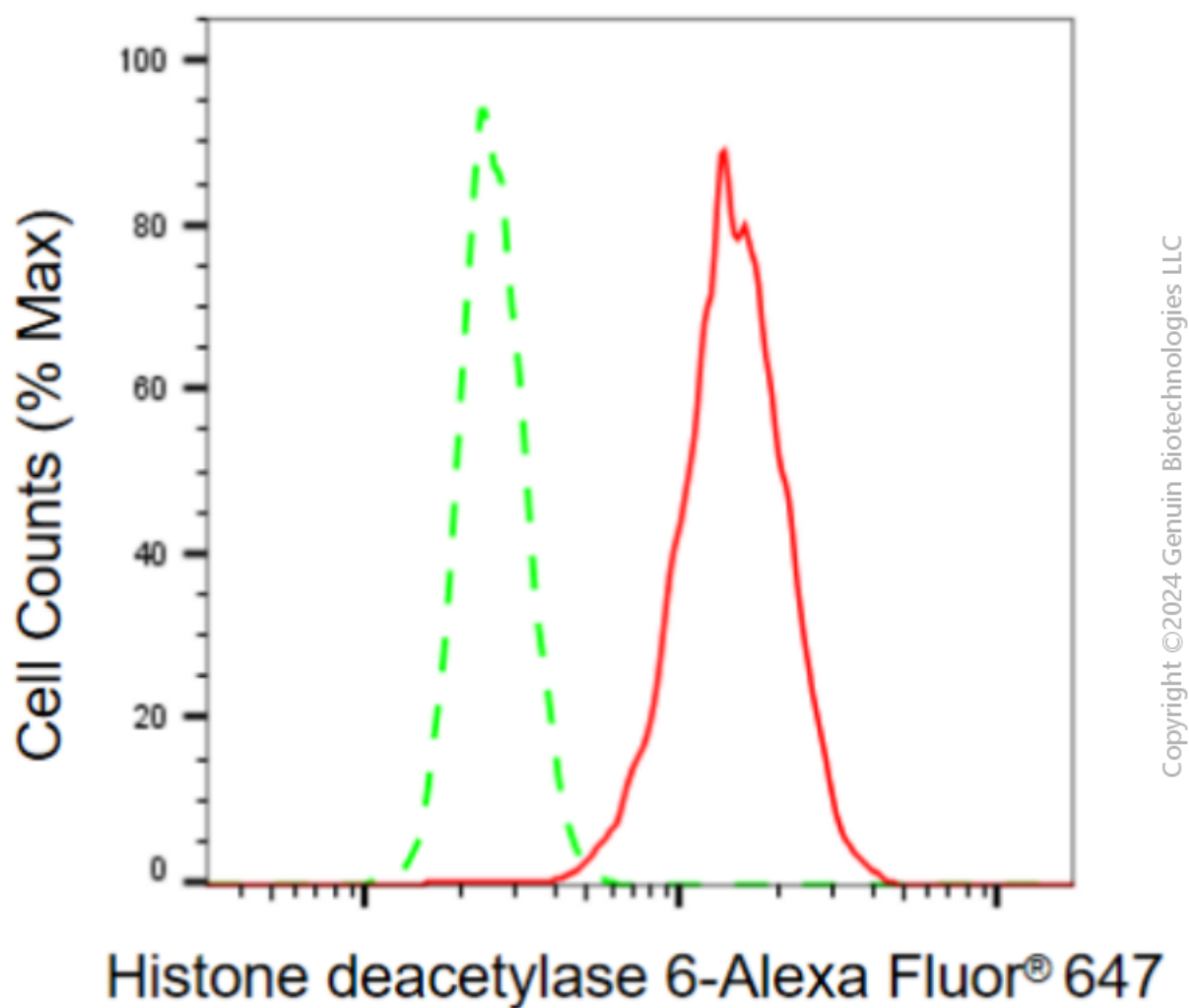
SUPPORT@GENUINBIOTECH.COM  
TEL: +1-540-855-7041

### ORDERS

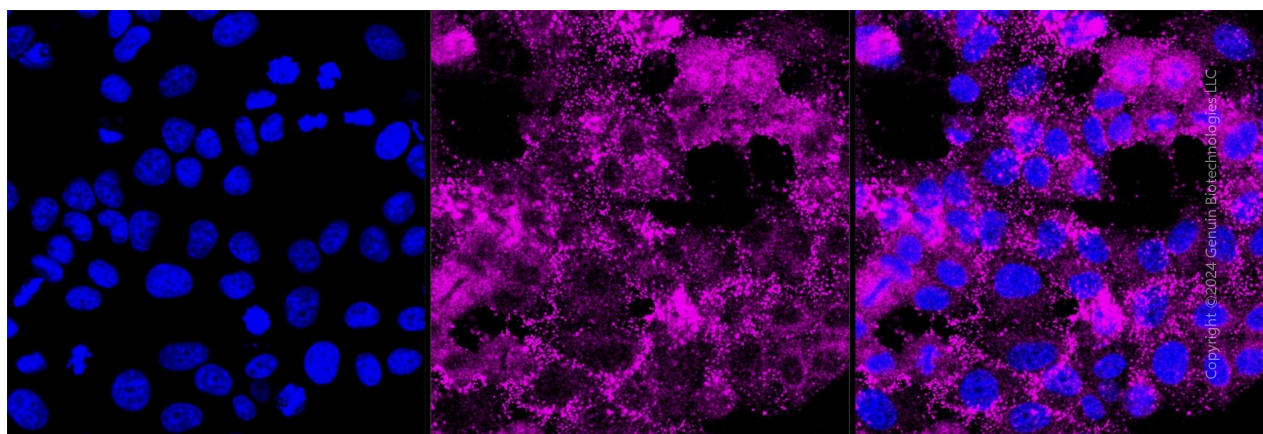
SALES@GENUINBIOTECH.COM  
FAX: +1-540-855-7041

[WWW.GENUINBIOTECH.COM](http://WWW.GENUINBIOTECH.COM)

**Validation Data**



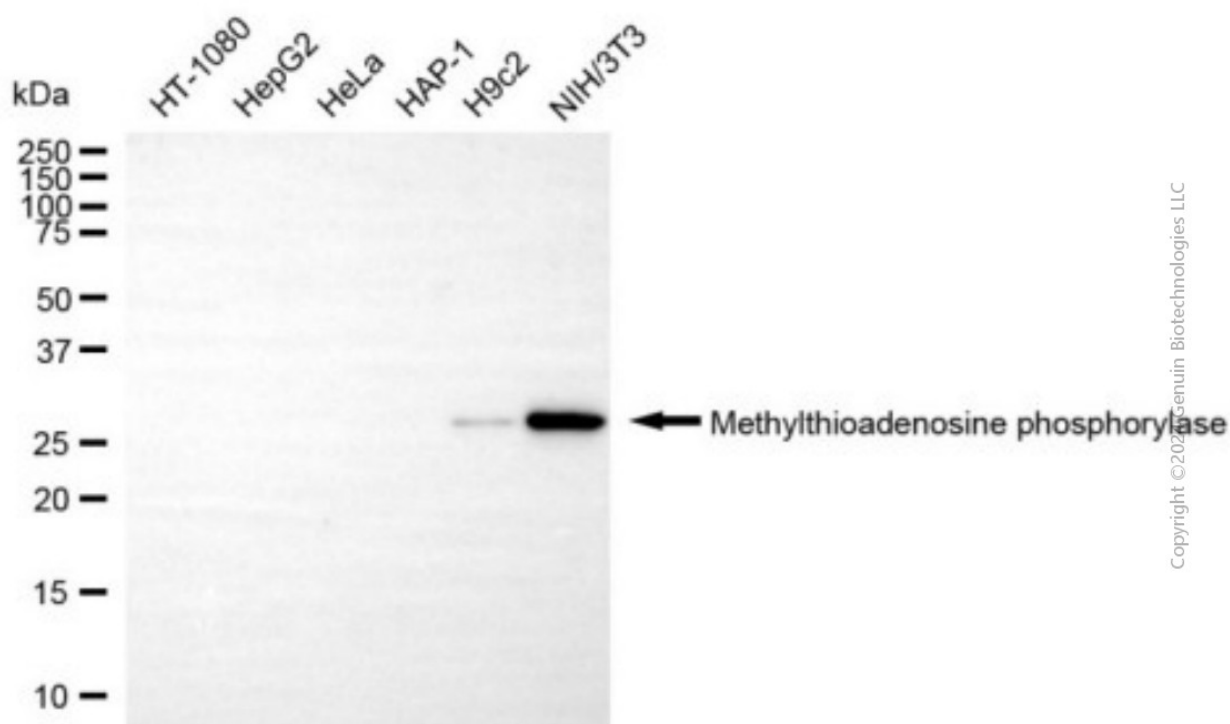
Flow cytometric analysis of histone deacetylase 6 expression in HepG2 cells using anti-histone deacetylase 6 antibody (Cat#4237, 1:2,000). Green, isotype control; red, histone deacetylase 6.



## Anti-Histone deacetylase 6 Recombinant Rabbit Monoclonal Antibody

PAGE 3

Immunocytochemical staining of HepG2 cells with anti-Histone deacetylase 6 antibody (Cat#4237, 1:1,000). Nuclei were stained blue with anti-DAPI; Histone deacetylase 6 was stained magenta with Alexa Fluor® 647. Images were taken using Leica stellaris 5. Protein abundance based on laser Intensity and smart gain: Medium. Scale bar, 20 µm.



Western blotting analysis using anti-histone deacetylase 6 antibody (Cat#4237). Total cell lysates (30 µg) from various cell lines were loaded and separated by SDS-PAGE. The blot was incubated with anti-histone deacetylase 6 antibody (Cat#4237, 1:20,000) and HRP-conjugated goat anti-rabbit secondary antibody (Cat#201, 1:20,000) respectively. Image was developed using NaQ™ ECL Substrate Kit (Cat#716).

### SUPPORT

SUPPORT@GENUINBIOTECH.COM  
TEL: +1-540-855-7041

### ORDERS

SALES@GENUINBIOTECH.COM  
FAX: +1-540-855-7041

WWW.GENUINBIOTECH.COM