

# Anti-TRK fused gene Recombinant Rabbit Monoclonal Antibody



**Catalog #: 4243**

## Aliases

TFG; Trafficking From ER To Golgi Regulator; SPG57; TF6; TRK-Fused Gene Protein; Protein TFG; FLJ36137; TRK-Fused Gene; TRKT3 Oncogene; TRK-Fused;HMSNP; TRKT3

## Background

Gene Name: TFG

NCBI Gene Entry: [10342](#)

UniProt Entry: [Q92734](#)

## Application Information

Molecular Weight: Predicted, 43 kDa; observed, 55 kDa

Clonality: Rabbit monoclonal antibody

Clone ID: 24GB10245

Species Reactivity: Human, mouse, rat

Applications Tested: Western blotting (WB), flow cytometry (FCM), immunocytochemistry (IC)

## Immunogen

A synthesized peptide derived from human TRK fused gene

## Isotype

Rabbit IgG

## Storage Buffer

Supplied in PBS (pH 7.4) containing 50% glycerol, and 0.02% sodium azide.

## Storage

Store at -20 °C for one year.

## Recommended Dilutions

Western Blotting (WB): 1:4,000-1:20,000

Flow Cytometry (FCM): 1:2,000

Immunocytochemistry (IC): 1:100-1:1,000

**Note:** This product is for research use only.

## Validation Data

---

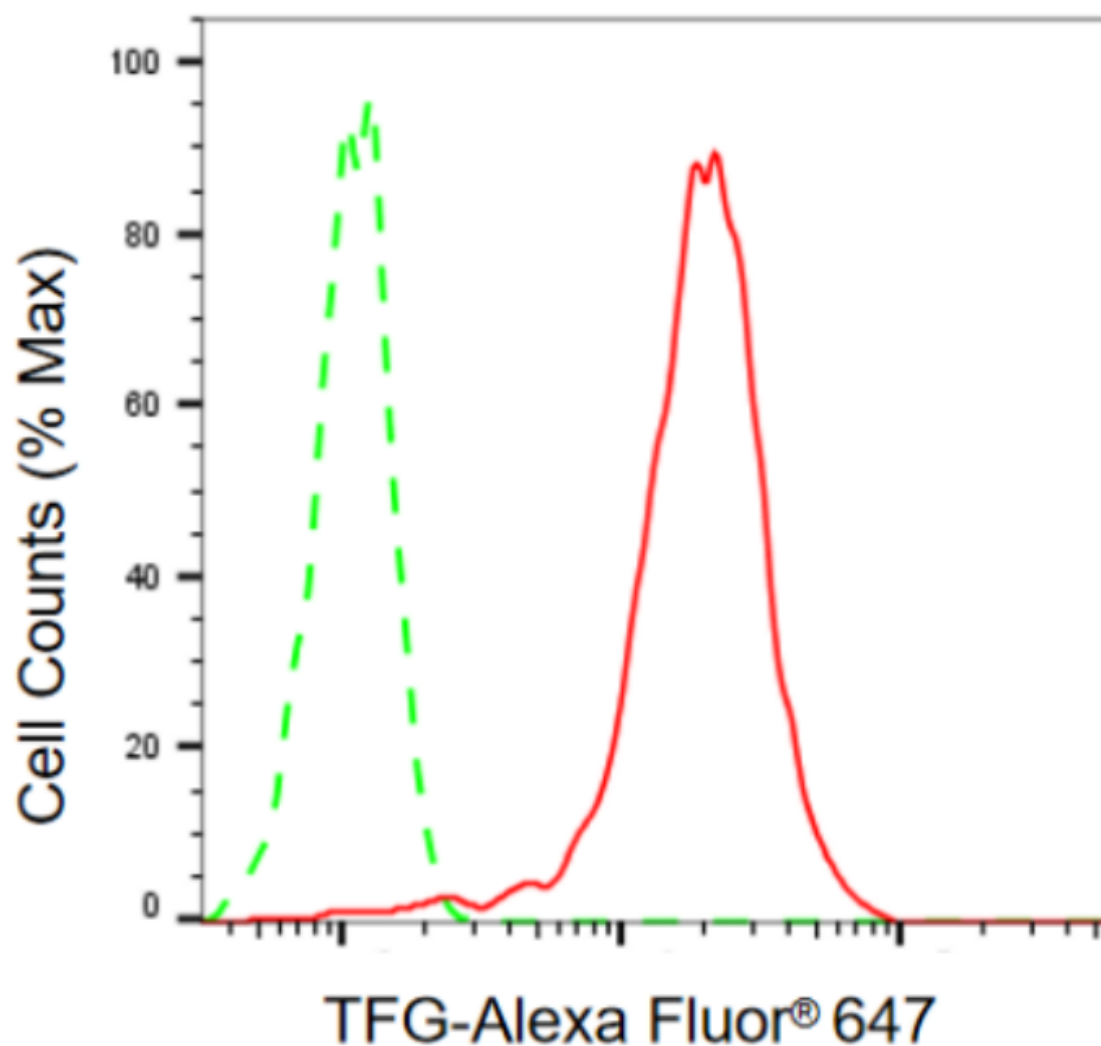
### SUPPORT

SUPPORT@GENUINBIOTECH.COM  
TEL: +1-540-855-7041

### ORDERS

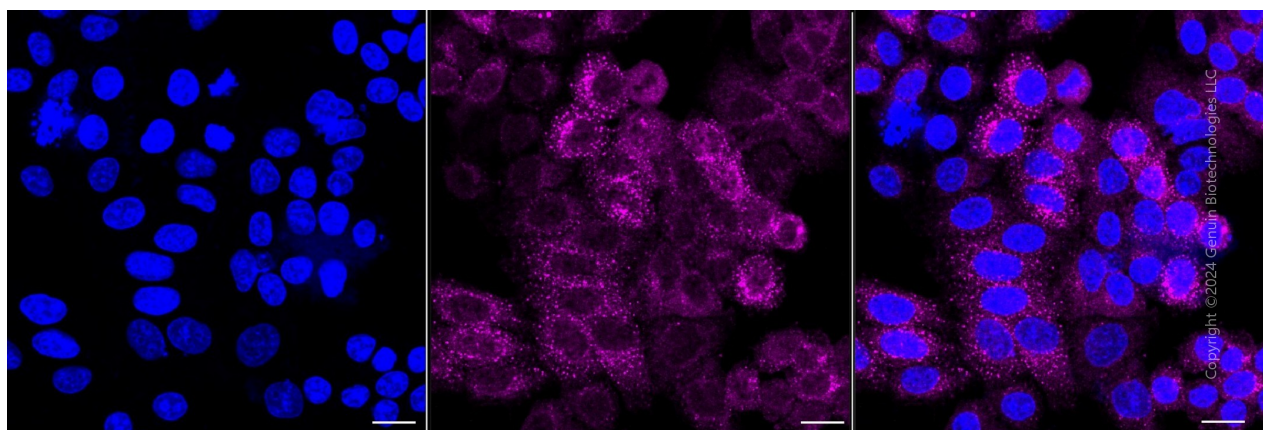
SALES@GENUINBIOTECH.COM  
FAX: +1-540-855-7041

[WWW.GENUINBIOTECH.COM](http://WWW.GENUINBIOTECH.COM)



Copyright ©2024 Genuin Biotechnologies LLC

Flow cytometric analysis of TFG expression in HepG2 cells using anti-TFG antibody (Cat#4243, 1:2,000). Green, isotype control; red, TFG.



Copyright ©2024 Genuin Biotechnologies LLC

Immunocytochemical staining of HepG2 cells with anti-TFG antibody (Cat#4243, 1:1,000).

**SUPPORT**

SUPPORT@GENUINBIOTECH.COM  
TEL: +1-540-855-7041

**ORDERS**

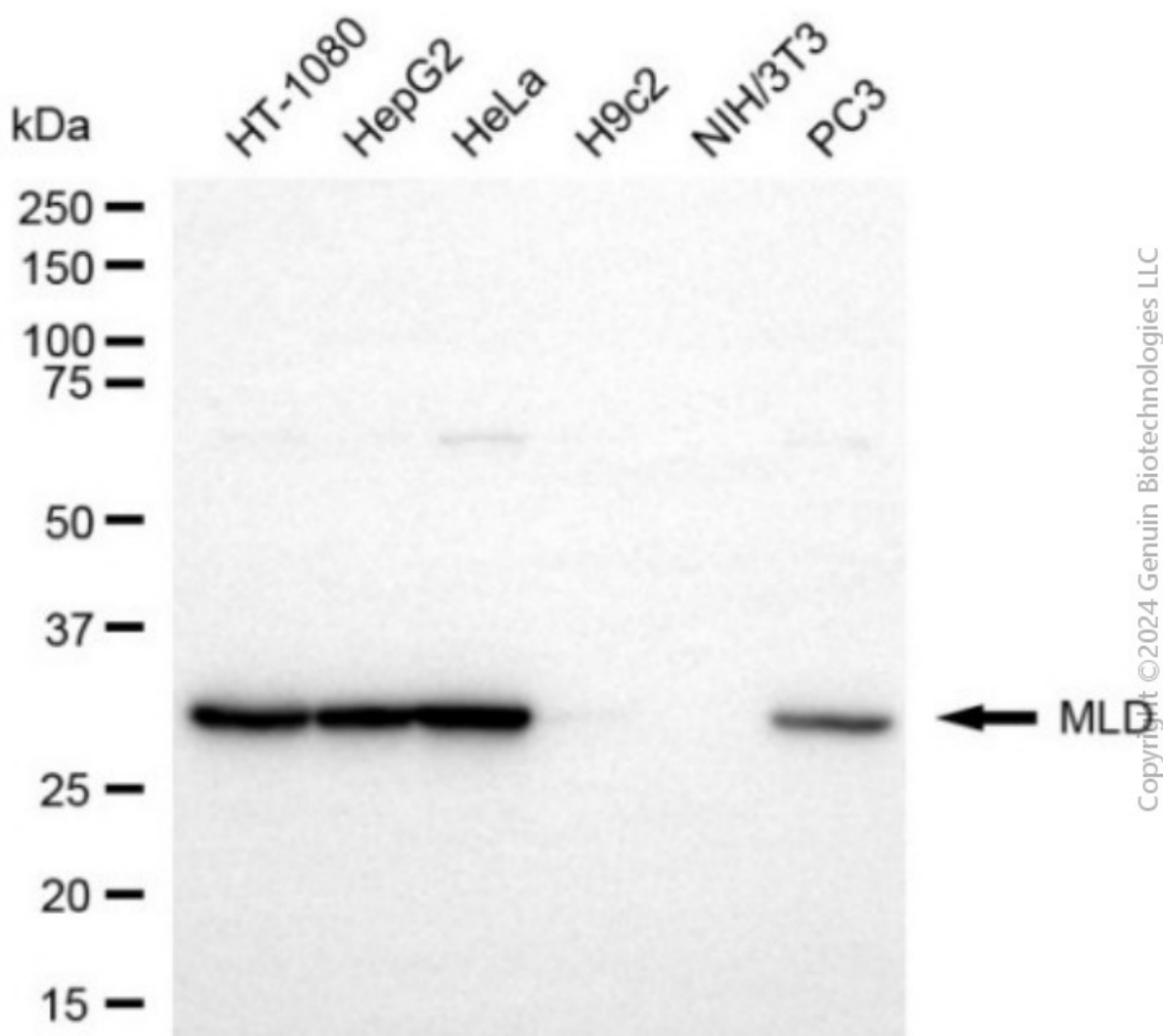
SALES@GENUINBIOTECH.COM  
FAX: +1-540-855-7041

**WWW.GENUINBIOTECH.COM**

## Anti-TRK fused gene Recombinant Rabbit Monoclonal Antibody

PAGE 3

Nuclei were stained blue with DAPI; TFG was stained magenta with Alexa Fluor® 647. Images were taken using Leica stellaris 5. Protein abundance based on laser Intensity and smart gain: Medium. Scale bar, 20 µm.



Western blotting analysis using anti-TFG antibody (Cat#4243). Total cell lysates (30 µg) from various cell lines were loaded and separated by SDS-PAGE. The blot was incubated with anti-TFG antibody (Cat#4243, 1:20,000) and HRP-conjugated goat anti-rabbit secondary antibody (Cat#201, 1:20,000) respectively. Image was developed using NaQ™ ECL Substrate Kit (Cat#716).

### SUPPORT

SUPPORT@GENUINBIOTECH.COM  
TEL: +1-540-855-7041

### ORDERS

SALES@GENUINBIOTECH.COM  
FAX: +1-540-855-7041

WWW.GENUINBIOTECH.COM