

# Anti-Phospho-JunD (S255) Recombinant Rabbit Monoclonal Antibody



**Catalog #: 4244**

## Aliases

JUND; JunD Proto-Oncogene, AP-1 Transcription Factor Subunit; AP-1; Transcription Factor AP-1 Subunit JunD; Transcription Factor Jun-D; Transcription Factor JunD; Activator Protein 1; Jun D Proto-Oncogene; JunD-FL Isoform

## Background

Gene Name: JUND

NCBI Gene Entry: [3727](#)

UniProt Entry: [P17535](#)

## Application Information

Molecular Weight: Predicted, 35 kDa; observed, 38,42 kDa

Clonality: Rabbit monoclonal antibody

Clone ID: 24GB10250

Species Reactivity: Human, mouse, rat

Applications Tested: Western blotting (WB), flow cytometry (FCM), immunocytochemistry (IC)

## Immunogen

A synthesized peptide derived from human JunD

## Isotype

Rabbit IgG

## Storage Buffer

Supplied in PBS (pH 7.4) containing 50% glycerol, and 0.02% sodium azide.

## Storage

Store at -20 °C for one year.

## Recommended Dilutions

Western Blotting (WB): 1:1,000-1:5,000

Flow Cytometry (FCM): 1:2,000

Immunocytochemistry (IC): 1:100-1:1,000

**Note:** This product is for research use only.

---

### SUPPORT

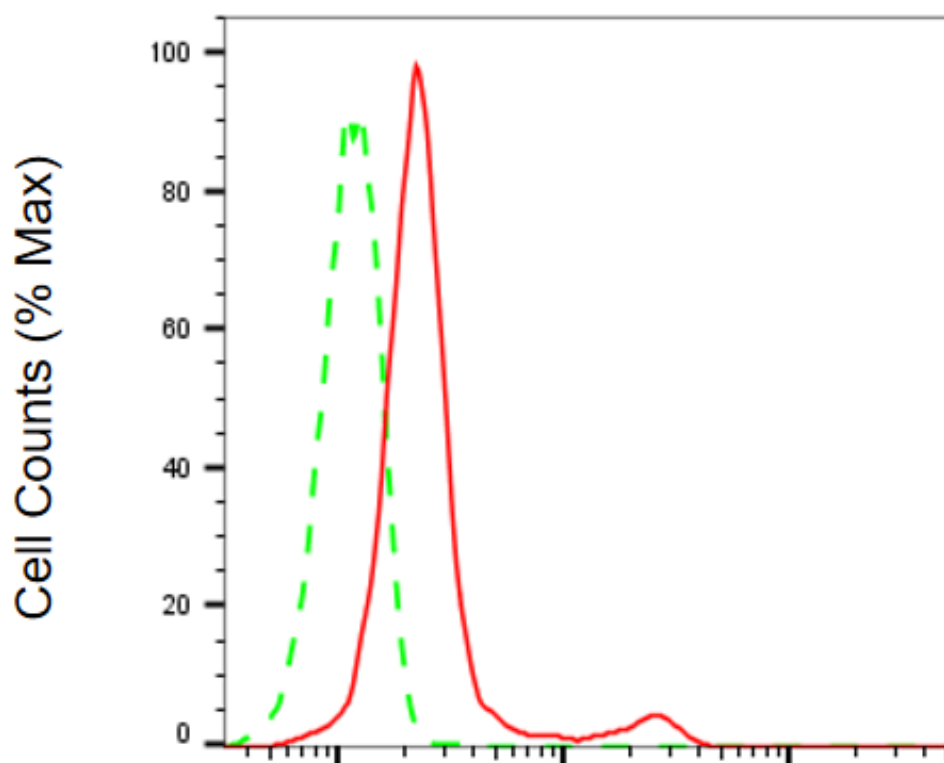
SUPPORT@GENUINBIOTECH.COM  
TEL: +1-540-855-7041

### ORDERS

SALES@GENUINBIOTECH.COM  
FAX: +1-540-855-7041

[WWW.GENUINBIOTECH.COM](http://WWW.GENUINBIOTECH.COM)

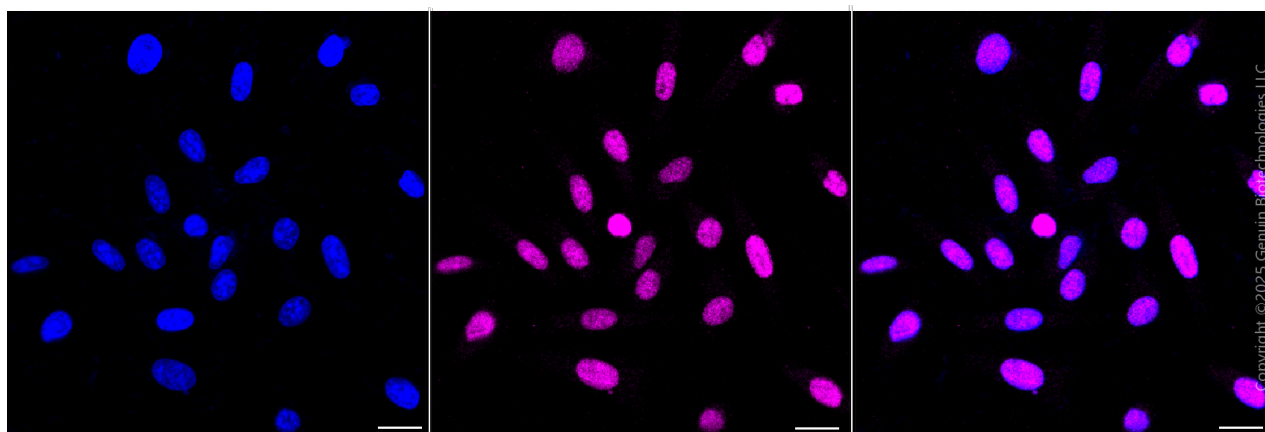
**Validation Data**



Copyright ©2025 Genuin Biotechnologies LLC

**Phospho-JunD (S255)-Alexa Fluor® 647**

Flow cytometric analysis of Phospho-JunD (S255) expression in HepG2 cells using anti-Phospho-JunD (S255) antibody (Cat#4244, 1:2,000). Green, isotype control; red, Phospho-JunD (S255).



Immunocytochemical staining of HepG2 cells with anti-Phospho-JunD (S255) antibody (Cat#4244, 1:1,000). Nuclei were stained blue with DAPI; Phospho-JunD (S255) was stained magenta with Alexa Fluor® 647. Images were taken using Leica stellaris 5. Protein abundance

**SUPPORT**

SUPPORT@GENUINBIOTECH.COM  
TEL: +1-540-855-7041

**ORDERS**

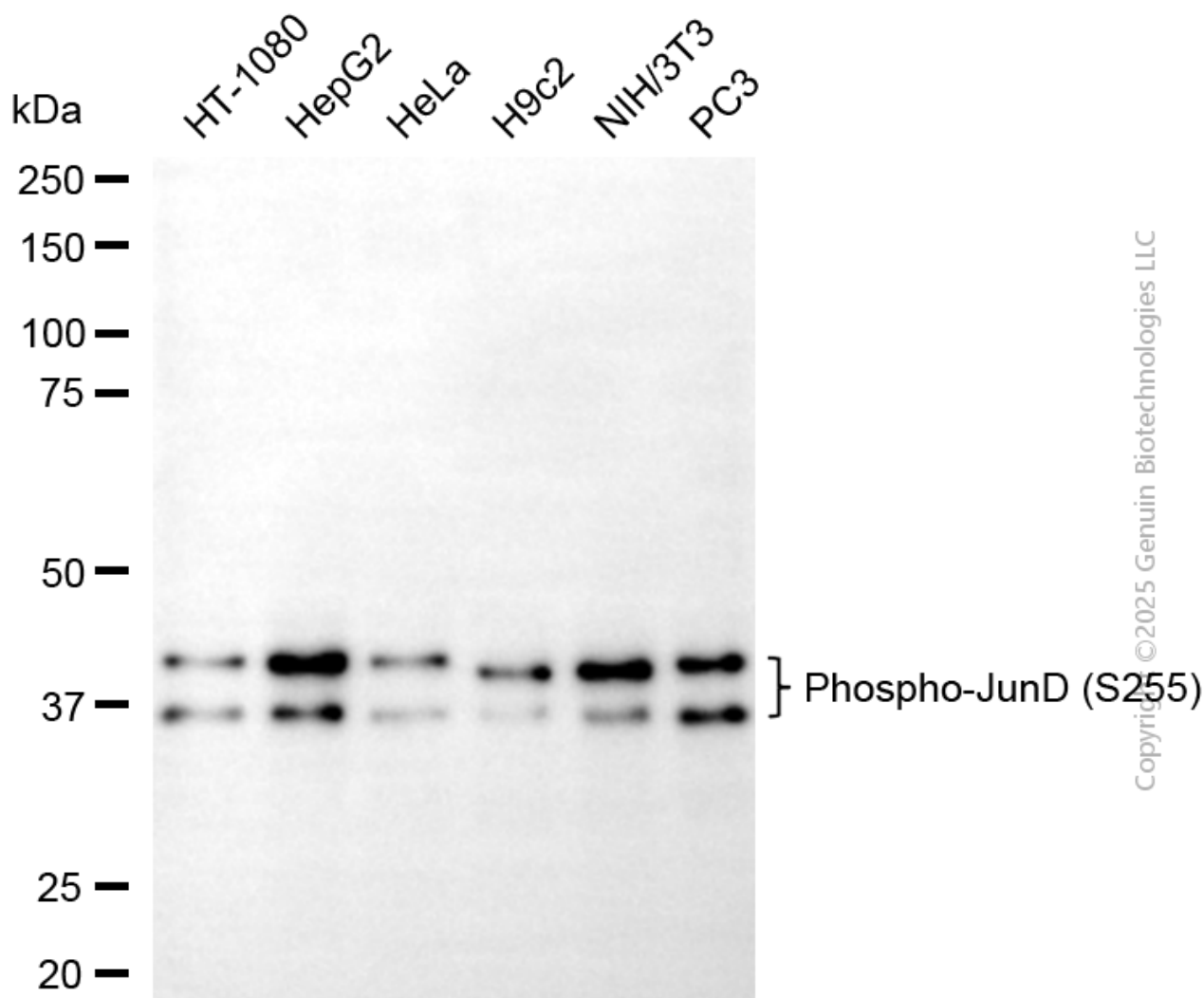
SALES@GENUINBIOTECH.COM  
FAX: +1-540-855-7041

**WWW.GENUINBIOTECH.COM**

## Anti-Phospho-JunD (S255) Recombinant Rabbit Monoclonal Antibody

PAGE 3

based on laser Intensity and smart gain: Medium. Scale bar, 20  $\mu$ m.



Western blotting analysis using anti-phospho-JunD (S255) antibody (Cat#4244). Total cell lysates (30  $\mu$ g) from various cell lines were loaded and separated by SDS-PAGE. The blot was incubated with anti-phospho-JunD (S255) antibody (Cat#4244, 1:5,000) and HRP-conjugated goat anti-rabbit secondary antibody (Cat#201, 1:20,000) respectively. Image was developed using NaQ<sup>TM</sup> ECL Substrate Kit (Cat#716).

### SUPPORT

SUPPORT@GENUINBIOTECH.COM  
TEL: +1-540-855-7041

### ORDERS

SALES@GENUINBIOTECH.COM  
FAX: +1-540-855-7041

WWW.GENUINBIOTECH.COM