

Anti-CDC25C Recombinant Rabbit Monoclonal Antibody



Catalog #: 4252

Aliases

CDC25C; Cell Division Cycle 25C; M-Phase Inducer Phosphatase 3; PPP1R60; Protein Phosphatase 1, Regulatory Subunit 60; EC 3.1.3.48; CDC25; Dual Specificity Phosphatase CDC25C; Dual Specificity Phosphatase Cdc25C; Phosphotyrosine Phosphatase; CDC25 Homolog C (S. Pombe); Mitosis Inducer CDC25; CDC25 Homolog C

Background

Gene Name: CDC25C

NCBI Gene Entry: [995](#)

UniProt Entry: [P30307](#)

Application Information

Molecular Weight: Predicted, 53 kDa; observed, 60 kDa

Clonality: Rabbit monoclonal antibody

Clone ID: 24GB10290

Species Reactivity: Human, mouse, rat

Applications Tested: Western blotting (WB), flow cytometry (FCM), immunocytochemistry (IC)

Immunogen

A synthesized peptide derived from human Cdc25C

Isotype

Rabbit IgG

Storage Buffer

Supplied in PBS (pH 7.4) containing 50% glycerol, and 0.02% sodium azide.

Storage

Store at -20 °C for one year.

Recommended Dilutions

Western Blotting (WB): 1:1,000-1:5,000

Flow Cytometry (FCM): 1:2,000

Immunocytochemistry (IC): 1:100-1:1,000

SUPPORT

SUPPORT@GENUINBIOTECH.COM
TEL: +1-540-855-7041

ORDERS

SALES@GENUINBIOTECH.COM
FAX: +1-540-855-7041

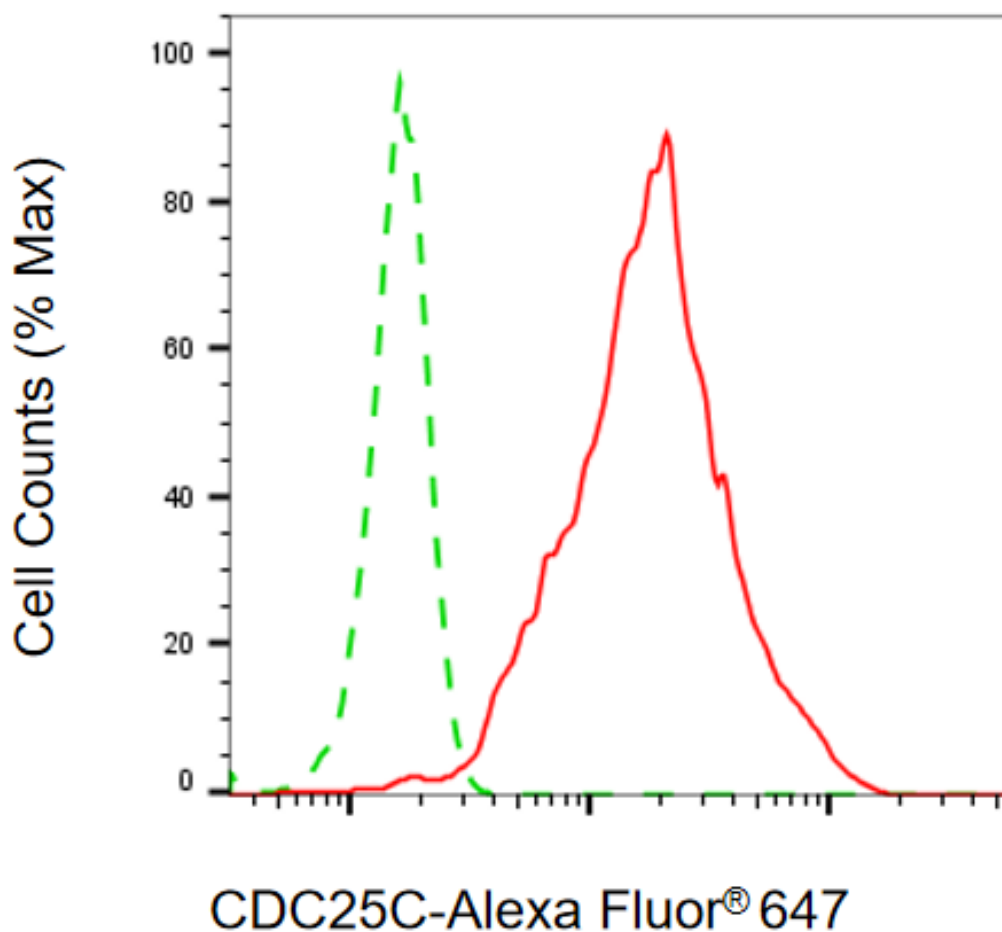
WWW.GENUINBIOTECH.COM

Anti-CDC25C Recombinant Rabbit Monoclonal Antibody

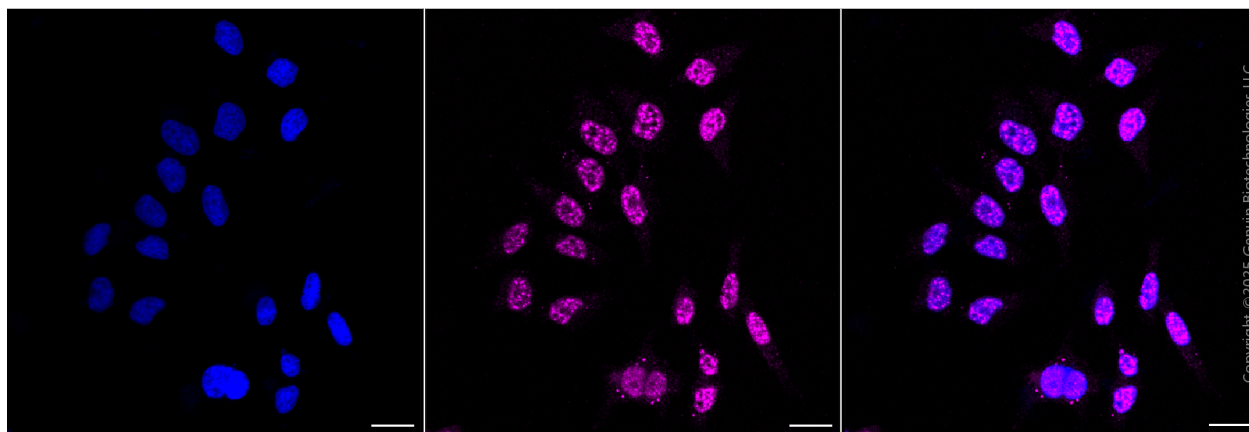
PAGE 2

Note: This product is for research use only.

Validation Data



Flow cytometric analysis of CDC25C expression in HeLa cells using anti-CDC25C antibody (Cat#4252, 1:2,000). Green, isotype control; red, CDC25C.



SUPPORT

SUPPORT@GENUINBIOTECH.COM
TEL: +1-540-855-7041

ORDERS

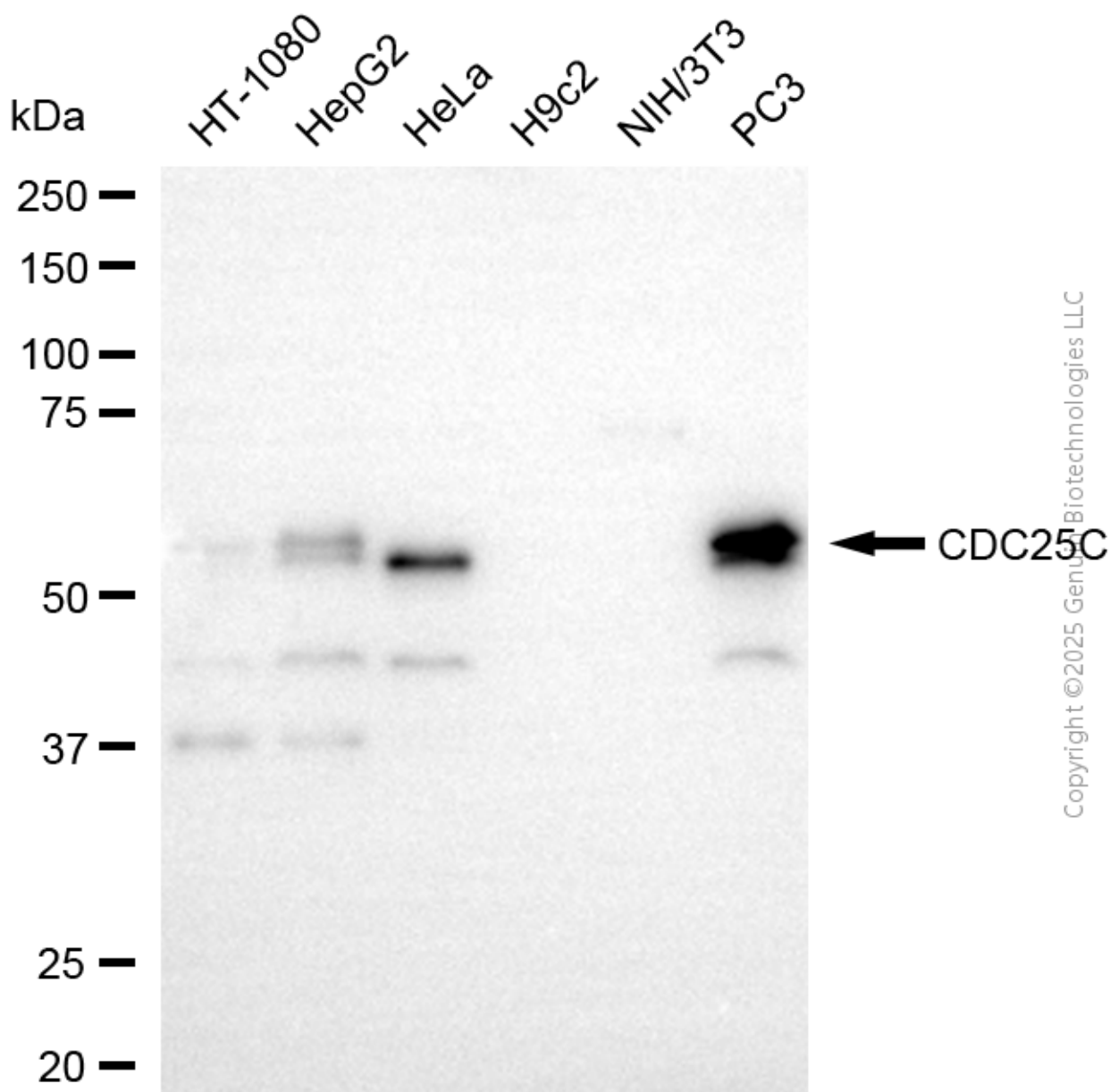
SALES@GENUINBIOTECH.COM
FAX: +1-540-855-7041

WWW.GENUINBIOTECH.COM

Anti-CDC25C Recombinant Rabbit Monoclonal Antibody

PAGE 3

Immunocytochemical staining of HeLa cells with anti-CDC25C antibody (Cat#4252, 1:1,000) . Nuclei were stained blue with DAPI; CDC25C was stained magenta with Alexa Fluor® 647. Images were taken using Leica stellaris 5. Protein abundance based on laser Intensity and smart gain: Medium. Scale bar, 20 μ m.



Western blotting analysis using anti-CDC25C antibody (Cat#4252). Total cell lysates (30 μ g) from various cell lines were loaded and separated by SDS-PAGE. The blot was incubated with anti-CDC25C antibody (Cat#4252, 1:5,000) and HRP-conjugated goat anti-rabbit secondary antibody (Cat#201, 1:20,000) respectively. Image was developed using FeQ™ ECL Substrate Kit (Cat#226).

SUPPORT

SUPPORT@GENUINBIOTECH.COM
TEL: +1-540-855-7041

ORDERS

SALES@GENUINBIOTECH.COM
FAX: +1-540-855-7041

WWW.GENUINBIOTECH.COM