

# Anti-CDC23 Recombinant Rabbit Monoclonal Antibody



**Catalog #: 4258**

## Aliases

CDC23; Cell Division Cycle 23; ANAPC8; APC8; CUT23; Cell Division Cycle Protein 23 Homolog; Anaphase-Promoting Complex Subunit 8; Cyclosome Subunit 8; CDC23 (Cell Division Cycle 23, Yeast, Homolog); Cell Division Cycle 23 Homolog (S. Cerevisiae); Anaphase Promoting Complex Subunit 8; Cell Division Cycle 23 Homolog

## Background

Gene Name: CDC23

NCBI Gene Entry: [8697](#)

UniProt Entry: [Q9UJX2](#)

## Application Information

Molecular Weight: Predicted, 69 kDa; observed, 64 kDa

Clonality: Rabbit monoclonal antibody

Clone ID: 24GB10320

Species Reactivity: Human, mouse, rat

Applications Tested: Western blotting (WB), flow cytometry (FCM), immunocytochemistry (IC)

## Immunogen

A synthesized peptide derived from human Cdc23/APC8

## Isotype

Rabbit IgG

## Storage Buffer

Supplied in PBS (pH 7.4) containing 50% glycerol, and 0.02% sodium azide.

## Storage

Store at -20 °C for one year.

## Recommended Dilutions

Western Blotting (WB): 1:1,000-1:5,000

Flow Cytometry (FCM): 1:2,000

Immunocytochemistry (IC): 1:100-1:1,000

---

### SUPPORT

SUPPORT@GENUINBIOTECH.COM  
TEL: +1-540-855-7041

### ORDERS

SALES@GENUINBIOTECH.COM  
FAX: +1-540-855-7041

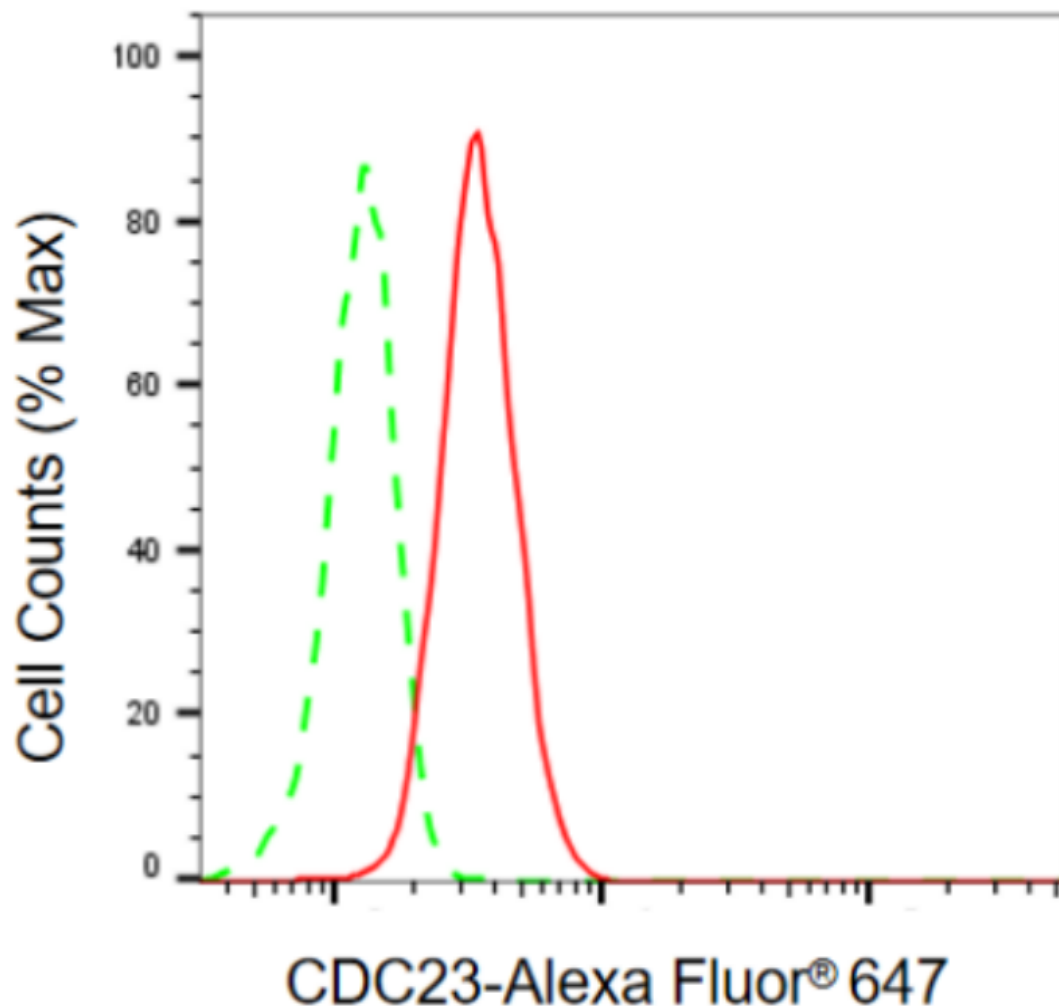
[WWW.GENUINBIOTECH.COM](http://WWW.GENUINBIOTECH.COM)

# Anti-CDC23 Recombinant Rabbit Monoclonal Antibody

PAGE 2

**Note:** This product is for research use only.

## Validation Data



Copyright ©2024 Genuin Biotechnologies LLC

Flow cytometric analysis of CDC23 expression in C2C12 cells using anti-CDC23 antibody (Cat#4258, 1:2,000). Green, isotype control; red, CDC23.

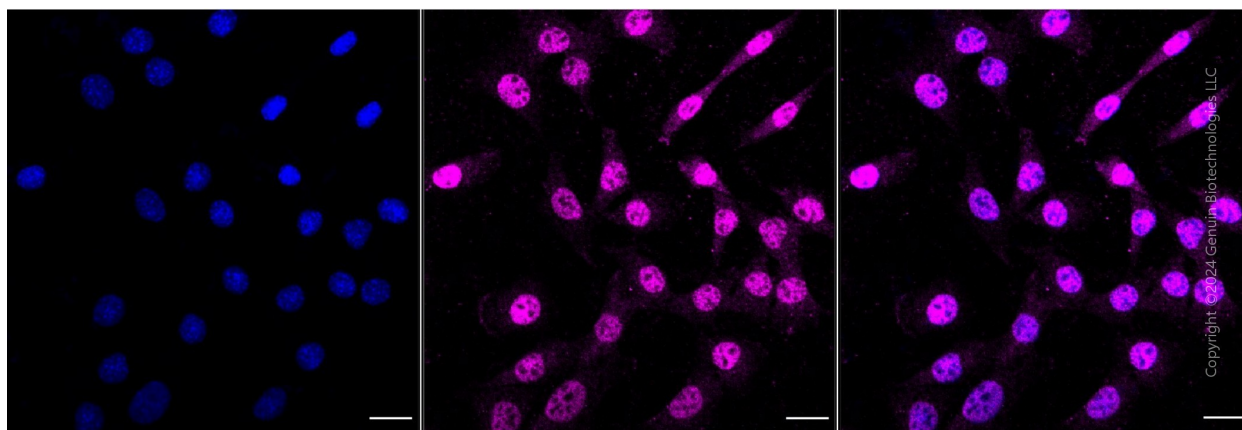
### SUPPORT

SUPPORT@GENUINBIOTECH.COM  
TEL: +1-540-855-7041

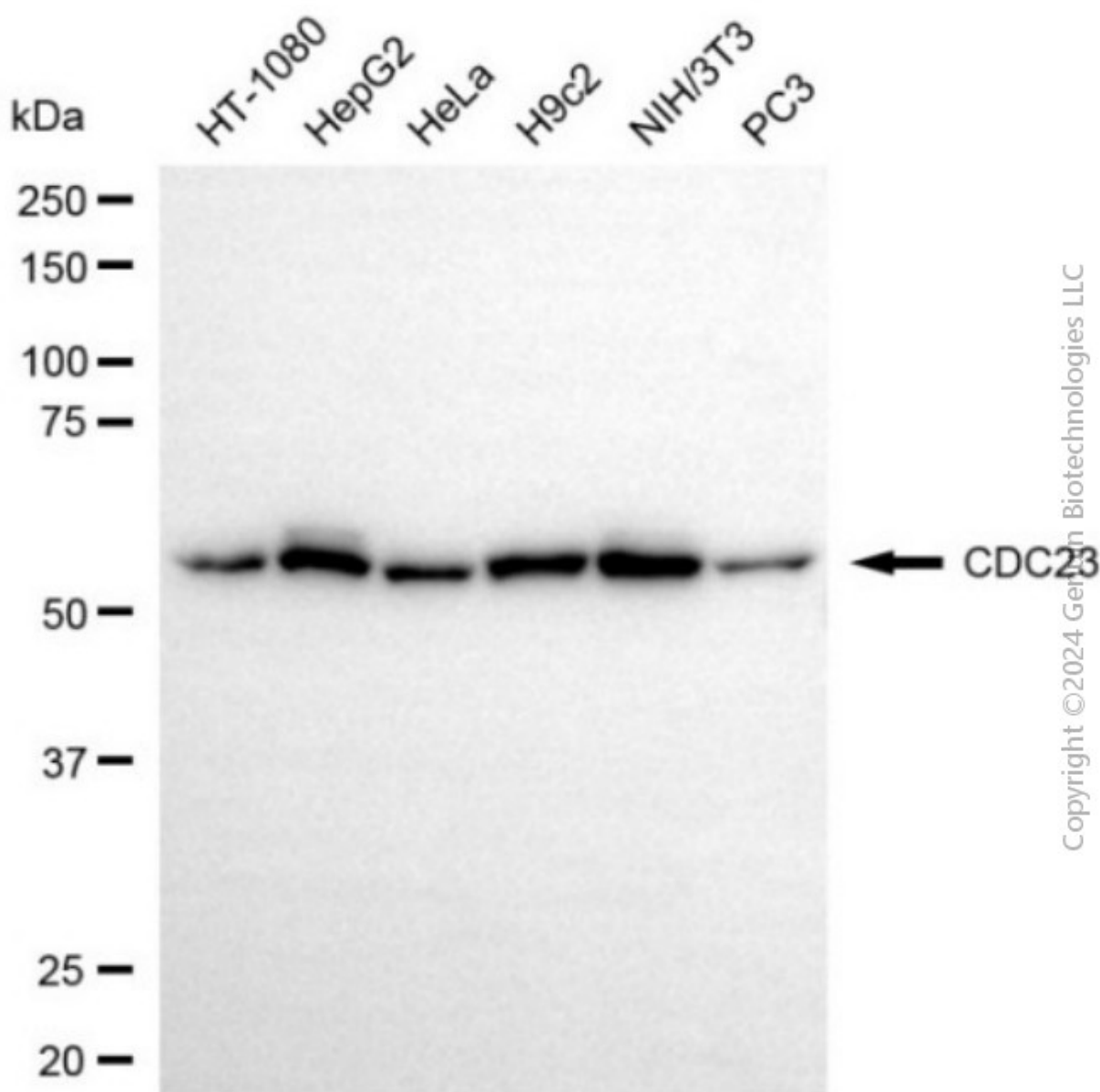
### ORDERS

SALES@GENUINBIOTECH.COM  
FAX: +1-540-855-7041

[WWW.GENUINBIOTECH.COM](http://WWW.GENUINBIOTECH.COM)



Immunocytochemical staining of C2C12 cells with anti-CDC23 antibody (Cat#4258, 1:1,000) . Nuclei were stained blue with DAPI; CDC23 was stained magenta with Alexa Fluor® 647. Images were taken using Leica stellaris 5. Protein abundance based on laser Intensity and smart gain: Medium. Scale bar, 20  $\mu$ m.



Copyright ©2024 Genin Biotechnologies LLC

Western blotting analysis using anti-CDC23 antibody (Cat#4258). Total cell lysates (30  $\mu$ g) from various cell lines were loaded and separated by SDS-PAGE. The blot was incubated with anti-CDC23 antibody (Cat#4258, 1:5,000) and HRP-conjugated goat anti-rabbit secondary antibody (Cat#201, 1:20,000) respectively. Image was developed using NaQ™ ECL Substrate Kit (Cat#716).