

# Anti-CDC37 Recombinant Rabbit Monoclonal Antibody



**Catalog #: 4261**

## Aliases

CDC37; Cell Division Cycle 37, HSP90 Cochaperone; Hsp90 Co-Chaperone Cdc37; P50CDC37; CDC37 (Cell Division Cycle 37, S. Cerevisiae, Homolog); Hsp90 Chaperone Protein Kinase-Targeting Subunit; CDC37 Cell Division Cycle 37 Homolog; CDC37 Cell Division Cycle 37 Homolog (S. Cerevisiae); Cell Division Cycle 37 Homolog (S. Cerevisiae); Cell Division Cycle 37 Homolog; P50Cdc37; CDC37A

## Background

Gene Name: CDC37

NCBI Gene Entry: [11140](#)

UniProt Entry: [Q16543](#)

## Application Information

Molecular Weight: Predicted, 44 kDa; observed, 44 kDa

Clonality: Rabbit monoclonal antibody

Clone ID: 24GB10335

Species Reactivity: Human, mouse, rat

Applications Tested: Western blotting (WB), flow cytometry (FCM), immunocytochemistry (IC)

## Immunogen

A synthesized peptide derived from human Cdc37

## Isotype

Rabbit IgG

## Storage Buffer

Supplied in PBS (pH 7.4) containing 50% glycerol, and 0.02% sodium azide.

## Storage

Store at -20 °C for one year.

## Recommended Dilutions

Western Blotting (WB): 1:1,000-1:5,000

Flow Cytometry (FCM): 1:2,000

Immunocytochemistry (IC): 1:100-1:1,000

---

### SUPPORT

SUPPORT@GENUINBIOTECH.COM  
TEL: +1-540-855-7041

### ORDERS

SALES@GENUINBIOTECH.COM  
FAX: +1-540-855-7041

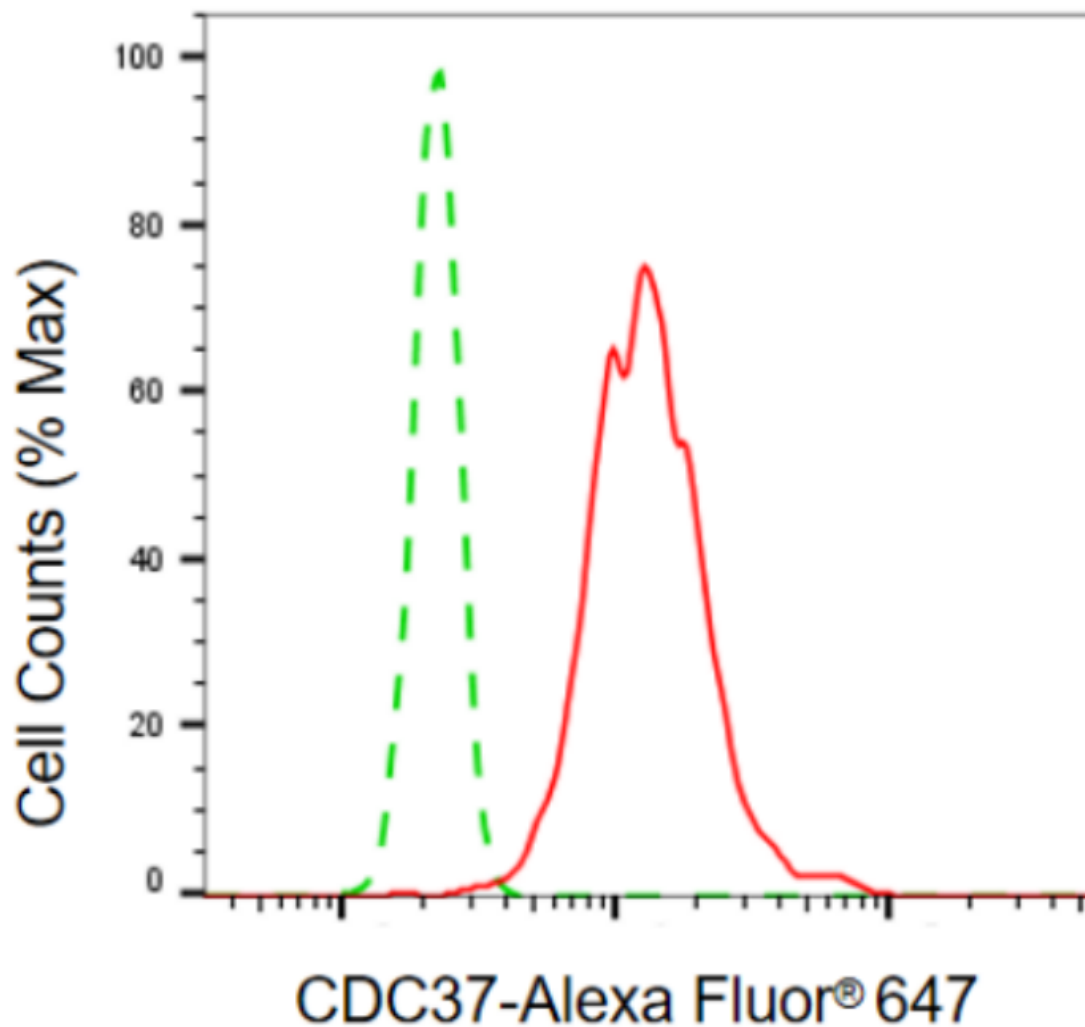
[WWW.GENUINBIOTECH.COM](http://WWW.GENUINBIOTECH.COM)

# Anti-CDC37 Recombinant Rabbit Monoclonal Antibody

PAGE 2

**Note:** This product is for research use only.

## Validation Data



Copyright ©2024 Genuin Biotechnologies LLC

Flow cytometric analysis of CDC37 expression in HT-1080 cells using anti-CDC37 antibody (Cat#4261, 1:2,000). Green, isotype control; red, CDC37.

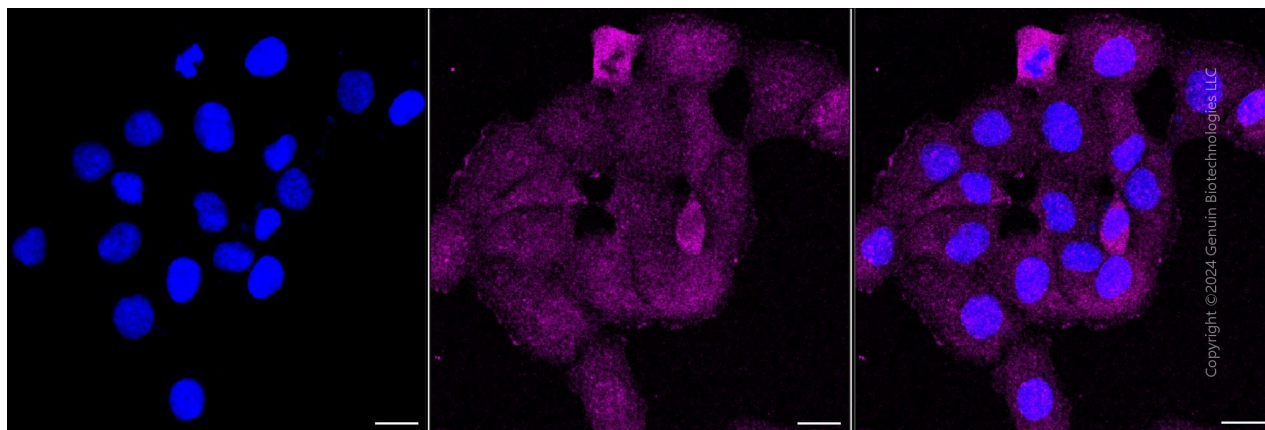
### SUPPORT

SUPPORT@GENUINBIOTECH.COM  
TEL: +1-540-855-7041

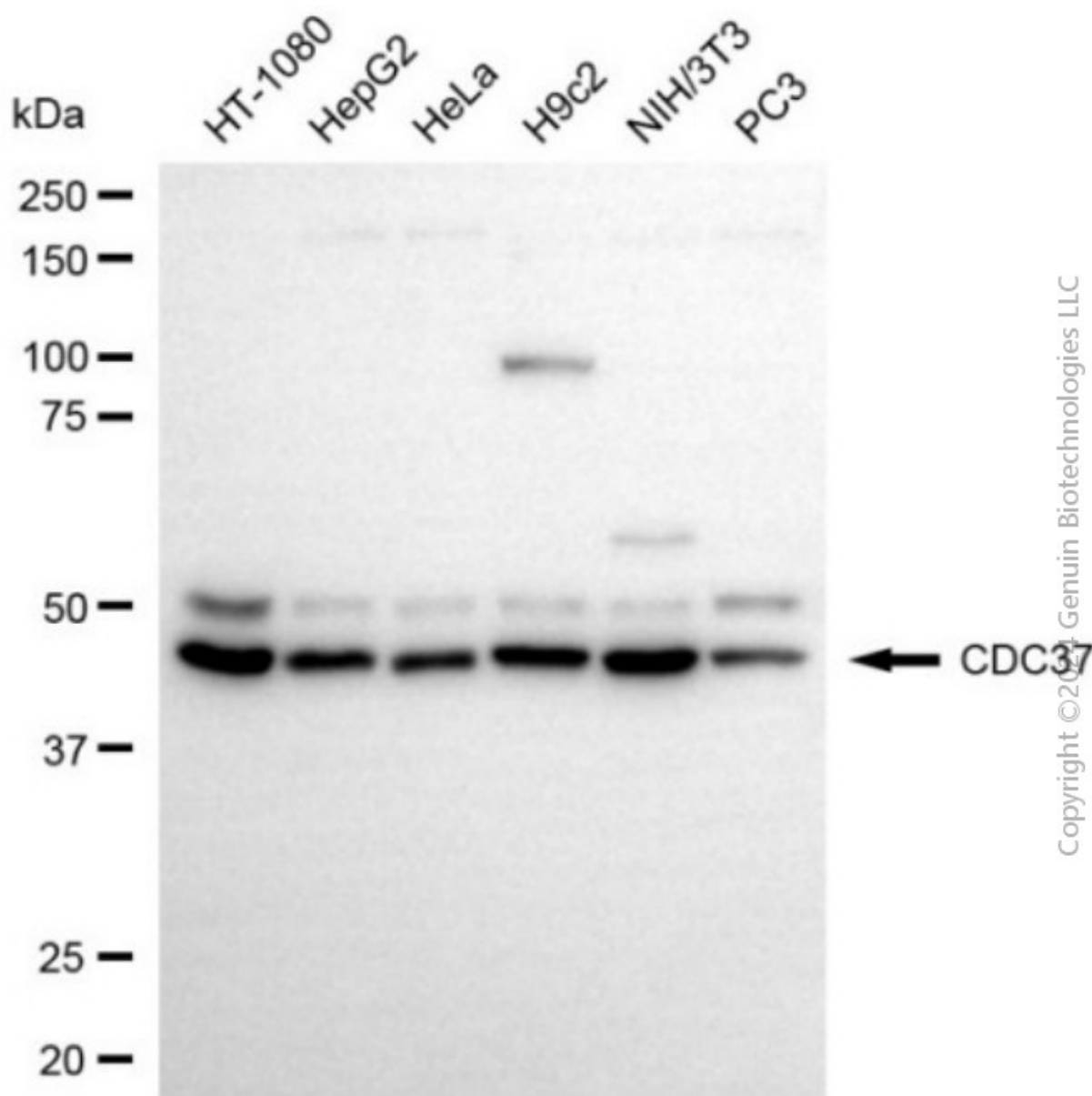
### ORDERS

SALES@GENUINBIOTECH.COM  
FAX: +1-540-855-7041

[WWW.GENUINBIOTECH.COM](http://WWW.GENUINBIOTECH.COM)



Immunocytochemical staining of HT-1080 cells with anti-CDC37 antibody (Cat#4261, 1:1,000) . Nuclei were stained blue with DAPI; CDC37 was stained magenta with Alexa Fluor® 647. Images were taken using Leica stellaris 5. Protein abundance based on laser Intensity and smart gain: Medium. Scale bar, 20  $\mu$ m.



Western blotting analysis using anti-CDC37 antibody (Cat#4261). Total cell lysates (30 µg) from various cell lines were loaded and separated by SDS-PAGE. The blot was incubated with anti-CDC37 antibody (Cat#4261, 1:5,000) and HRP-conjugated goat anti-rabbit secondary antibody (Cat#201, 1:20,000) respectively. Image was developed using NaQ™ ECL Substrate Kit (Cat#716).