

Catalog #: 4264

Aliases

ARID1A; AT-Rich Interaction Domain 1A; BAF250; B120; BAF250a; SMARCF1; C1orf4; P270; SWI/SNF-Related, Matrix-Associated, Actin-Dependent Regulator Of Chromatin Subfamily F Member 1; AT-Rich Interactive Domain-Containing Protein 1A; AT Rich Interactive Domain 1A (SWI-Like); ARID Domain-Containing Protein 1A; SWI/SNF Complex Protein P270; BRG1-Associated Factor 250a; SWI-Like Protein; Osa Homolog 1; C10rf4; HOSA1; OSA1; HELD; SWI/SNF Related, Matrix Associated, Actin Dependent Regulator Of Chromatin, Subfamily F, Member 1; AT Rich Interactive Domain 1A (SWI- Like); Chromatin Remodeling Factor P250; BRG1-Associated Factor 250; OSA1 Nuclear Protein; Brain Protein 120; BAF250A; BM029; MRD14; CSS2; ELD

Background

Gene Name: ARID1A

NCBI Gene Entry: [8289](#)

UniProt Entry: [O14497](#)

Application Information

Molecular Weight: Predicted, 242 kDa; observed, 270 kDa

Clonality: Rabbit monoclonal antibody

Clone ID: 24GB10350

Species Reactivity: Human, mouse, rat

Applications Tested: Western blotting (WB), immunocytochemistry (IC), flow cytometry (FCM)

Immunogen

A synthesized peptide derived from human ARID1A

Isotype

Rabbit IgG

Storage Buffer

Supplied in PBS (pH 7.4) containing 50% glycerol, and 0.02% sodium azide.

Storage

Store at -20 °C for one year.

Recommended Dilutions

SUPPORT

SUPPORT@GENUINBIOTECH.COM
TEL: +1-540-855-7041

ORDERS

SALES@GENUINBIOTECH.COM
FAX: +1-540-855-7041

WWW.GENUINBIOTECH.COM

Anti-ARID1A Recombinant Rabbit Monoclonal Antibody

PAGE 2

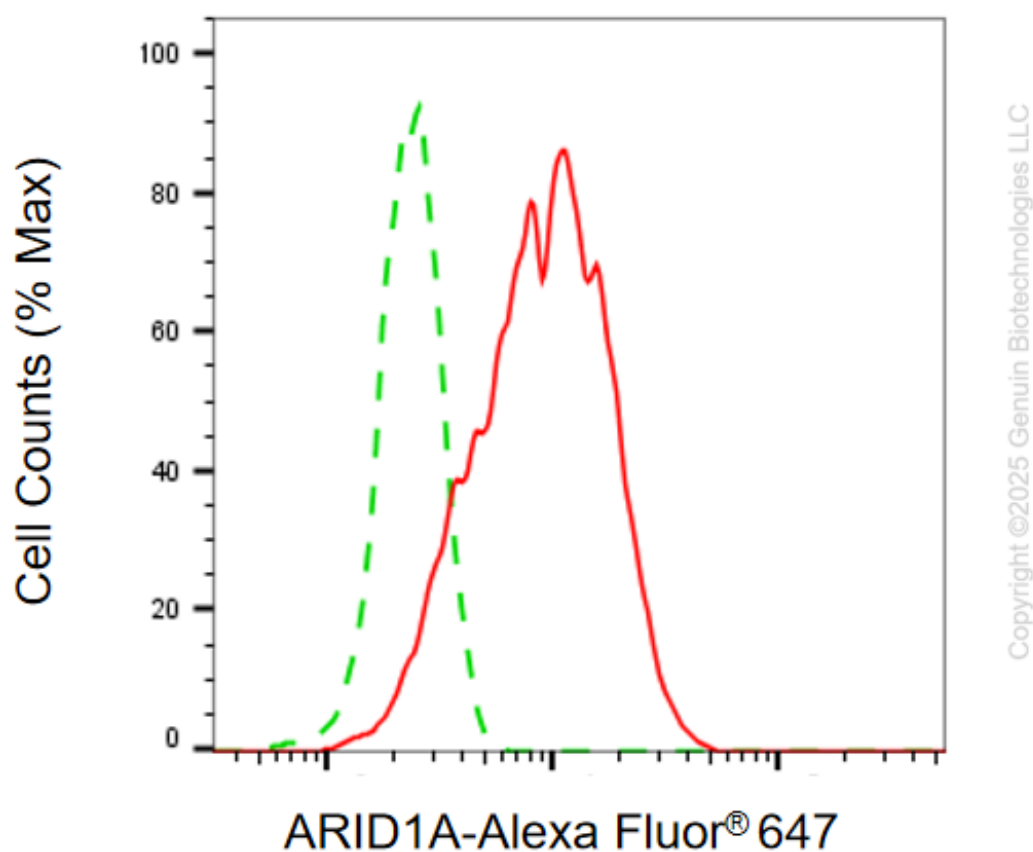
Western Blotting (WB): 1:1,000-1:5,000

Flow Cytometry (FCM): 1:2,000

Immunocytochemistry (IC): 1:200 - 1:1,000

Note: This product is for research use only.

Validation Data



Flow cytometric analysis of ARID1A expression in C2C12 cells using anti-ARID1A antibody (Cat#4264, 1:2,000). Green, isotype control; red, ARID1A.

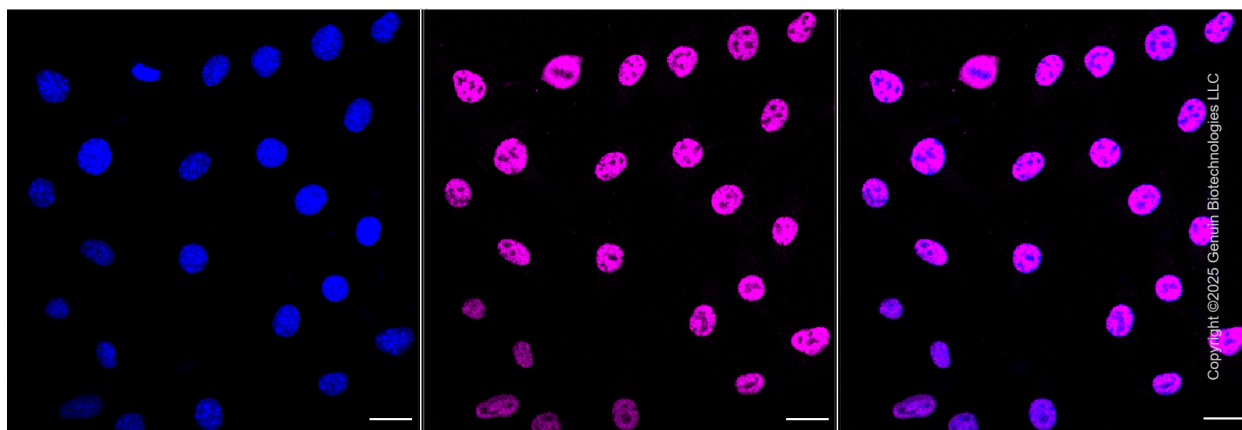
SUPPORT

SUPPORT@GENUINBIOTECH.COM
TEL: +1-540-855-7041

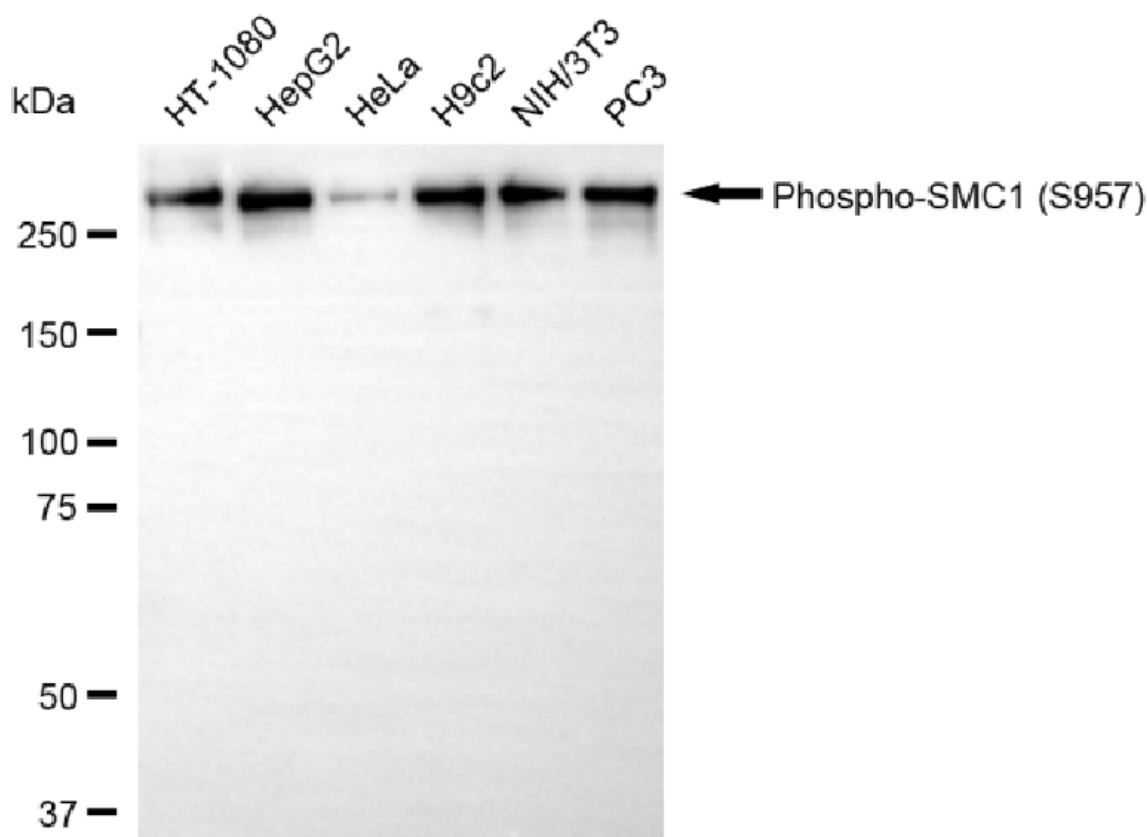
ORDERS

SALES@GENUINBIOTECH.COM
FAX: +1-540-855-7041

WWW.GENUINBIOTECH.COM



Immunocytochemical staining of C2C12 cells with anti-ARID1A antibody (Cat#4264, 1:1,000). Nuclei were stained blue with DAPI; ARID1A was stained magenta with Alexa Fluor® 647. Images were taken using Leica stellaris 5. Protein abundance based on laser Intensity and smart gain: Medium. Scale bar, 20 μ m.



Western blotting analysis using anti-phospho-SMC1(S957) antibody (Cat#4264). Total cell lysates (30 μ g) from various cell lines were loaded and separated by SDS-PAGE. The blot was incubated with anti-phospho-SMC1(S957) antibody (Cat#4264, 1:5,000) and HRP-conjugated goat anti-rabbit secondary antibody (Cat#201, 1:20,000) respectively. Image was developed using NaQ™ ECL Substrate Kit (Cat#716).

SUPPORT

SUPPORT@GENUINBIOTECH.COM
TEL: +1-540-855-7041

ORDERS

SALES@GENUINBIOTECH.COM
FAX: +1-540-855-7041

WWW.GENUINBIOTECH.COM

SUPPORT

SUPPORT@GENUINBIOTECH.COM
TEL: +1-540-855-7041

ORDERS

SALES@GENUINBIOTECH.COM
FAX:+1-540-855-7041

WWW.GENUINBIOTECH.COM