

Anti-ACSS2 Recombinant Rabbit Monoclonal Antibody



Catalog #: 4266

Aliases

ACSS2; Acyl-CoA Synthetase Short Chain Family Member 2; ACS; DJ1161H23.1; ACAS2; ACSA; Acetyl-Coenzyme A Synthetase 2 (ADP Forming); Acetyl-Coenzyme A Synthetase, Cytoplasmic; Acetyl-CoA Synthetase 1; Acyl-Activating Enzyme; Propionate--CoA Ligase; EC 6.2.1.1; AceCS1; AceCS; ACECS; Acyl-CoA Synthetase Short-Chain Family Member 2; Cytoplasmic Acetyl-Coenzyme A Synthetase; Acetyl-CoA Synthetase; Acetate--CoA Ligase; Acetate Thiokinase; Acetate-CoA Ligase; EC 6.2.1.17; EC 6.2.1

Background

Gene Name: ACSS2

NCBI Gene Entry: [55902](#)

UniProt Entry: [Q9NR19](#)

Application Information

Molecular Weight: Predicted, 79 kDa; observed, 78 kDa

Clonality: Rabbit monoclonal antibody

Clone ID: 24GB10360

Species Reactivity: Human, mouse, rat

Applications Tested: Western blotting (WB), flow cytometry (FCM)

Immunogen

A synthesized peptide derived from human ACSS2

Isotype

Rabbit IgG

Storage Buffer

Supplied in PBS (pH 7.4) containing 50% glycerol, and 0.02% sodium azide.

Storage

Store at -20 °C for one year.

Recommended Dilutions

Western Blotting (WB): 1:1,000-1:5,000

Flow Cytometry (FCM): 1:2,000

SUPPORT

SUPPORT@GENUINBIOTECH.COM
TEL: +1-540-855-7041

ORDERS

SALES@GENUINBIOTECH.COM
FAX: +1-540-855-7041

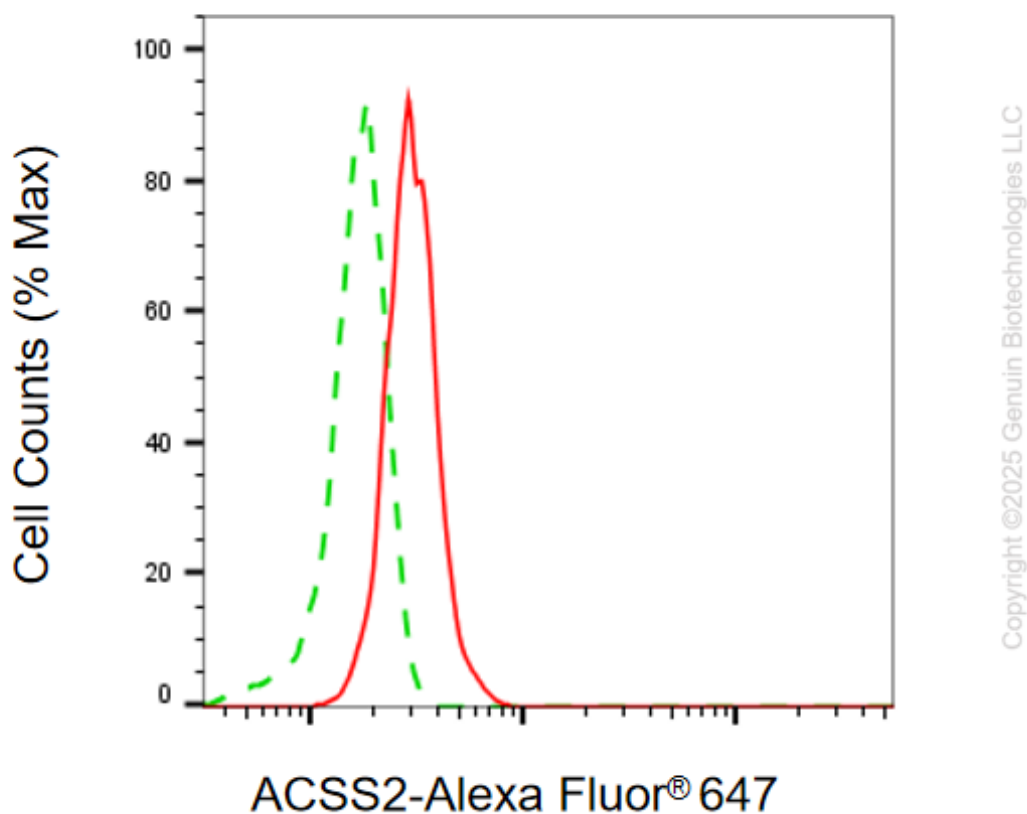
WWW.GENUINBIOTECH.COM

Anti-ACSS2 Recombinant Rabbit Monoclonal Antibody

PAGE 2

Note: This product is for research use only.

Validation Data



Flow cytometric analysis of ACSS2 expression in HepG2 cells using anti-ACSS2 antibody (Cat#4266, 1:2,000). Green, isotype control; red, ACSS2.

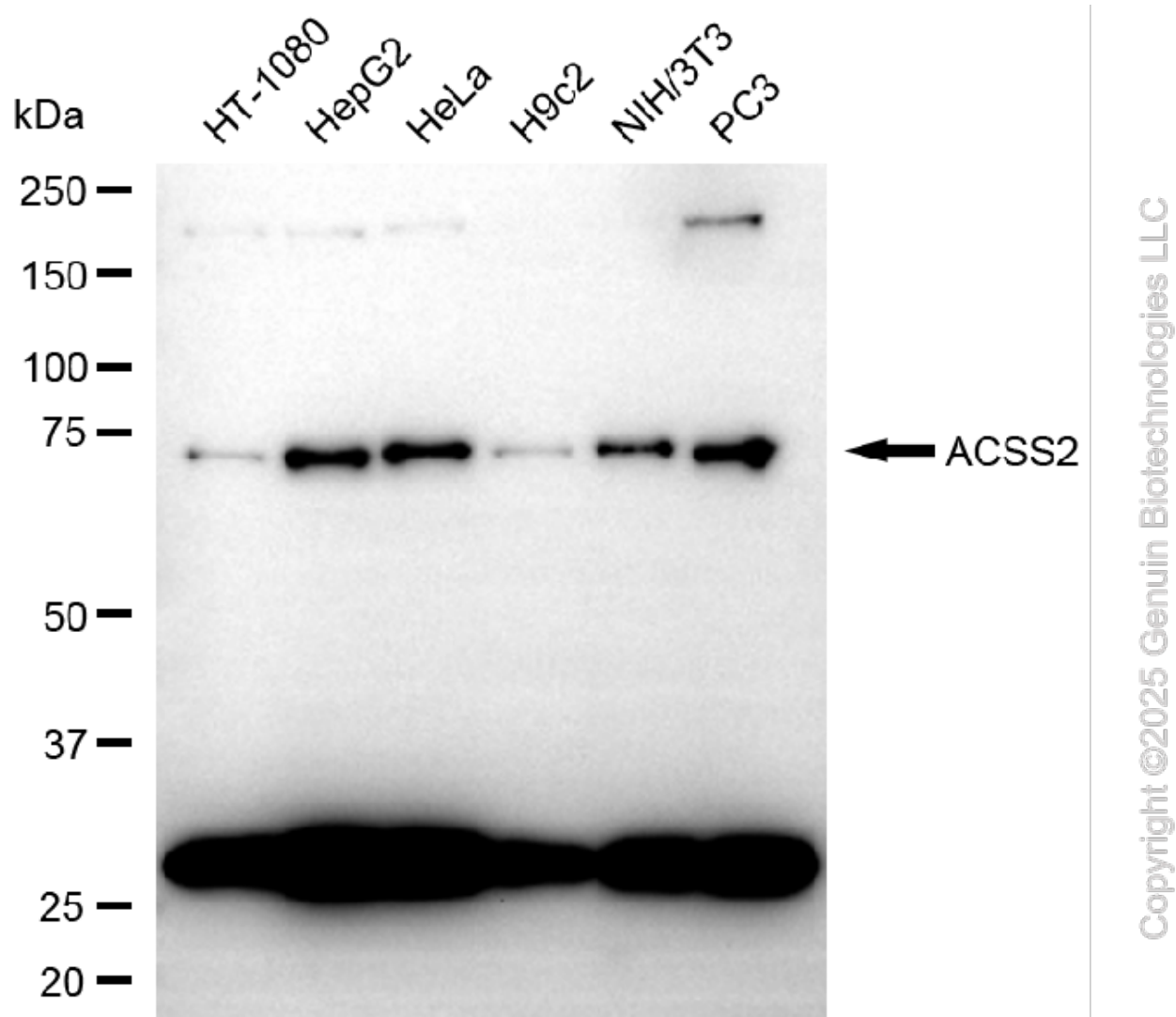
SUPPORT

SUPPORT@GENUINBIOTECH.COM
TEL: +1-540-855-7041

ORDERS

SALES@GENUINBIOTECH.COM
FAX: +1-540-855-7041

WWW.GENUINBIOTECH.COM



Western blotting analysis using anti-ACSS2 antibody (Cat#4266). Total cell lysates (30 µg) from various cell lines were loaded and separated by SDS-PAGE. The blot was incubated with anti-ACSS2 antibody (Cat#4266, 1:5,000) and HRP-conjugated goat anti-rabbit secondary antibody (Cat#201, 1:20,000) respectively. Image was developed using FeQ™ ECL Substrate Kit (Cat#226).

SUPPORT

SUPPORT@GENUINBIOTECH.COM
TEL: +1-540-855-7041

ORDERS

SALES@GENUINBIOTECH.COM
FAX: +1-540-855-7041

WWW.GENUINBIOTECH.COM