

# Anti-Phospho-GSK3 (alpha + beta)(Y216 + Y279) Recombinant Rabbit Monoclonal



**Catalog #: 4269**

## Aliases

GSK3A; Glycogen Synthase Kinase 3 Alpha; Serine/Threonine-Protein Kinase GSK3A; Glycogen Synthase Kinase-3 Alpha; EC 2.7.11.26; GSK-3 Alpha; EC 2.7.11.1; EC 2.7.11; GSK3B; Glycogen Synthase Kinase 3 Beta; Serine/Threonine-Protein Kinase GSK3B; Glycogen Synthase Kinase-3 Beta; EC 2.7.11.26; GSK-3 Beta; EC 2.7.11.1; EC 2.7.11

## Background

Gene Name: GSK3A

NCBI Gene Entry: [2931/2932](#)

UniProt Entry: [P49840/P49841](#)

## Application Information

Molecular Weight: Predicted, 51 kDa; observed, 46,51 kDa

Clonality: Rabbit monoclonal antibody

Clone ID: 24GB10375

Species Reactivity: Human, mouse, rat

Applications Tested: Western blotting (WB), immunocytochemistry (IC), flow cytometry (FCM)

## Immunogen

A synthesized peptide derived from human GSK3 alpha around the phosphorylation site of Y279

## Isotype

Rabbit IgG

## Storage Buffer

Supplied in PBS (pH 7.4) containing 50% glycerol, and 0.02% sodium azide.

## Storage

Store at -20 °C for one year.

## Recommended Dilutions

Western Blotting (WB): 1:1,000-1:5,000

Immunocytochemistry (IC): 1:100-1:1,000

Flow Cytometry (FCM): 1:2,000

---

### SUPPORT

SUPPORT@GENUINBIOTECH.COM  
TEL: +1-540-855-7041

### ORDERS

SALES@GENUINBIOTECH.COM  
FAX: +1-540-855-7041

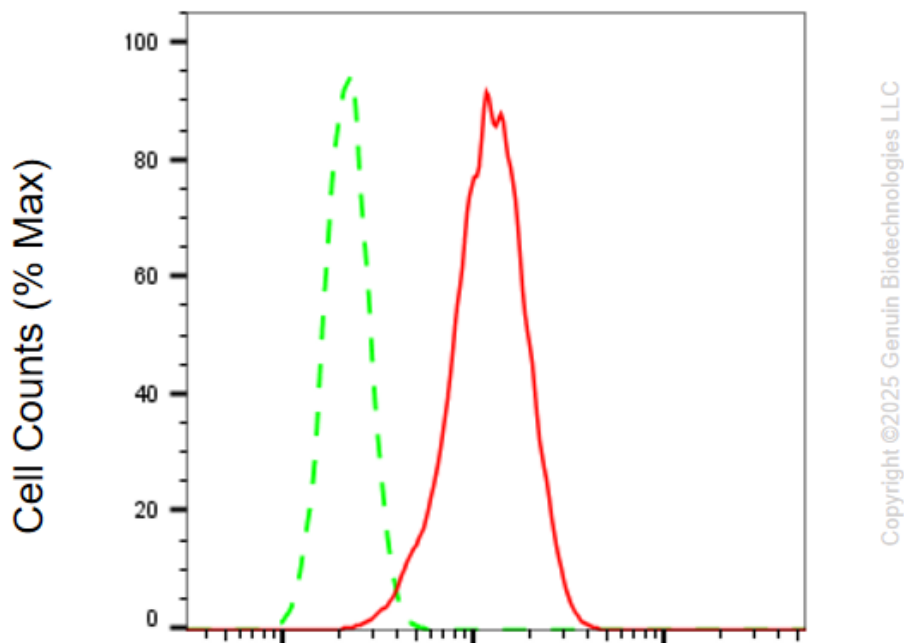
[WWW.GENUINBIOTECH.COM](http://WWW.GENUINBIOTECH.COM)

## Anti-Phospho-GSK3 (alpha + beta)(Y216 + Y279) Recombinant Rabbit Monoclonal

PAGE 2

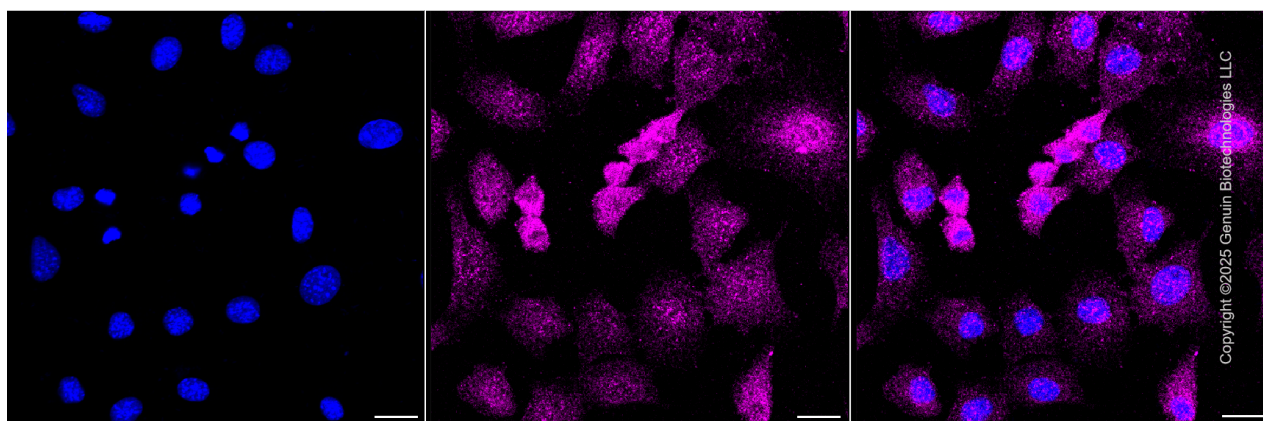
**Note:** This product is for research use only.

### Validation Data



### Phospho-GSK3 (alpha + beta)(Y216 + Y279)-Alexa Fluor® 647

Flow cytometric analysis of Phospho-GSK3 (alpha + beta)(Y216 + Y279) expression in C2C12 cells using anti-Phospho-GSK3 (alpha + beta)(Y216 + Y279) antibody (Cat#4269, 1:2,000). Green, isotype control; red, Phospho-GSK3 (alpha + beta)(Y216 + Y279).



Immunocytochemical staining of C2C12 cells with anti-Phospho-GSK3 (alpha + beta)(Y216 + Y279) antibody (Cat#4269, 1:1,000) . Nuclei were stained blue with DAPI; Phospho-GSK3 (alpha + beta)(Y216 + Y279) was stained magenta with Alexa Fluor® 647. Images were taken

#### SUPPORT

SUPPORT@GENUINBIOTECH.COM  
TEL: +1-540-855-7041

#### ORDERS

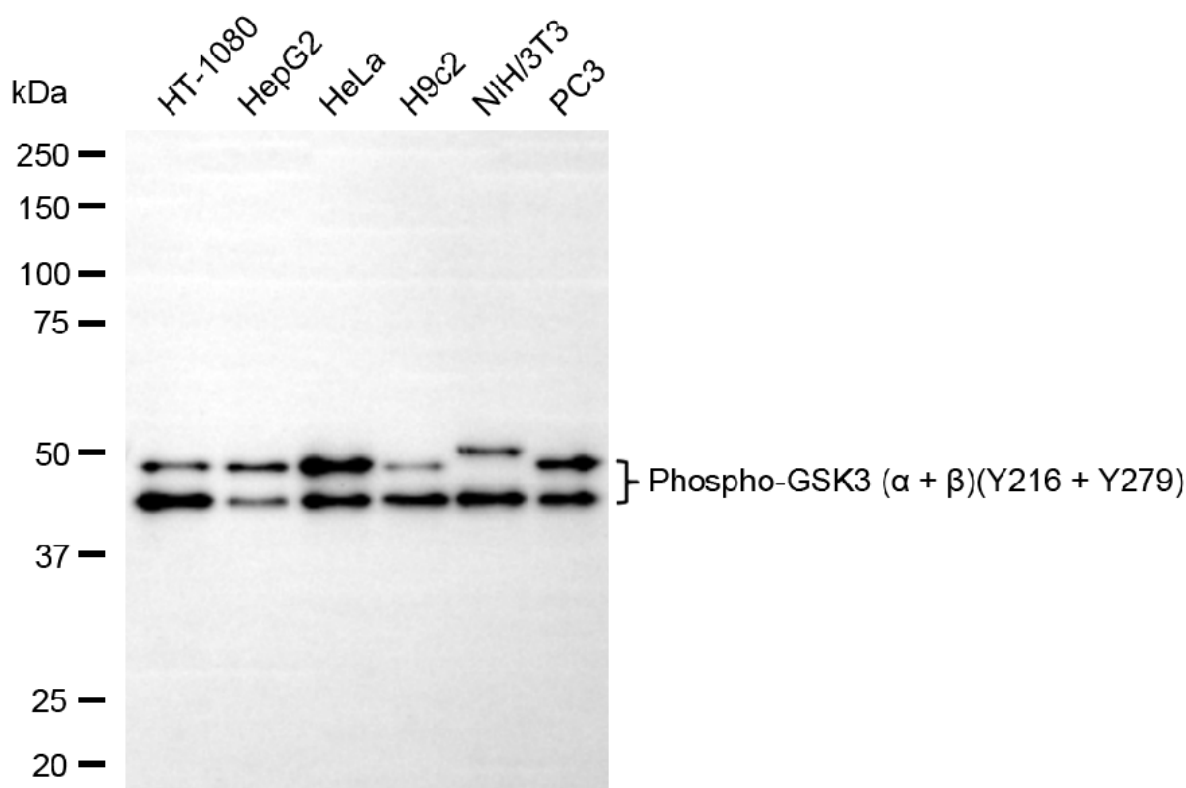
SALES@GENUINBIOTECH.COM  
FAX: +1-540-855-7041

[WWW.GENUINBIOTECH.COM](http://WWW.GENUINBIOTECH.COM)

## Anti-Phospho-GSK3 (alpha + beta)(Y216 + Y279) Recombinant Rabbit Monoclonal

PAGE 3

using Leica stellaris 5. Protein abundance based on laser Intensity and smart gain: Medium. Scale bar, 20  $\mu$ m.



Copyright ©2025 Genuin Biotechnologies LLC

Western blotting analysis using anti-phospho-GSK3 (alpha + beta)(Y216 + Y279) antibody (Cat#4269). Total cell lysates (30  $\mu$ g) from various cell lines were loaded and separated by SDS-PAGE. The blot was incubated with anti-phospho-GSK3 (alpha + beta)(Y216 + Y279) antibody (Cat#4269, 1:5,000) and HRP-conjugated goat anti-rabbit secondary antibody (Cat#201, 1:20,000) respectively. Image was developed using NaQ™ ECL Substrate Kit (Cat#716).

### SUPPORT

SUPPORT@GENUINBIOTECH.COM  
TEL: +1-540-855-7041

### ORDERS

SALES@GENUINBIOTECH.COM  
FAX: +1-540-855-7041

WWW.GENUINBIOTECH.COM