

Anti-E2F transcription factor 1 Recombinant Rabbit Monoclonal Antibody



Catalog #: 4273

Aliases

E2F1; E2F Transcription Factor 1; RBBP3; RBP3; Retinoblastoma-Binding Protein 3 (E2F-Like); Retinoblastoma-Associated Protein 1; Retinoblastoma-Binding Protein 3; Transcription Factor E2F1; PRB-Binding Protein E2F-1; RBAP-1; RBBP-3; E2F-1; PBR3; RBAP1

Background

Gene Name: E2F1

NCBI Gene Entry: [1869](#)

UniProt Entry: [Q01094](#)

Application Information

Molecular Weight: Predicted, 47 kDa; observed, 60,70 kDa

Clonality: Rabbit monoclonal antibody

Clone ID: 24GB10395

Species Reactivity: Human, mouse, rat

Applications Tested: Western blotting (WB), immunocytochemistry (IC), flow cytometry (FCM)

Immunogen

A synthesized peptide derived from human E2F1

Isotype

Rabbit IgG

Storage Buffer

Supplied in PBS (pH 7.4) containing 50% glycerol, and 0.02% sodium azide.

Storage

Store at -20 °C for one year.

Recommended Dilutions

Western Blotting (WB): 1:1,000-1:5,000

Immunocytochemistry (IC): 1:100-1:1,000

Flow Cytometry (FCM): 1:2,000

Note: This product is for research use only.

SUPPORT

SUPPORT@GENUINBIOTECH.COM
TEL: +1-540-855-7041

ORDERS

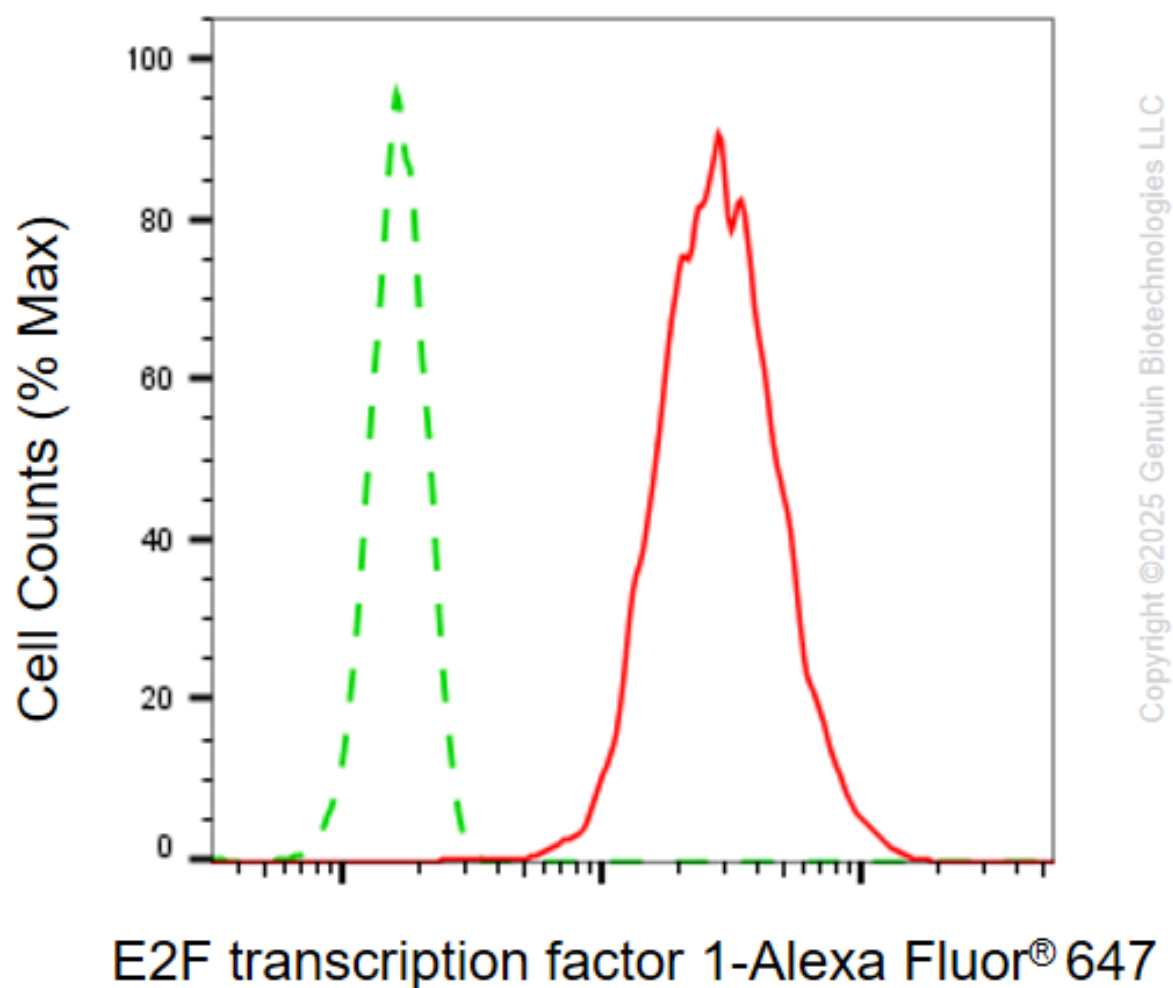
SALES@GENUINBIOTECH.COM
FAX: +1-540-855-7041

WWW.GENUINBIOTECH.COM

Anti-E2F transcription factor 1 Recombinant Rabbit Monoclonal Antibody

PAGE 2

Validation Data



Flow cytometric analysis of E2F transcription factor 1 expression in C2C12 cells using anti-E2F transcription factor 1 antibody (Cat#4273, 1:2,000). Green, isotype control; red, E2F transcription factor 1.

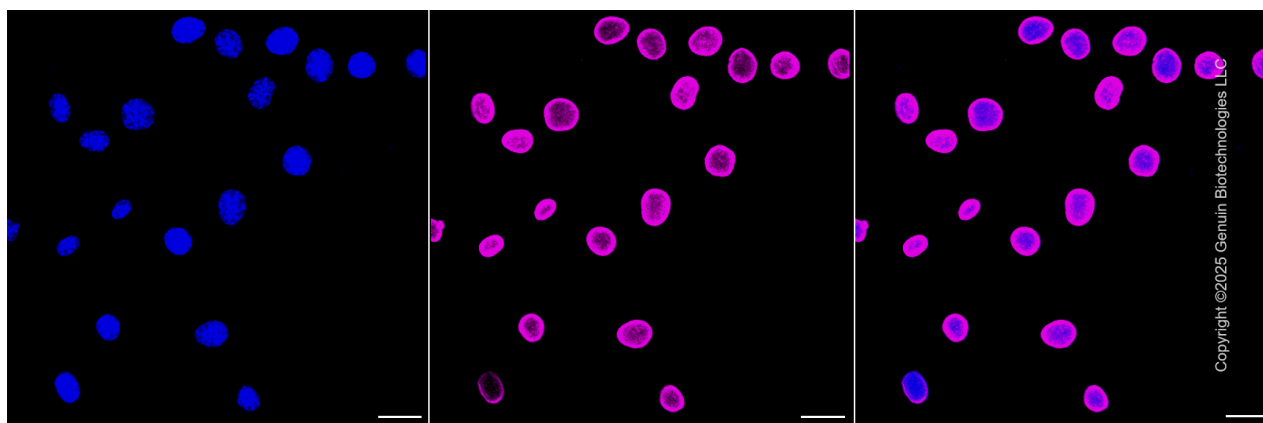
SUPPORT

SUPPORT@GENUINBIOTECH.COM
TEL: +1-540-855-7041

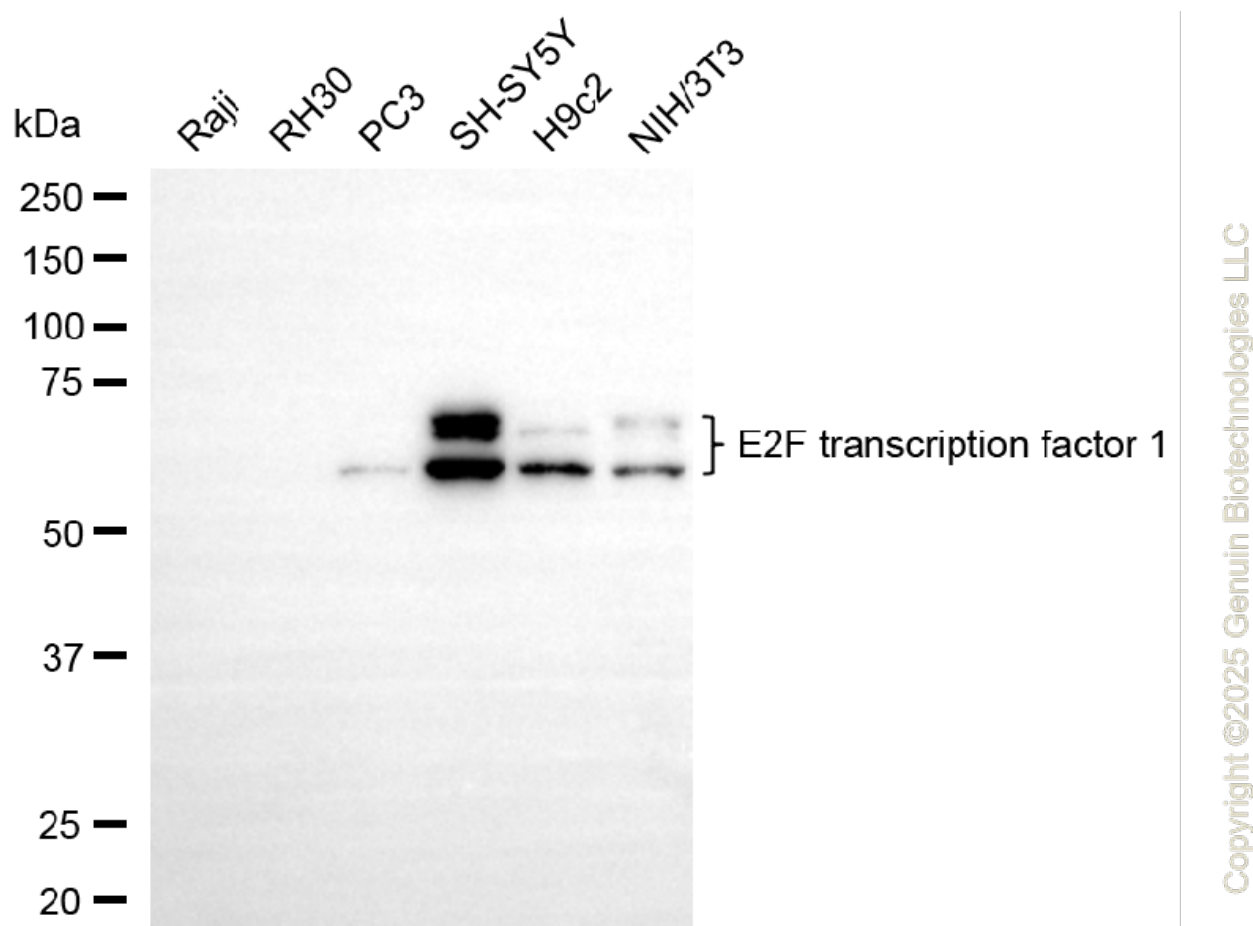
ORDERS

SALES@GENUINBIOTECH.COM
FAX: +1-540-855-7041

WWW.GENUINBIOTECH.COM



Immunocytochemical staining of C2C12 cells with anti-E2F transcription factor 1 antibody (Cat#4273, 1:1,000) . Nuclei were stained blue with DAPI; E2F transcription factor 1 was stained magenta with Alexa Fluor® 647. Images were taken using Leica stellaris 5. Protein abundance based on laser Intensity and smart gain: High. Scale bar, 20 μ m.



Western blotting analysis using anti-E2F transcription factor 1 antibody (Cat#4273). Total cell lysates (30 μ g) from various cell lines were loaded and separated by SDS-PAGE. The blot was incubated with anti-E2F transcription factor 1 antibody (Cat#4273, 1:5,000) and HRP-conjugated goat anti-rabbit secondary antibody (Cat#201, 1:20,000) respectively. Image was developed using

Anti-E2F transcription factor 1 Recombinant Rabbit Monoclonal Antibody

PAGE 4

NaQ™ ECL Substrate Kit (Cat#716).

SUPPORT

SUPPORT@GENUINBIOTECH.COM
TEL: +1-540-855-7041

ORDERS

SALES@GENUINBIOTECH.COM
FAX: +1-540-855-7041

WWW.GENUINBIOTECH.COM