

# Anti-Peroxiredoxin 1 Recombinant Rabbit Monoclonal Antibody



**Catalog #: 4280**

## Aliases

PRDX1; Peroxiredoxin 1; NKEFA; PAGA; Thioredoxin-Dependent Peroxide Reductase; Natural Killer Cell-Enhancing Factor A; Proliferation-Associated Gene Protein; Thioredoxin-Dependent Peroxiredoxin 1; Thioredoxin Peroxidase; Peroxiredoxin-1; NKEF-A; TDPX2; PAGB; PAG; Epididymis Secretory Sperm Binding Protein; Natural Killer-Enhancing Factor A; Proliferation-Associated Gene A; EC 1.11.1.24; EC 1.11.1.15; EC 1.11.1; MSP23; PRX1; PRXI

## Background

Gene Name: PRDX1

NCBI Gene Entry: [5052](#)

UniProt Entry: [Q06830](#)

## Application Information

Molecular Weight: Predicted, 22 kDa; observed, 22 kDa

Clonality: Rabbit monoclonal antibody

Clone ID: 24GB10430

Species Reactivity: Human, mouse

Applications Tested: Western blotting (WB), flow cytometry (FCM), immunocytochemistry (IC)

## Immunogen

A synthesized peptide derived from human PRDX1

## Isotype

Rabbit IgG

## Storage Buffer

Supplied in PBS (pH 7.4) containing 50% glycerol, and 0.02% sodium azide.

## Storage

Store at -20 °C for one year.

## Recommended Dilutions

Western Blotting (WB): 1:1,000-1:5,000

Flow Cytometry (FCM): 1:2,000

Immunocytochemistry (IC): 1:100-1:1,000

---

### SUPPORT

SUPPORT@GENUINBIOTECH.COM  
TEL: +1-540-855-7041

### ORDERS

SALES@GENUINBIOTECH.COM  
FAX: +1-540-855-7041

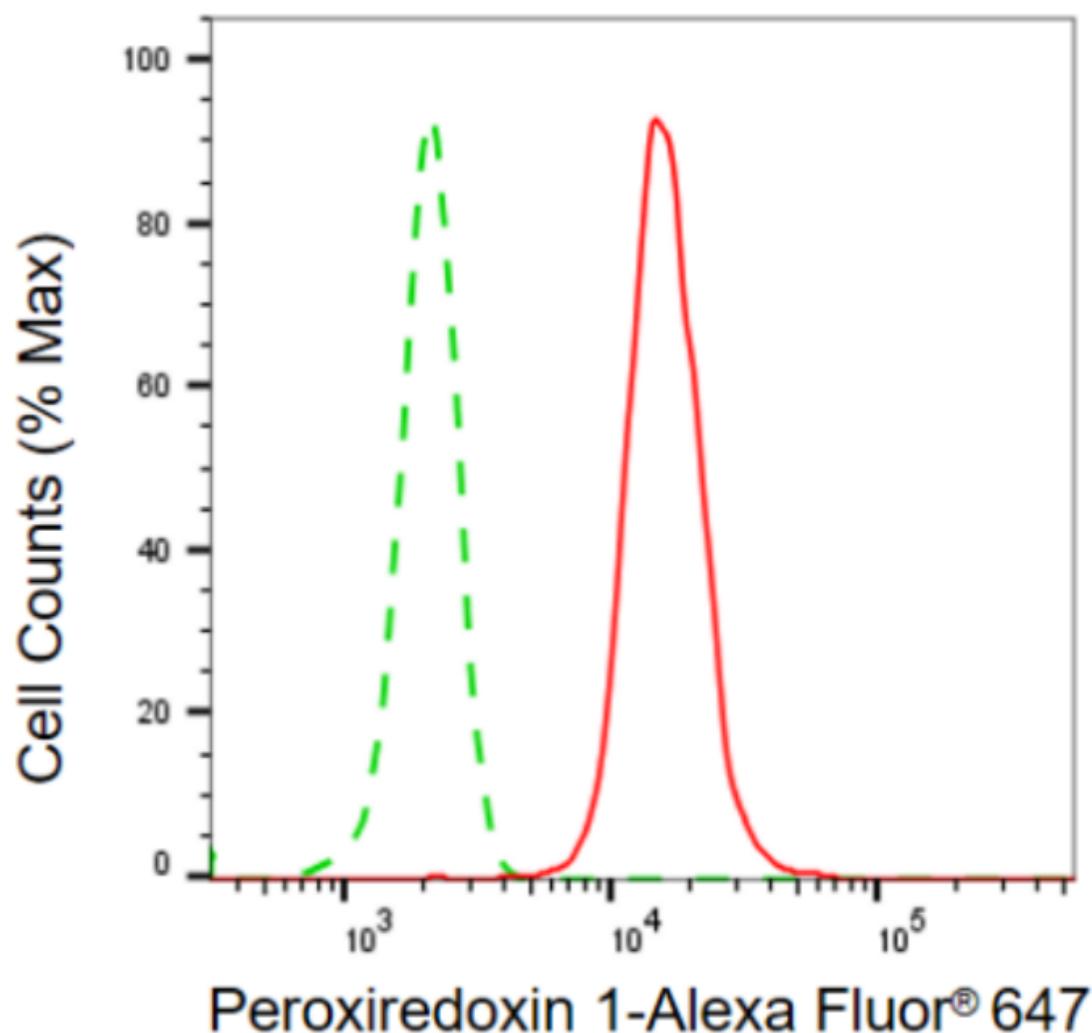
[WWW.GENUINBIOTECH.COM](http://WWW.GENUINBIOTECH.COM)

# Anti-Peroxiredoxin 1 Recombinant Rabbit Monoclonal Antibody

PAGE 2

**Note:** This product is for research use only.

## Validation Data



Copyright ©2024 Genuin Biotechnologies LLC

Flow cytometric analysis of peroxiredoxin 1 expression in HepG2 cells using anti-peroxiredoxin 1 antibody (Cat#4280, 1:2,000). Green, isotype control; red, peroxiredoxin 1.

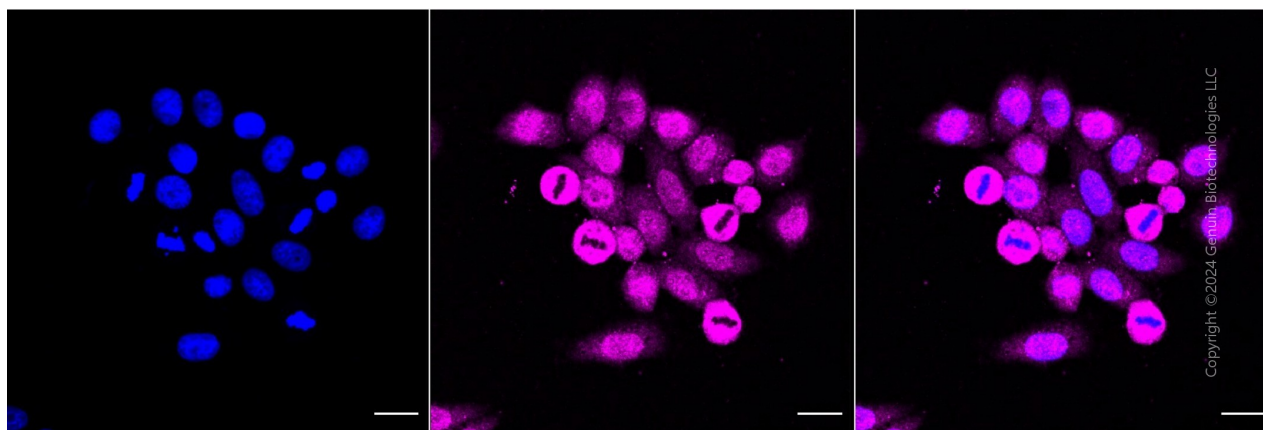
### SUPPORT

SUPPORT@GENUINBIOTECH.COM  
TEL: +1-540-855-7041

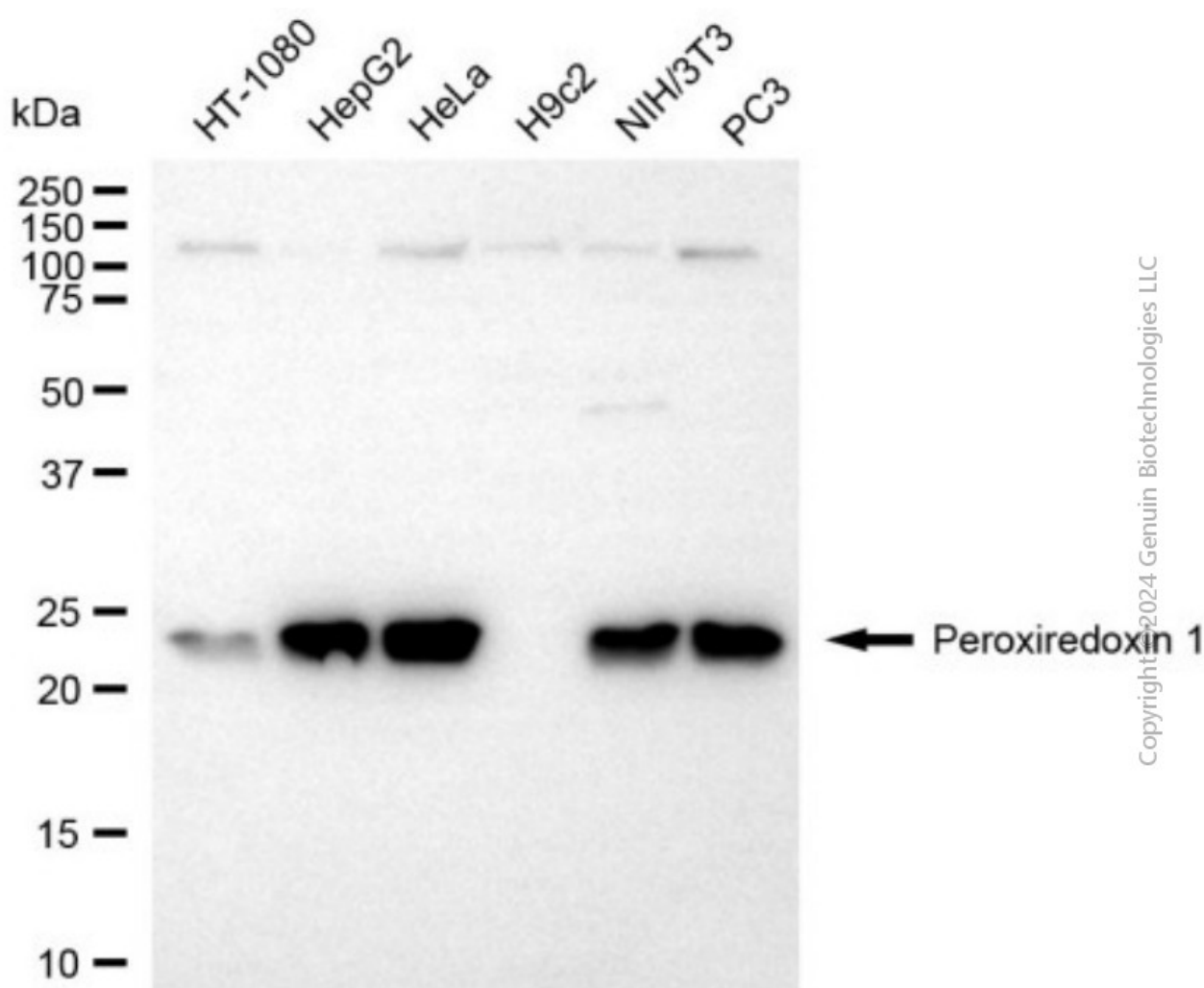
### ORDERS

SALES@GENUINBIOTECH.COM  
FAX: +1-540-855-7041

[WWW.GENUINBIOTECH.COM](http://WWW.GENUINBIOTECH.COM)



Immunocytochemical staining of HepG2 cells with anti-Peroxiredoxin 1 antibody (Cat#4280, 1:1,000). Nuclei were stained blue with DAPI; Peroxiredoxin 1 was stained magenta with Alexa Fluor® 647. Images were taken using Leica stellaris 5. Protein abundance based on laser Intensity and smart gain: High. Scale bar, 20  $\mu$ m.



Western blotting analysis using anti-peroxiredoxin 1 antibody (Cat#4280). Total cell lysates (30

## **Anti-Peroxiredoxin 1 Recombinant Rabbit Monoclonal Antibody**

PAGE 4

μg) from various cell lines were loaded and separated by SDS-PAGE. The blot was incubated with anti-peroxiredoxin 1 antibody (Cat#4280, 1:5,000) and HRP-conjugated goat anti-rabbit secondary antibody (Cat#201, 1:20,000) respectively. Image was developed using NaQ™ ECL Substrate Kit (Cat#716).

---

### **SUPPORT**

SUPPORT@GENUINBIOTECH.COM  
TEL: +1-540-855-7041

### **ORDERS**

SALES@GENUINBIOTECH.COM  
FAX: +1-540-855-7041

**WWW.GENUINBIOTECH.COM**