

Anti-KMT6 / EZH2 Rabbit Recombinant Rabbit Monoclonal Antibody



Catalog #: 4283

Aliases

EZH2; Enhancer Of Zeste 2 Polycomb Repressive Complex 2 Subunit; ENX-1; KMT6; KMT6A; Histone-Lysine N-Methyltransferase EZH2; Lysine N-Methyltransferase 6; Enhancer Of Zeste Homolog 2; EZH1; Enhancer Of Zeste (Drosophila) Homolog 2; Enhancer Of Zeste Homolog 2 (Drosophila); EC 2.1.1.356; EC 2.1.1.43; EC 2.1.1; EZH2b; ENX1; WVS2; WVS

Background

Gene Name: EZH2

NCBI Gene Entry: [2146](#)

UniProt Entry: [Q15910](#)

Application Information

Molecular Weight: Predicted, 85 kDa; observed, 98 kDa

Clonality: Rabbit monoclonal antibody

Clone ID: 24GB10445

Species Reactivity: Human, mouse, rat

Applications Tested: Western blotting (WB), immunocytochemistry (IC), flow cytometry (FCM)

Immunogen

A synthesized peptide derived from human KMT6

Isotype

Rabbit IgG

Storage Buffer

Supplied in PBS (pH 7.4) containing 50% glycerol, and 0.02% sodium azide.

Storage

Store at -20 °C for one year.

Recommended Dilutions

Western Blotting (WB): 1:500-1:2,500

Immunocytochemistry (IC): 1:100-1:1,000

Flow Cytometry (FCM): 1:2,000

SUPPORT

SUPPORT@GENUINBIOTECH.COM
TEL: +1-540-855-7041

ORDERS

SALES@GENUINBIOTECH.COM
FAX: +1-540-855-7041

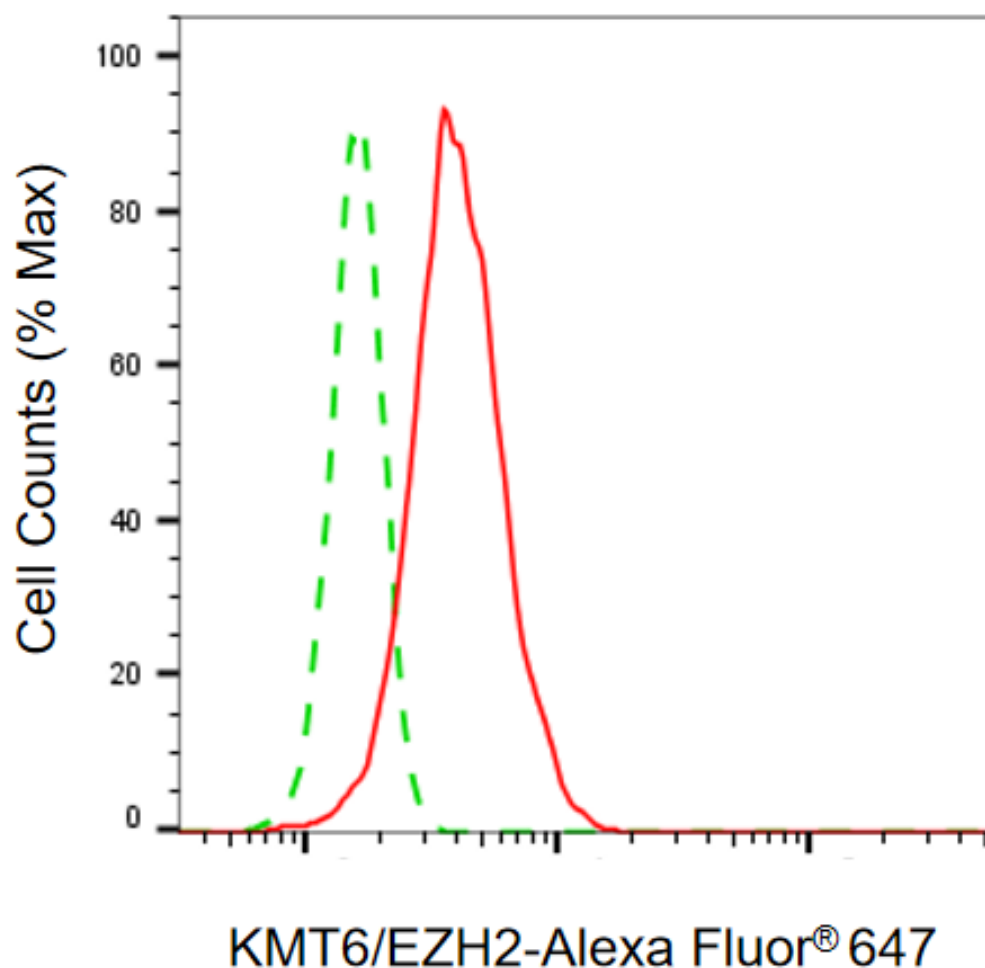
WWW.GENUINBIOTECH.COM

Anti-KMT6 / EZH2 Rabbit Recombinant Rabbit Monoclonal Antibody

PAGE 2

Note: This product is for research use only.

Validation Data



Copyright ©2025 Genuin Biotechnologies LLC

Flow cytometric analysis of KMT6/EZH2 expression in HepG2 cells using anti-KMT6/EZH2 antibody (Cat#4283, 1:2,000). Green, isotype control; red, KMT6/EZH2.

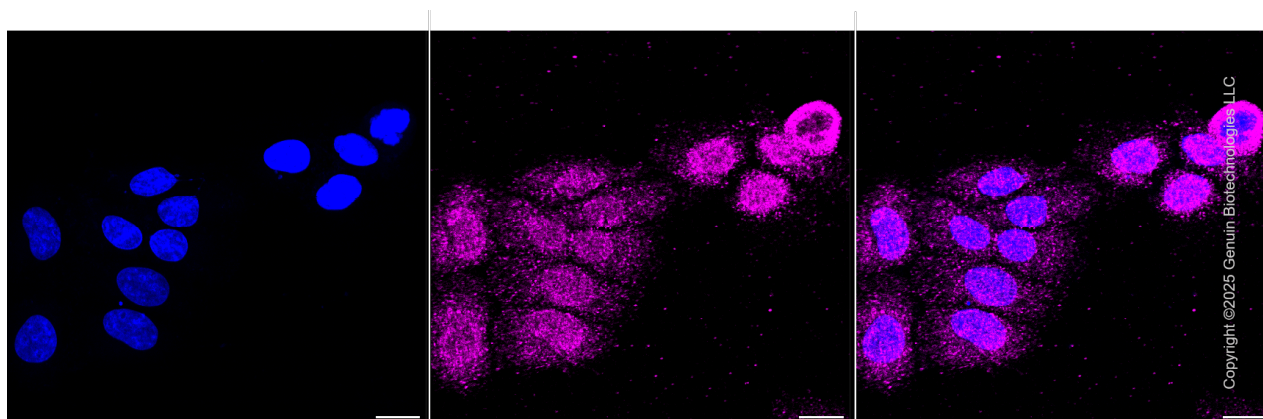
SUPPORT

SUPPORT@GENUINBIOTECH.COM
TEL: +1-540-855-7041

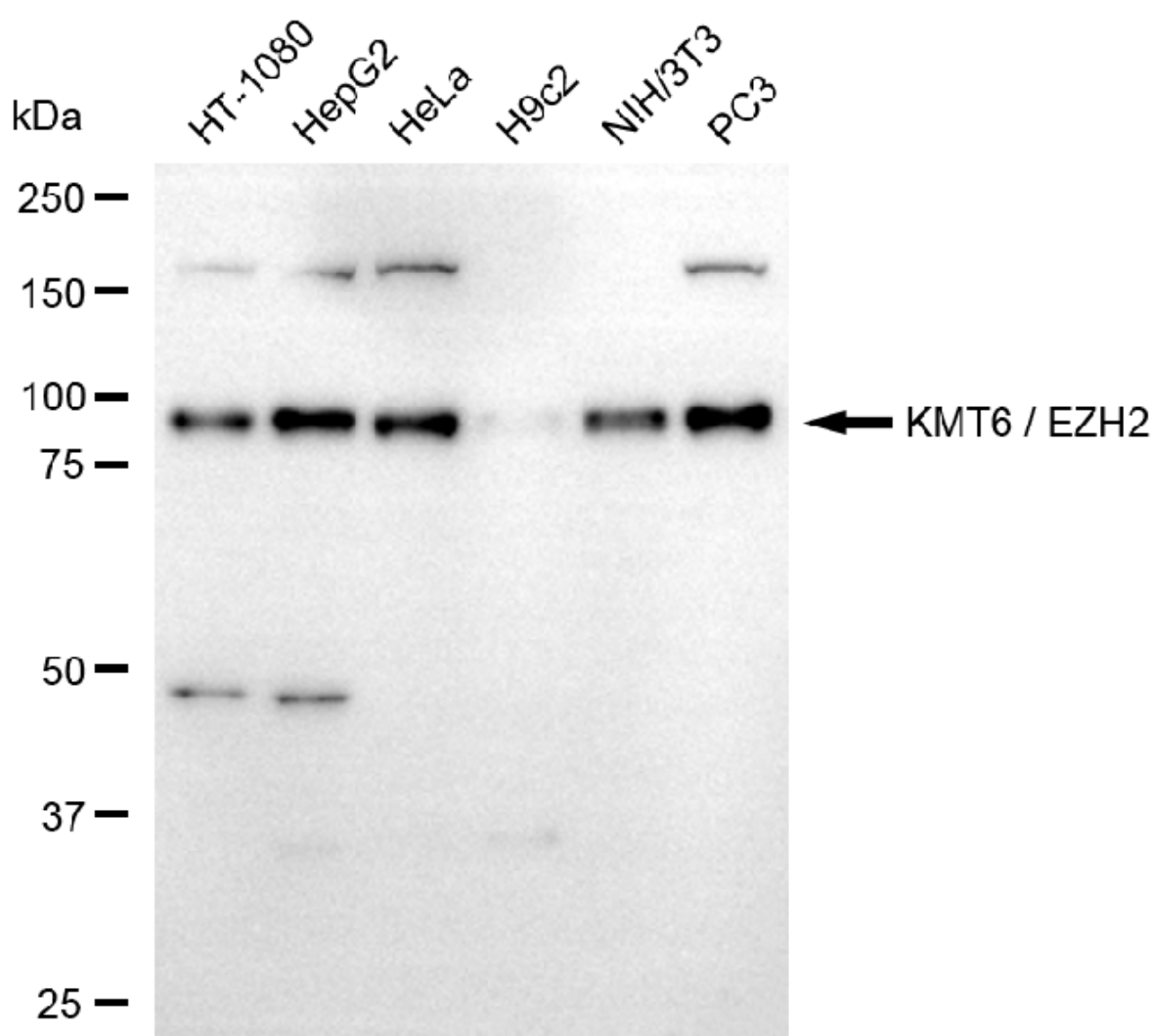
ORDERS

SALES@GENUINBIOTECH.COM
FAX: +1-540-855-7041

WWW.GENUINBIOTECH.COM



Immunocytochemical staining of HepG2 cells with anti-KMT6 / EZH2 antibody (Cat#4283, 1:1,000) . Nuclei were stained blue with DAPI; KMT6 / EZH2 was stained magenta with Alexa Fluor® 647. Images were taken using Leica stellaris 5. Protein abundance based on laser Intensity and smart gain: Low. Scale bar, 20 μ m.



Western blotting analysis using anti-KMT6/EZH2 antibody (Cat#4283). Total cell lysates (30 μ g)

SUPPORT

SUPPORT@GENUINBIOTECH.COM
TEL: +1-540-855-7041

ORDERS

SALES@GENUINBIOTECH.COM
FAX: +1-540-855-7041

WWW.GENUINBIOTECH.COM

Anti-KMT6 / EZH2 Rabbit Recombinant Rabbit Monoclonal Antibody

PAGE 4

from various cell lines were loaded and separated by SDS-PAGE. The blot was incubated with anti-KMT6/EZH2 antibody (Cat#4283, 1:2,500) and HRP-conjugated goat anti-rabbit secondary antibody (Cat#201, 1:20,000) respectively. Image was developed using FeQ™ ECL Substrate Kit (Cat#226).

SUPPORT

SUPPORT@GENUINBIOTECH.COM
TEL: +1-540-855-7041

ORDERS

SALES@GENUINBIOTECH.COM
FAX: +1-540-855-7041

WWW.GENUINBIOTECH.COM