

Anti-TGF beta 1 Recombinant Rabbit Monoclonal Antibody



Catalog #: 4284

Aliases

TGFB1; Transforming Growth Factor Beta 1; TGFB; CED; Transforming Growth Factor Beta-1 Proprotein; Prepro-Transforming Growth Factor Beta-1; TGFbeta; DPD1; Diaphyseal Dysplasia 1, Progressive; Transforming Growth Factor, Beta 1; Transforming Growth Factor Beta 1; Camurati-Engelmann Disease; Latency-Associated Peptide; TGF-Beta-1; TGF-Beta1; IBDIMDE; TGFBETA; LAP

Background

Gene Name: TGFB1

NCBI Gene Entry: [7040](#)

UniProt Entry: [P01137](#)

Application Information

Molecular Weight: Predicted, 44 kDa; observed, 48 kDa

Clonality: Rabbit monoclonal antibody

Clone ID: 24GB10450

Species Reactivity: Human, mouse, rat

Applications Tested: Western blotting (WB), flow cytometry (FCM), immunocytochemistry (IC)

Immunogen

A synthesized peptide derived from human TGF beta 1

Isotype

Rabbit IgG

Storage Buffer

Supplied in PBS (pH 7.4) containing 50% glycerol, and 0.02% sodium azide.

Storage

Store at -20 °C for one year.

Recommended Dilutions

Western Blotting (WB): 1:1,000-1:5,000

Flow Cytometry (FCM): 1:2,000

Immunocytochemistry (IC): 1:100-1:1,000

SUPPORT

SUPPORT@GENUINBIOTECH.COM
TEL: +1-540-855-7041

ORDERS

SALES@GENUINBIOTECH.COM
FAX: +1-540-855-7041

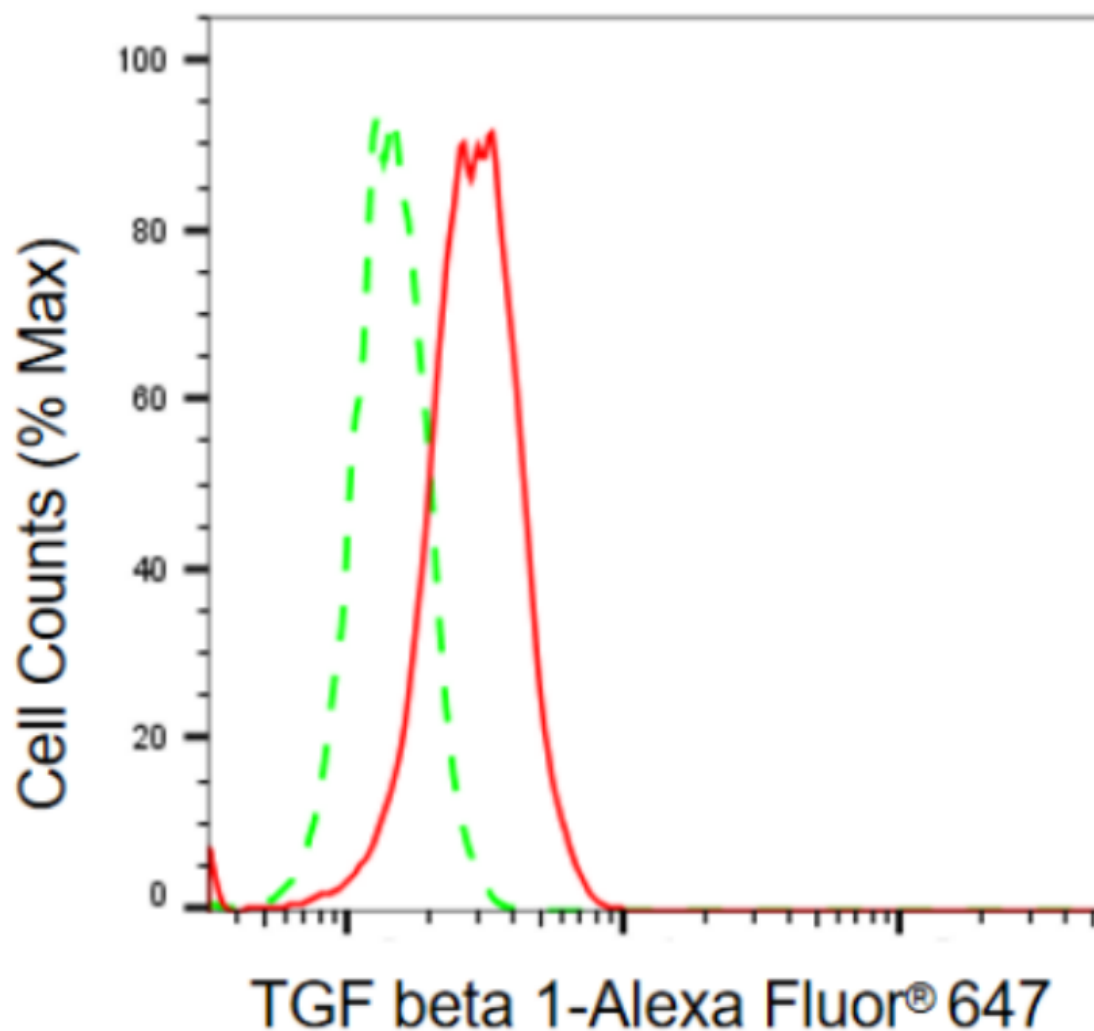
WWW.GENUINBIOTECH.COM

Anti-TGF beta 1 Recombinant Rabbit Monoclonal Antibody

PAGE 2

Note: This product is for research use only.

Validation Data



Copyright ©2024 Genuin Biotechnologies LLC

Flow cytometric analysis of TGF beta 1 expression in H9c2 cells using anti-TGF beta 1 antibody (Cat#4284, 1:2,000). Green, isotype control; red, TGF beta 1.

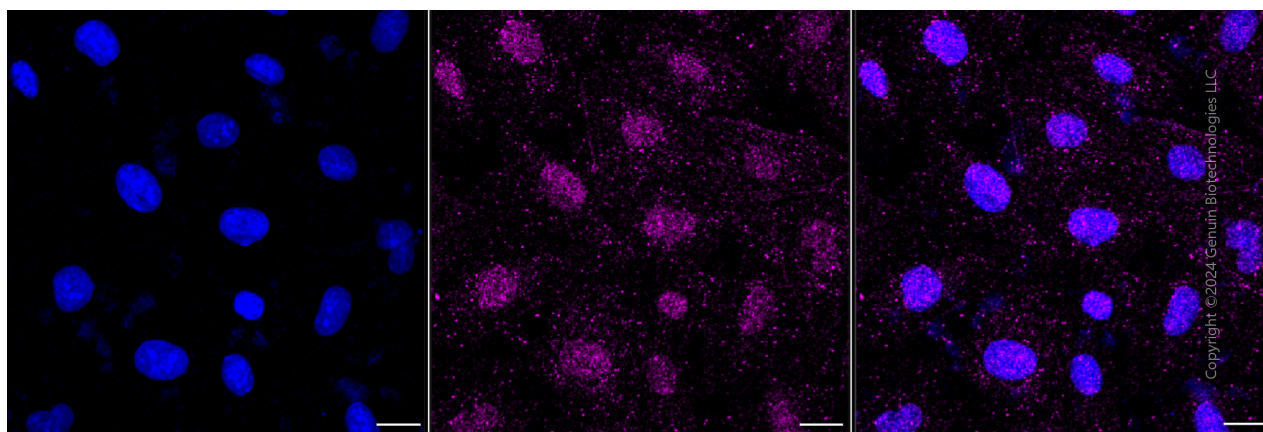
SUPPORT

SUPPORT@GENUINBIOTECH.COM
TEL: +1-540-855-7041

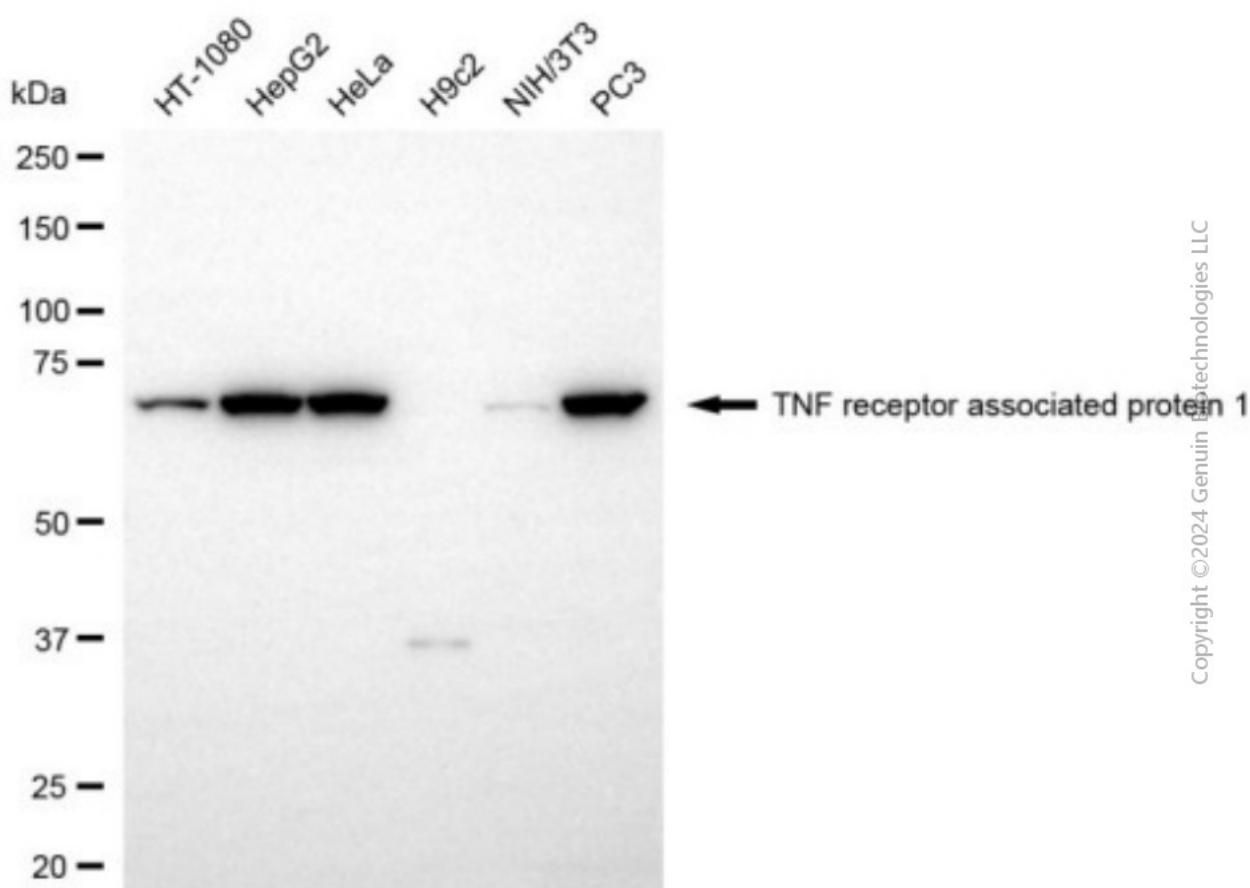
ORDERS

SALES@GENUINBIOTECH.COM
FAX: +1-540-855-7041

WWW.GENUINBIOTECH.COM



Immunocytochemical staining of H9c2 cells with anti-TGF beta 1 antibody (Cat#4284, 1:1,000). Nuclei were stained blue with DAPI; TGF beta 1 was stained magenta with Alexa Fluor® 647. Images were taken using Leica stellaris 5. Protein abundance based on laser Intensity and smart gain: Low. Scale bar, 20 μ m.



Western blotting analysis using anti-TGF beta 1 antibody (Cat#4284). Total cell lysates (30 μ g) from various cell lines were loaded and separated by SDS-PAGE. The blot was incubated with anti- antibody (Cat#4284, 1:5,000) and HRP-conjugated goat anti-rabbit secondary antibody (Cat#201, 1:20,000) respectively. Image was developed using FeQ™ ECL Substrate Kit

Anti-TGF beta 1 Recombinant Rabbit Monoclonal Antibody

PAGE 4

(Cat#226).

SUPPORT

SUPPORT@GENUINBIOTECH.COM
TEL: +1-540-855-7041

ORDERS

SALES@GENUINBIOTECH.COM
FAX:+1-540-855-7041

WWW.GENUINBIOTECH.COM