

# Anti-CTCF Recombinant Rabbit Monoclonal Antibody



**Catalog #: 4306**

## Aliases

CTCF; CCCTC-Binding Factor; CFAP108; FAP108; CCCTC-Binding Factor (Zinc Finger Protein); 11 Zinc Finger Transcriptional Repressor; Transcriptional Repressor CTCF; 11-Zinc Finger Protein; CTCFL Paralog; MRD21

## Background

Gene Name: CTCF

NCBI Gene Entry: [10664](#)

UniProt Entry: [P49711](#)

## Application Information

Molecular Weight: Predicted, 83 kDa; observed, 140 kDa

Clonality: Rabbit monoclonal antibody

Clone ID: 24GB10560

Species Reactivity: Human, mouse, rat

Applications Tested: Western blotting (WB), flow cytometry (FCM), immunocytochemistry (IC)

## Immunogen

A synthesized peptide derived from human CTCF

## Isotype

Rabbit IgG

## Storage Buffer

Supplied in PBS (pH 7.4) containing 50% glycerol, and 0.02% sodium azide.

## Storage

Store at -20 °C for one year.

## Recommended Dilutions

Western Blotting (WB): 1:1,000-1:5,000

Flow Cytometry (FCM): 1:2,000

Immunocytochemistry (IC): 1:100-1:1,000

**Note:** This product is for research use only.

---

### SUPPORT

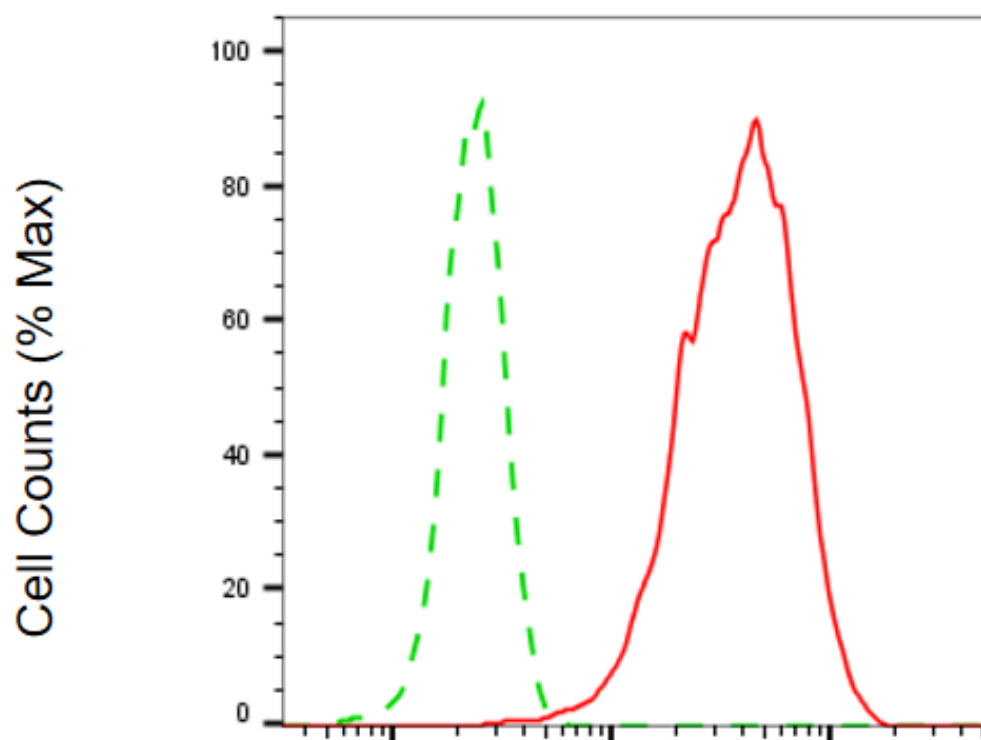
SUPPORT@GENUINBIOTECH.COM  
TEL: +1-540-855-7041

### ORDERS

SALES@GENUINBIOTECH.COM  
FAX: +1-540-855-7041

[WWW.GENUINBIOTECH.COM](http://WWW.GENUINBIOTECH.COM)

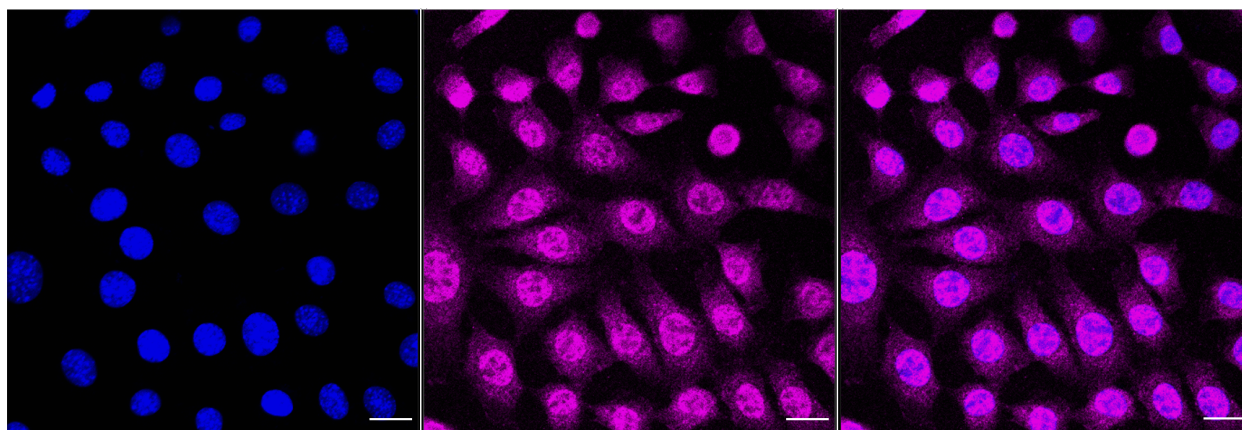
**Validation Data**



Copyright ©2025 Genuin Biotechnologies LLC

**CTCF-Alexa Fluor® 647**

Flow cytometric analysis of CTCF expression in C2C12 cells using anti-CTCF antibody (Cat#4306, 1:2,000). Green, isotype control; red, CTCF.



Immunocytochemical staining of C2C12 cells with anti-CTCF antibody (Cat#4306, 1:1,000) . Nuclei were stained blue with DAPI; CTCF was stained magenta with Alexa Fluor® 647. Images were taken using Leica stellaris 5. Protein abundance based on laser Intensity and smart gain:

**SUPPORT**

SUPPORT@GENUINBIOTECH.COM  
TEL: +1-540-855-7041

**ORDERS**

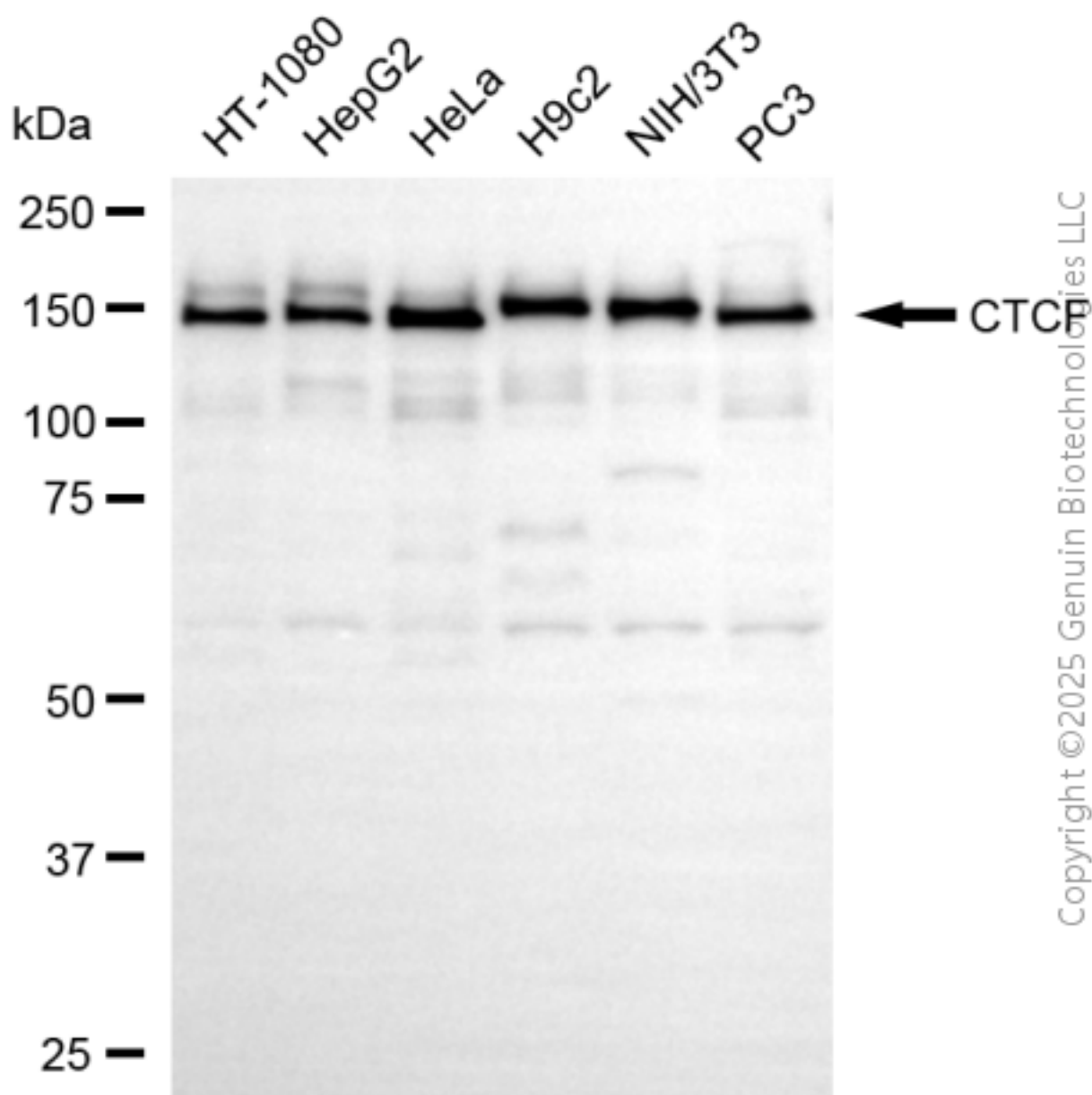
SALES@GENUINBIOTECH.COM  
FAX: +1-540-855-7041

**WWW.GENUINBIOTECH.COM**

## Anti-CTCF Recombinant Rabbit Monoclonal Antibody

PAGE 3

Medium. Scale bar, 20  $\mu$ m.



Western blotting analysis using anti-CTCF antibody (Cat#4306). Total cell lysates (30  $\mu$ g) from various cell lines were loaded and separated by SDS-PAGE. The blot was incubated with anti-CTCF antibody (Cat#4306, 1:5,000) and HRP-conjugated goat anti-rabbit secondary antibody (Cat#201, 1:20,000) respectively. Image was developed using NaQ™ ECL Substrate Kit (Cat#716).

### SUPPORT

SUPPORT@GENUINBIOTECH.COM  
TEL: +1-540-855-7041

### ORDERS

SALES@GENUINBIOTECH.COM  
FAX: +1-540-855-7041

WWW.GENUINBIOTECH.COM