

Anti-SMC3 Recombinant Rabbit Monoclonal Antibody



Catalog #: 4308

Aliases

SMC3; Structural Maintenance Of Chromosomes 3; SMC3L1; HCA; BAM; Bamacan; CSPG6; Basement Membrane-Associated Chondroitin Proteoglycan; Structural Maintenance Of Chromosomes Protein 3; Chondroitin Sulfate Proteoglycan 6 (Bamacan); Chromosome-Associated Polypeptide; SMC Protein 3; BMH; Chondroitin Sulfate Proteoglycan 6; Bamacan Proteoglycan; CDLS3; SMC-3

Background

Gene Name: SMC3

NCBI Gene Entry: [9126](#)

UniProt Entry: [Q9UQE7](#)

Application Information

Molecular Weight: Predicted, 142 kDa; observed, 141 kDa

Clonality: Rabbit monoclonal antibody

Clone ID: 24GB10570

Species Reactivity: Human, mouse, rat

Applications Tested: Western blotting (WB), flow cytometry (FCM), immunocytochemistry (IC)

Immunogen

A synthesized peptide derived from human SMC3

Isotype

Rabbit IgG

Storage Buffer

Supplied in PBS (pH 7.4) containing 50% glycerol, and 0.02% sodium azide.

Storage

Store at -20 °C for one year.

Recommended Dilutions

Western Blotting (WB): 1:1,000-1:5,000

Flow Cytometry (FCM): 1:2,000

Immunocytochemistry (IC): 1:100-1:1,000

SUPPORT

SUPPORT@GENUINBIOTECH.COM
TEL: +1-540-855-7041

ORDERS

SALES@GENUINBIOTECH.COM
FAX: +1-540-855-7041

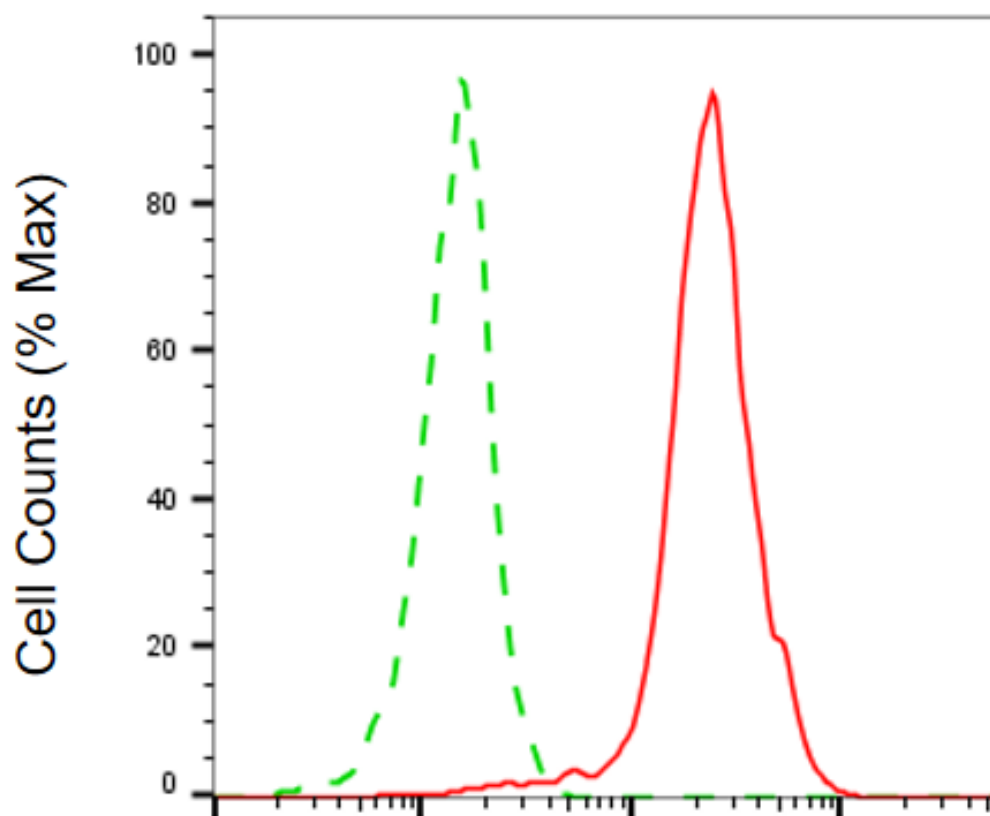
WWW.GENUINBIOTECH.COM

Anti-SMC3 Recombinant Rabbit Monoclonal Antibody

PAGE 2

Note: This product is for research use only.

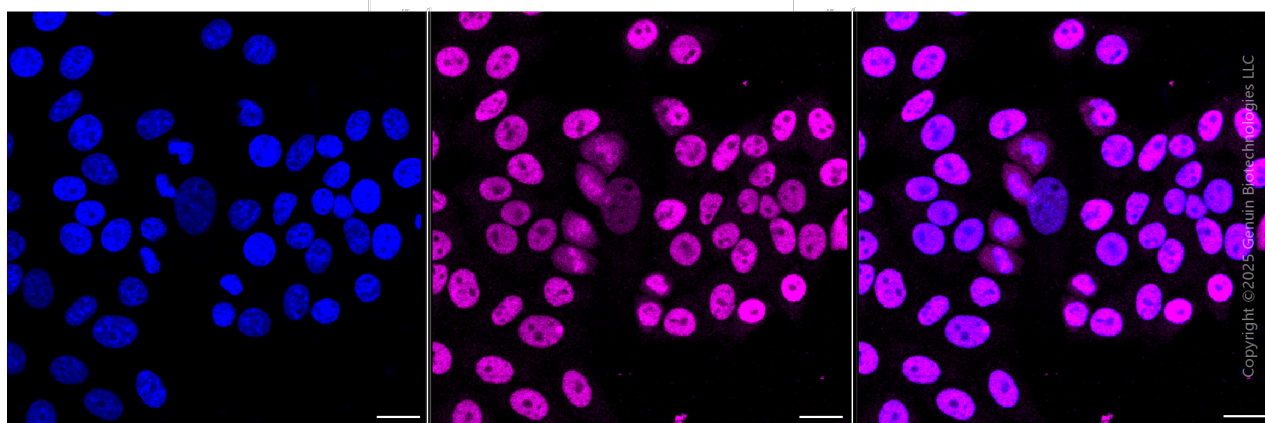
Validation Data



Copyright ©2025 Genuin Biotechnologies LLC

SMC3-Alexa Fluor® 647

Flow cytometric analysis of SMC3 expression in HepG2 cells using anti-SMC3 antibody (Cat#4308, 1:2,000). Green, isotype control; red, SMC3.



Copyright ©2025 Genuin Biotechnologies LLC

SUPPORT

SUPPORT@GENUINBIOTECH.COM
TEL: +1-540-855-7041

ORDERS

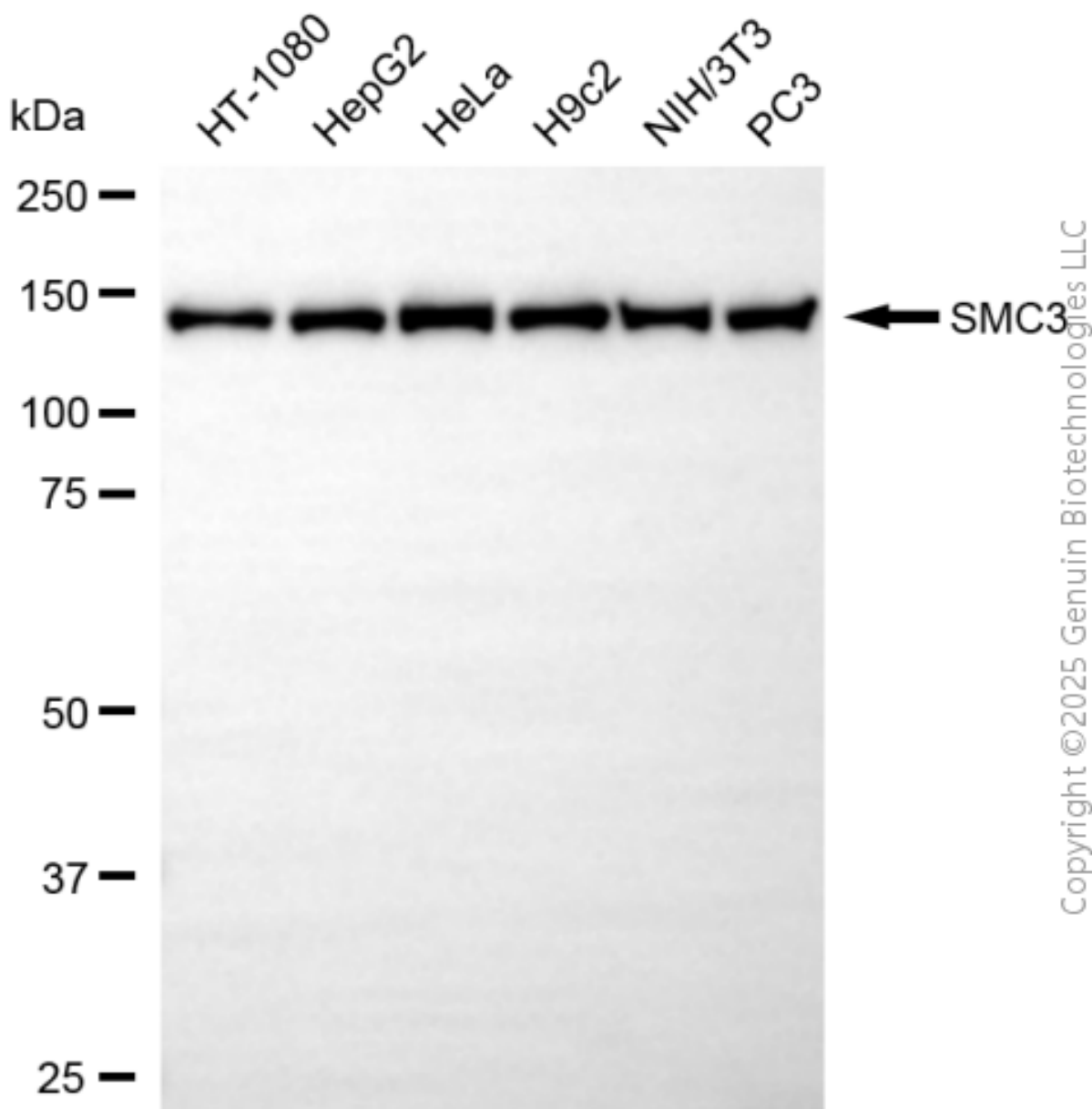
SALES@GENUINBIOTECH.COM
FAX: +1-540-855-7041

WWW.GENUINBIOTECH.COM

Anti-SMC3 Recombinant Rabbit Monoclonal Antibody

PAGE 3

Immunocytochemical staining of HepG2 cells with anti-SMC3 antibody (Cat#4308, 1:1,000). Nuclei were stained blue with DAPI; SMC3 was stained magenta with Alexa Fluor® 647. Images were taken using Leica stellaris 5. Protein abundance based on laser Intensity and smart gain: Medium. Scale bar, 20 µm.



Western blotting analysis using anti-SMC3 antibody (Cat#4308). Total cell lysates (30 µg) from various cell lines were loaded and separated by SDS-PAGE. The blot was incubated with anti-SMC3 antibody (Cat#4308, 1:5,000) and HRP-conjugated goat anti-rabbit secondary antibody (Cat#201, 1:20,000) respectively. Image was developed using NaQ™ ECL Substrate Kit (Cat#716).

SUPPORT

SUPPORT@GENUINBIOTECH.COM
TEL: +1-540-855-7041

ORDERS

SALES@GENUINBIOTECH.COM
FAX: +1-540-855-7041

WWW.GENUINBIOTECH.COM