

Anti-Aquaporin 1 Recombinant Rabbit Monoclonal Antibody



Catalog #: 4311

Aliases

AQP1; Aquaporin 1 (Colton Blood Group); CHIP28; Aquaporin 1 (Channel-Forming Integral Protein, 28kDa, CO Blood Group); Water Channel Protein For Red Blood Cells And Kidney Proximal Tubule; Urine Water Channel; Aquaporin-CHIP; Aquaporin-1; CO; Aquaporin 1 (Channel-Forming Integral Protein, 28kDa); Channel-Like Integral Membrane Protein, 28-KDa; Aquaporin 1, Colton Blood Group Antigen; Colton Blood Group Antigen; Bloodgroup CO Protein; Colton Blood Group; Aquaporin 1; AQP-CHIP; AQP-1

Background

Gene Name: AQP1

NCBI Gene Entry: [358](#)

UniProt Entry: [P29972](#)

Application Information

Molecular Weight: Predicted, 29 kDa; observed, 28,35-50 kDa

Clonality: Rabbit monoclonal antibody

Clone ID: 24GB10585

Species Reactivity: Human, mouse, rat

Applications Tested: Western blotting (WB), flow cytometry (FCM), immunocytochemistry (IC)

Immunogen

A synthesized peptide derived from human AQP1

Isotype

Rabbit IgG

Storage Buffer

Supplied in PBS (pH 7.4) containing 50% glycerol, and 0.02% sodium azide.

Storage

Store at -20 °C for one year.

Recommended Dilutions

Western Blotting (WB): 1:1,000-1:5,000

Flow Cytometry (FCM): 1:2,000

Immunocytochemistry (IC): 1:100-1:1,000

SUPPORT

SUPPORT@GENUINBIOTECH.COM
TEL: +1-540-855-7041

ORDERS

SALES@GENUINBIOTECH.COM
FAX: +1-540-855-7041

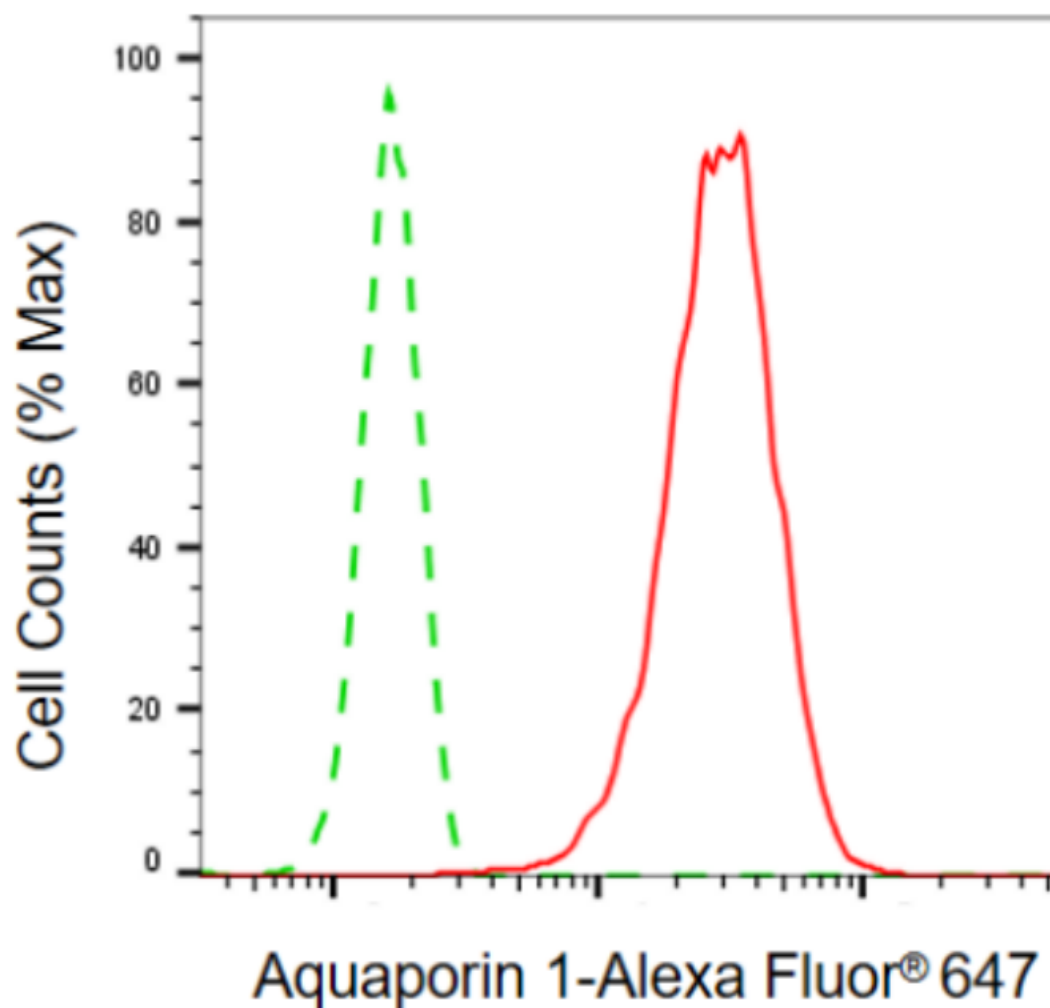
WWW.GENUINBIOTECH.COM

Anti-Aquaporin 1 Recombinant Rabbit Monoclonal Antibody

PAGE 2

Note: This product is for research use only.

Validation Data



Copyright ©2024 Genuin Biotechnologies LLC

Flow cytometric analysis of aquaporin 1 expression in C2C12 cells using anti-aquaporin 1 antibody (Cat#4311, 1:2,000). Green, isotype control; red, aquaporin 1.

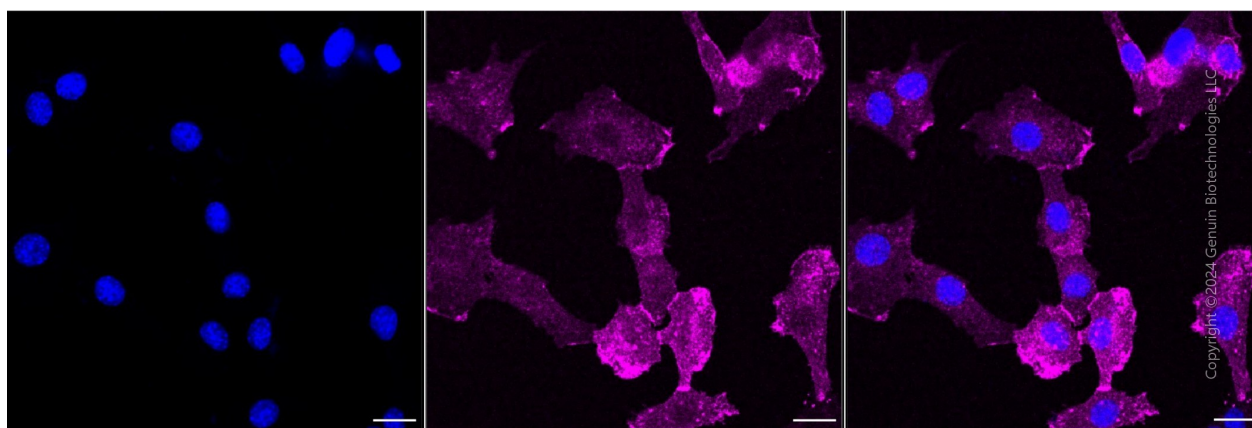
SUPPORT

SUPPORT@GENUINBIOTECH.COM
TEL: +1-540-855-7041

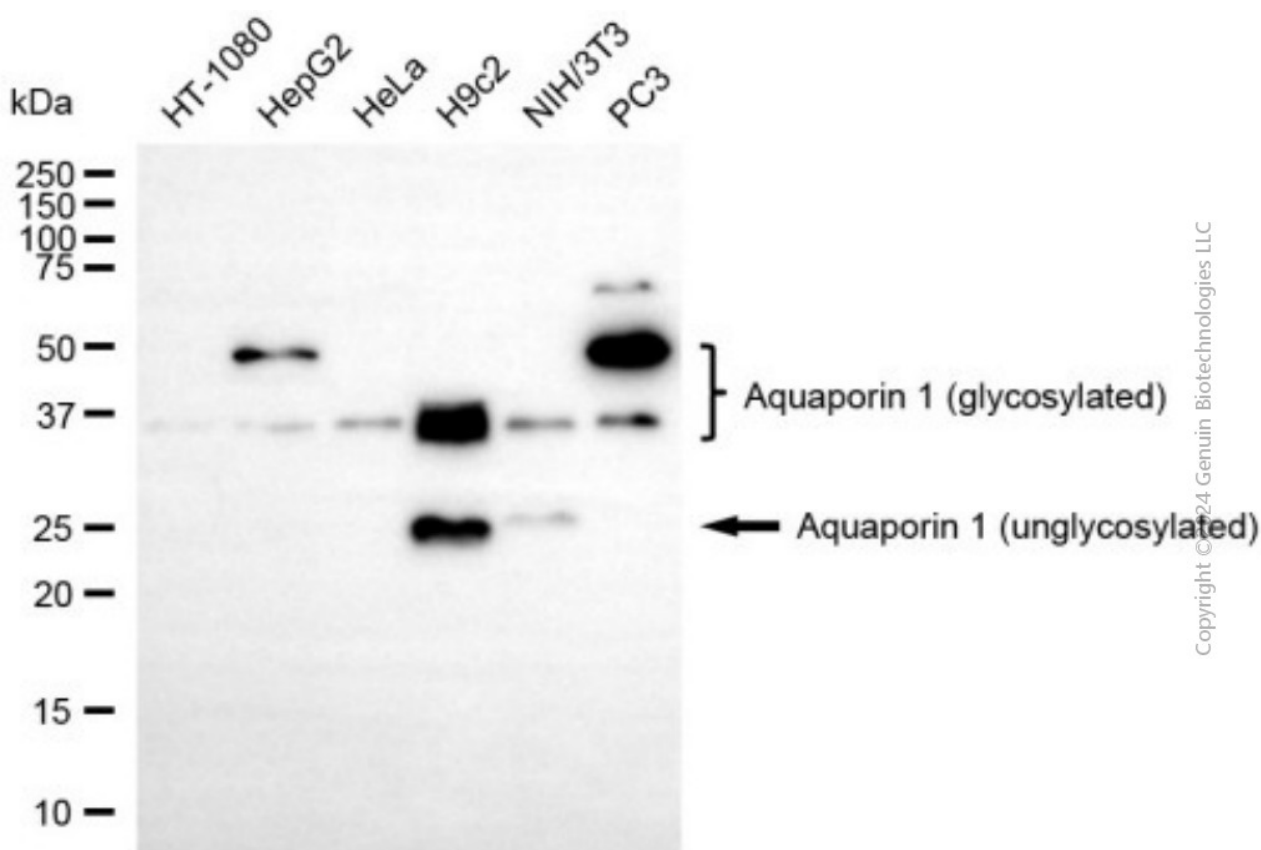
ORDERS

SALES@GENUINBIOTECH.COM
FAX: +1-540-855-7041

WWW.GENUINBIOTECH.COM



Immunocytochemical staining of C2C12 cells with anti-Aquaporin 1 antibody (Cat#4311, 1:1,000). Nuclei were stained blue with DAPI; Aquaporin 1 was stained magenta with Alexa Fluor® 647. Images were taken using Leica stellaris 5. Protein abundance based on laser Intensity and smart gain: Medium. Scale bar, 20 µm.



Western blotting analysis using anti-aquaporin 1 antibody (Cat#4311). Total cell lysates (30 µg) from various cell lines were loaded and separated by SDS-PAGE. The blot was incubated with anti-aquaporin 1 antibody (Cat#4311, 1:5,000) and HRP-conjugated goat anti-rabbit secondary antibody (Cat#201, 1:20,000) respectively. Image was developed using NaQ™ ECL Substrate Kit (Cat#716).