

Anti-Cathepsin B Recombinant Rabbit Monoclonal Antibody



Catalog #: 4313

Aliases

CTSB; Cathepsin B; APP Secretase; Cathepsin B1; EC 3.4.22.1; APPS; CPSB; Keratolytic Winter Erythema (Oudtshoorn Skin Disease); Epididymis Secretory Sperm Binding Protein; Amyloid Precursor Protein Secretase; Cysteine Protease; EC 3.4.22; RECEUP; KWE

Background

Gene Name: CTSB

NCBI Gene Entry: [1508](#)

UniProt Entry: [P07858](#)

Application Information

Molecular Weight: Predicted, 38 kDa; observed, 38 kDa

Clonality: Rabbit monoclonal antibody

Clone ID: 24GB10595

Species Reactivity: Human

Applications Tested: Western blotting (WB), immunocytochemistry (IC)

Immunogen

A synthesized peptide derived from human Cathepsin B

Isotype

Rabbit IgG

Storage Buffer

Supplied in PBS (pH 7.4) containing 50% glycerol, and 0.02% sodium azide.

Storage

Store at -20 °C for one year.

Recommended Dilutions

Western Blotting (WB): 1:1,000-1:5,000

Immunocytochemistry (IC): 1:100-1:1,000

Note: This product is for research use only.

Validation Data

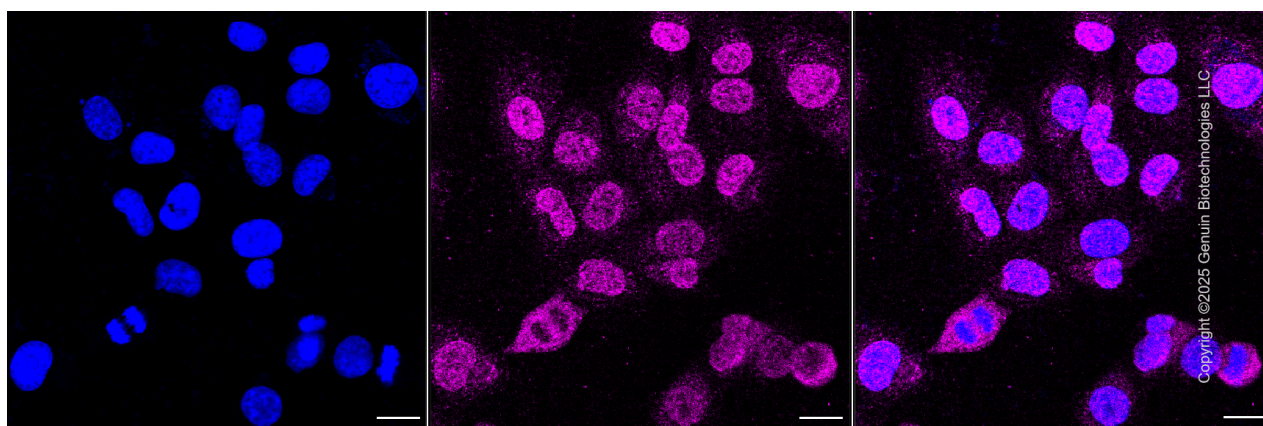
SUPPORT

SUPPORT@GENUINBIOTECH.COM
TEL: +1-540-855-7041

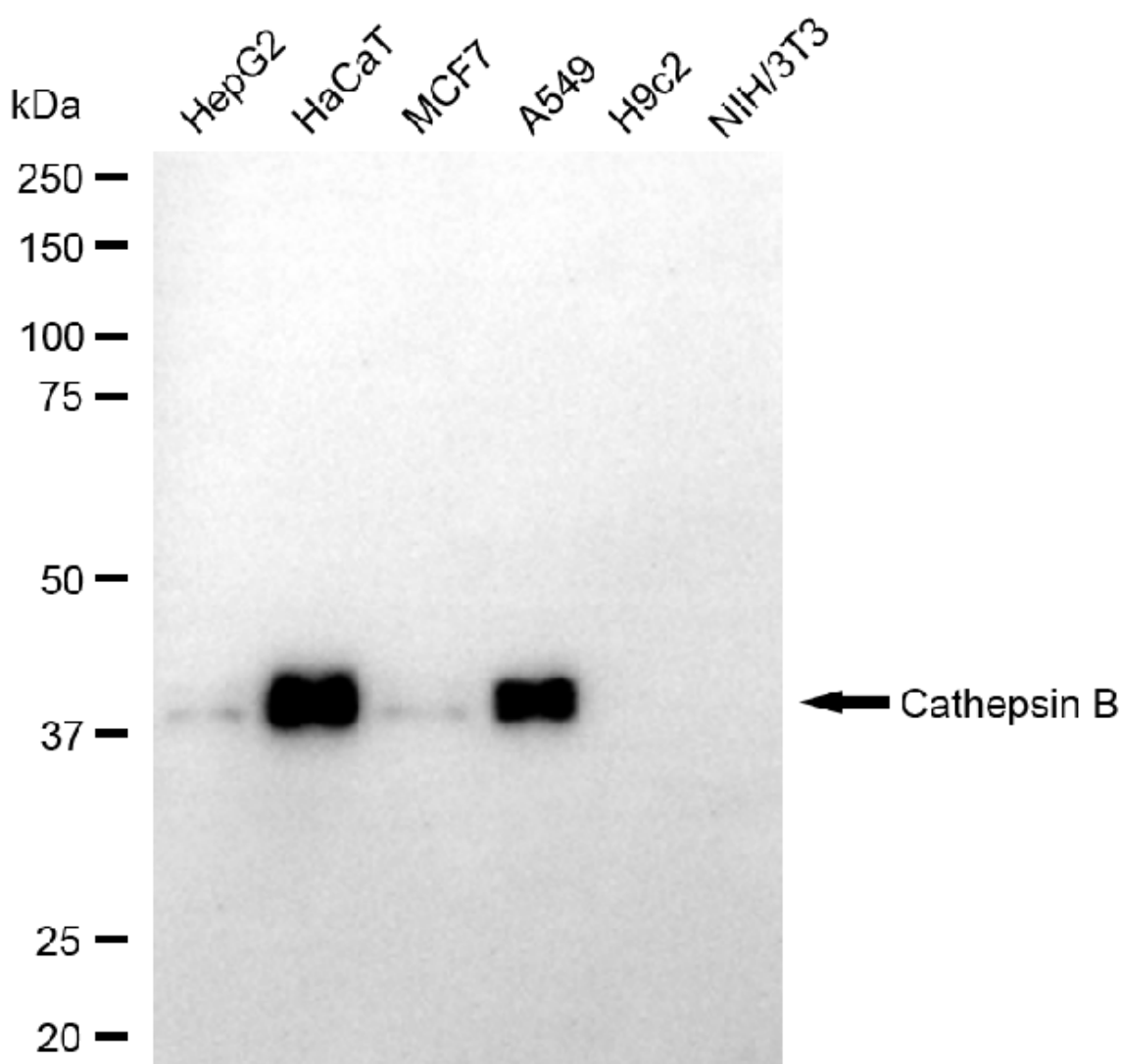
ORDERS

SALES@GENUINBIOTECH.COM
FAX: +1-540-855-7041

WWW.GENUINBIOTECH.COM



Immunocytochemical staining of HepG2 cells with anti-cathepsin B antibody (Cat#4313, 1:1,000) . Nuclei were stained blue with DAPI; Cathepsin B was stained magenta with Alexa Fluor® 647. Images were taken using Leica stellaris 5. Protein abundance based on laser Intensity and smart gain: Medium. Scale bar, 20 μ m.



Copyright ©2025 Genuin Biotechnologies LLC

SUPPORT

SUPPORT@GENUINBIOTECH.COM
TEL: +1-540-855-7041

ORDERS

SALES@GENUINBIOTECH.COM
FAX: +1-540-855-7041

WWW.GENUINBIOTECH.COM

Anti-Cathepsin B Recombinant Rabbit Monoclonal Antibody

PAGE 3

Western blotting analysis using anti-cathepsin B antibody (Cat#4313). Total cell lysates (30 µg) from various cell lines were loaded and separated by SDS-PAGE. The blot was incubated with anti-cathepsin B antibody (Cat#4313, 1:5,000) and HRP-conjugated goat anti-rabbit secondary antibody (Cat#201, 1:20,000) respectively. Image was developed using FeQ™ ECL Substrate Kit (Cat#226).

SUPPORT

SUPPORT@GENUINBIOTECH.COM
TEL: +1-540-855-7041

ORDERS

SALES@GENUINBIOTECH.COM
FAX: +1-540-855-7041

WWW.GENUINBIOTECH.COM