

Anti-TIA1 Recombinant Rabbit Monoclonal Antibody



Catalog #: 4316

Aliases

TIA1; TIA1 Cytotoxic Granule Associated RNA Binding Protein; TIA-1; T-Cell-Restricted Intracellular Antigen-1; Cytotoxic Granule Associated RNA Binding Protein TIA1; Nucleolysin TIA-1 Isoform P40; TIA1 Cytotoxic Granule-Associated RNA-Binding Protein; P40-TIA-1 (Containing P15-TIA-1); RNA-Binding Protein TIA-1; P40-TIA-1; ALS26; WDM

Background

Gene Name: TIA1

NCBI Gene Entry: [7072](#)

UniProt Entry: [P31483](#)

Application Information

Molecular Weight: Predicted, 43 kDa; observed, 43 kDa

Clonality: Rabbit monoclonal antibody

Clone ID: 24GB10610

Species Reactivity: Human, mouse

Applications Tested: Western blotting (WB), flow cytometry (FCM), immunocytochemistry (IC)

Immunogen

A synthesized peptide derived from human TIA1

Isotype

Rabbit IgG

Storage Buffer

Supplied in PBS (pH 7.4) containing 50% glycerol, and 0.02% sodium azide.

Storage

Store at -20 °C for one year.

Recommended Dilutions

Western Blotting (WB): 1:1,000-1:5,000

Flow Cytometry (FCM): 1:2,000

Immunocytochemistry (IC): 1:100-1:1,000

SUPPORT

SUPPORT@GENUINBIOTECH.COM
TEL: +1-540-855-7041

ORDERS

SALES@GENUINBIOTECH.COM
FAX: +1-540-855-7041

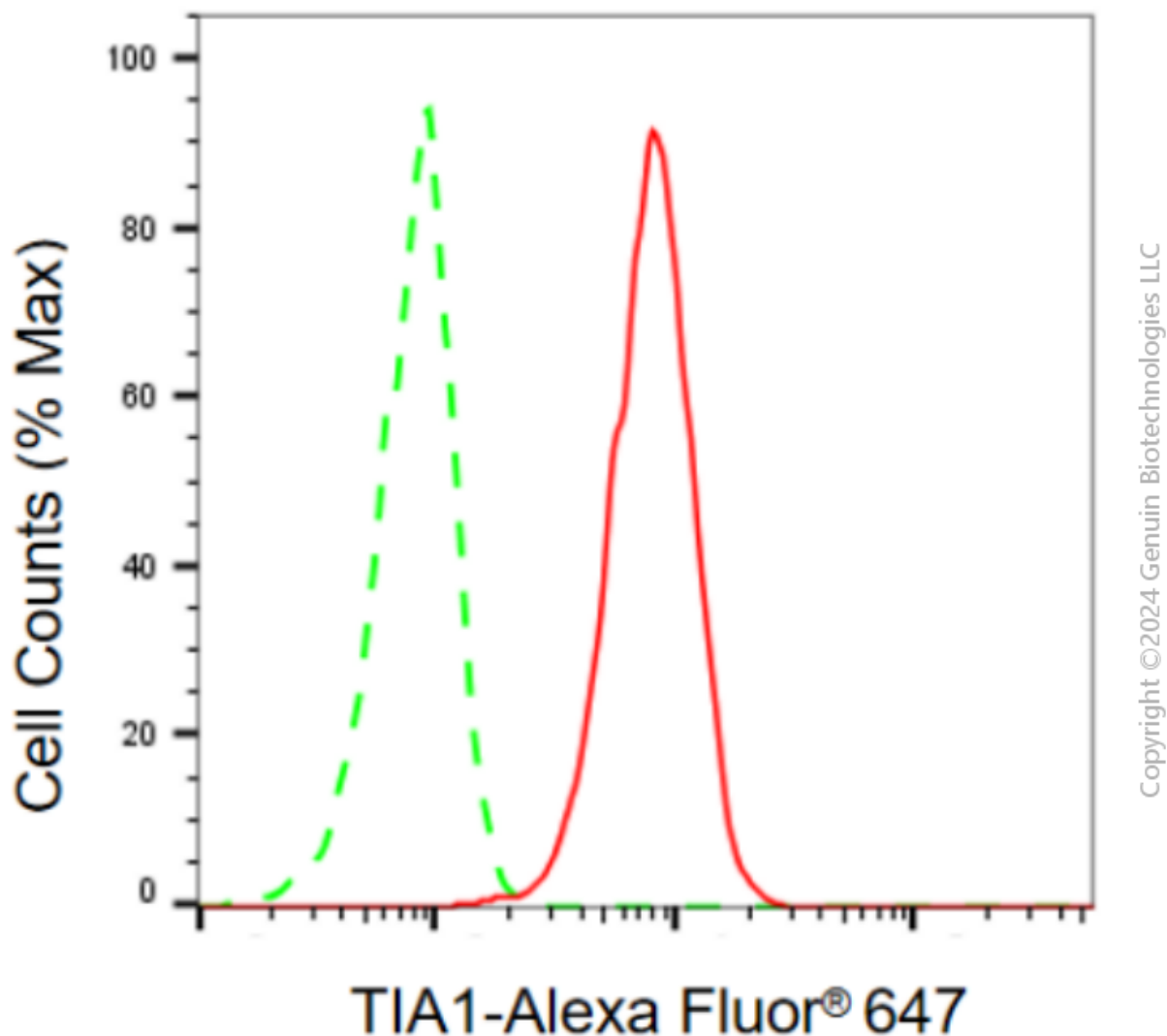
WWW.GENUINBIOTECH.COM

Anti-TIA1 Recombinant Rabbit Monoclonal Antibody

PAGE 2

Note: This product is for research use only.

Validation Data



Flow cytometric analysis of TIA1 expression in HAP-1 cells using anti-TIA1 antibody (Cat#4316, 1:2,000). Green, isotype control; red, TIA1.

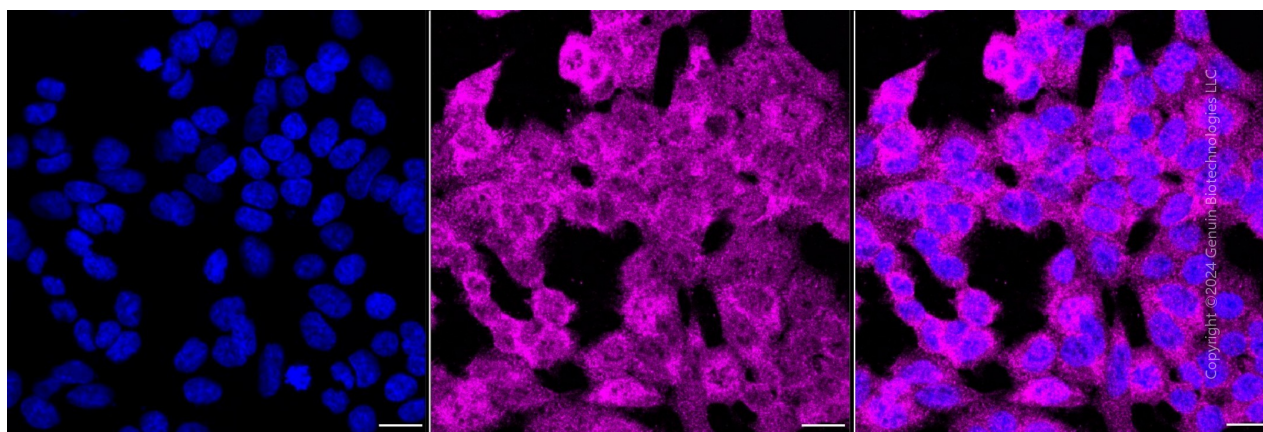
SUPPORT

SUPPORT@GENUINBIOTECH.COM
TEL: +1-540-855-7041

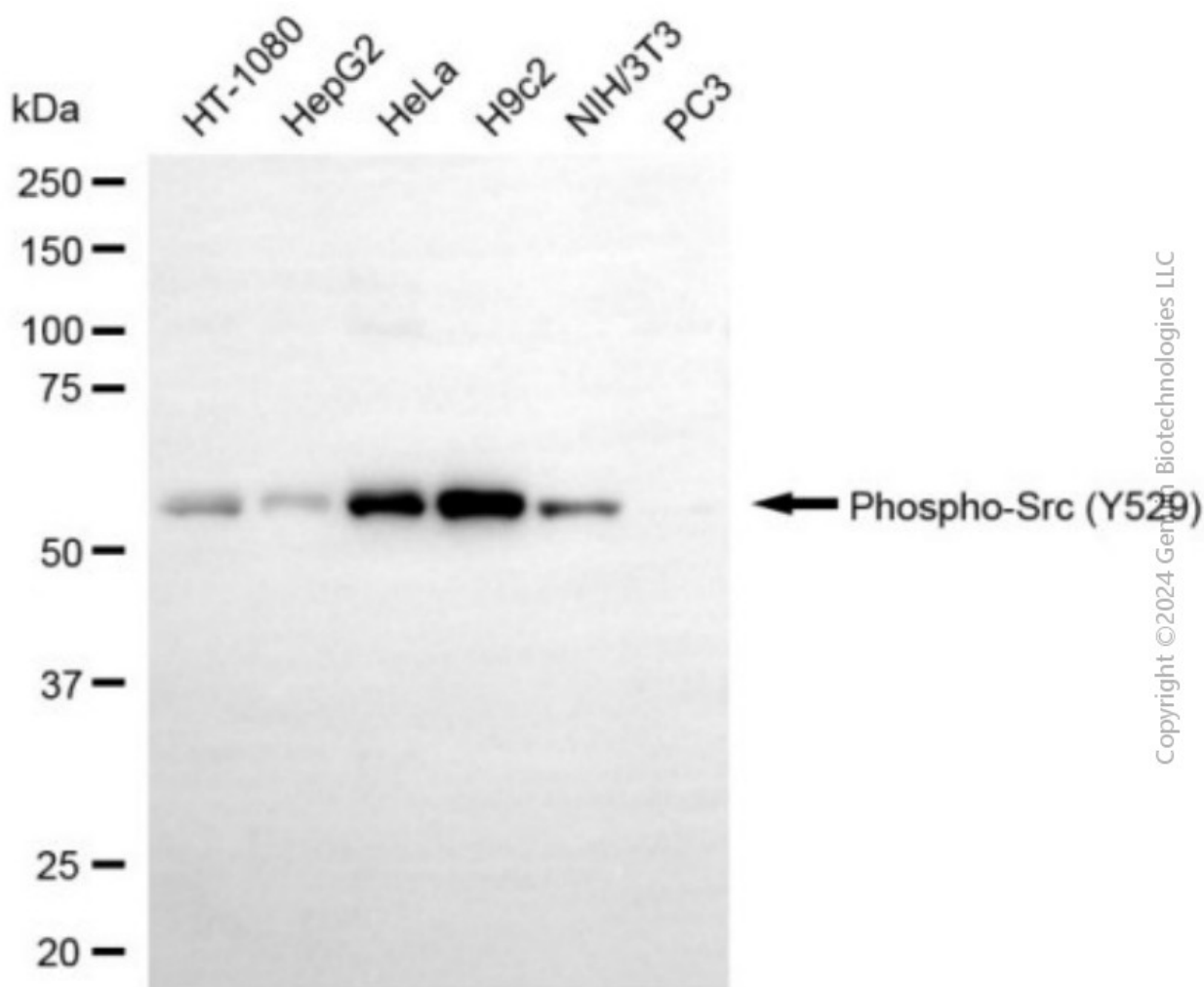
ORDERS

SALES@GENUINBIOTECH.COM
FAX: +1-540-855-7041

WWW.GENUINBIOTECH.COM



Immunocytochemical staining of HAP1 cells with anti-TIA1 antibody (Cat#4316, 1:1,000). Nuclei were stained blue with DAPI; TIA1 was stained magenta with Alexa Fluor® 647. Images were taken using Leica stellaris 5. Protein abundance based on laser Intensity and smart gain: Medium. Scale bar, 20 μ m.



Western blotting analysis using anti-TIA1 antibody (Cat#4316). Total cell lysates (30 μ g) from

SUPPORT

SUPPORT@GENUINBIOTECH.COM
TEL: +1-540-855-7041

ORDERS

SALES@GENUINBIOTECH.COM
FAX: +1-540-855-7041

WWW.GENUINBIOTECH.COM

Anti-TIA1 Recombinant Rabbit Monoclonal Antibody

PAGE 4

various cell lines were loaded and separated by SDS-PAGE. The blot was incubated with anti-TIA1 antibody (Cat#4316, 1:5,000) and HRP-conjugated goat anti-rabbit secondary antibody (Cat#201, 1:20,000) respectively. Image was developed using NaQ™ ECL Substrate Kit (Cat#716).

SUPPORT

SUPPORT@GENUINBIOTECH.COM
TEL: +1-540-855-7041

ORDERS

SALES@GENUINBIOTECH.COM
FAX: +1-540-855-7041

WWW.GENUINBIOTECH.COM