

Catalog #: 4319

Aliases

PPP3CA; Protein Phosphatase 3 Catalytic Subunit Alpha; Calcineurin A Alpha; PPP2B; CALNA; CNA1; CAM-PRP Catalytic Subunit; EC 3.1.3.16; CNA Alpha; CALN; Protein Phosphatase 3 (Formerly 2B), Catalytic Subunit, Alpha Isoform (Calcineurin A Alpha); Serine/Threonine-Protein Phosphatase 2B Catalytic Subunit Alpha Isoform; Protein Phosphatase 3 (Formerly 2B), Catalytic Subunit, Alpha Isoform; Protein Phosphatase 2B, Catalytic Subunit, Alpha Isoform; Calmodulin-Dependent Calcineurin A Subunit Alpha Isoform; Protein Phosphatase 3, Catalytic Subunit, Alpha Isozyme; Protein Phosphatase 3 Catalytic Subunit Alpha Isozyme; ACCIID; CALNA1; IECEE1; DEE91; IECEE; CCN1; CNA

Background

Gene Name: PPP3CA

NCBI Gene Entry: [5530](#)

UniProt Entry: [Q08209](#)

Application Information

Molecular Weight: Predicted, 59 kDa; observed, 59 kDa

Clonality: Rabbit monoclonal antibody

Clone ID: 24GB10625

Species Reactivity: Human

Applications Tested: Western blotting (WB), immunocytochemistry (IC)

Immunogen

A synthesized peptide derived from human Calcineurin A

Isotype

Rabbit IgG

Storage Buffer

Supplied in PBS (pH 7.4) containing 50% glycerol, and 0.02% sodium azide.

Storage

Store at -20 °C for one year.

Recommended Dilutions

Western Blotting (WB): 1:1,000-1:5,000

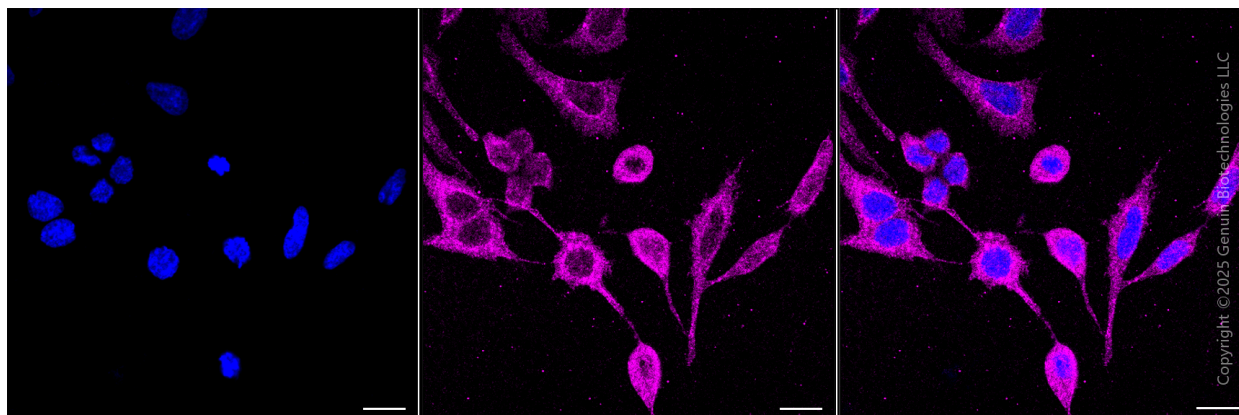
Anti-PPP3CA Recombinant Rabbit Monoclonal Antibody

PAGE 2

Immunocytochemistry (IC): 1:100-1:1,000

Note: This product is for research use only.

Validation Data



Immunocytochemical staining of HeLa cells with anti-PPP3CA antibody (Cat#4319, 1:1,000). Nuclei were stained blue with DAPI; PPP3CA was stained magenta with Alexa Fluor® 647. Images were taken using Leica stellaris 5. Protein abundance based on laser Intensity and smart gain: Medium. Scale bar, 20 μ m.

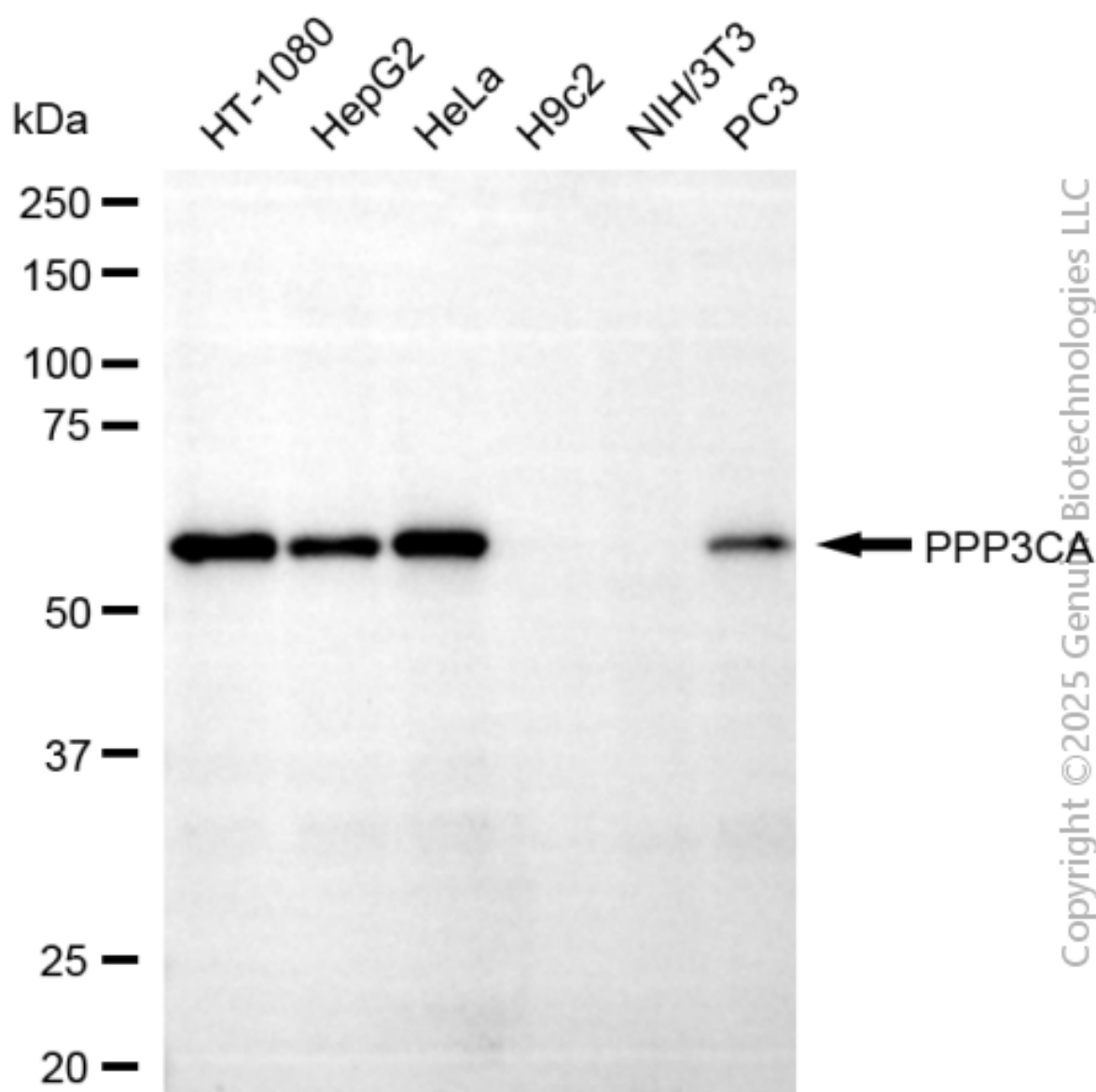
SUPPORT

SUPPORT@GENUINBIOTECH.COM
TEL: +1-540-855-7041

ORDERS

SALES@GENUINBIOTECH.COM
FAX: +1-540-855-7041

WWW.GENUINBIOTECH.COM



Western blotting analysis using anti-PPP3CA antibody (Cat#4319). Total cell lysates (30 μ g) from various cell lines were loaded and separated by SDS-PAGE. The blot was incubated with anti-PPP3CA antibody (Cat#4319, 1:5,000) and HRP-conjugated goat anti-rabbit secondary antibody (Cat#201, 1:20,000) respectively. Image was developed using NaQ™ ECL Substrate Kit (Cat#716).