

# Anti-Drosha ribonuclease III Recombinant Rabbit Monoclonal Antibody



**Catalog #: 4324**

## Aliases

DROSHA; Drosha Ribonuclease III; RNASE3L; RN3; HSA242976; RNASEN; Drosha, Double-Stranded RNA-Specific Endoribonuclease; Ribonuclease Type III, Nuclear; Ribonuclease 3; EC 3.1.26.3; RNase III; ETOHI2; P241; Putative Protein P241 Which Interacts With Transcription Factor Sp1; Drosha, Ribonuclease Type III; Putative Ribonuclease III; Nuclear RNase III Drosha; Ribonuclease III; Protein Drosha; RANSE3L; Etohi2

## Background

Gene Name: DROSHA

NCBI Gene Entry: [29102](#)

UniProt Entry: [Q9NRR4](#)

## Application Information

Molecular Weight: Predicted, 159 kDa; observed, 159 kDa

Clonality: Rabbit monoclonal antibody

Clone ID: 24GB10650

Species Reactivity: Human, rat

Applications Tested: Western blotting (WB), flow cytometry (FCM), immunocytochemistry (IC)

## Immunogen

A synthesized peptide derived from human Drosha

## Isotype

Rabbit IgG

## Storage Buffer

Supplied in PBS (pH 7.4) containing 50% glycerol, and 0.02% sodium azide.

## Storage

Store at -20 °C for one year.

## Recommended Dilutions

Western Blotting (WB): 1:1,000-1:5,000

Flow Cytometry (FCM): 1:2,000

Immunocytochemistry (IC): 1:100-1:1,000

---

### SUPPORT

SUPPORT@GENUINBIOTECH.COM  
TEL: +1-540-855-7041

### ORDERS

SALES@GENUINBIOTECH.COM  
FAX: +1-540-855-7041

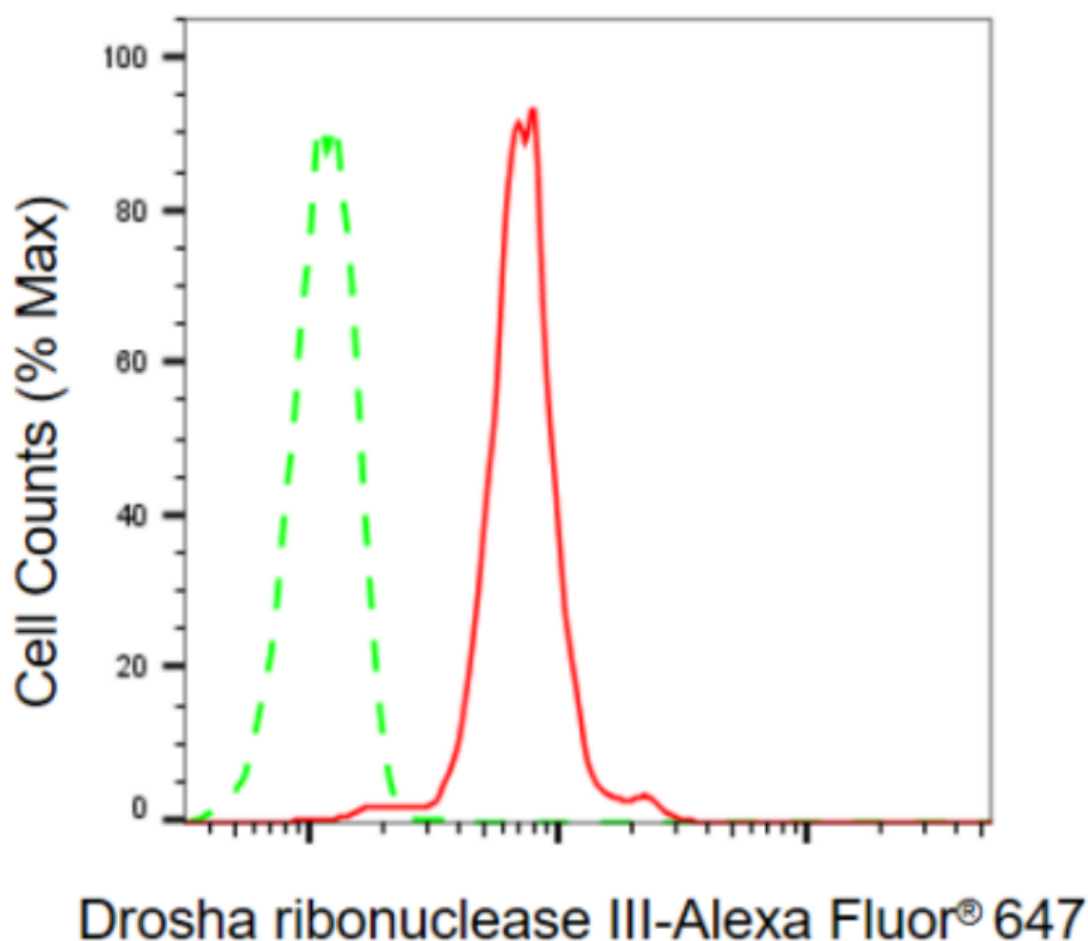
[WWW.GENUINBIOTECH.COM](http://WWW.GENUINBIOTECH.COM)

# Anti-Drosha ribonuclease III Recombinant Rabbit Monoclonal Antibody

PAGE 2

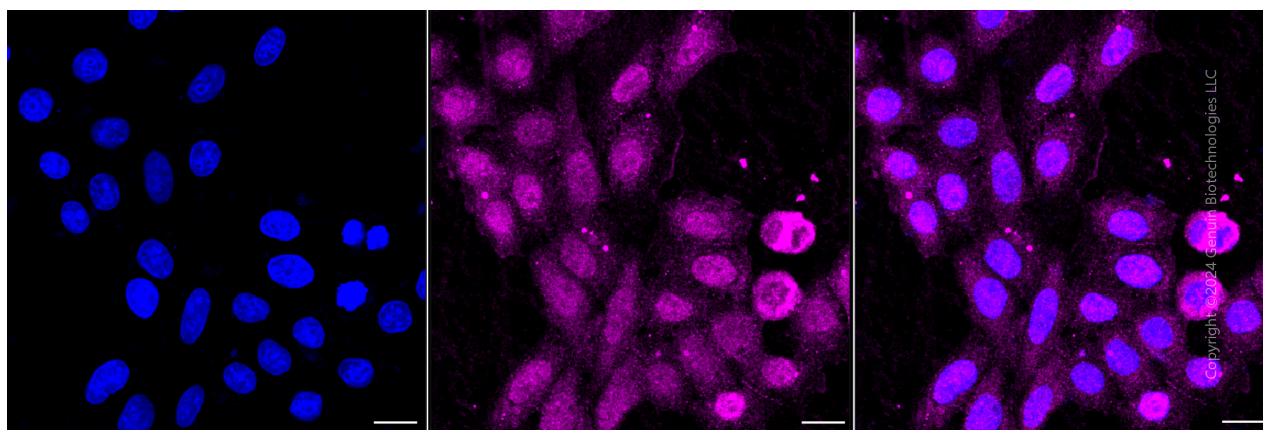
**Note:** This product is for research use only.

## Validation Data



Copyright ©2024 Genuin Biotechnologies LLC

Flow cytometric analysis of drosha ribonuclease III expression in HepG2 cells using anti-drosha ribonuclease III antibody (Cat#4324, 1:2,000). Green, isotype control; red, drosha ribonuclease III.



### SUPPORT

SUPPORT@GENUINBIOTECH.COM  
TEL: +1-540-855-7041

### ORDERS

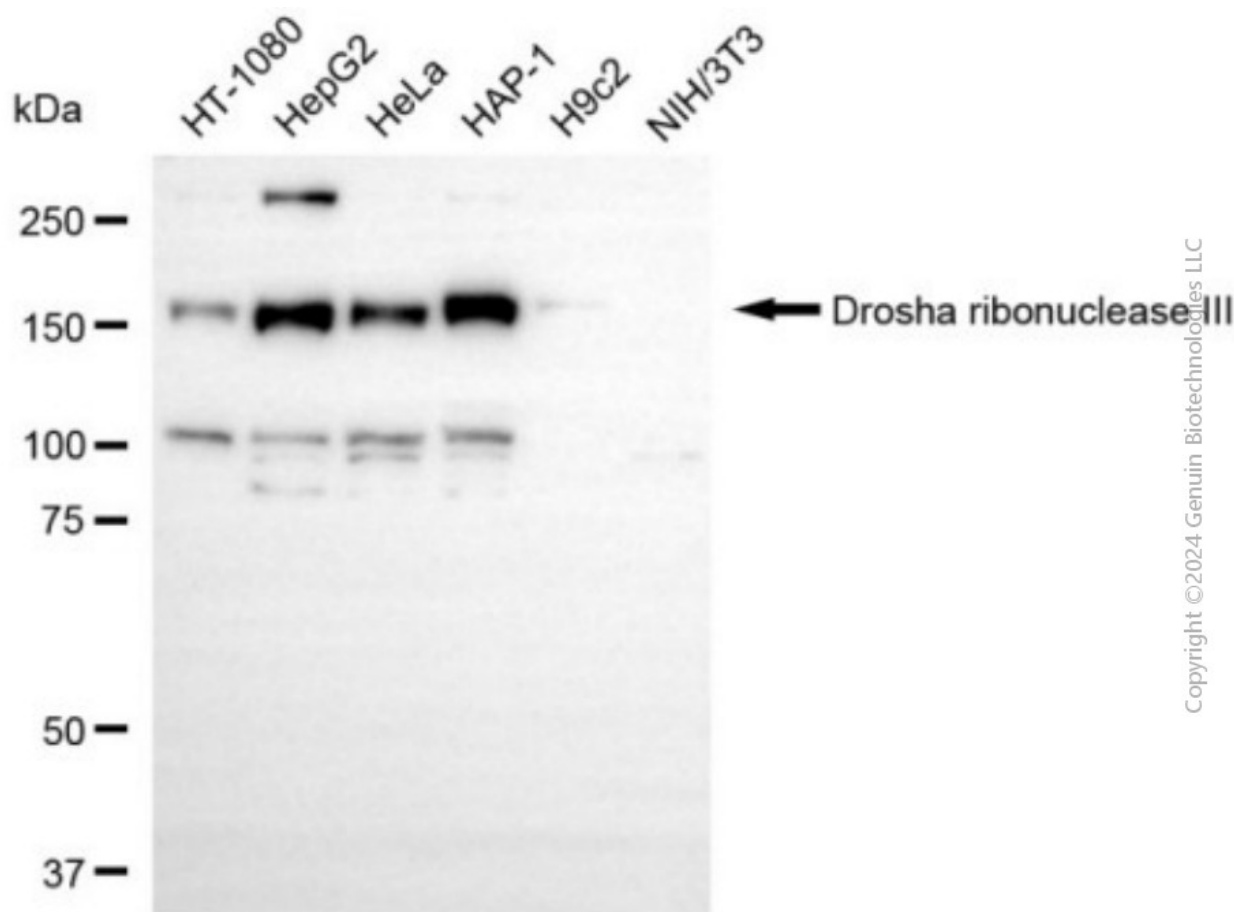
SALES@GENUINBIOTECH.COM  
FAX: +1-540-855-7041

WWW.GENUINBIOTECH.COM

## Anti-Drosha ribonuclease III Recombinant Rabbit Monoclonal Antibody

PAGE 3

Immunocytochemical staining of HepG2 cells with anti-drosha ribonuclease III antibody (Cat#4324, 1:1,000). Nuclei were stained blue with DAPI; Drosha ribonuclease III was stained magenta with Alexa Fluor® 647. Images were taken using Leica stellaris 5. Protein abundance based on laser Intensity and smart gain: Medium. Scale bar, 20  $\mu$ m.



Western blotting analysis using anti-drosha ribonuclease III antibody (Cat#4324). Total cell lysates (30  $\mu$ g) from various cell lines were loaded and separated by SDS-PAGE. The blot was incubated with anti-drosha ribonuclease III antibody (Cat#4324, 1:5,000) and HRP-conjugated goat anti-rabbit secondary antibody (Cat#201, 1:20,000) respectively. Image was developed using NaQ™ ECL Substrate Kit (Cat#716).

### SUPPORT

SUPPORT@GENUINBIOTECH.COM  
TEL: +1-540-855-7041

### ORDERS

SALES@GENUINBIOTECH.COM  
FAX: +1-540-855-7041

WWW.GENUINBIOTECH.COM