

Anti-Atg4C Recombinant Rabbit Monoclonal Antibody



Catalog #: 4336

Aliases

ATG4C; Autophagy Related 4C Cysteine Peptidase; AUTL3; APG4C; AUTL1; Autophagy-Related Cysteine Endopeptidase 3; Autophagy-Related Protein 4 Homolog C; AUT-Like 3 Cysteine Endopeptidase; Cysteine Protease ATG4C; Autophagin-3; FLJ14867; HsAPG4C; AUT (S. Cerevisiae)-Like 1, Cysteine Endopeptidase; AUT-Like 1, Cysteine Endopeptidase (S. Cerevisiae); ATG4 Autophagy Related 4 Homolog C (S. Cerevisiae); APG4 Autophagy 4 Homolog C (S. Cerevisiae); Epididymis Secretory Sperm Binding Protein; Autophagy Related 4C, Cysteine Peptidase; ATG4 Autophagy Related 4 Homolog C; AUT-Like 1, Cysteine Endopeptidase; APG4 Autophagy 4 Homolog C; EC 3.4.22.-; EC 3.4.22; APG4-C

Background

Gene Name: ATG4C

NCBI Gene Entry: [84938](#)

UniProt Entry: [Q96DT6](#)

Application Information

Molecular Weight: Predicted, 52 kDa; observed, 52 kDa

Clonality: Rabbit monoclonal antibody

Clone ID: 24GB10710

Species Reactivity: Human

Applications Tested: Western blotting (WB), flow cytometry (FCM), immunocytochemistry (IC)

Immunogen

A synthesized peptide derived from human ATG4C

Isotype

Rabbit IgG

Storage Buffer

Supplied in PBS (pH 7.4) containing 50% glycerol, and 0.02% sodium azide.

Storage

Store at -20 °C for one year.

Recommended Dilutions

Western Blotting (WB): 1:2,000-1:10,000

SUPPORT

SUPPORT@GENUINBIOTECH.COM
TEL: +1-540-855-7041

ORDERS

SALES@GENUINBIOTECH.COM
FAX: +1-540-855-7041

WWW.GENUINBIOTECH.COM

Anti-Atg4C Recombinant Rabbit Monoclonal Antibody

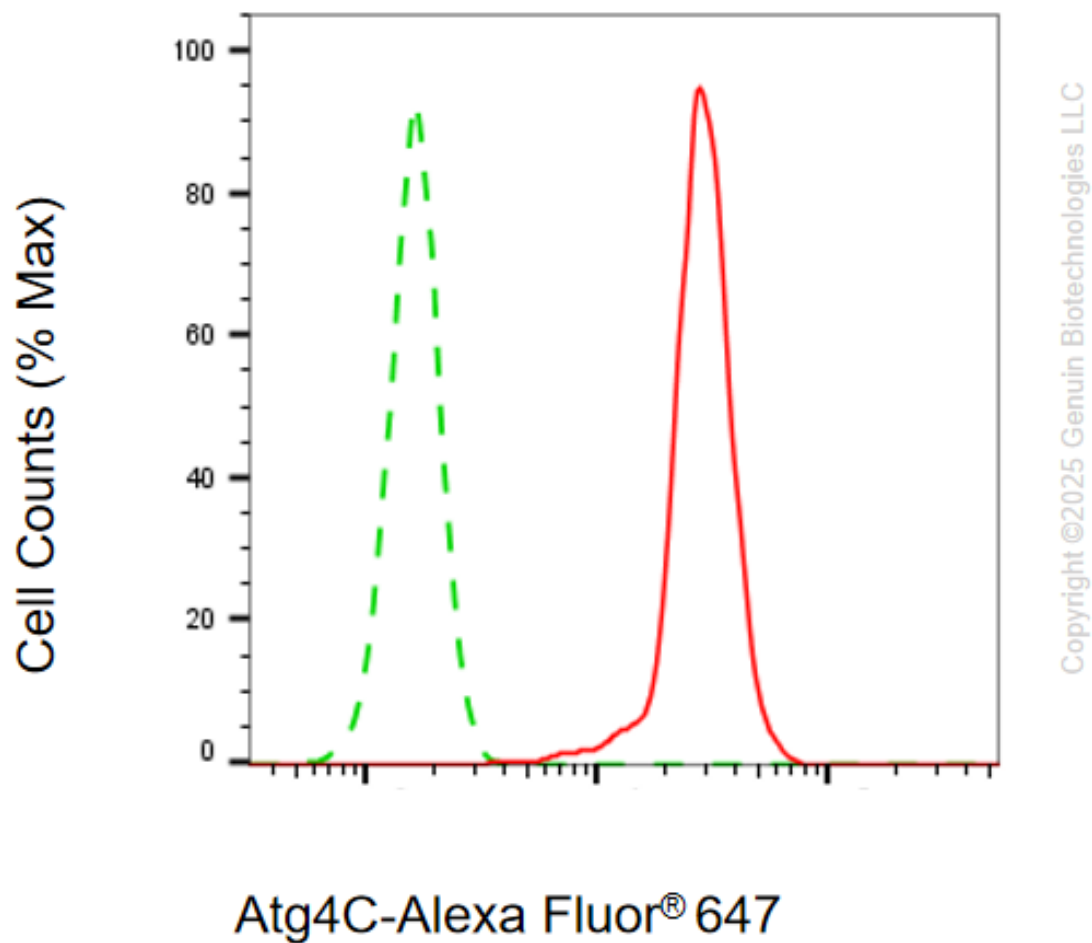
PAGE 2

Immunocytochemistry (IC): 1:100-1:1,000

Flow Cytometry (FCM): 1:2,000

Note: This product is for research use only.

Validation Data



Flow cytometric analysis of Atg4C expression in HepG2 cells using anti-Atg4C antibody (Cat#4336, 1:2,000). Green, isotype control; red, Atg4C.

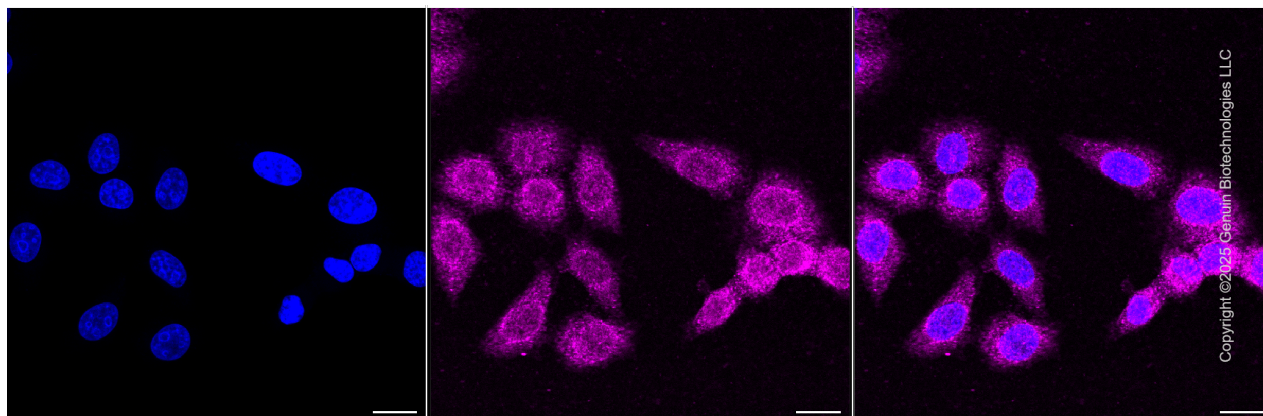
SUPPORT

SUPPORT@GENUINBIOTECH.COM
TEL: +1-540-855-7041

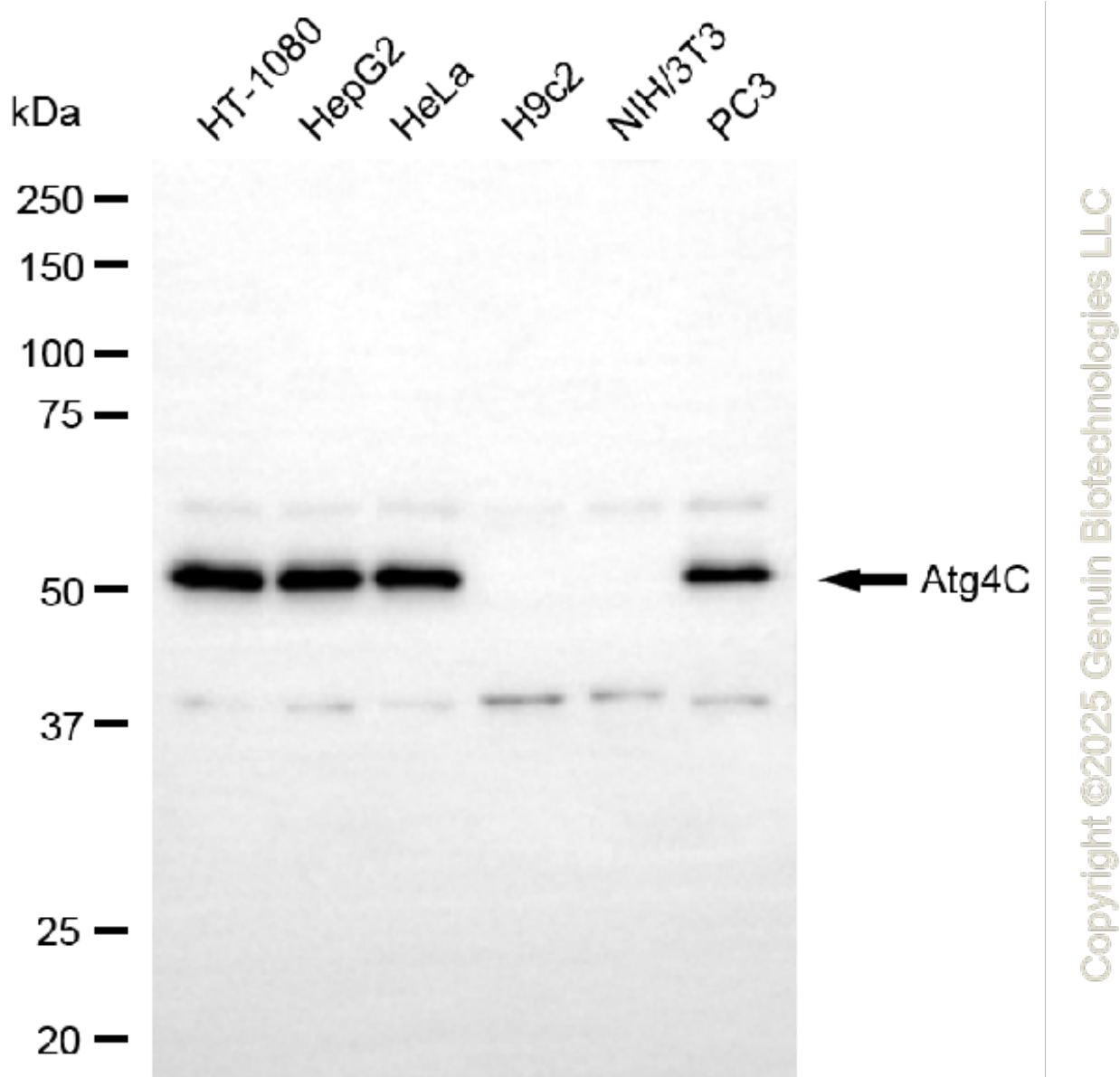
ORDERS

SALES@GENUINBIOTECH.COM
FAX: +1-540-855-7041

WWW.GENUINBIOTECH.COM



Immunocytochemical staining of HepG2 cells with anti-Atg4C antibody (Cat#4336, 1:1,000). Nuclei were stained blue with DAPI; Atg4C was stained magenta with Alexa Fluor® 647. Images were taken using Leica stellaris 5. Protein abundance based on laser Intensity and smart gain: Medium. Scale bar, 20 μ m.



Western blotting analysis using anti-ATG4C antibody (Cat#4336). Total cell lysates (30 μ g) from various cell lines were loaded and separated by SDS-PAGE. The blot was incubated with anti-ATG4C antibody (Cat#4336, 1:10,000) and HRP-conjugated goat anti-rabbit secondary antibody (Cat#201, 1:20,000) respectively. Image was developed using NaQ™ ECL Substrate Kit (Cat#716).