

# Anti-Pyruvate Dehydrogenase Kinase 1 Recombinant Rabbit Monoclonal Antibody



**Catalog #: 4340**

## Aliases

Pyruvate Dehydrogenase Kinase 1; [Pyruvate Dehydrogenase (Acetyl-Transferring)] Kinase Isozyme 1, Mitochondrial; Pyruvate Dehydrogenase Kinase, Isoenzyme 1; PDH Kinase 1; EC 2.7.11.2; Pyruvate Dehydrogenase (Acetyl-Transferring) Kinase Isozyme 1, Mitochondrial; Mitochondrial Pyruvate Dehydrogenase, Lipoamide, Kinase Isoenzyme 1; Pyruvate Dehydrogenase Kinase, Isozyme 1; Pyruvate Dehydrogenase Kinase Isoform 1; EC 2.7.11; PDHK1

## Background

Gene Name: PDK1

NCBI Gene Entry: [5163](#)

UniProt Entry: [Q15118](#)

## Application Information

Molecular Weight: Predicted, 49 kDa; observed, 49 kDa

Clonality: Rabbit monoclonal antibody

Clone ID: 24GB10730

Species Reactivity: Human, mouse, rat

Applications Tested: Western blotting (WB), flow cytometry (FCM)

## Immunogen

A synthesized peptide derived from human PDK1

## Isotype

Rabbit IgG

## Storage Buffer

Supplied in PBS (pH 7.4) containing 50% glycerol, and 0.02% sodium azide.

## Storage

Store at -20 °C for one year.

## Recommended Dilutions

Western Blotting (WB): 1:1,000-1:5,000

Flow Cytometry (FCM): 1:2,000

---

### SUPPORT

SUPPORT@GENUINBIOTECH.COM  
TEL: +1-540-855-7041

### ORDERS

SALES@GENUINBIOTECH.COM  
FAX: +1-540-855-7041

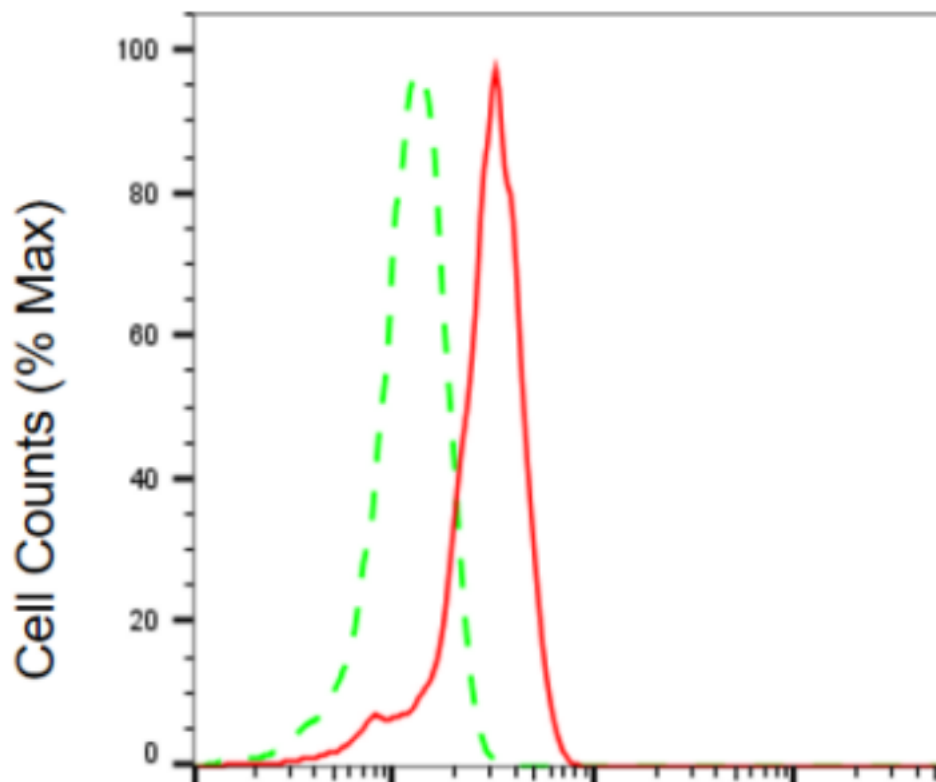
[WWW.GENUINBIOTECH.COM](http://WWW.GENUINBIOTECH.COM)

# Anti-Pyruvate Dehydrogenase Kinase 1 Recombinant Rabbit Monoclonal Antibody

PAGE 2

**Note:** This product is for research use only.

## Validation Data



Copyright ©2024 Genuin Biotechnologies LLC

## Pyruvate dehydrogenase kinase 1-Alexa Fluor® 647

Flow cytometric analysis of pyruvate dehydrogenase kinase 1 expression in H9c2 cells using anti-pyruvate dehydrogenase kinase 1 antibody (Cat#4340, 1:2,000). Green, isotype control; red, pyruvate dehydrogenase kinase 1.

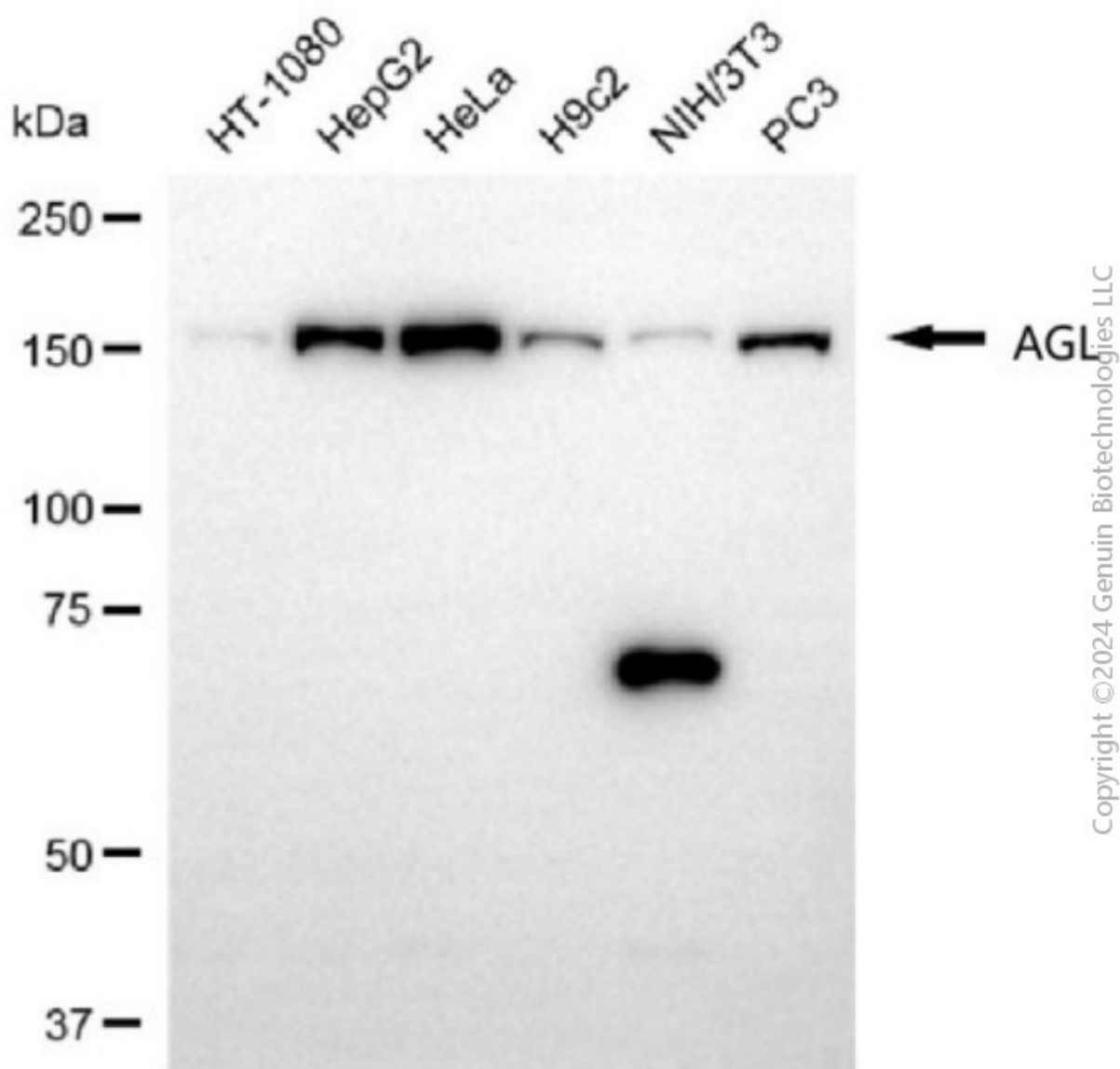
### SUPPORT

SUPPORT@GENUINBIOTECH.COM  
TEL: +1-540-855-7041

### ORDERS

SALES@GENUINBIOTECH.COM  
FAX: +1-540-855-7041

[WWW.GENUINBIOTECH.COM](http://WWW.GENUINBIOTECH.COM)



Western blotting analysis using anti-pyruvate dehydrogenase kinase 1 antibody (Cat#4340). Total cell lysates (30 µg) from various cell lines were loaded and separated by SDS-PAGE. The blot was incubated with anti-pyruvate dehydrogenase kinase 1 antibody (Cat#4340, 1:5,000) and HRP-conjugated goat anti-rabbit secondary antibody (Cat#201, 1:20,000) respectively. Image was developed using FeQ™ ECL Substrate Kit (Cat#226).