

Anti-EIF2AK4 Recombinant Rabbit Monoclonal Antibody



Catalog #: 4343

Aliases

EIF2AK4; Eukaryotic Translation Initiation Factor 2 Alpha Kinase 4; GCN2; KIAA1338; EIF-2-Alpha Kinase GCN2; GCN2-Like Protein; Eukaryotic Translation Initiation Factor 2-Alpha Kinase 4; General Control Nonderepressible; GCN2 EIF2alpha Kinase; EIF-2-Alpha Kinase; EC 2.7.11.1; PVOD2

Background

Gene Name: EIF2AK4

NCBI Gene Entry: [440275](#)

UniProt Entry: [Q9P2K8](#)

Application Information

Molecular Weight: Predicted, 187 kDa; observed, 187 kDa

Clonality: Rabbit monoclonal antibody

Clone ID: 24GB10745

Species Reactivity: Human

Applications Tested: Western blotting (WB), flow cytometry (FCM), immunocytochemistry (IC)

Immunogen

A synthesized peptide derived from human GCN2

Isotype

Rabbit IgG

Storage Buffer

Supplied in PBS (pH 7.4) containing 50% glycerol, and 0.02% sodium azide.

Storage

Store at -20 °C for one year.

Recommended Dilutions

Western Blotting (WB): 1:1,000-1:5,000

Flow Cytometry (FCM): 1:2,000

Immunocytochemistry (IC): 1:100-1:1,000

SUPPORT

SUPPORT@GENUINBIOTECH.COM
TEL: +1-540-855-7041

ORDERS

SALES@GENUINBIOTECH.COM
FAX: +1-540-855-7041

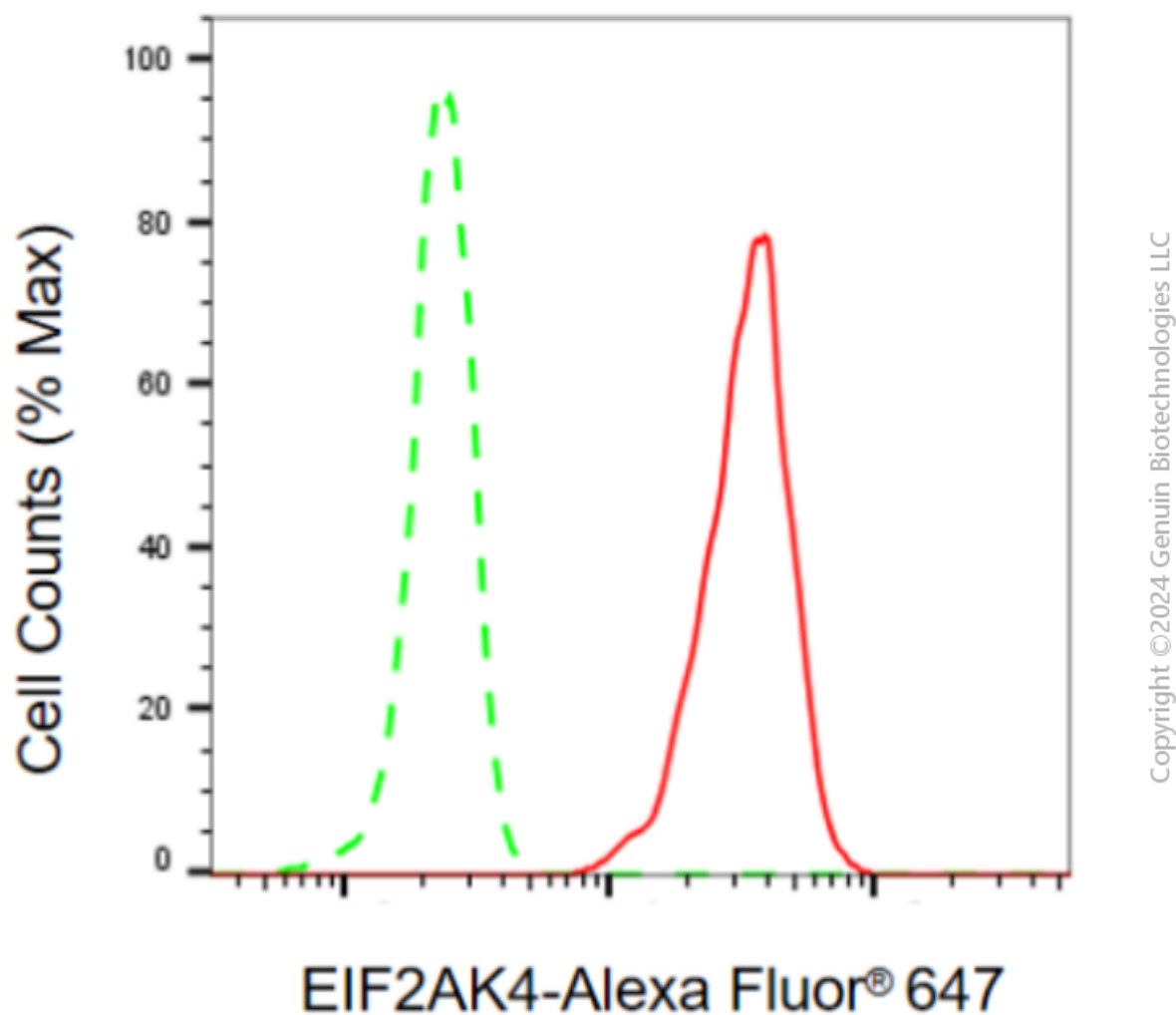
WWW.GENUINBIOTECH.COM

Anti-EIF2AK4 Recombinant Rabbit Monoclonal Antibody

PAGE 2

Note: This product is for research use only.

Validation Data



Flow cytometric analysis of EIF2AK4 expression in HT-1080 cells using anti-EIF2AK4 antibody (Cat#4343, 1:2,000). Green, isotype control; red, EIF2AK4.

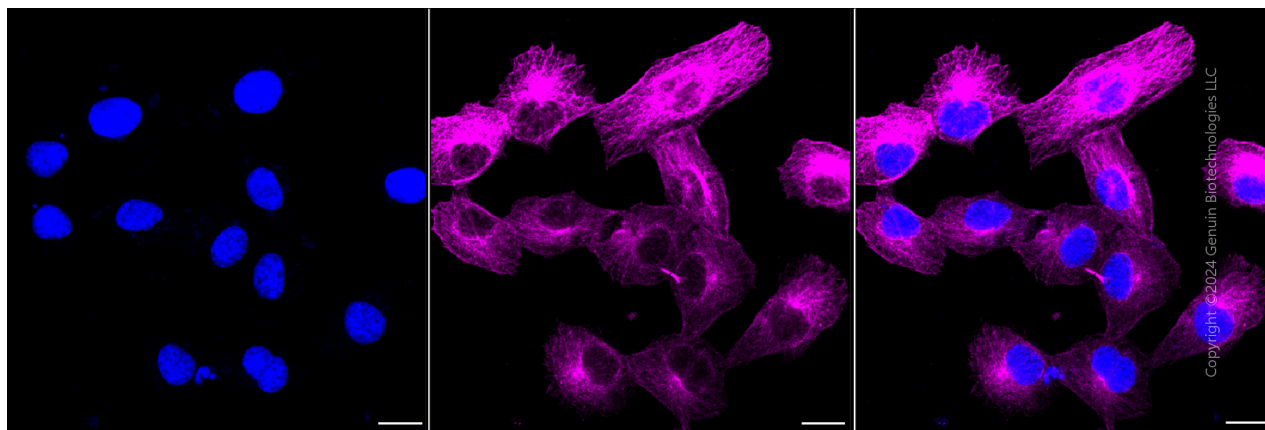
SUPPORT

SUPPORT@GENUINBIOTECH.COM
TEL: +1-540-855-7041

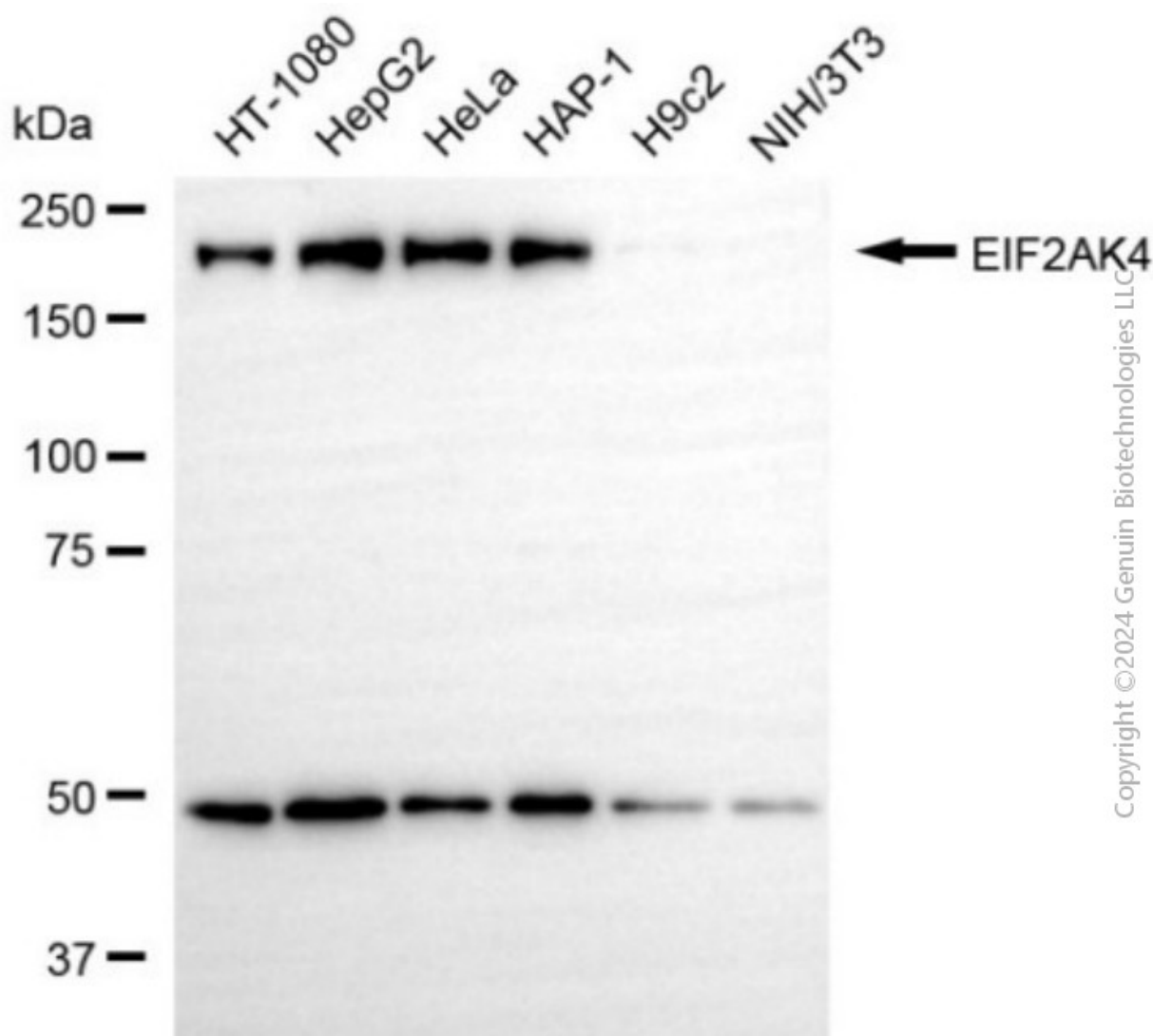
ORDERS

SALES@GENUINBIOTECH.COM
FAX: +1-540-855-7041

WWW.GENUINBIOTECH.COM



Immunocytochemical staining of HT-1080 cells with anti-EIF2AK4 antibody (Cat#4343, 1:1,000). Nuclei were stained blue with DAPI; EIF2AK4 was stained magenta with Alexa Fluor® 647. Images were taken using Leica stellaris 5. Protein abundance based on laser Intensity and smart gain: High. Scale bar, 20 μ m.



Western blotting analysis using anti-EIF2AK4 antibody (Cat#4343). Total cell lysates (30 μ g) from various cell lines were loaded and separated by SDS-PAGE. The blot was incubated with anti-EIF2AK4 antibody (Cat#4343, 1:5,000) and HRP-conjugated goat anti-rabbit secondary antibody (Cat#201, 1:20,000) respectively. Image was developed using NaQ™ ECL Substrate Kit (Cat#716).