

Anti-Prostaglandin E Synthase 3 Recombinant Rabbit Monoclonal Antibody



Catalog #: 4344

Aliases

PTGES3; Prostaglandin E Synthase 3; CPGES; TEBP; P23; Prostaglandin E Synthase 3 (Cytosolic); Cytosolic Prostaglandin E2 Synthase; Progesterone Receptor Complex P23; Telomerase-Binding Protein P23; Hsp90 Co-Chaperone; EC 5.3.99.3; Unactive Progesterone Receptor, 23 KD; Cytosolic Prostaglandin E Synthase

Background

Gene Name: PTGES3

NCBI Gene Entry: [10728](#)

UniProt Entry: [Q15185](#)

Application Information

Molecular Weight: Predicted, 19 kDa; observed, 19 kDa

Clonality: Rabbit monoclonal antibody

Clone ID: 24GB10750

Species Reactivity: Human, mouse, rat

Applications Tested: Western blotting (WB), flow cytometry (FCM), immunocytochemistry (IC)

Immunogen

A synthesized peptide derived from human p23

Isotype

Rabbit IgG

Storage Buffer

Supplied in PBS (pH 7.4) containing 50% glycerol, and 0.02% sodium azide.

Storage

Store at -20 °C for one year.

Recommended Dilutions

Western Blotting (WB): 1:1,000-1:5,000

Flow Cytometry (FCM): 1:2,000

Immunocytochemistry (IC): 1:100-1:1,000

SUPPORT

SUPPORT@GENUINBIOTECH.COM
TEL: +1-540-855-7041

ORDERS

SALES@GENUINBIOTECH.COM
FAX: +1-540-855-7041

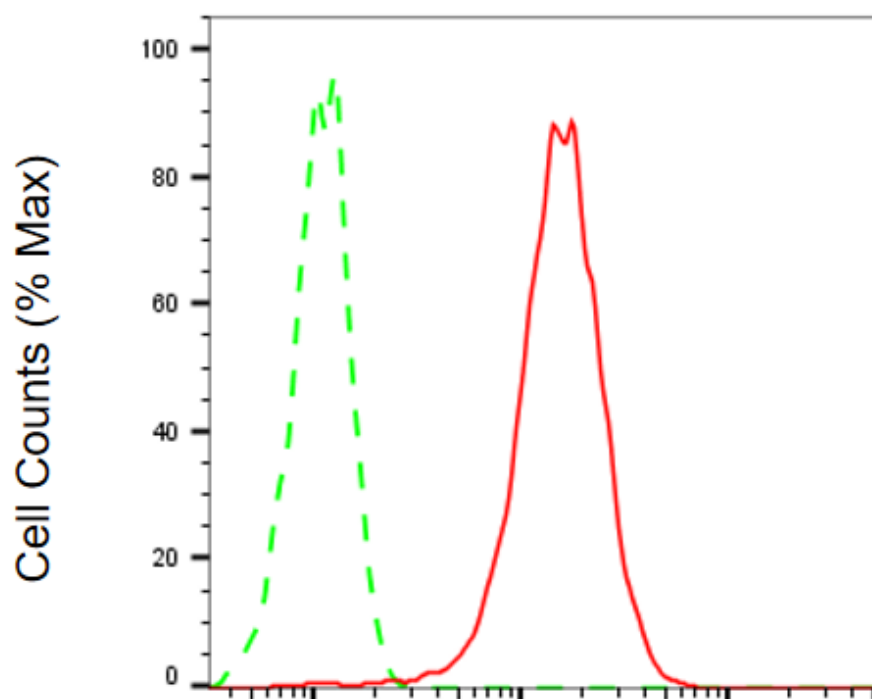
WWW.GENUINBIOTECH.COM

Anti-Prostaglandin E Synthase 3 Recombinant Rabbit Monoclonal Antibody

PAGE 2

Note: This product is for research use only.

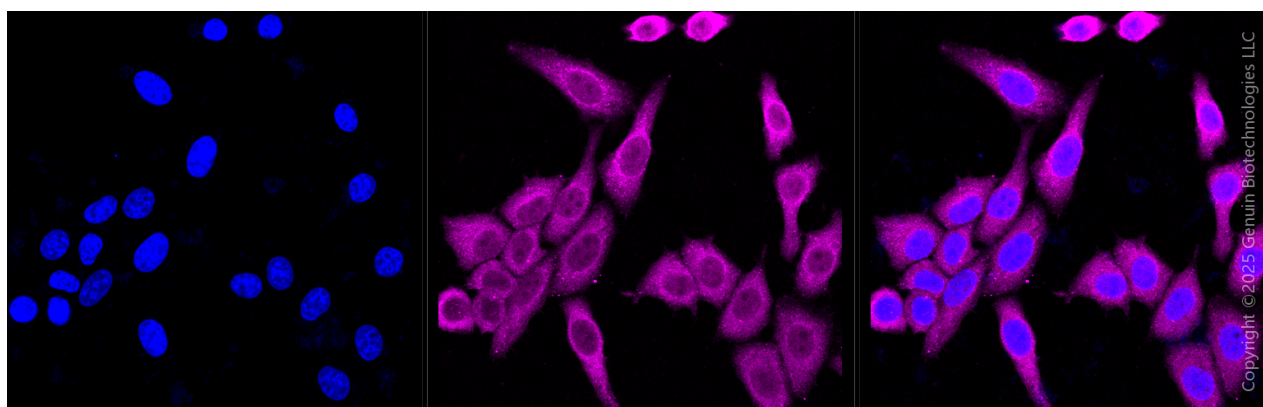
Validation Data



Copyright ©2025 Genuin Biotechnologies LLC

Prostaglandin E synthase 3-Alexa Fluor® 647

Flow cytometric analysis of Prostaglandin E synthase 3 expression in HepG2 cells using anti-Prostaglandin E synthase 3 antibody (Cat#4344, 1:2,000). Green, isotype control; red, Prostaglandin E synthase 3.



Copyright ©2025 Genuin Biotechnologies LLC

Immunocytochemical staining of HepG2 cells with anti-Prostaglandin E synthase 3 antibody (Cat#4344, 1:1,000). Nuclei were stained blue with DAPI; Prostaglandin E synthase 3 was stained magenta with Alexa Fluor® 647. Images were taken using Leica stellaris 5. Protein abundance

SUPPORT

SUPPORT@GENUINBIOTECH.COM
TEL: +1-540-855-7041

ORDERS

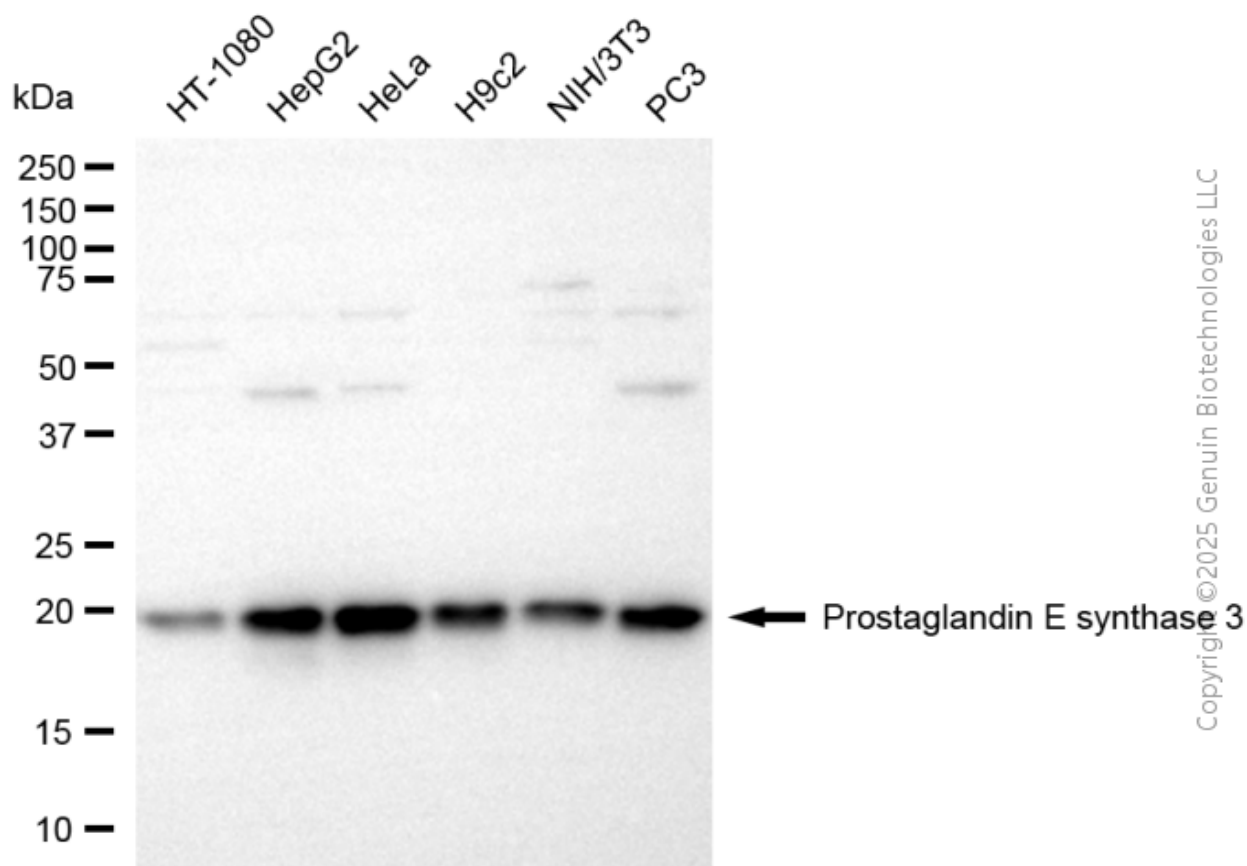
SALES@GENUINBIOTECH.COM
FAX: +1-540-855-7041

WWW.GENUINBIOTECH.COM

Anti-Prostaglandin E Synthase 3 Recombinant Rabbit Monoclonal Antibody

PAGE 3

based on laser Intensity and smart gain: High. Scale bar, 20 μ m.



Western blotting analysis using anti-prostaglandin E synthase 3 antibody (Cat#4344). Total cell lysates (30 μ g) from various cell lines were loaded and separated by SDS-PAGE. The blot was incubated with anti-prostaglandin E synthase 3 antibody (Cat#4344, 1:5,000) and HRP-conjugated goat anti-rabbit secondary antibody (Cat#201, 1:20,000) respectively. Image was developed using NaQ™ ECL Substrate Kit (Cat#716).

SUPPORT

SUPPORT@GENUINBIOTECH.COM
TEL: +1-540-855-7041

ORDERS

SALES@GENUINBIOTECH.COM
FAX: +1-540-855-7041

WWW.GENUINBIOTECH.COM