

# Anti-APE1 Recombinant Rabbit Monoclonal Antibody



**Catalog #: 4347**

## Aliases

APEX1; Apurinic/Apyrimidinic Endodeoxyribonuclease 1; REF1; HAP1; APEN; APE; APX; REF-1; APE-1; APEX; APEX Nuclease (Multifunctional DNA Repair Enzyme) 1; DNA-(Apurinic Or Apyrimidinic Site) Endonuclease; DNA Repair Nuclease/Redox Regulator APEX1; Apurinic-Apyrimidinic Endonuclease 1; Redox Factor-1; APE1; APEX Nuclease (Multifunctional DNA Repair Enzyme); Deoxyribonuclease (Apurinic Or Apyrimidinic); Apurinic/Apyrimidinic (Abasic) Endonuclease; DNA-(Apurinic Or Apyrimidinic Site) Lyase; AP Endonuclease Class I; AP Endonuclease 1; Protein REF-1; APEX Nuclease; EC 4.2.99.18; EC 3.1.11.2; EC 3.1.21.-; AP Lyase

## Background

Gene Name: APEX1

NCBI Gene Entry: [328](#)

UniProt Entry: [P27695](#)

## Application Information

Molecular Weight: Predicted, 36 kDa; observed, 36 kDa

Clonality: Rabbit monoclonal antibody

Clone ID: 24GB10765

Species Reactivity: Human, mouse, rat

Applications Tested: Western blotting (WB), flow cytometry(FCM)

## Immunogen

A synthesized peptide derived from human APEX1

## Isotype

Rabbit IgG

## Storage Buffer

Supplied in PBS (pH 7.4) containing 50% glycerol, and 0.02% sodium azide.

## Storage

Store at -20 °C for one year.

## Recommended Dilutions

Western Blotting (WB): 1:1,000-1:5,000

---

### SUPPORT

SUPPORT@GENUINBIOTECH.COM  
TEL: +1-540-855-7041

### ORDERS

SALES@GENUINBIOTECH.COM  
FAX: +1-540-855-7041

[WWW.GENUINBIOTECH.COM](http://WWW.GENUINBIOTECH.COM)

## Anti-APE1 Recombinant Rabbit Monoclonal Antibody

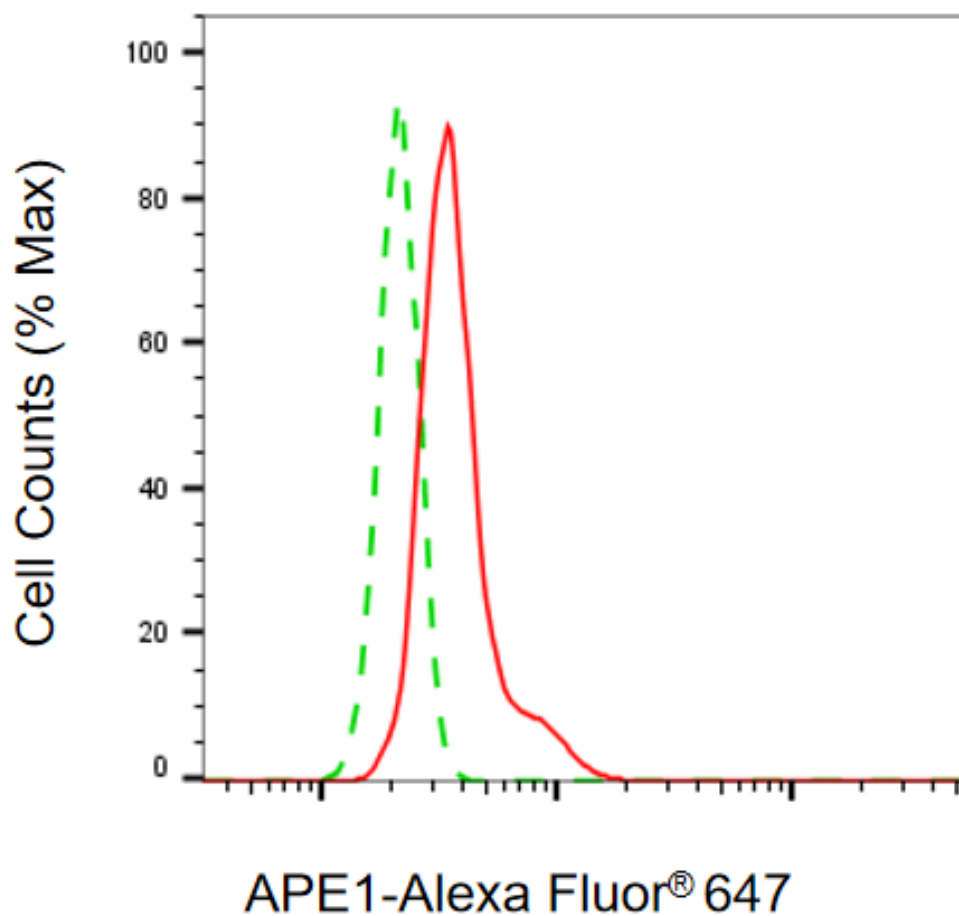
PAGE 2

Flow Cytometry (FCM): 1:2,000

Immunocytochemistry (IC): 1:200 - 1:1,000

**Note:** This product is for research use only.

### Validation Data



Copyright ©2025 Genuin Biotechnologies LLC

Flow cytometric analysis of APE1 expression in HT-1080 cells using anti-APE1 antibody (Cat#4347, 1:2,000). Green, isotype control; red, APE1.

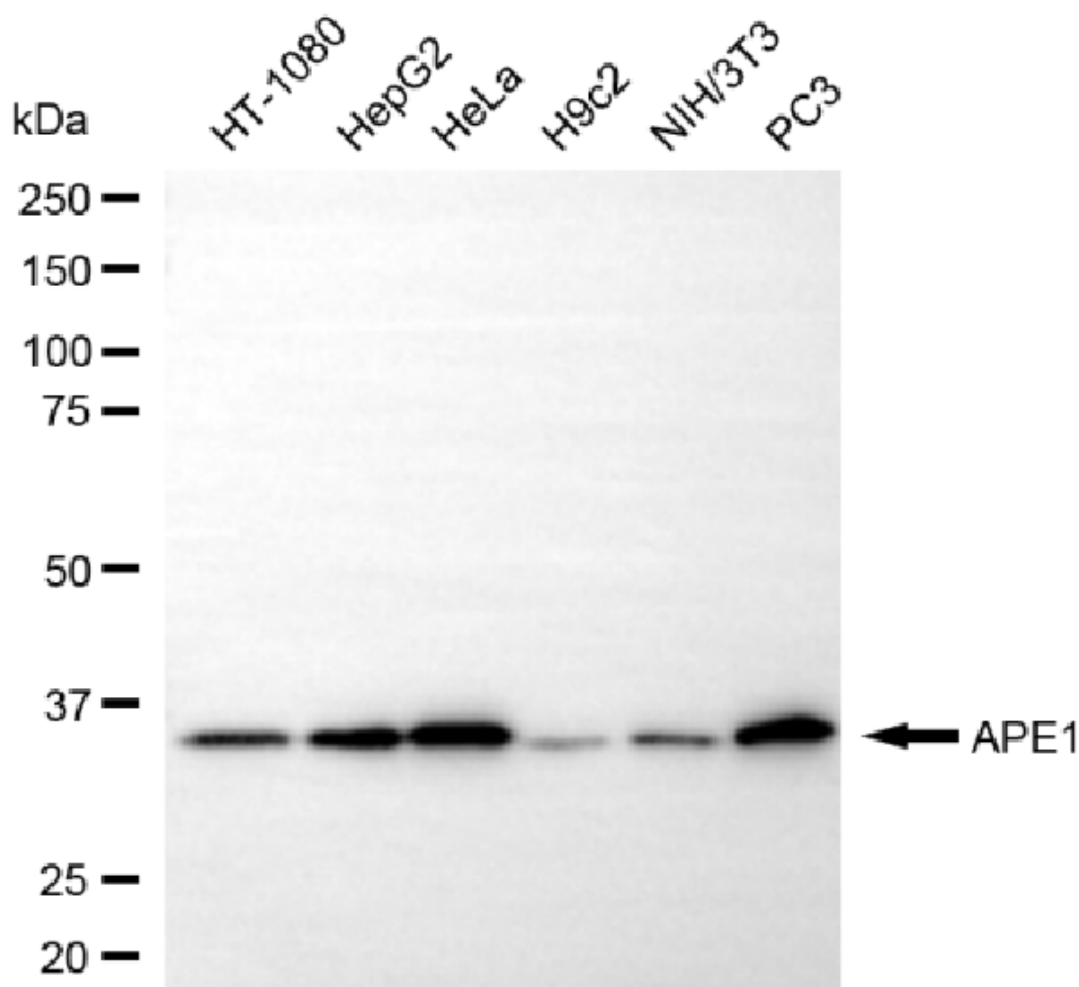
#### SUPPORT

SUPPORT@GENUINBIOTECH.COM  
TEL: +1-540-855-7041

#### ORDERS

SALES@GENUINBIOTECH.COM  
FAX: +1-540-855-7041

[WWW.GENUINBIOTECH.COM](http://WWW.GENUINBIOTECH.COM)



Copyright ©2025 Genuin Biotechnologies LLC

Western blotting analysis using anti-APE1 antibody (Cat#4347). Total cell lysates (30  $\mu$ g) from various cell lines were loaded and separated by SDS-PAGE. The blot was incubated with anti-APE1 antibody (Cat#4347, 1:5,000) and HRP-conjugated goat anti-rabbit secondary antibody (Cat#201, 1:20,000) respectively. Image was developed using NaQ™ ECL Substrate Kit (Cat#716).