

# Anti-Chromodomain helicase DNA binding protein 3 Recombinant Rabbit Monoclonal



**Catalog #: 4348**

## Aliases

CHD3; Chromodomain Helicase DNA Binding Protein 3; ZFH; Chromodomain-Helicase-DNA-Binding Protein 3; Mi-2 Autoantigen 240 KDa Protein; ATP-Dependent Helicase CHD3; Zinc Finger Helicase; Mi2-ALPHA; Mi-2a; CHD-3; HZFH; Zinc-Finger Helicase (Snf2-Like); EC 3.6.4.12; MI2-ALPHA; Mi2-Alpha; EC 3.6.1; SNIBCPS; MI-2A

## Background

Gene Name: CHD3

NCBI Gene Entry: [1107](#)

UniProt Entry: [Q12873](#)

## Application Information

Molecular Weight: Predicted, 226 kDa; observed, 260 kDa

Clonality: Rabbit monoclonal antibody

Clone ID: 24GB10770

Species Reactivity: Human, mouse, rat

Applications Tested: Western blotting (WB), flow cytometry (FCM), immunocytochemistry (IC)

## Immunogen

A synthesized peptide derived from human CHD3

## Isotype

Rabbit IgG

## Storage Buffer

Supplied in PBS (pH 7.4) containing 50% glycerol, and 0.02% sodium azide.

## Storage

Store at -20 °C for one year.

## Recommended Dilutions

Western Blotting (WB): 1:1,000-1:5,000

Flow Cytometry (FCM): 1:2,000

Immunocytochemistry (IC): 1:100-1:1,000

---

### SUPPORT

SUPPORT@GENUINBIOTECH.COM  
TEL: +1-540-855-7041

### ORDERS

SALES@GENUINBIOTECH.COM  
FAX: +1-540-855-7041

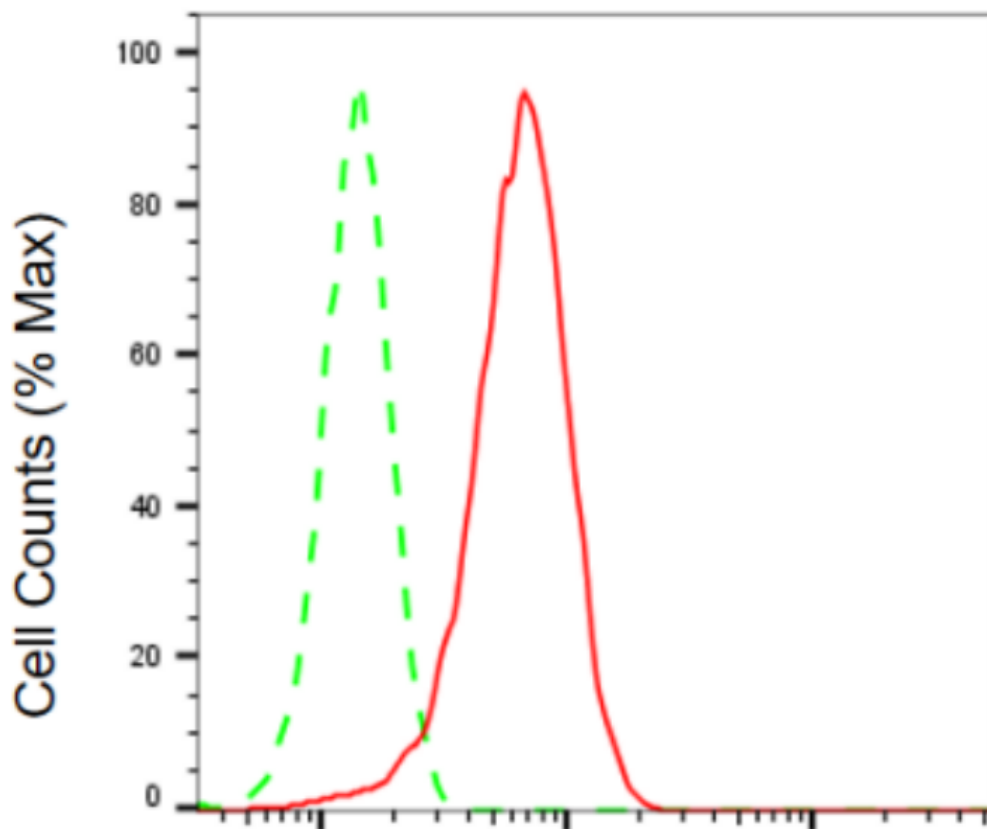
[WWW.GENUINBIOTECH.COM](http://WWW.GENUINBIOTECH.COM)

# Anti-Chromodomain helicase DNA binding protein 3 Recombinant Rabbit Monoclonal

PAGE 2

**Note:** This product is for research use only.

## Validation Data



Copyright ©2024 Genuin Biotechnologies LLC

### Chromodomain helicase DNA binding protein 3-Alexa Fluor® 647

Flow cytometric analysis of chromodomain helicase DNA binding protein 3 expression in HepG2 cells using anti-chromodomain helicase DNA binding protein 3 antibody (Cat#4348, 1:2,000). Green, isotype control; red, chromodomain helicase DNA binding protein 3.

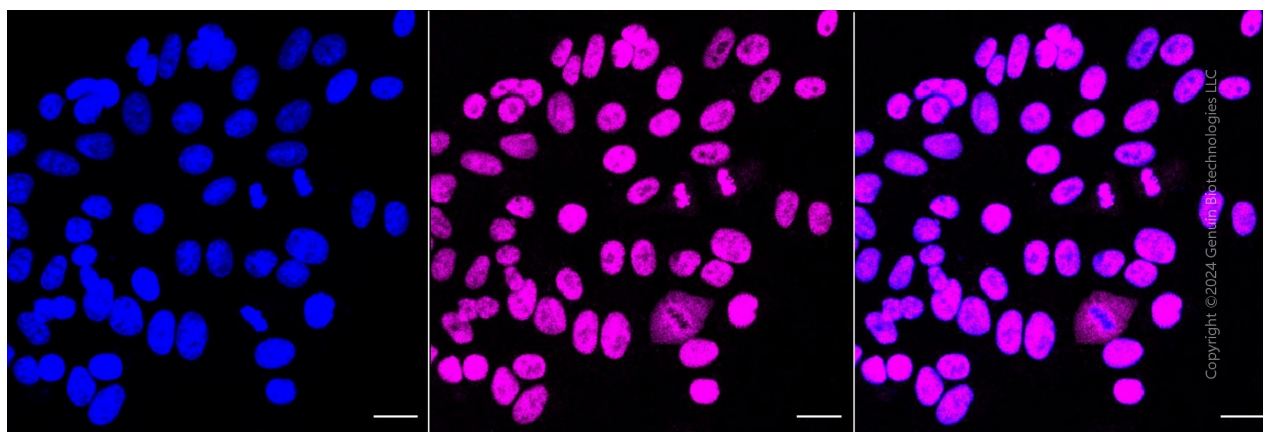
#### SUPPORT

SUPPORT@GENUINBIOTECH.COM  
TEL: +1-540-855-7041

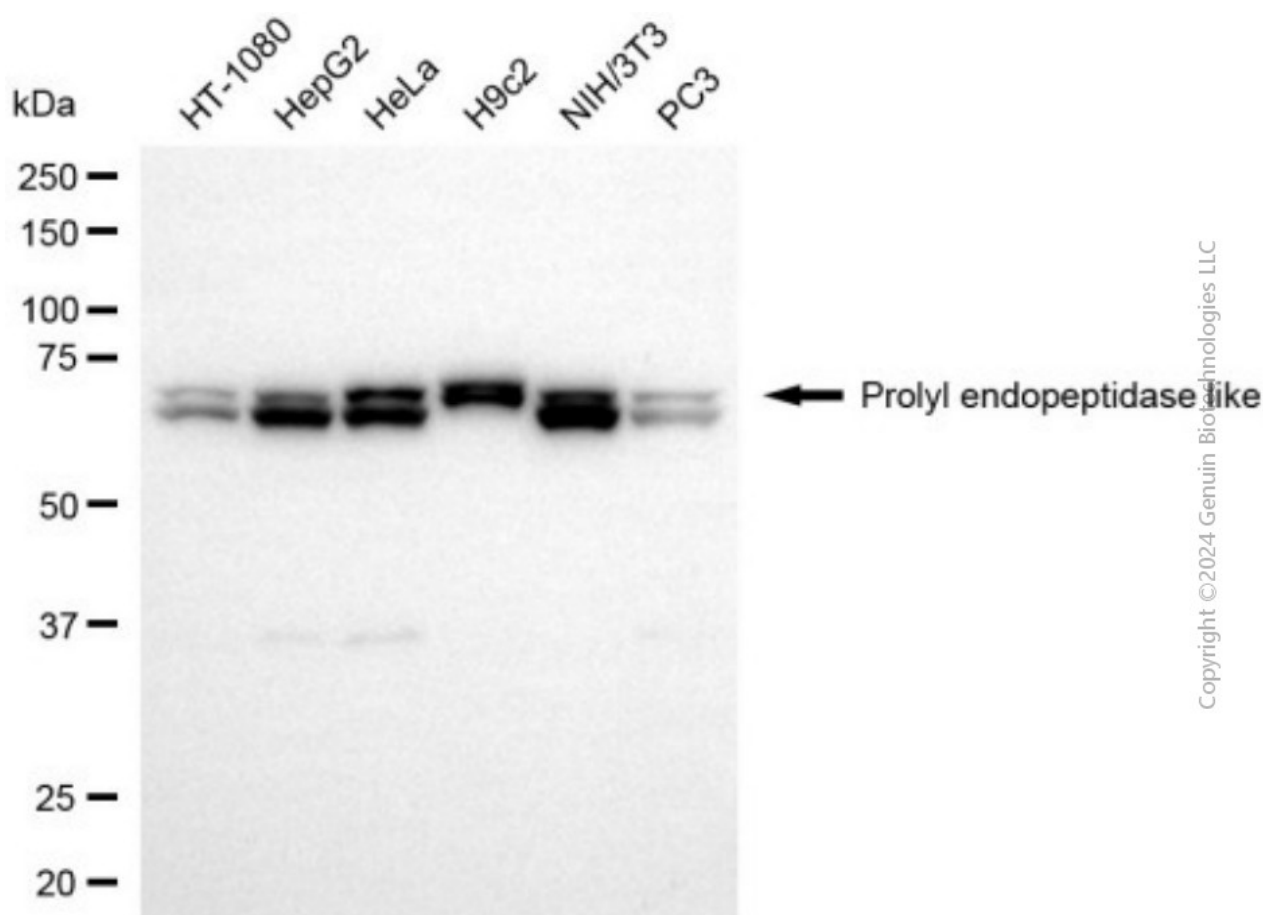
#### ORDERS

SALES@GENUINBIOTECH.COM  
FAX: +1-540-855-7041

WWW.GENUINBIOTECH.COM



Immunocytochemical staining of HepG2 cells with anti-Chromodomain helicase DNA binding protein 3 antibody (Cat#4348, 1:1,000). Nuclei were stained blue with DAPI; Chromodomain helicase DNA binding protein 3 was stained magenta with Alexa Fluor® 647. Images were taken using Leica stellaris 5. Protein abundance based on laser Intensity and smart gain: High. Scale bar, 20  $\mu$ m.



Western blotting analysis using anti-chromodomain helicase DNA binding protein 3 antibody (Cat#4348). Total cell lysates (30  $\mu$ g) from various cell lines were loaded and separated by SDS-PAGE. The blot was incubated with anti-chromodomain helicase DNA binding protein 3 antibody

## SUPPORT

SUPPORT@GENUINBIOTECH.COM  
TEL: +1-540-855-7041

## ORDERS

SALES@GENUINBIOTECH.COM  
FAX: +1-540-855-7041

WWW.GENUINBIOTECH.COM

## **Anti-Chromodomain helicase DNA binding protein 3 Recombinant Rabbit Monoclonal**

PAGE 4

(Cat#4348, 1:5,000) and HRP-conjugated goat anti-rabbit secondary antibody (Cat#201, 1:20,000) respectively. Image was developed using NaQ™ ECL Substrate Kit (Cat#716).

---

### **SUPPORT**

SUPPORT@GENUINBIOTECH.COM  
TEL: +1-540-855-7041

### **ORDERS**

SALES@GENUINBIOTECH.COM  
FAX: +1-540-855-7041

**WWW.GENUINBIOTECH.COM**