

Anti-NF2 / Merlin Recombinant Rabbit Monoclonal Antibody



Catalog #: 4349

Aliases

NF2; NF2, Moesin-Ezrin-Radixin Like (MERLIN) Tumor Suppressor; SCH; Schwannomin; Merlin; BDNF; ACN; Neurofibromin 2 (Bilateral Acoustic Neuroma); Bilateral Acoustic Neurofibromatosis; Moesin-Ezrin-Radixin-Like Protein; Moesin-Ezrin-Radixin Like; Neurofibromin-2 ; Schwannomerlin; Merlin-1; Moesin-Ezrin-Radixin-Like Protein; Neurofibromin 2 (Merlin); MERLIN-1; MERLIN; SWNV

Background

Gene Name: NF2

NCBI Gene Entry: [4771](#)

UniProt Entry: [P35240](#)

Application Information

Molecular Weight: Predicted, 70 kDa; observed, 70 kDa

Clonality: Rabbit monoclonal antibody

Clone ID: 24GB10775

Species Reactivity: Human, mouse, rat

Applications Tested: Western blotting (WB), flow cytometry (FCM), immunocytochemistry (IC)

Immunogen

A synthesized peptide derived from human NF2 / Merlin

Isotype

Rabbit IgG

Storage Buffer

Supplied in PBS (pH 7.4) containing 50% glycerol, and 0.02% sodium azide.

Storage

Store at -20 °C for one year.

Recommended Dilutions

Western Blotting (WB): 1:1,000-1:5,000

Flow Cytometry (FCM): 1:2,000

Immunocytochemistry (IC): 1:100-1:1,000

SUPPORT

SUPPORT@GENUINBIOTECH.COM
TEL: +1-540-855-7041

ORDERS

SALES@GENUINBIOTECH.COM
FAX: +1-540-855-7041

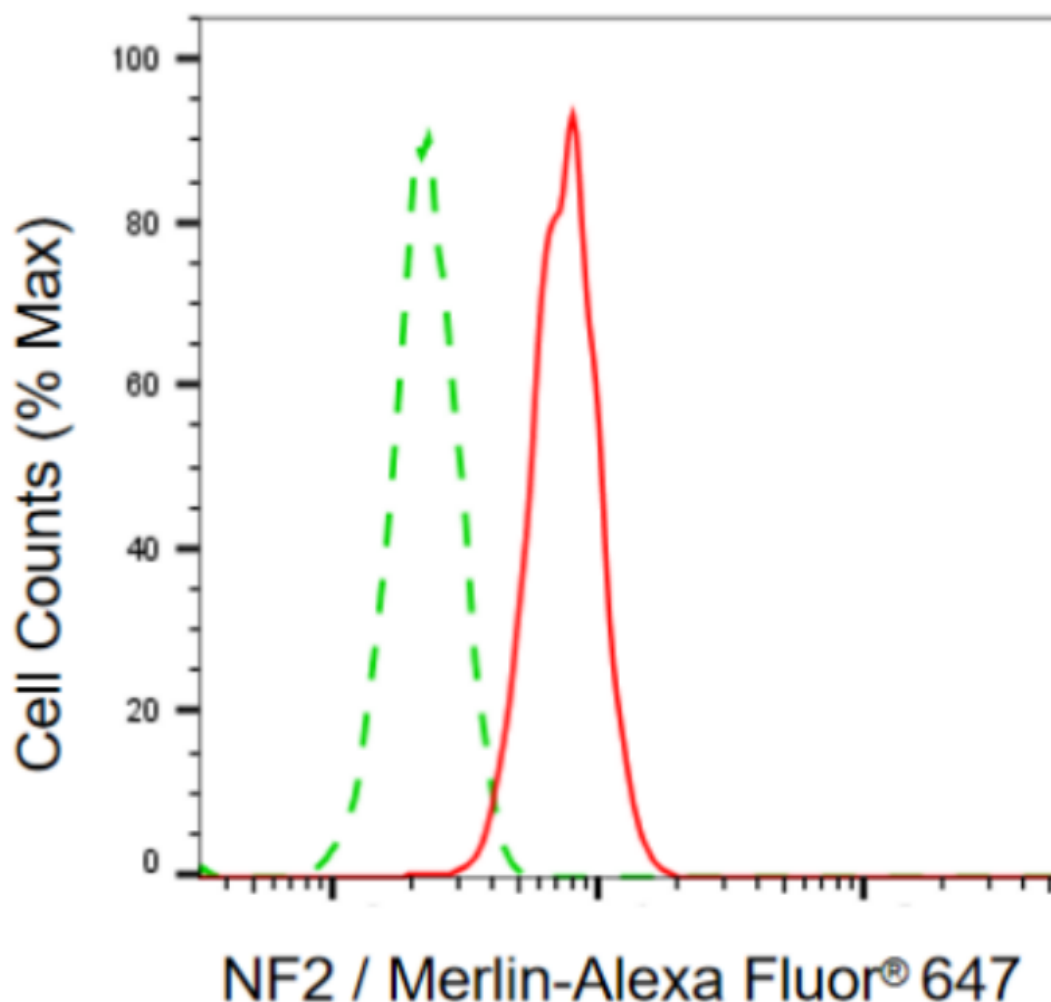
WWW.GENUINBIOTECH.COM

Anti-NF2 / Merlin Recombinant Rabbit Monoclonal Antibody

PAGE 2

Note: This product is for research use only.

Validation Data



Copyright ©2024 Genuin Biotechnologies LLC

Flow cytometric analysis of NF2/merlin expression in HAP-1 cells using anti-NF2/merlin antibody (Cat#4349, 1:2,000). Green, isotype control; red, NF2/merlin.

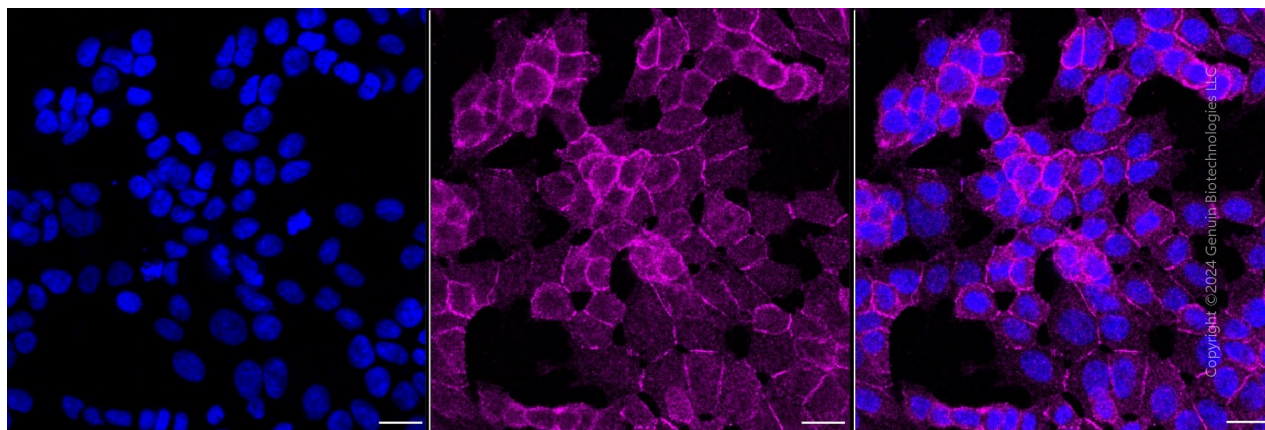
SUPPORT

SUPPORT@GENUINBIOTECH.COM
TEL: +1-540-855-7041

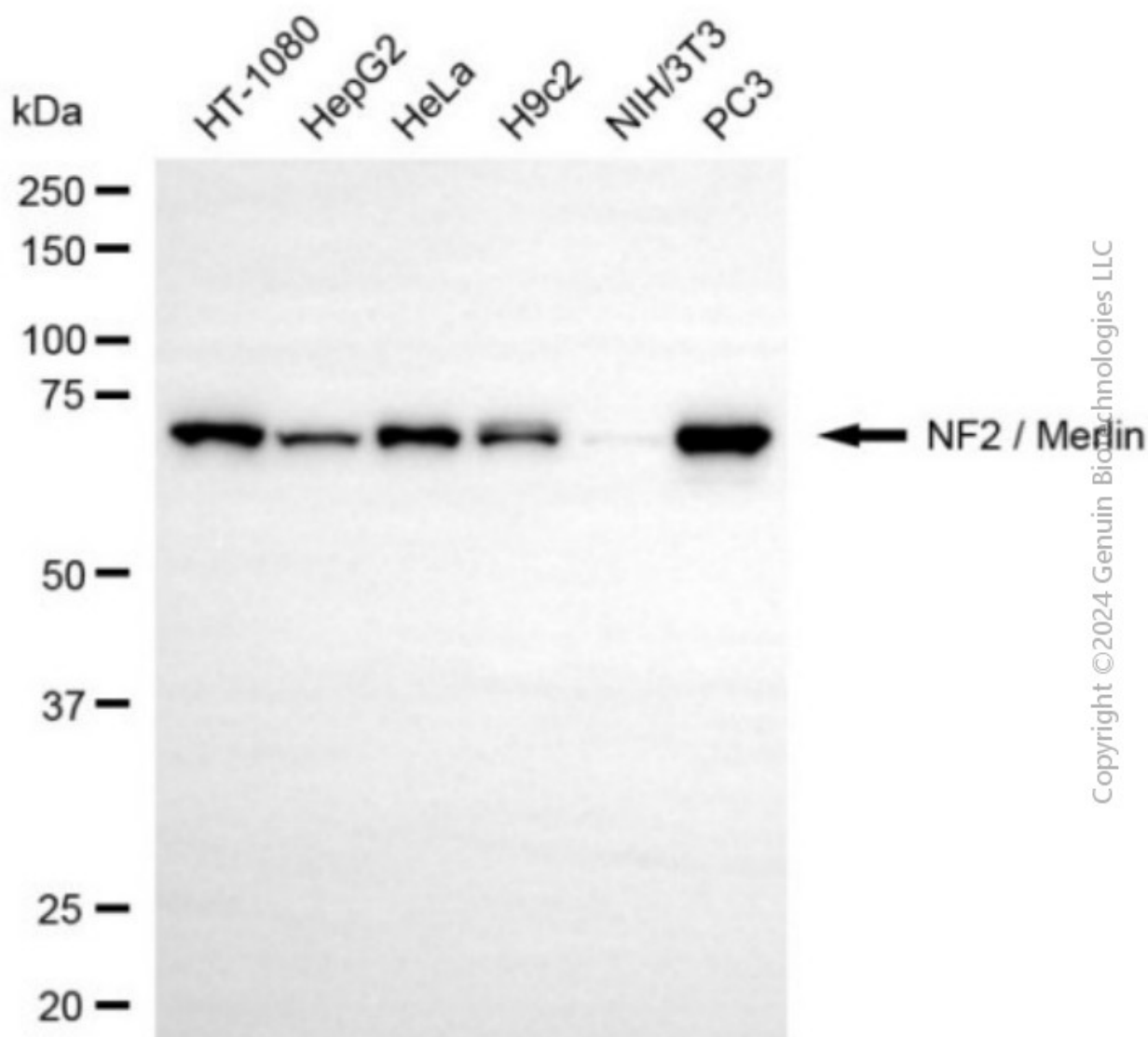
ORDERS

SALES@GENUINBIOTECH.COM
FAX: +1-540-855-7041

WWW.GENUINBIOTECH.COM



Immunocytochemical staining of HAP-1 cells with anti-NF2 / Merlin antibody (Cat#4349, 1:1,000). Nuclei were stained blue with DAPI; NF2 / Merlin was stained magenta with Alexa Fluor® 647. Images were taken using Leica stellaris 5. Protein abundance based on laser Intensity and smart gain: Medium. Scale bar, 20 μ m.



Western blotting analysis using anti-NF2 / Merlin antibody (Cat#4349). Total cell lysates (30 µg) from various cell lines were loaded and separated by SDS-PAGE. The blot was incubated with anti-NF2 / Merlin antibody (Cat#4349, 1:5,000) and HRP-conjugated goat anti-rabbit secondary antibody (Cat#201, 1:20,000) respectively. Image was developed using NaQ™ ECL Substrate Kit (Cat#716).