

Anti-Carbonic anhydrase II Recombinant Rabbit Monoclonal Antibody



Catalog #: 4353

Aliases

CA2; Carbonic Anhydrase 2; CA-II; Carbonic Anhydrase II; CAII; Carbonate Dehydratase II; Cyanamide Hydratase CA2; Carbonic Anhydrase C; EC 4.2.1.1; Car2; CAC; Epididymis Secretory Protein Li 282; Epididymis Luminal Protein 76; Carbonic Anhydrase B; Carbonic Dehydratase; EC 4.2.1.69; HEL-S-282; HEL-76; CAR2

Background

Gene Name: CA2

NCBI Gene Entry: [760](#)

UniProt Entry: [P00918](#)

Application Information

Molecular Weight: Predicted, 29 kDa; observed, 29 kDa

Clonality: Rabbit monoclonal antibody

Clone ID: 24GB10795

Species Reactivity: Human, rat

Applications Tested: Western blotting (WB), flow cytometry (FCM), immunocytochemistry (IC)

Immunogen

A synthesized peptide derived from human Carbonic anhydrase 2

Isotype

Rabbit IgG

Storage Buffer

Supplied in PBS (pH 7.4) containing 50% glycerol, and 0.02% sodium azide.

Storage

Store at -20 °C for one year.

Recommended Dilutions

Western Blotting (WB): 1:1,000-1:5,000

Flow Cytometry (FCM): 1:2,000

Immunocytochemistry (IC): 1:100-1:1,000

SUPPORT

SUPPORT@GENUINBIOTECH.COM
TEL: +1-540-855-7041

ORDERS

SALES@GENUINBIOTECH.COM
FAX: +1-540-855-7041

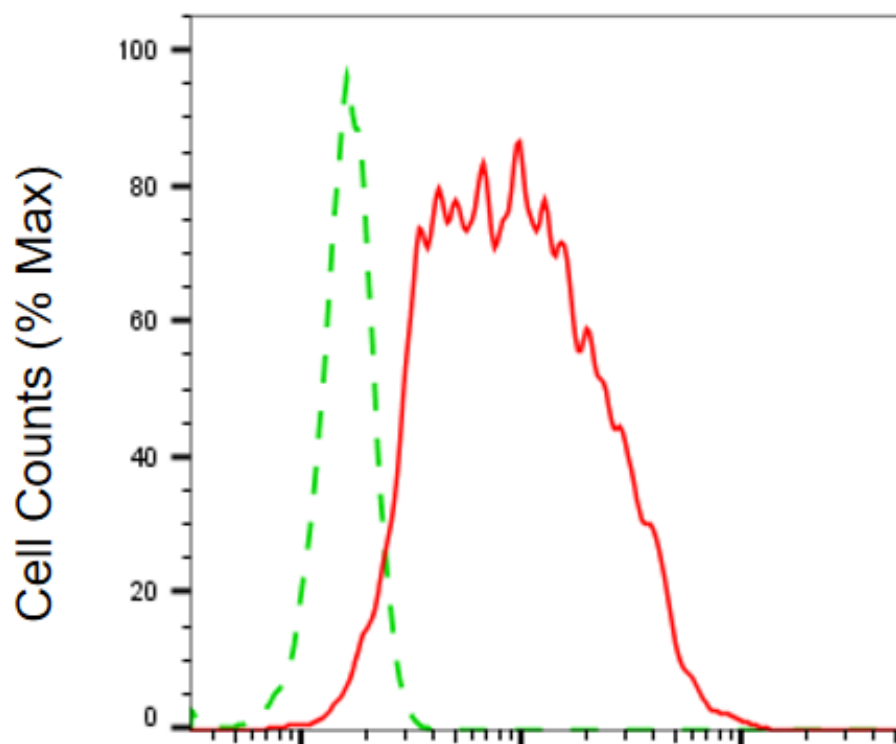
WWW.GENUINBIOTECH.COM

Anti-Carbonic anhydrase II Recombinant Rabbit Monoclonal Antibody

PAGE 2

Note: This product is for research use only.

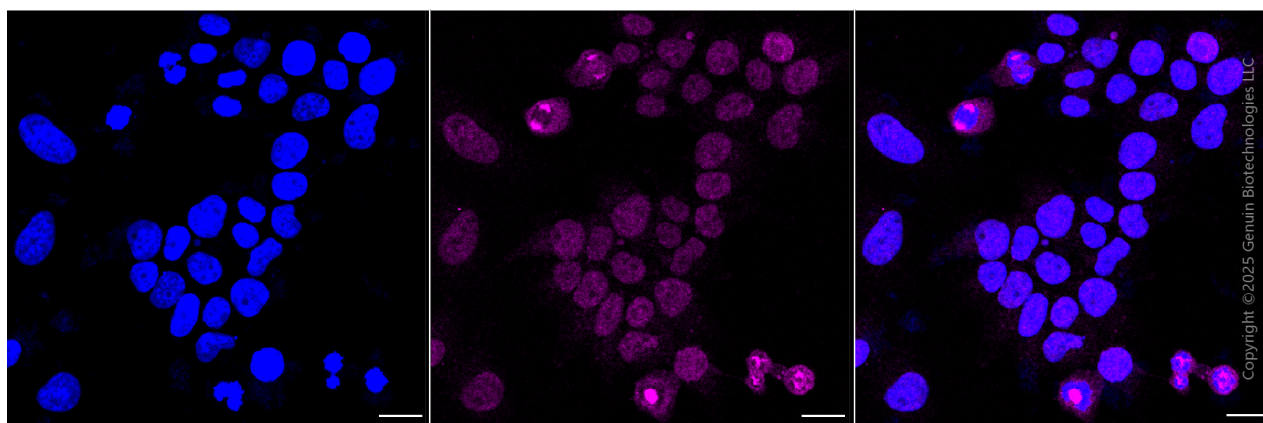
Validation Data



Copyright ©2025 Genuin Biotechnologies LLC

Carbonic anhydrase II-Alexa Fluor® 647

Flow cytometric analysis of Carbonic anhydrase II expression in HeLa cells using anti-Carbonic anhydrase II antibody (Cat#4353, 1:2,000). Green, isotype control; red, Carbonic anhydrase II.



Copyright ©2025 Genuin Biotechnologies LLC

Immunocytochemical staining of HeLa cells with anti-Carbonic anhydrase II antibody (Cat#4353,

SUPPORT

SUPPORT@GENUINBIOTECH.COM
TEL: +1-540-855-7041

ORDERS

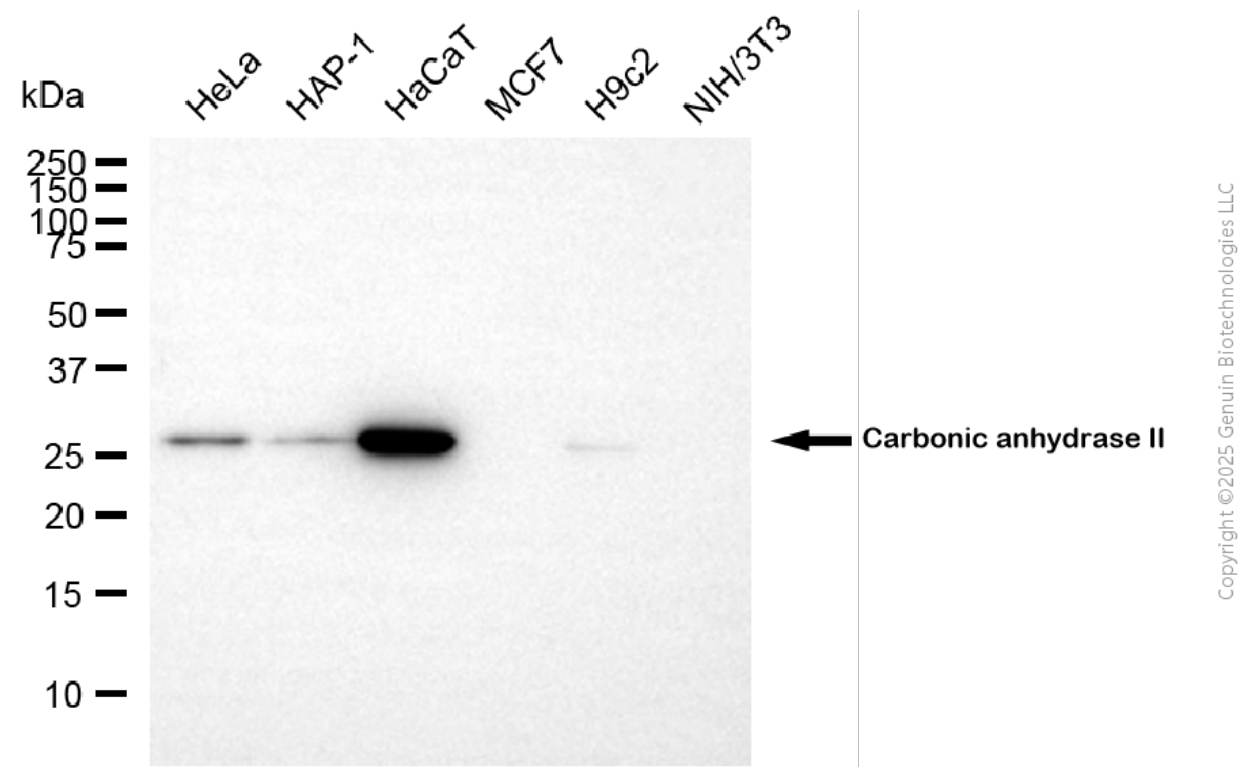
SALES@GENUINBIOTECH.COM
FAX: +1-540-855-7041

WWW.GENUINBIOTECH.COM

Anti-Carbonic anhydrase II Recombinant Rabbit Monoclonal Antibody

PAGE 3

1:1,000). Nuclei were stained blue with DAPI; Carbonic anhydrase II was stained magenta with Alexa Fluor® 647. Images were taken using Leica stellaris 5. Protein abundance based on laser Intensity and smart gain: Medium. Scale bar, 20 µm.



Western blotting analysis using anti-carbonic anhydrase II antibody (Cat#4353). Total cell lysates (30 µg) from various cell lines were loaded and separated by SDS-PAGE. The blot was incubated with anti-carbonic anhydrase II antibody (Cat#4353, 1:5,000) and HRP-conjugated goat anti-rabbit secondary antibody (Cat#201, 1:20,000) respectively. Image was developed using NaQ™ ECL Substrate Kit (Cat#716).

SUPPORT

SUPPORT@GENUINBIOTECH.COM
TEL: +1-540-855-7041

ORDERS

SALES@GENUINBIOTECH.COM
FAX: +1-540-855-7041

WWW.GENUINBIOTECH.COM