

Anti-ROCK2 Recombinant Rabbit Monoclonal Antibody



Catalog #: 4354

Aliases

ROCK2; Rho Associated Coiled-Coil Containing Protein Kinase 2; Rho-Associated, Coiled-Coil-Containing Protein Kinase II; Rho-Associated Protein Kinase 2; P164 ROCK-2; EC 2.7.11.1; ROCK-II; Rho-Associated, Coiled-Coil-Containing Protein Kinase 2; Rho Kinase 2; EC 2.7.11; KIAA0619

Background

Gene Name: ROCK2

NCBI Gene Entry: [9475](#)

UniProt Entry: [O75116](#)

Application Information

Molecular Weight: Predicted, 161 kDa; observed, 161 kDa

Clonality: Rabbit monoclonal antibody

Clone ID: 24GB10800

Species Reactivity: Human, mouse, rat

Applications Tested: Western blotting (WB), flow cytometry (FCM), immunocytochemistry (IC)

Immunogen

A synthesized peptide derived from human ROCK2

Isotype

Rabbit IgG

Storage Buffer

Supplied in PBS (pH 7.4) containing 50% glycerol, and 0.02% sodium azide.

Storage

Store at -20 °C for one year.

Recommended Dilutions

Western Blotting (WB): 1:1,000-1:5,000

Flow Cytometry (FCM): 1:2,000

Immunocytochemistry (IC): 1:100-1:1,000

SUPPORT

SUPPORT@GENUINBIOTECH.COM
TEL: +1-540-855-7041

ORDERS

SALES@GENUINBIOTECH.COM
FAX: +1-540-855-7041

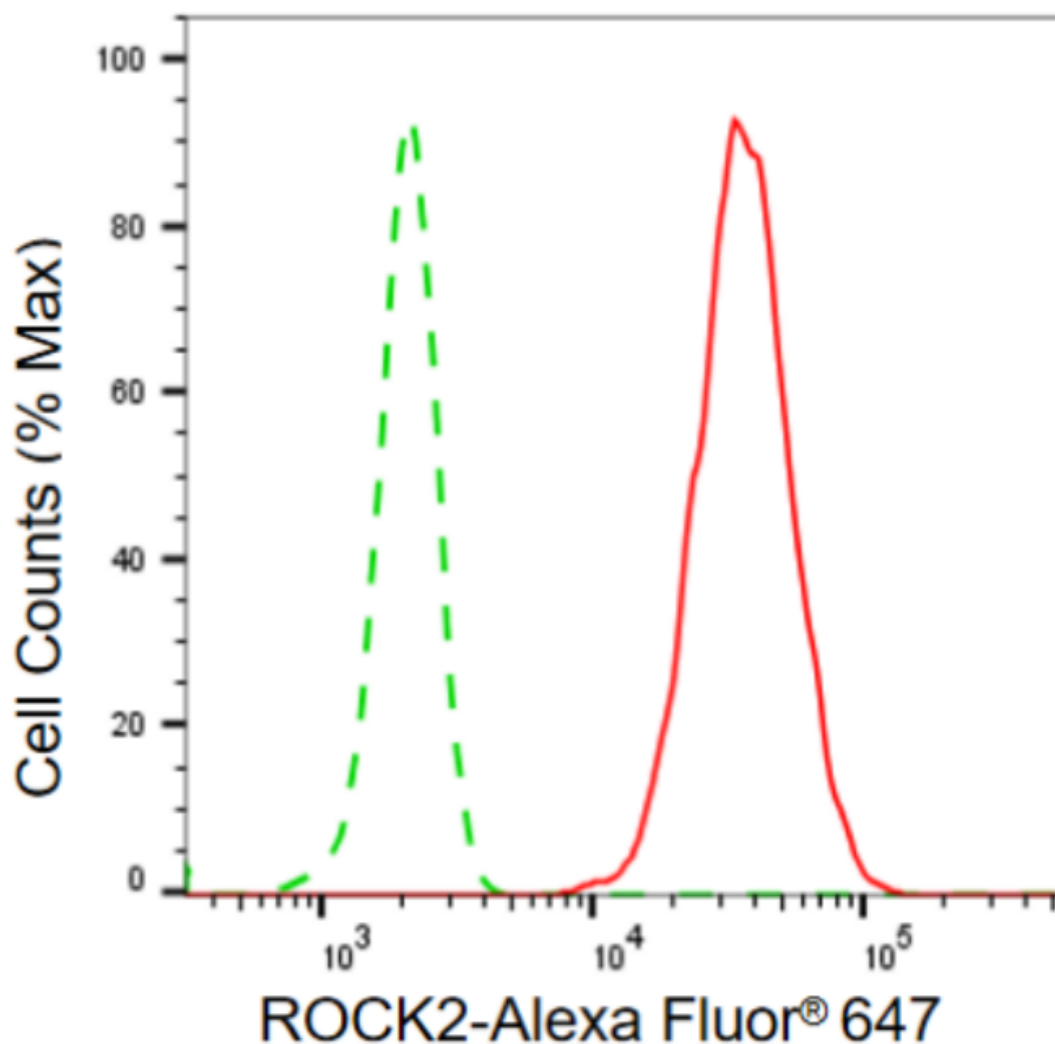
WWW.GENUINBIOTECH.COM

Anti-ROCK2 Recombinant Rabbit Monoclonal Antibody

PAGE 2

Note: This product is for research use only.

Validation Data



Copyright ©2024 Genuin Biotechnologies LLC

Flow cytometric analysis of ROCK2 expression in HepG2 cells using anti-ROCK2 antibody (Cat#4354, 1:2,000). Green, isotype control; red, ROCK2.

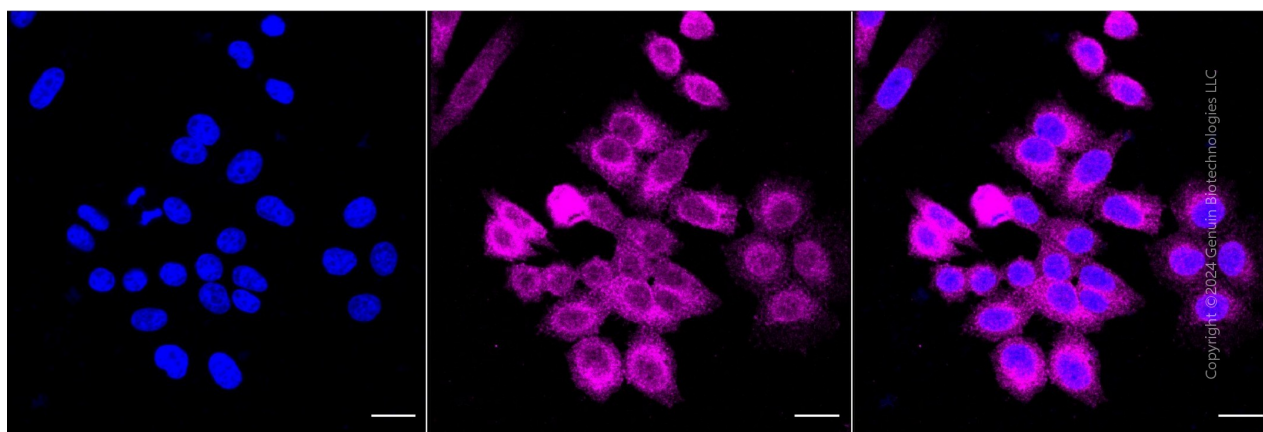
SUPPORT

SUPPORT@GENUINBIOTECH.COM
TEL: +1-540-855-7041

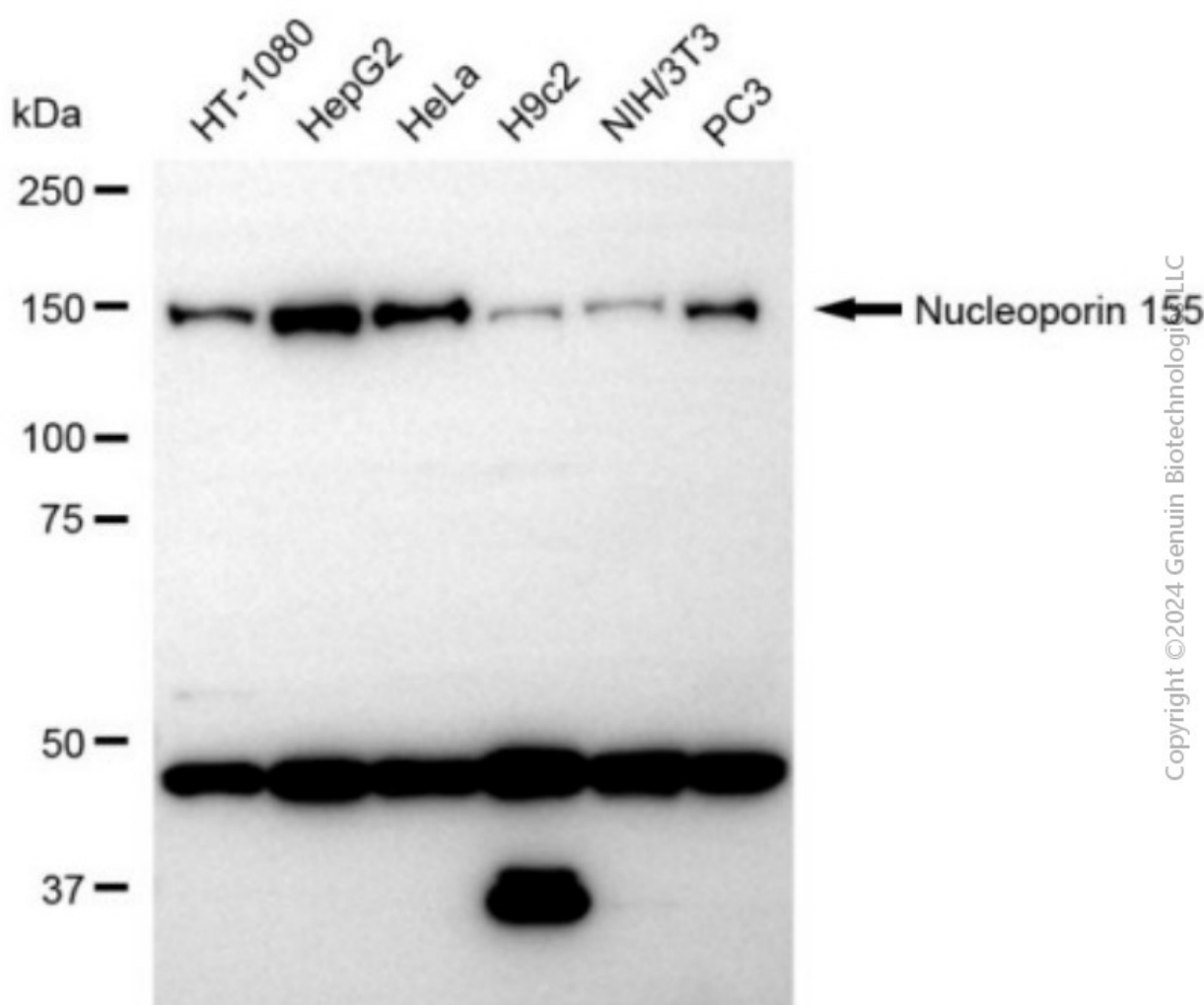
ORDERS

SALES@GENUINBIOTECH.COM
FAX: +1-540-855-7041

WWW.GENUINBIOTECH.COM



Immunocytochemical staining of HepG2 cells with anti-ROCK2 antibody (Cat#4354, 1:1,000). Nuclei were stained blue with DAPI; ROCK2 cochaperone 3 was stained magenta with Alexa Fluor® 647. Images were taken using Leica stellaris 5. Protein abundance based on laser Intensity and smart gain: Medium. Scale bar, 20 µm.



Western blotting analysis using anti-ROCK2 antibody (Cat#4354). Total cell lysates (30 µg) from

SUPPORT

SUPPORT@GENUINBIOTECH.COM
TEL: +1-540-855-7041

ORDERS

SALES@GENUINBIOTECH.COM
FAX: +1-540-855-7041

WWW.GENUINBIOTECH.COM

Anti-ROCK2 Recombinant Rabbit Monoclonal Antibody

PAGE 4

various cell lines were loaded and separated by SDS-PAGE. The blot was incubated with anti-ROCK2 antibody (Cat#4354, 1:5,000) and HRP-conjugated goat anti-rabbit secondary antibody (Cat#201, 1:20,000) respectively. Image was developed using NaQ™ ECL Substrate Kit (Cat#716).

SUPPORT

SUPPORT@GENUINBIOTECH.COM
TEL: +1-540-855-7041

ORDERS

SALES@GENUINBIOTECH.COM
FAX: +1-540-855-7041

WWW.GENUINBIOTECH.COM