

# Anti-Contactin associated protein 1 Recombinant Rabbit Monoclonal Antibody



**Catalog #: 4360**

## Aliases

CNTNAP1; Contactin Associated Protein 1; P190; CNTNAP; CASPR; NRXN4; Contactin-Associated Protein 1; Neurexin IV; Neurexin-4; Caspr1; Caspr; Neurexin 4; CHN3

## Background

Gene Name: CNTNAP1

NCBI Gene Entry: [8506](#)

UniProt Entry: [P78357](#)

## Application Information

Molecular Weight: Predicted, 156 kDa; observed, 165 kDa

Clonality: Rabbit monoclonal antibody

Clone ID: 24GB10830

Species Reactivity: Human, mouse

Applications Tested: Western blotting (WB), flow cytometry (FCM), immunocytochemistry (IC)

## Immunogen

A synthesized peptide derived from human Caspr

## Isotype

Rabbit IgG

## Storage Buffer

Supplied in PBS (pH 7.4) containing 50% glycerol, and 0.02% sodium azide.

## Storage

Store at -20 °C for one year.

## Recommended Dilutions

Western Blotting (WB): 1:1,000-1:5,000

Flow Cytometry (FCM): 1:2,000

Immunocytochemistry (IC): 1:100-1:1,000

**Note:** This product is for research use only.

## Validation Data

---

### SUPPORT

SUPPORT@GENUINBIOTECH.COM  
TEL: +1-540-855-7041

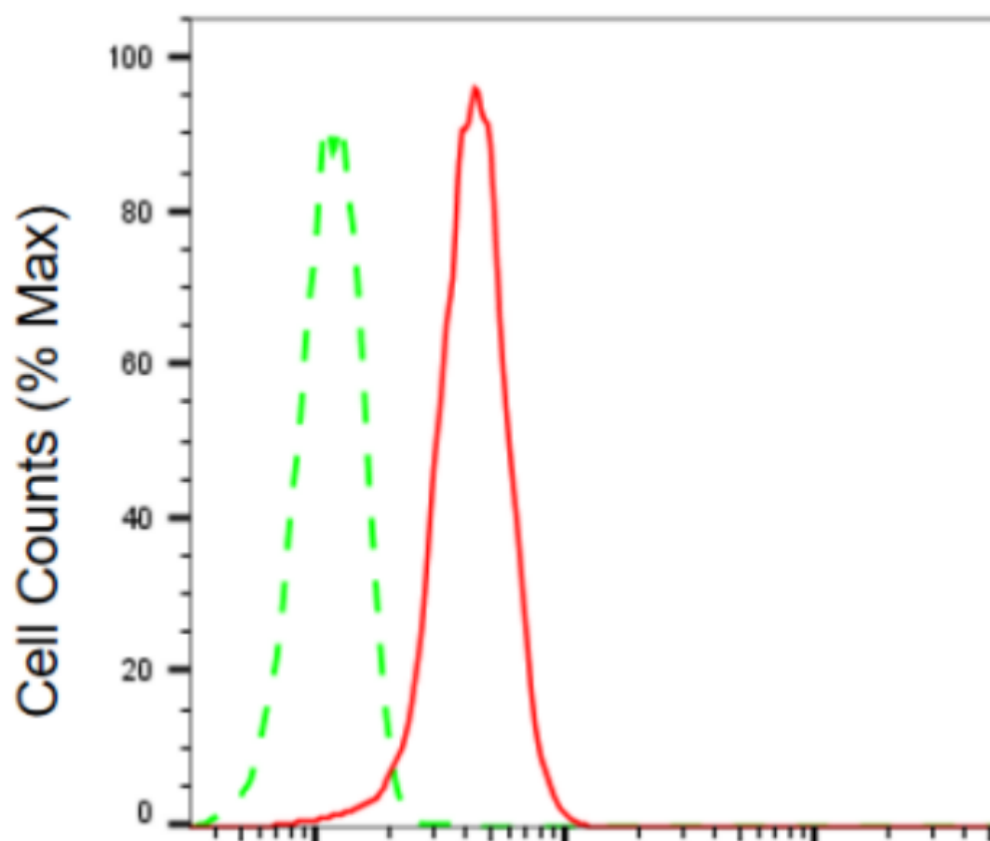
### ORDERS

SALES@GENUINBIOTECH.COM  
FAX: +1-540-855-7041

[WWW.GENUINBIOTECH.COM](http://WWW.GENUINBIOTECH.COM)

## Anti-Contactin associated protein 1 Recombinant Rabbit Monoclonal Antibody

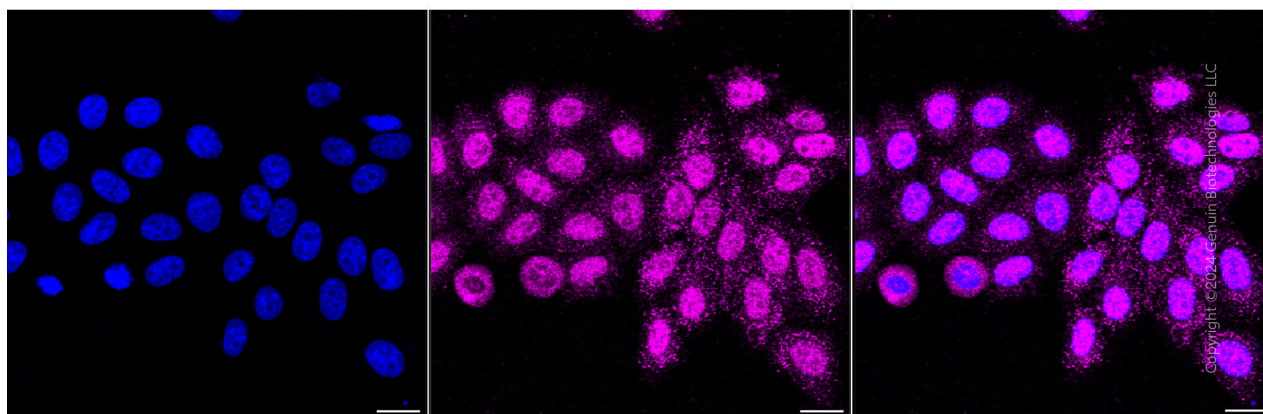
PAGE 2



Copyright ©2024 Genuin Biotechnologies LLC

### Contactin associated protein 1-Alexa Fluor® 647

Flow cytometric analysis of contactin associated protein 1 expression in HepG2 cells using anti-contactin associated protein 1 antibody (Cat#4360, 1:2,000). Green, isotype control; red, contactin associated protein 1.



Copyright ©2024 Genuin Biotechnologies LLC

Immunocytochemical staining of HepG2 cells with anti-Contactin associated protein 1 antibody (Cat#4360, 1:1,000). Nuclei were stained blue with DAPI; Contactin associated protein 1 was stained magenta with Alexa Fluor® 647. Images were taken using Leica stellaris 5. Protein

#### SUPPORT

SUPPORT@GENUINBIOTECH.COM  
TEL: +1-540-855-7041

#### ORDERS

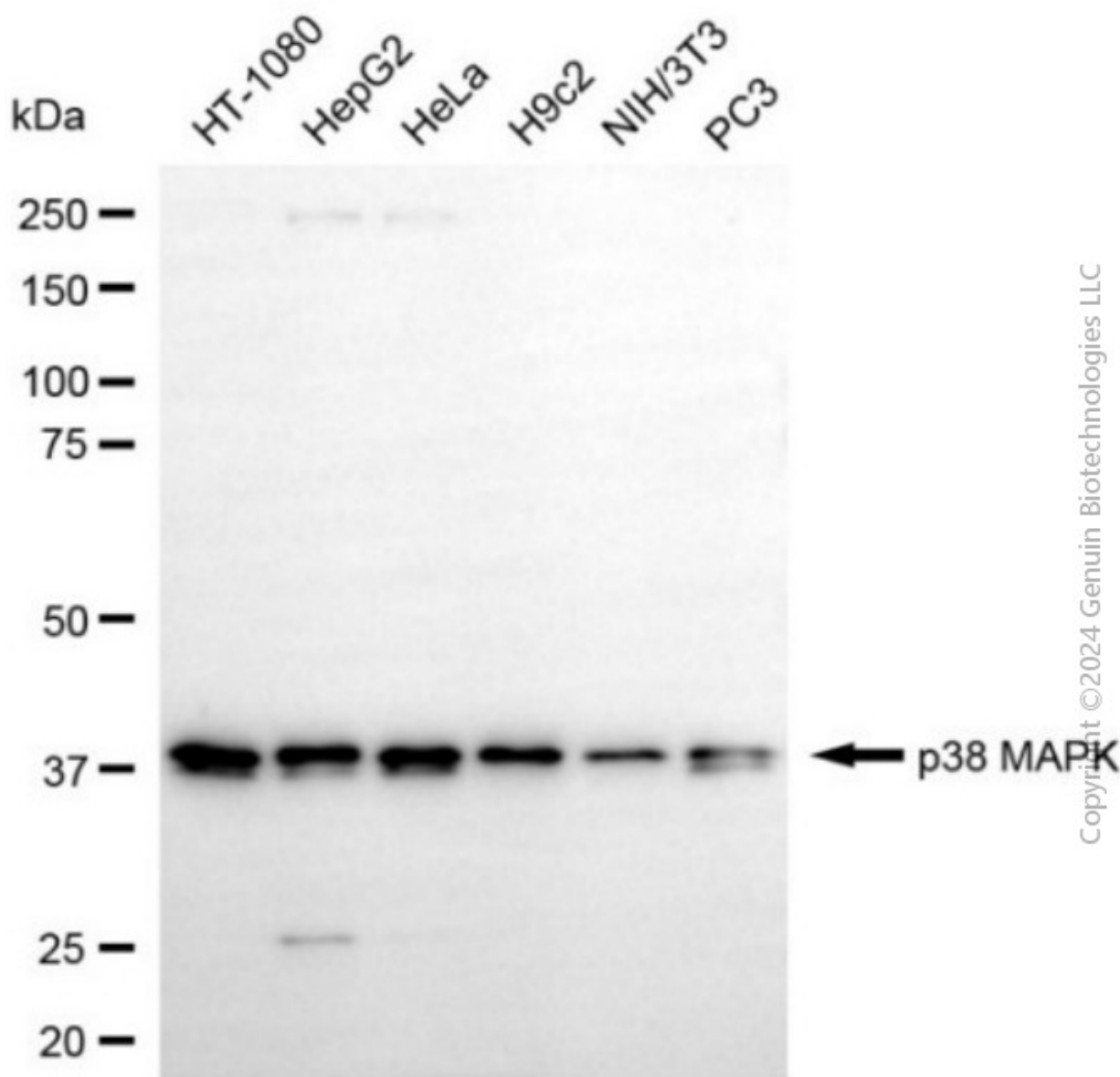
SALES@GENUINBIOTECH.COM  
FAX: +1-540-855-7041

WWW.GENUINBIOTECH.COM

## Anti-Contactin associated protein 1 Recombinant Rabbit Monoclonal Antibody

PAGE 3

abundance based on laser Intensity and smart gain: Medium. Scale bar, 20  $\mu$ m.



Western blotting analysis using anti-contactin associated protein 1 antibody (Cat#4360). Total cell lysates (30  $\mu$ g) from various cell lines were loaded and separated by SDS-PAGE. The blot was incubated with anti-contactin associated protein 1 antibody (Cat#4360, 1:5,000) and HRP-conjugated goat anti-rabbit secondary antibody (Cat#201, 1:20,000) respectively. Image was developed using NaQ™ ECL Substrate Kit (Cat#716).

### SUPPORT

SUPPORT@GENUINBIOTECH.COM  
TEL: +1-540-855-7041

### ORDERS

SALES@GENUINBIOTECH.COM  
FAX: +1-540-855-7041

[WWW.GENUINBIOTECH.COM](http://WWW.GENUINBIOTECH.COM)