

Anti-Dynamin 2 Recombinant Rabbit Monoclonal Antibody



Catalog #: 4363

Aliases

DNM2; Dynamin 2; DYN2; DI-CMTB; CMTDIB; CMTDI1; DYNII; CMT2M; Dynamin II; EC 3.6.5.5; Dynamin-2; Cytoskeletal Protein; LCCS5

Background

Gene Name: DNM2

NCBI Gene Entry: [1785](#)

UniProt Entry: [P50570](#)

Application Information

Molecular Weight: Predicted, 98 kDa; observed, 98 kDa

Clonality: Rabbit monoclonal antibody

Clone ID: 24GB10845

Species Reactivity: Human, mouse, rat

Applications Tested: Western blotting (WB), flow cytometry (FCM), immunocytochemistry (IC)

Immunogen

A synthesized peptide derived from human Dynamin 2

Isotype

Rabbit IgG

Storage Buffer

Supplied in PBS (pH 7.4) containing 50% glycerol, and 0.02% sodium azide.

Storage

Store at -20 °C for one year.

Recommended Dilutions

Western Blotting (WB): 1:1,000-1:5,000

Flow Cytometry (FCM): 1:2,000

Immunocytochemistry (IC): 1:100-1:1,000

Note: This product is for research use only.

Validation Data

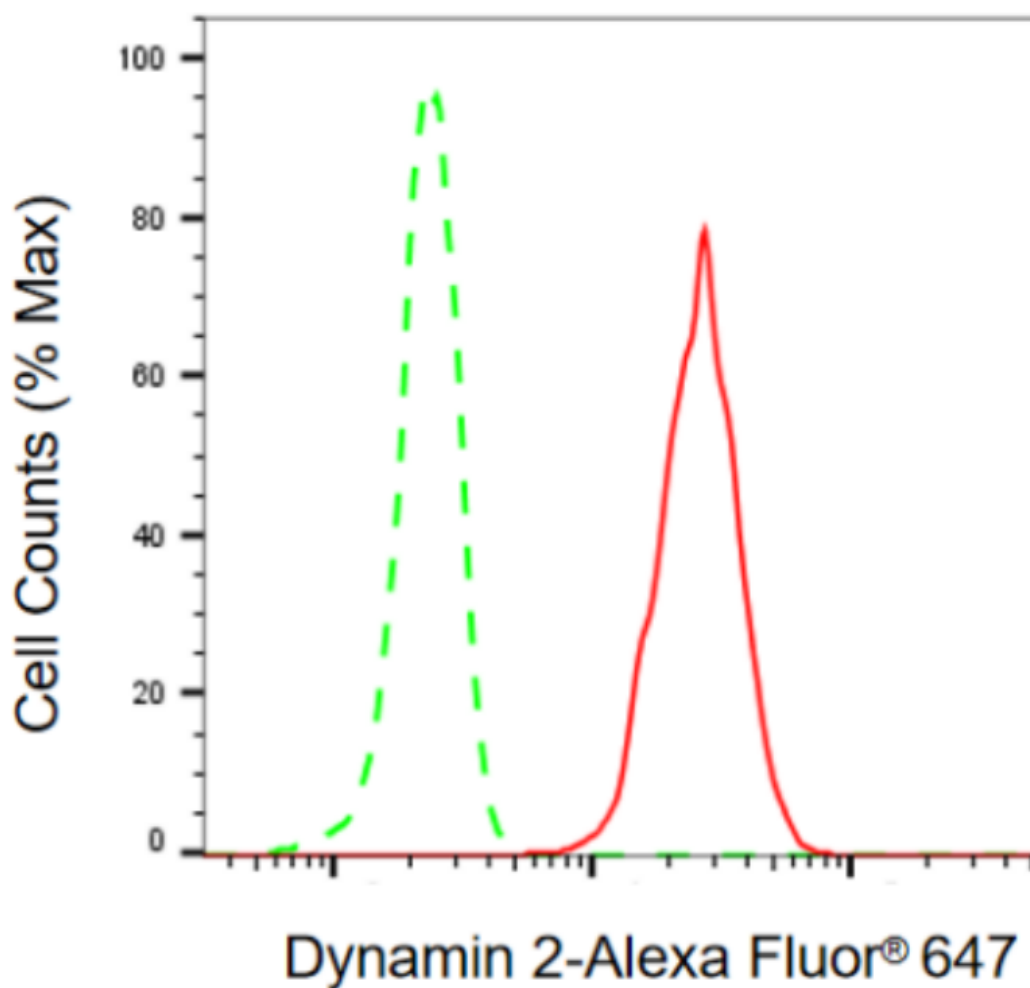
SUPPORT

SUPPORT@GENUINBIOTECH.COM
TEL: +1-540-855-7041

ORDERS

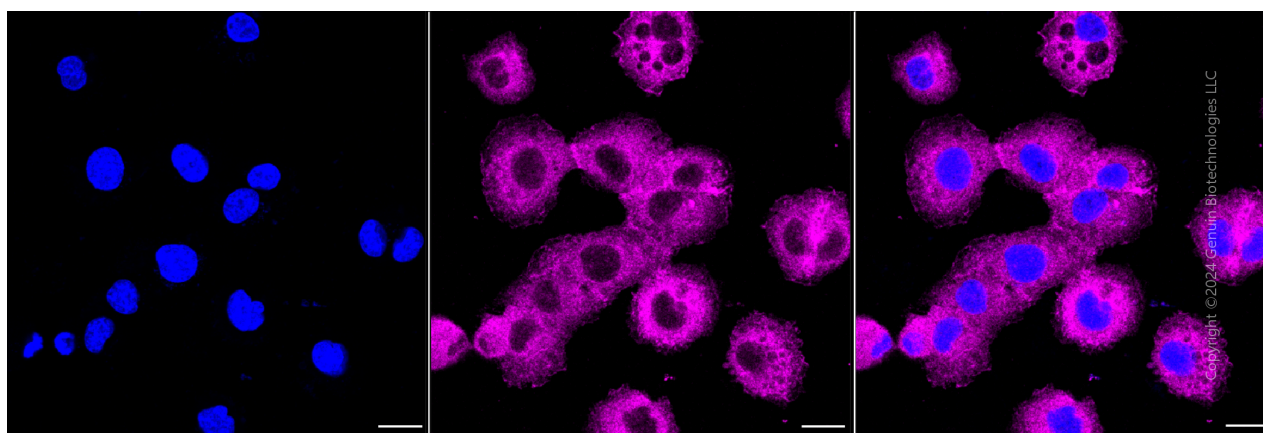
SALES@GENUINBIOTECH.COM
FAX: +1-540-855-7041

WWW.GENUINBIOTECH.COM



Copyright ©2024 Genuin Biotechnologies LLC

Flow cytometric analysis of dynamin 2 expression in HT-1080 cells using anti-dynamin 2 antibody (Cat#4363, 1:2,000). Green, isotype control; red, dynamin 2.



Copyright ©2024 Genuin Biotechnologies LLC

Immunocytochemical staining of HT-1080 cells with anti-dynamin 2 antibody (Cat#4363, 1:1,000). Nuclei were stained blue with DAPI; Dynamin 2 was stained magenta with Alexa

SUPPORT

SUPPORT@GENUINBIOTECH.COM
TEL: +1-540-855-7041

ORDERS

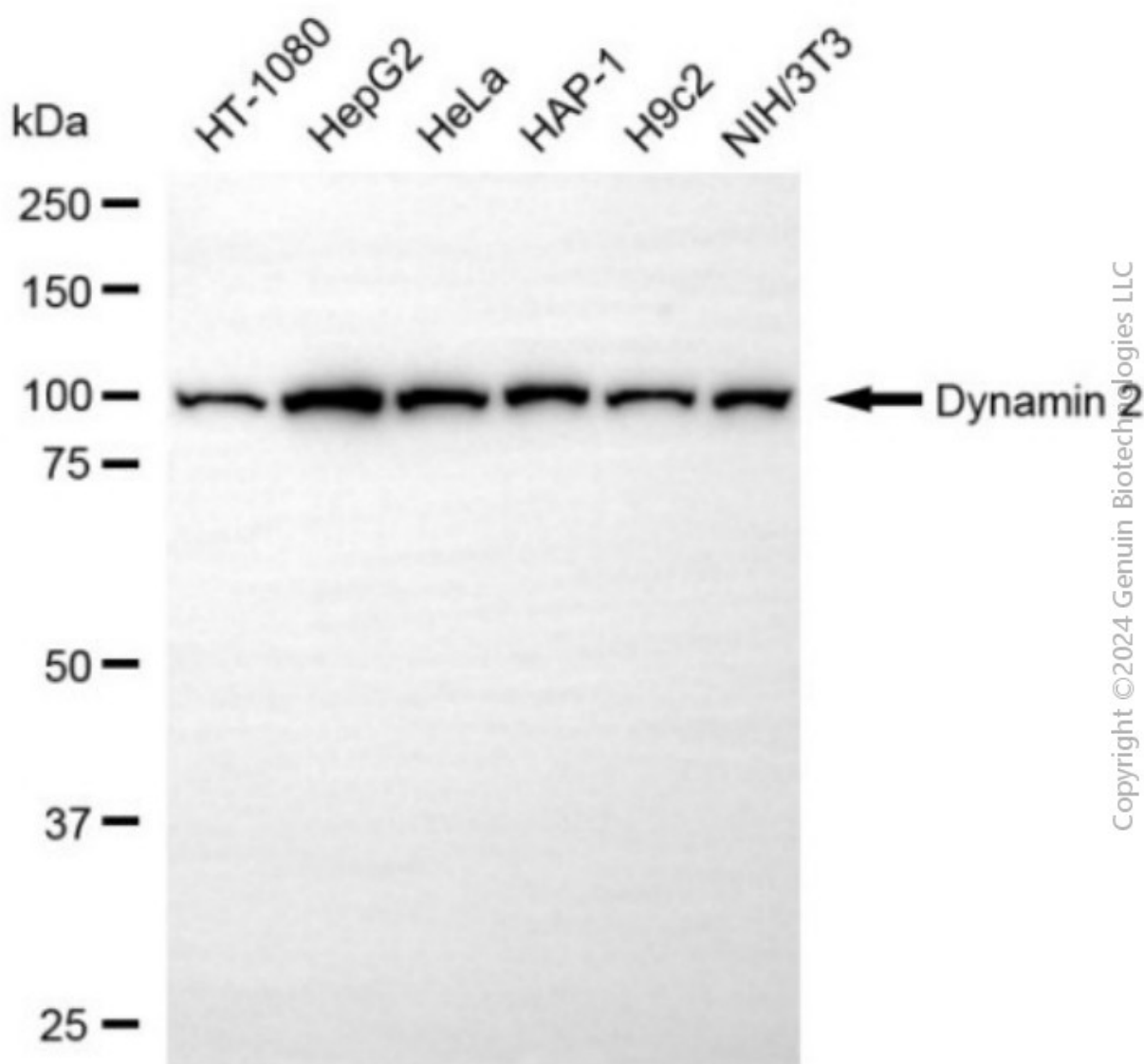
SALES@GENUINBIOTECH.COM
FAX: +1-540-855-7041

WWW.GENUINBIOTECH.COM

Anti-Dynamin 2 Recombinant Rabbit Monoclonal Antibody

PAGE 3

Fluor® 647. Images were taken using Leica stellaris 5. Protein abundance based on laser Intensity and smart gain: Medium. Scale bar, 20 μ m.



Western blotting analysis using anti-dynamin 2 antibody (Cat#4363). Total cell lysates (30 μ g) from various cell lines were loaded and separated by SDS-PAGE. The blot was incubated with anti-dynamin 2 antibody (Cat#4363, 1:5,000) and HRP-conjugated goat anti-rabbit secondary antibody (Cat#201, 1:20,000) respectively. Image was developed using NaQ™ ECL Substrate Kit (Cat#716).

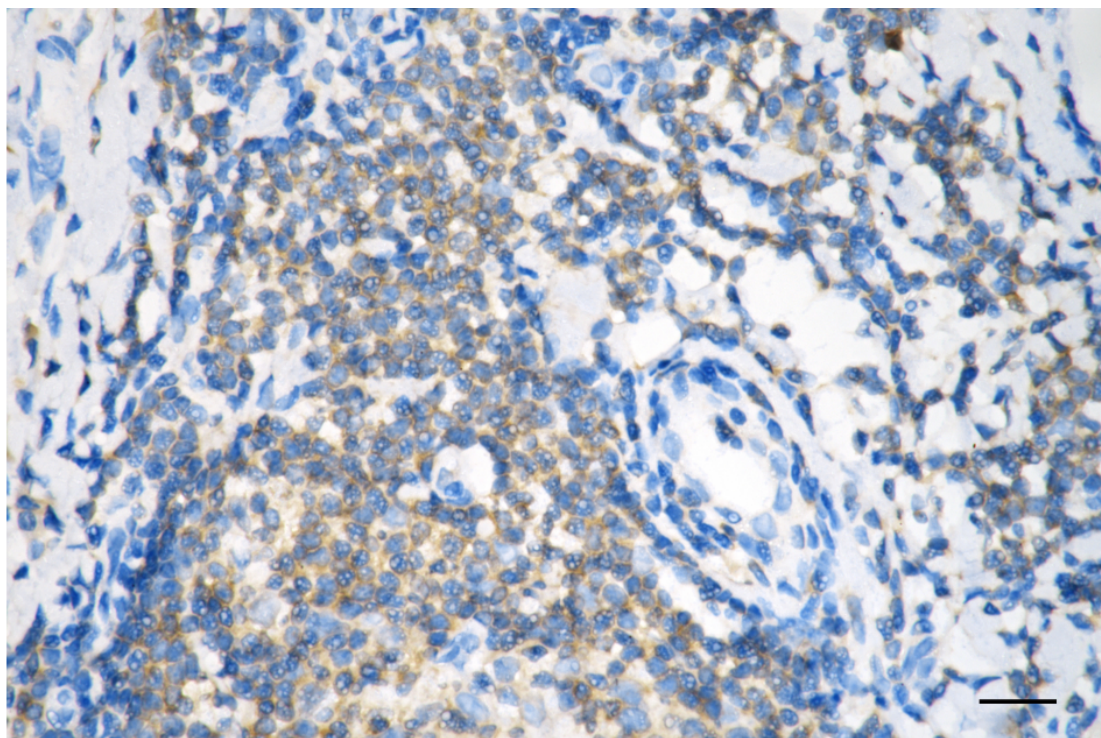
SUPPORT

SUPPORT@GENUINBIOTECH.COM
TEL: +1-540-855-7041

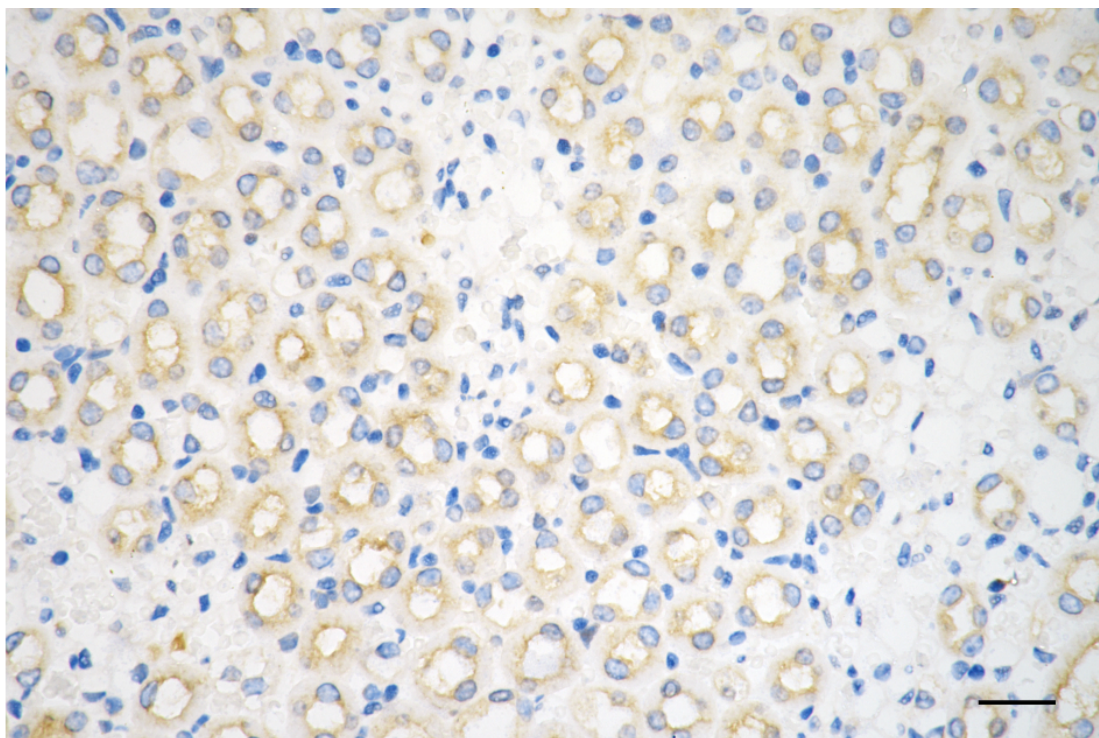
ORDERS

SALES@GENUINBIOTECH.COM
FAX: +1-540-855-7041

WWW.GENUINBIOTECH.COM



Immunohistochemistry was performed on paraffin-embedded human breast carcinoma using anti-dynamin 2 antibody (Cat#4363, 1:200). Antigen retrieval was done in sodium citrate buffer (pH 6.0). DAB was used for detection, with hematoxylin counterstaining. Images were acquired using a Nikon Ci-L Plus microscope (40× objective). Scale bar: 25 μ m.



Copyright ©2025 Genuin Biotechnologies LLC

SUPPORT

SUPPORT@GENUINBIOTECH.COM
TEL: +1-540-855-7041

ORDERS

SALES@GENUINBIOTECH.COM
FAX: +1-540-855-7041

WWW.GENUINBIOTECH.COM

Anti-Dynamin 2 Recombinant Rabbit Monoclonal Antibody

PAGE 5

Immunohistochemistry was performed on paraffin-embedded mouse kidney using anti-dynamin 2 antibody (Cat#4363, 1:200). Antigen retrieval was done in sodium citrate buffer (pH 6.0). DAB was used for detection, with hematoxylin counterstaining. Images were acquired using a Nikon Ci-L Plus microscope (40× objective). Scale bar: 25 μ m.

SUPPORT

SUPPORT@GENUINBIOTECH.COM
TEL: +1-540-855-7041

ORDERS

SALES@GENUINBIOTECH.COM
FAX: +1-540-855-7041

WWW.GENUINBIOTECH.COM