

Anti-LDL receptor related protein 8 Recombinant Rabbit Monoclonal Antibody



Catalog #: 4364

Aliases

LRP8; LDL Receptor Related Protein 8; APOER2; LRP-8; HSZ75190; MCI1; Low Density Lipoprotein Receptor-Related Protein 8, Apolipoprotein E Receptor; Low-Density Lipoprotein Receptor-Related Protein 8; Apolipoprotein E Receptor 2; ApoE Receptor 2

Background

Gene Name: LRP8

NCBI Gene Entry: [7804](#)

UniProt Entry: [Q14114](#)

Application Information

Molecular Weight: Predicted, 106 kDa; observed, 106 kDa

Clonality: Rabbit monoclonal antibody

Clone ID: 24GB10850

Species Reactivity: Human, mouse, rat

Applications Tested: Western blotting (WB), flow cytometry (FCM), immunocytochemistry (IC)

Immunogen

A synthesized peptide derived from human ApoER2

Isotype

Rabbit IgG

Storage Buffer

Supplied in PBS (pH 7.4) containing 50% glycerol, and 0.02% sodium azide.

Storage

Store at -20 °C for one year.

Recommended Dilutions

Western Blotting (WB): 1:1,000-1:5,000

Flow Cytometry (FCM): 1:2,000

Immunocytochemistry (IC): 1:100-1:1,000

Note: This product is for research use only.

SUPPORT

SUPPORT@GENUINBIOTECH.COM
TEL: +1-540-855-7041

ORDERS

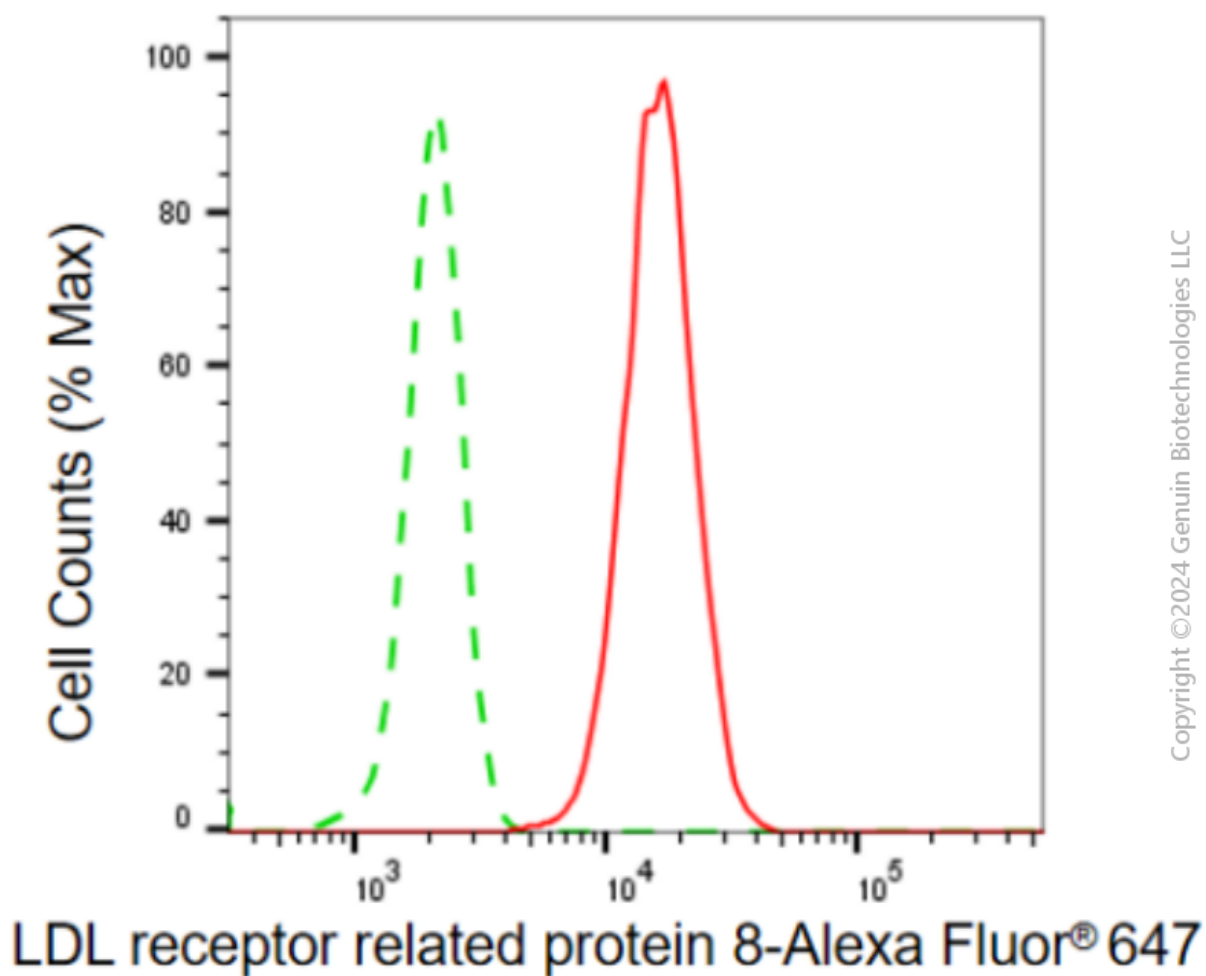
SALES@GENUINBIOTECH.COM
FAX: +1-540-855-7041

WWW.GENUINBIOTECH.COM

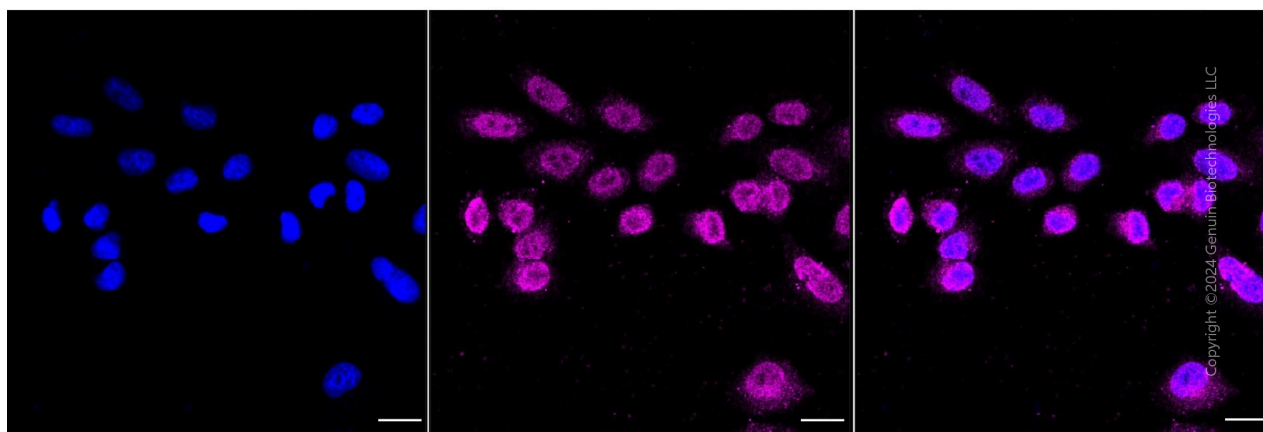
Anti-LDL receptor related protein 8 Recombinant Rabbit Monoclonal Antibody

PAGE 2

Validation Data



Flow cytometric analysis of LDL receptor related protein 8 expression in HepG2 cells using anti-LDL receptor related protein 8 antibody (Cat#4364, 1:2,000). Green, isotype control; red, LDL receptor related protein 8.



SUPPORT

SUPPORT@GENUINBIOTECH.COM
TEL: +1-540-855-7041

ORDERS

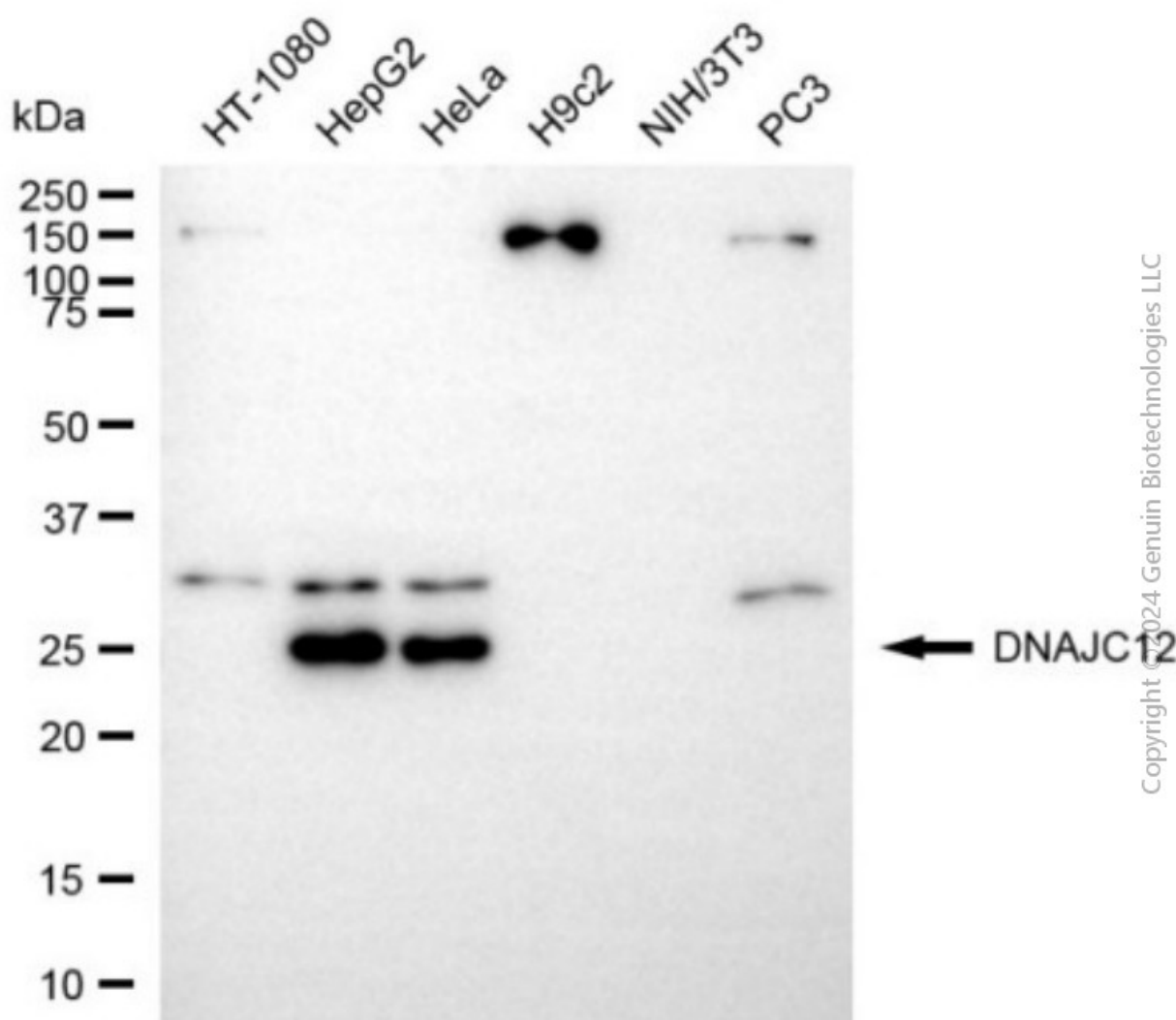
SALES@GENUINBIOTECH.COM
FAX: +1-540-855-7041

WWW.GENUINBIOTECH.COM

Anti-LDL receptor related protein 8 Recombinant Rabbit Monoclonal Antibody

PAGE 3

Immunocytochemical staining of HepG2 cells with anti-LDL receptor related protein 8 antibody (Cat#4364, 1:1,000). Nuclei were stained blue with DAPI; LDL receptor related protein 8 was stained magenta with Alexa Fluor® 647. Images were taken using Leica stellaris 5. Protein abundance based on laser Intensity and smart gain: Medium. Scale bar, 20 µm.



Western blotting analysis using anti-LDL receptor related protein 8 antibody (Cat#4364). Total cell lysates (30 µg) from various cell lines were loaded and separated by SDS-PAGE. The blot was incubated with anti-LDL receptor related protein 8 antibody (Cat#4364, 1:5,000) and HRP-conjugated goat anti-rabbit secondary antibody (Cat#201, 1:20,000) respectively. Image was developed using FeQ™ ECL Substrate Kit (Cat#226).

SUPPORT

SUPPORT@GENUINBIOTECH.COM
TEL: +1-540-855-7041

ORDERS

SALES@GENUINBIOTECH.COM
FAX: +1-540-855-7041

WWW.GENUINBIOTECH.COM