

Anti-Kinesin family member 11 Recombinant Rabbit Monoclonal Antibody



Catalog #: 4367

Aliases

KIF11; Kinesin Family Member 11; TRIP5; KNSL1; HKSP; EG5; Thyroid Receptor-Interacting Protein 5; Kinesin-Like Spindle Protein HKSP; Kinesin-Related Motor Protein Eg5; Kinesin-Like Protein KIF11; TR-Interacting Protein 5; Kinesin-Like Protein 1; TRIP-5; Kinesin-Like 1; MCLMR; Eg5

Background

Gene Name: KIF11

NCBI Gene Entry: [3832](#)

UniProt Entry: [P52732](#)

Application Information

Molecular Weight: Predicted, 119 kDa; observed, 119 kDa

Clonality: Rabbit monoclonal antibody

Clone ID: 24GB10865

Species Reactivity: Human

Applications Tested: Western blotting (WB), flow cytometry (FCM), immunocytochemistry (IC)

Immunogen

A synthesized peptide derived from human Eg5

Isotype

Rabbit IgG

Storage Buffer

Supplied in PBS (pH 7.4) containing 50% glycerol, and 0.02% sodium azide.

Storage

Store at -20 °C for one year.

Recommended Dilutions

Western Blotting (WB): 1:1,000-1:5,000

Flow Cytometry (FCM): 1:2,000

Immunocytochemistry (IC): 1:100-1:1,000

SUPPORT

SUPPORT@GENUINBIOTECH.COM
TEL: +1-540-855-7041

ORDERS

SALES@GENUINBIOTECH.COM
FAX: +1-540-855-7041

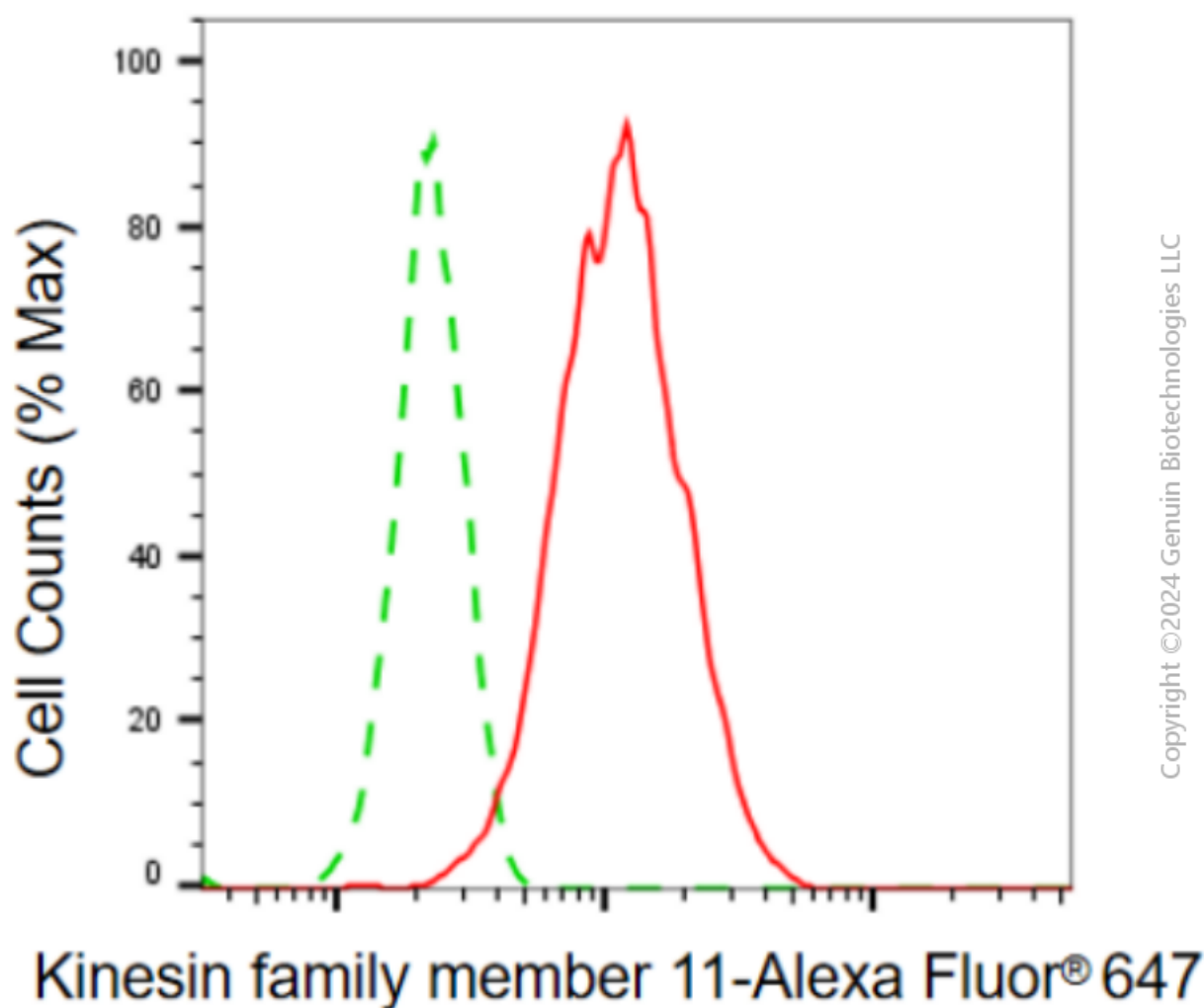
WWW.GENUINBIOTECH.COM

Anti-Kinesin family member 11 Recombinant Rabbit Monoclonal Antibody

PAGE 2

Note: This product is for research use only.

Validation Data



Flow cytometric analysis of kinesin family member 11 expression in HAP-1 cells using anti-kinesin family member 11 antibody (Cat#4367, 1:2,000). Green, isotype control; red, kinesin family member 11.

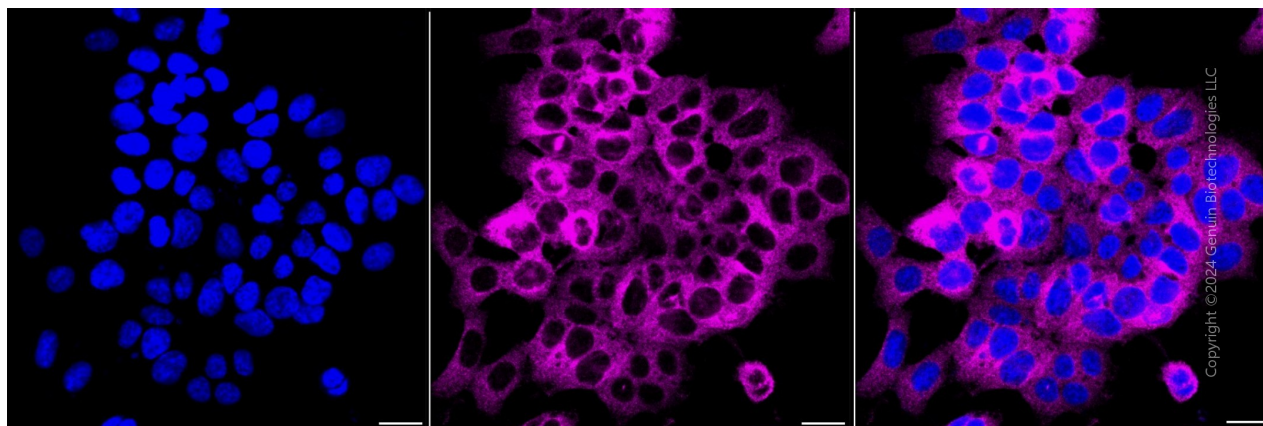
SUPPORT

SUPPORT@GENUINBIOTECH.COM
TEL: +1-540-855-7041

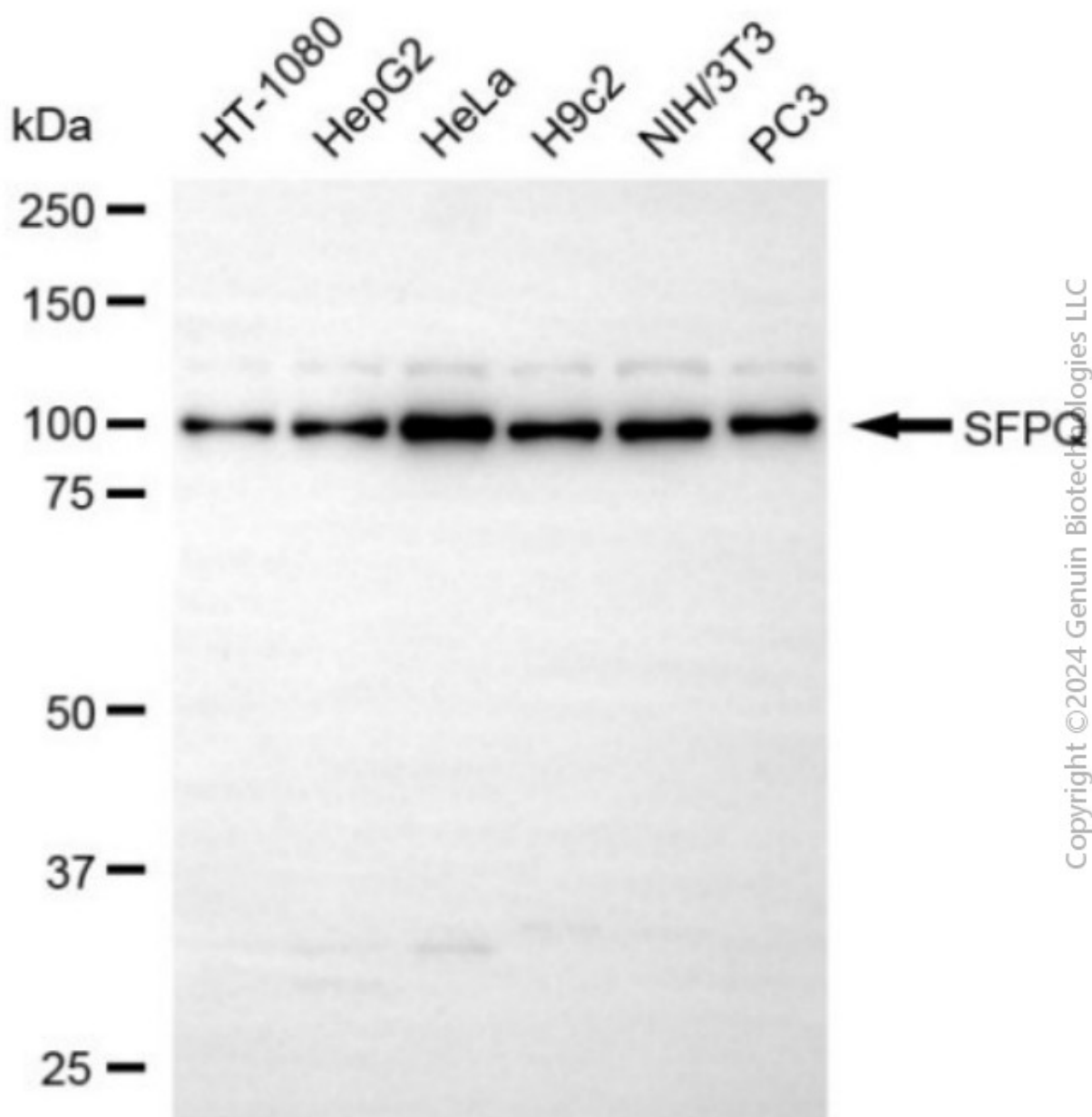
ORDERS

SALES@GENUINBIOTECH.COM
FAX: +1-540-855-7041

WWW.GENUINBIOTECH.COM



Immunocytochemical staining of HAP-1 cells with anti-Kinesin family member 11 antibody (Cat#4367, 1:1,000). Nuclei were stained blue with DAPI; Kinesin family member 11 was stained magenta with Alexa Fluor® 647. Images were taken using Leica stellaris 5. Protein abundance based on laser Intensity and smart gain: Medium. Scale bar, 20 μ m.



Western blotting analysis using anti-kinesin family member 11 antibody (Cat#4367). Total cell lysates (30 μ g) from various cell lines were loaded and separated by SDS-PAGE. The blot was incubated with anti-kinesin family member 11 antibody (Cat#4367, 1:5,000) and HRP-conjugated goat anti-rabbit secondary antibody (Cat#201, 1:20,000) respectively. Image was developed using NaQ™ ECL Substrate Kit (Cat#716).