

# Anti-MAP3K7 Recombinant Rabbit Monoclonal Antibody



**Catalog #: 4370**

## Aliases

MAP3K7; Mitogen-Activated Protein Kinase Kinase Kinase 7; MEKK7; TAK1; Transforming Growth Factor-Beta-Activated Kinase 1; TGF-Beta Activated Kinase 1; EC 2.7.11.25; TGF-Beta-Activated Kinase 1; EC 2.7.11; TGF1a; CSCF; FMD2

## Background

Gene Name: MAP3K7

NCBI Gene Entry: [6885](#)

UniProt Entry: [O43318](#)

## Application Information

Molecular Weight: Predicted, 67 kDa; observed, 75 kDa

Clonality: Rabbit monoclonal antibody

Clone ID: 24GB10880

Species Reactivity: Human, mouse, rat

Applications Tested: Western blotting (WB), flow cytometry (FCM), immunocytochemistry (IC)

## Immunogen

A synthesized peptide derived from human TAK1

## Isotype

Rabbit IgG

## Storage Buffer

Supplied in PBS (pH 7.4) containing 50% glycerol, and 0.02% sodium azide.

## Storage

Store at -20 °C for one year.

## Recommended Dilutions

Western Blotting (WB): 1:1,000-1:5,000

Flow Cytometry (FCM): 1:2,000

Immunocytochemistry (IC): 1:100-1:1,000

**Note:** This product is for research use only.

---

### SUPPORT

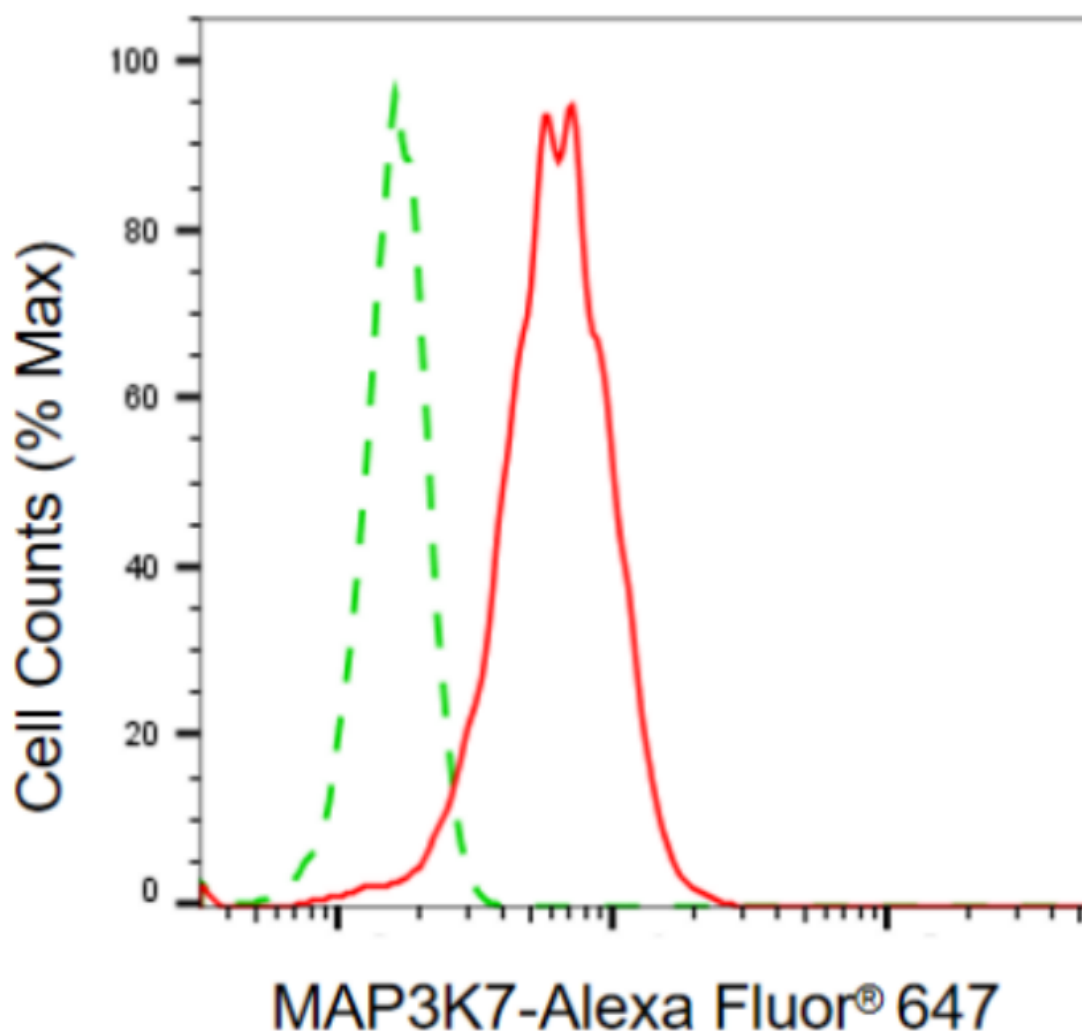
SUPPORT@GENUINBIOTECH.COM  
TEL: +1-540-855-7041

### ORDERS

SALES@GENUINBIOTECH.COM  
FAX: +1-540-855-7041

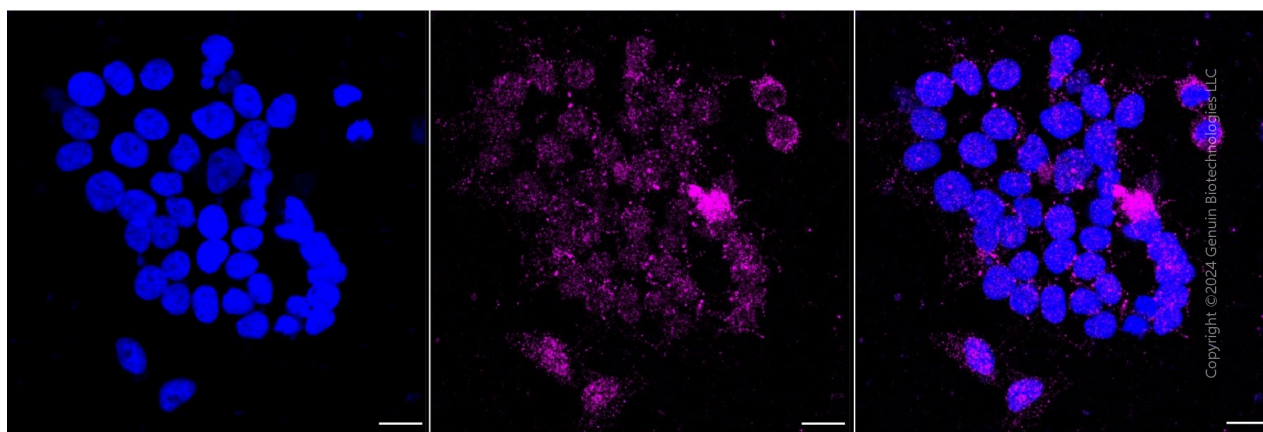
[WWW.GENUINBIOTECH.COM](http://WWW.GENUINBIOTECH.COM)

**Validation Data**



Copyright ©2024 Genuin Biotechnologies LLC

Flow cytometric analysis of MAP3K7 expression in HeLa cells using anti-MAP3K7 antibody (Cat#4370, 1:2,000). Green, isotype control; red, MAP3K7.



Copyright ©2024 Genuin Biotechnologies LLC

**SUPPORT**

SUPPORT@GENUINBIOTECH.COM  
TEL: +1-540-855-7041

**ORDERS**

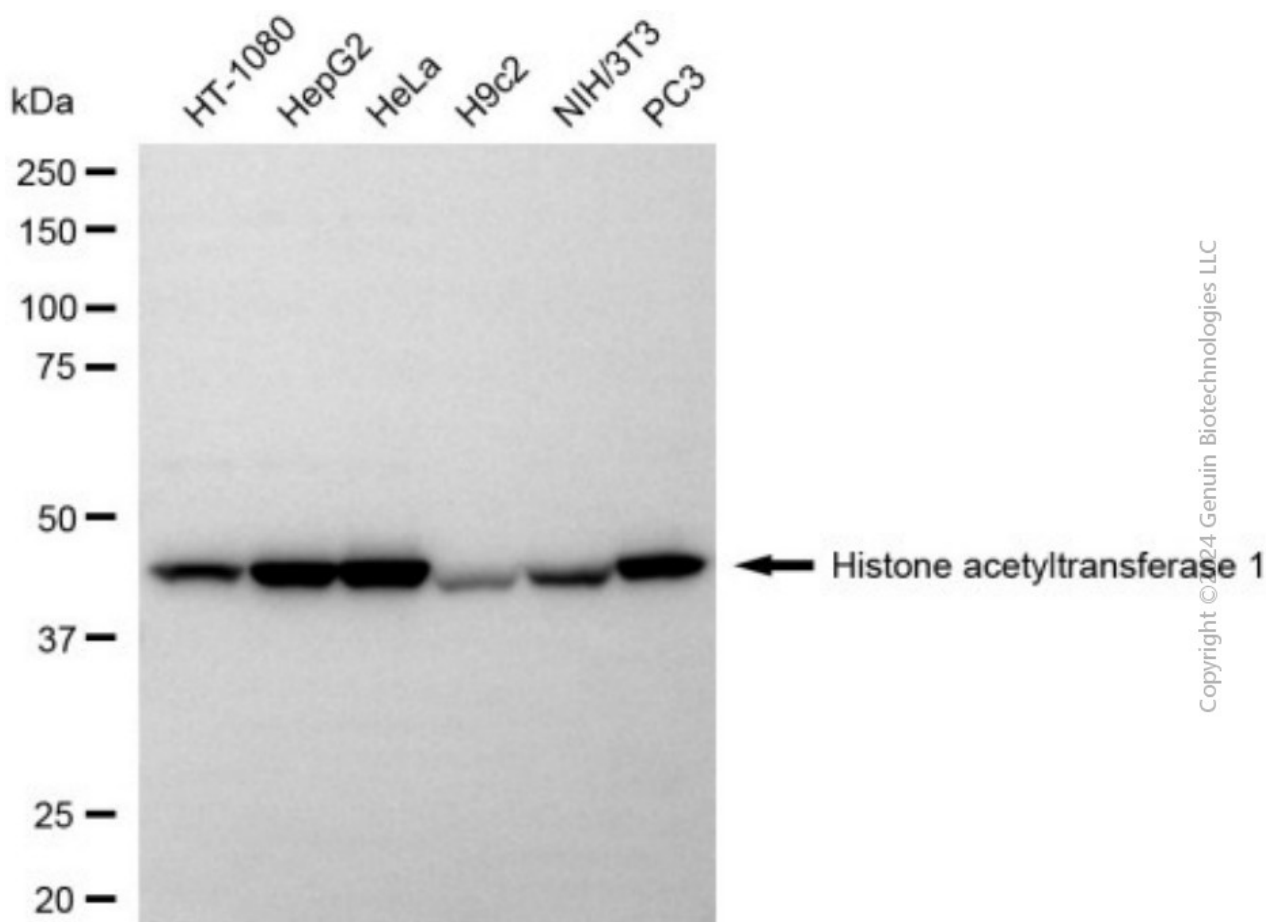
SALES@GENUINBIOTECH.COM  
FAX: +1-540-855-7041

**WWW.GENUINBIOTECH.COM**

## Anti-MAP3K7 Recombinant Rabbit Monoclonal Antibody

PAGE 3

Immunocytochemical staining of Hela cells with anti-MAP3K7 antibody (Cat#4370, 1:1,000). Nuclei were stained blue with DAPI; MAP3K7 was stained magenta with Alexa Fluor® 647. Images were taken using Leica stellaris 5. Protein abundance based on laser Intensity and smart gain: Very low. Scale bar, 20  $\mu$ m.



Western blotting analysis using anti-MAP3K7 antibody (Cat#4370). Total cell lysates (30  $\mu$ g) from various cell lines were loaded and separated by SDS-PAGE. The blot was incubated with anti-MAP3K7 antibody (Cat#4370, 1:5,000) and HRP-conjugated goat anti-rabbit secondary antibody (Cat#201, 1:20,000) respectively. Image was developed using NaQ™ ECL Substrate Kit (Cat#716).

### SUPPORT

SUPPORT@GENUINBIOTECH.COM  
TEL: +1-540-855-7041

### ORDERS

SALES@GENUINBIOTECH.COM  
FAX: +1-540-855-7041

WWW.GENUINBIOTECH.COM